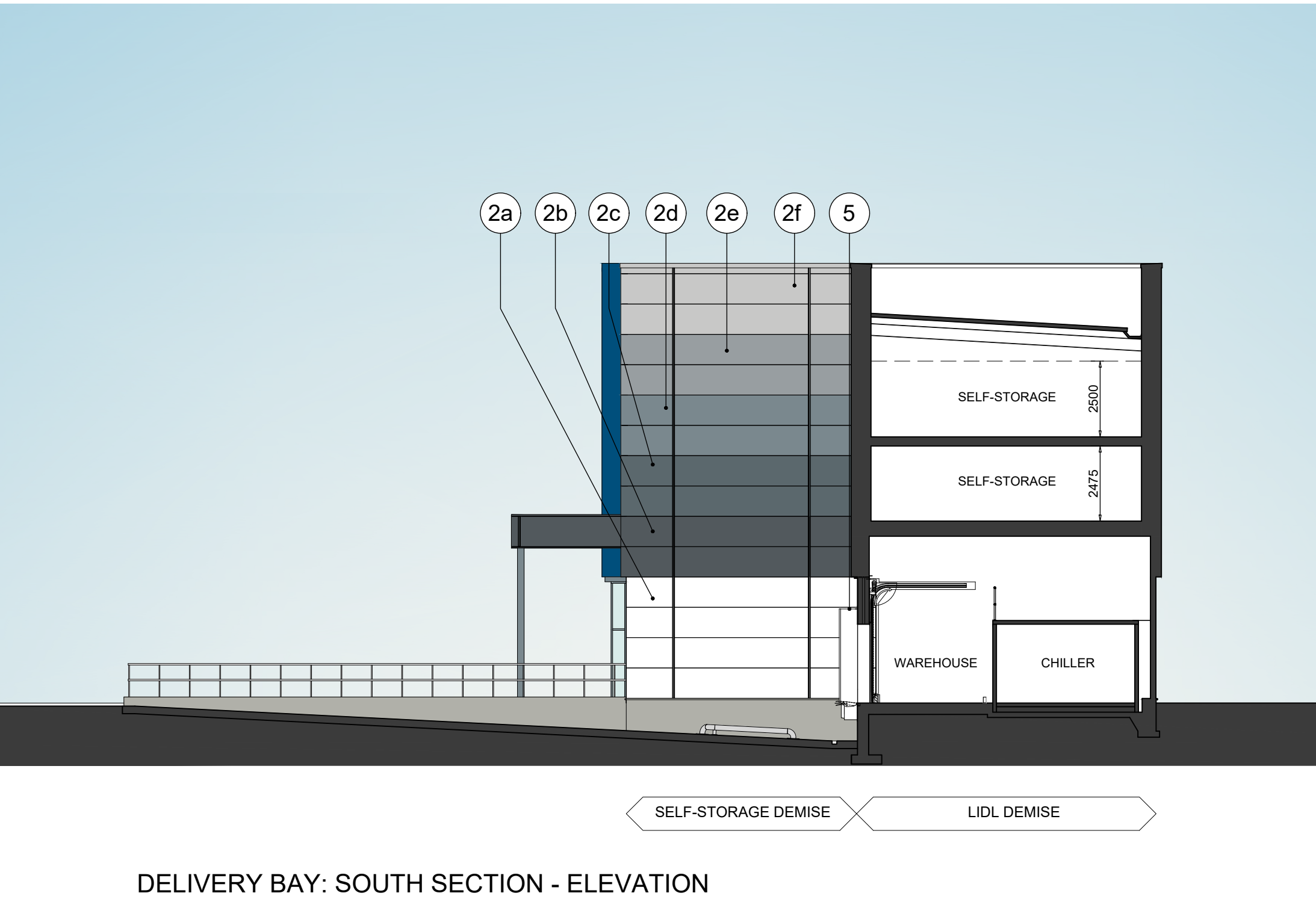
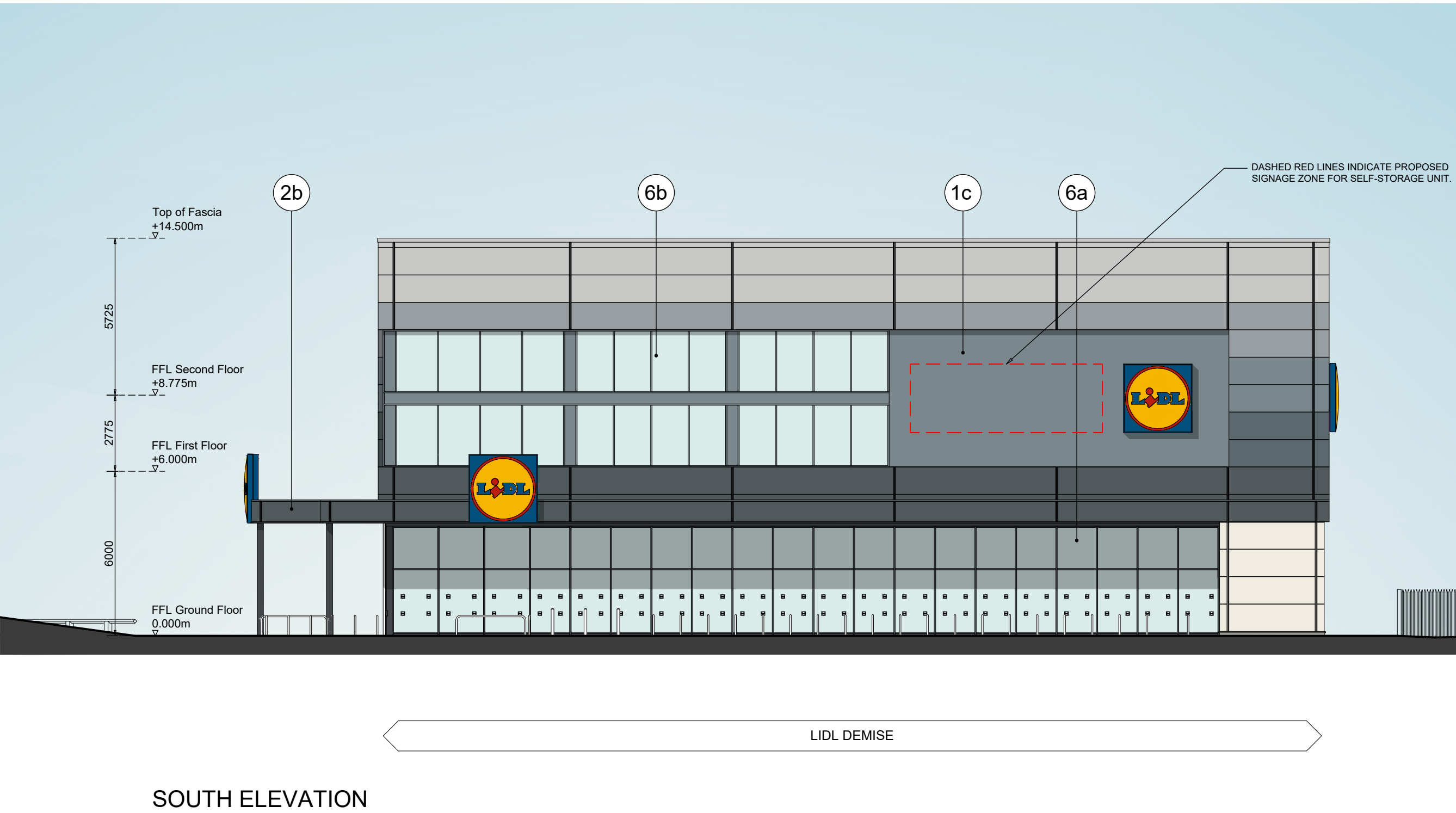
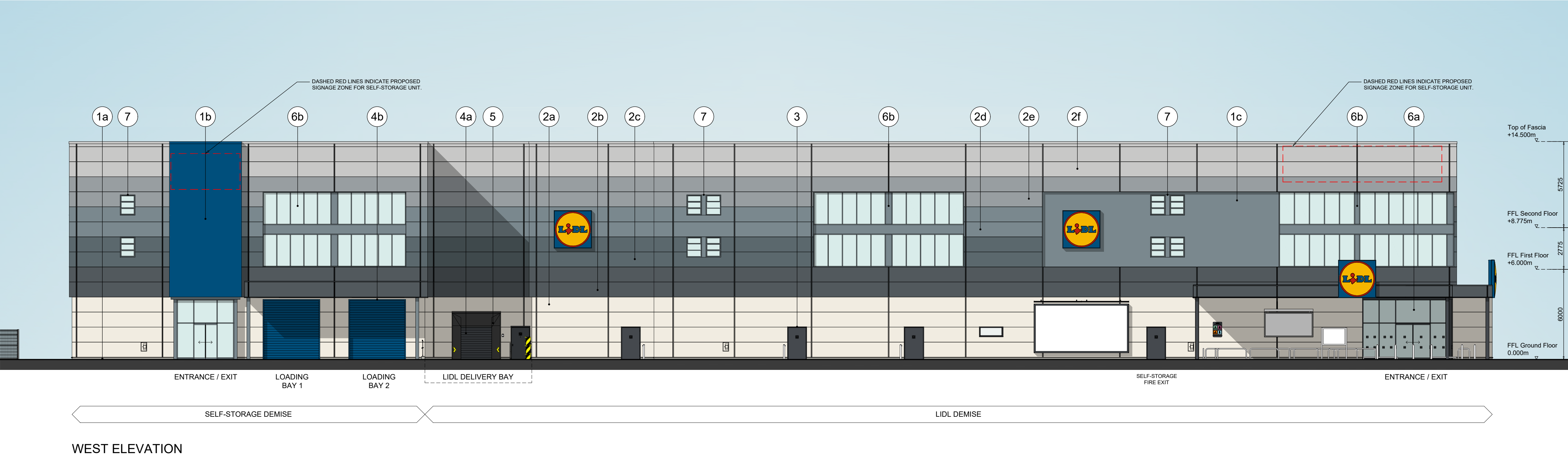


Materials - key to codes

- 1 External Wall Render
- a) Low level plinth with fair face float finished waterproof mineral render in 2no. layers to 20mm thickness. Render to be painted to comply with BS 6150. Colour: Grey, RAL 7038.
- b) High level with fair face float finished mineral render in 2no. layers to 20mm thickness. Render to be painted to comply with BS 6150. Colour: Gentian Blue, RAL 5010.
- c) High level with fair face float finished mineral render in 2no. layers to 20mm thickness. Render to be painted to comply with BS 6150. Colour: Squirrel Grey, RAL 7000.
- 2 External Wall Cladding
- Metal rainscreen wall cladding to List Specification.
- a) Low level colour: White, RAL 9010.
- b) Mid level 01 colour: Iron Grey, RAL 7011.
- c) Mid level 02 colour: Blue Grey, RAL 7031.
- d) Mid level 03 colour: Squirrel Grey, RAL 7000.
- e) Mid level 04 colour: Window Grey, RAL 7040.
- f) High level colour: Telegrey 4, RAL 7047.
- 3 External doors
- Steel doors and frames, powder coated internally and externally.
External colour: Graphite Grey, RAL 7024 to 30% gloss finish.
- 4 Sectional doors
- a) Delivery area insulated sectional door: 2600mm (W) x 2600mm (H).
External colour: Graphite Grey, RAL 7024.
- b) Delivery area insulated sectional door: 3800mm (W) x 4000mm (H).
External colour: Gentian Blue, RAL 5010.
- 5 Dock Shelter
- Model DSL, 3250mm x 3250mm x 500mm projection and 900mm head curtain, with galvanised steel collapsible linkarm frame. Front curtains polyester mono-flameant 3mm PVC coated to both sides. Colour: Black, with safety marker stripes.
- 6 Shopfront Glazing and Entrance Lobby
- a) Structural aluminium glazing sections by Schueco. All glazing panels to be double-glazed, 8.8 / 16 / mm 8mm glass unit. Laminated inner pane. Voids argon filled. Toughened outer pane with Sunguard SN70/35HT on surface 2. Entrance pod, automatic doors, shopfront glazing and window profiles powder coated Graphite Grey, RAL 7024 on both faces, gloss finish.
- b) Structural aluminium glazing sections by Schueco. All glazing panels to be double-glazed, 8.8 / 16 / mm 8mm glass unit. Laminated inner pane. Voids argon filled. Toughened outer pane with Sunguard SN70/35HT on surface 2. Entrance pod, automatic doors, shopfront glazing and window profiles powder coated Squirrel Grey, RAL 7000 on both faces, gloss finish.
- 7 Glazed Louvre Windows
- Aluminium glazing sections to EN 12101-2. Double-glazed manually operated opening louvre blades for use by the Fire Service. Each window to achieve minimum 1m² free opening area. Window profiles powder coated Squirrel Grey, RAL 7000 on both faces, gloss finish.



Client

Lidl Great Britain Ltd

Project

Lidl

Western Avenue, Hillingdon Circus

Title

Elevations as Proposed - Option B

Sheet 01 of 02

Drawing Ref.	Revision
5717-0402	P03
Scale - unless otherwise stated 1:150 @ A1	Status S0
	Issued For Preliminary