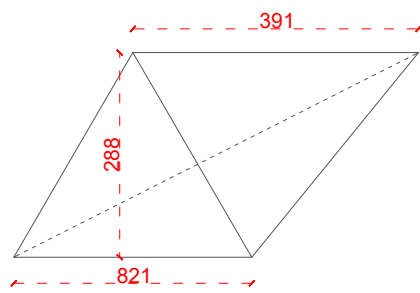
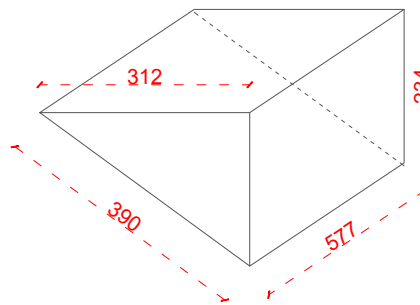




PROPOSED FRONT ELEVATION

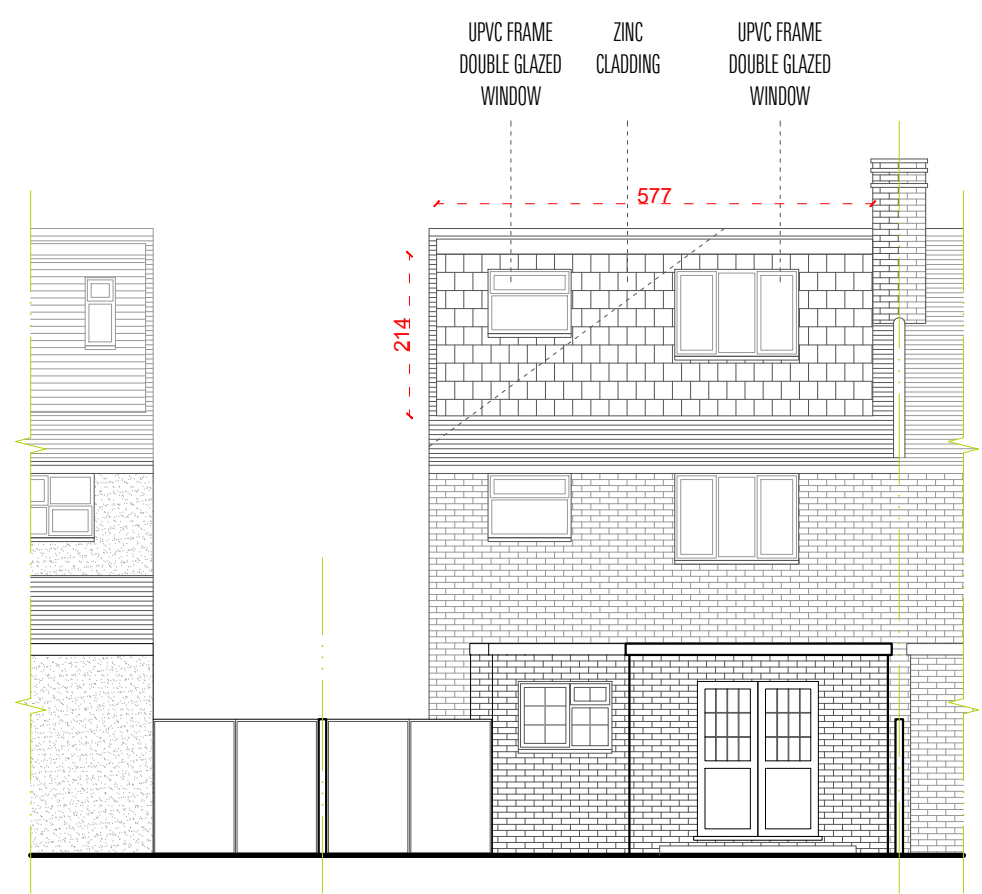


NEW EXTENDED ROOF VOLUME:
 $\{ \{ (2.88 \times 8.21) / 2 \} \times 3.91 \} / 3 = 15.41 \text{ m}^3$

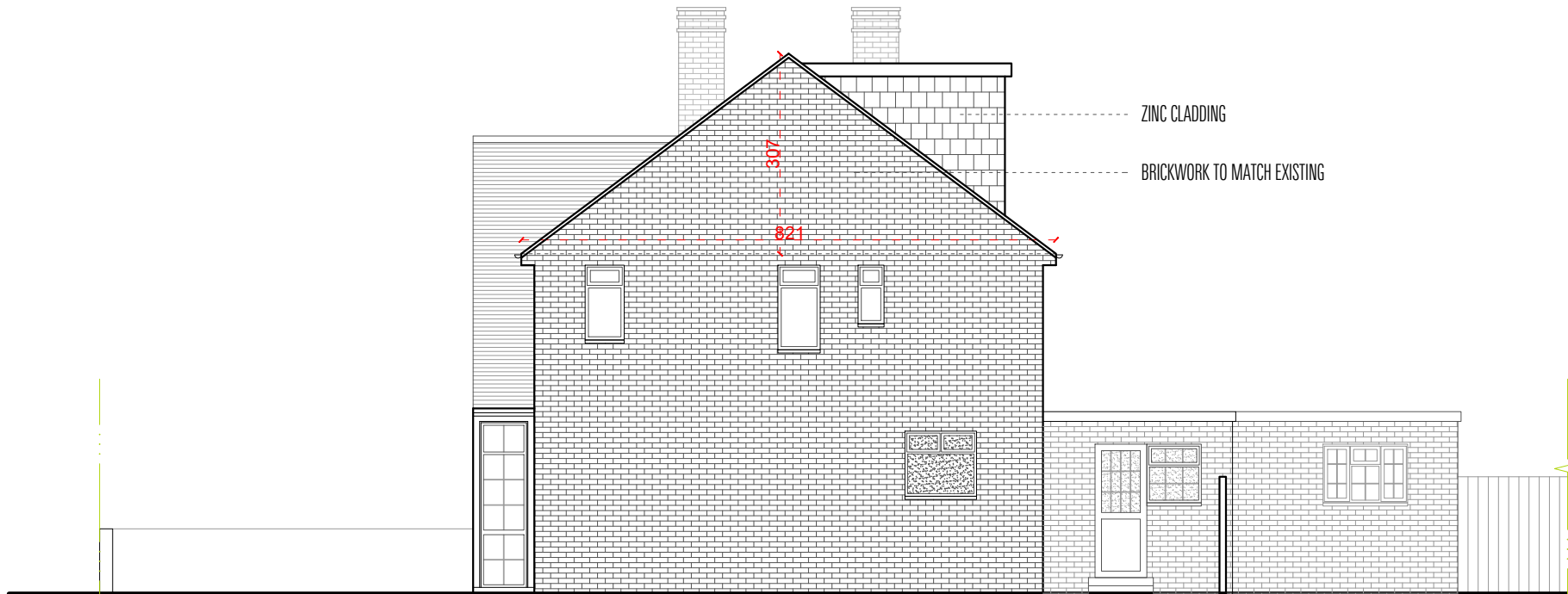


DORMER VOLUME:
 $\{ (2.34 \times 3.12) / 2 \} \times 5.77 = 21.06 \text{ m}^3$

TOTAL VOLUME:
 $21.06 + 15.41 = 36.47 \text{ m}^3 < 40 \text{ m}^3$



PROPOSED REAR ELEVATION



PROPOSED SIDE ELEVATION