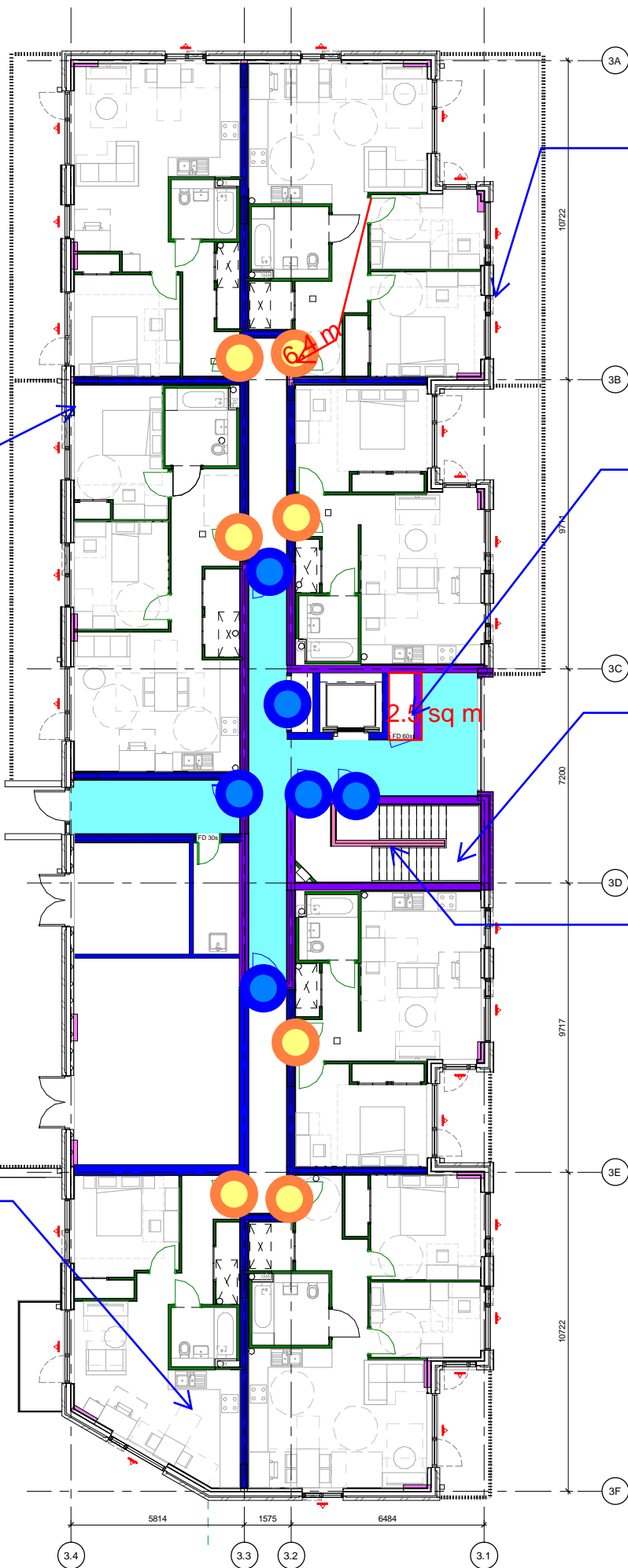


APPENDIX A MARK-UP



External fire spread calculations to be performed in regards to relevant and/or notional boundaries.

A smoke shaft at least 1.5m² is required, need to indicate where the smoke shaft will locate. This applies to the entire height of the building.

A high level AOV in the top storey of the stairway having a minimum free area of 1m²; this applies to entire height of the building

Separation of staircase at ground floor

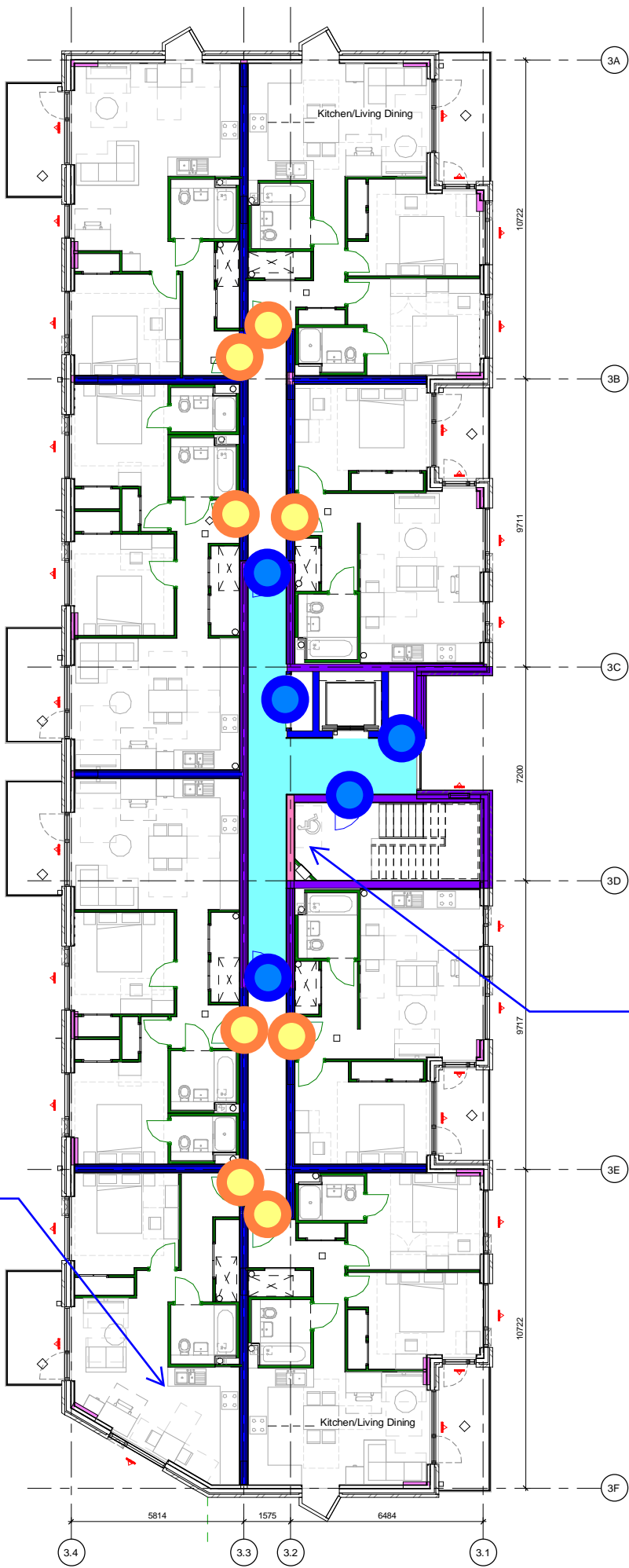
The elements of structure are required to be 90 mins fire resistance in terms of load bearing capacity. This applies to entire height of the building.

All residential apartments are to be provided with a Grade D LD1 fire alarm and detection system designed, installed and commissioned in accordance with BS5839-6:2013. The common residential areas to be provided with an L5 system.

KEY

- 240 mins REI
- 120 mins REI
- 90 mins REI
- 60 mins REI
- 30 mins REI
- Vented Area
- AOV AOV to Upper Floors
- B AOV AOV to Basement

- FD 30s fire door
- FD 60s fire door



All residential apartments are to be provided with a Grade D LD1 fire alarm and detection system designed, installed and commissioned in accordance with BS5839-6:2013. The common residential areas to be provided with an L5 system.

900x1400mm disabled refugees to be arranged within staircase; if not possible, refugee in lobby space is considered acceptable. This applies to all upper floors as well.

KEY

- 240 mins REI
- 120 mins REI
- 90 mins REI
- 60 mins REI
- 30 mins REI
- Vented Area
- AOV AOV to Upper Floors
- B AOV AOV to Basement

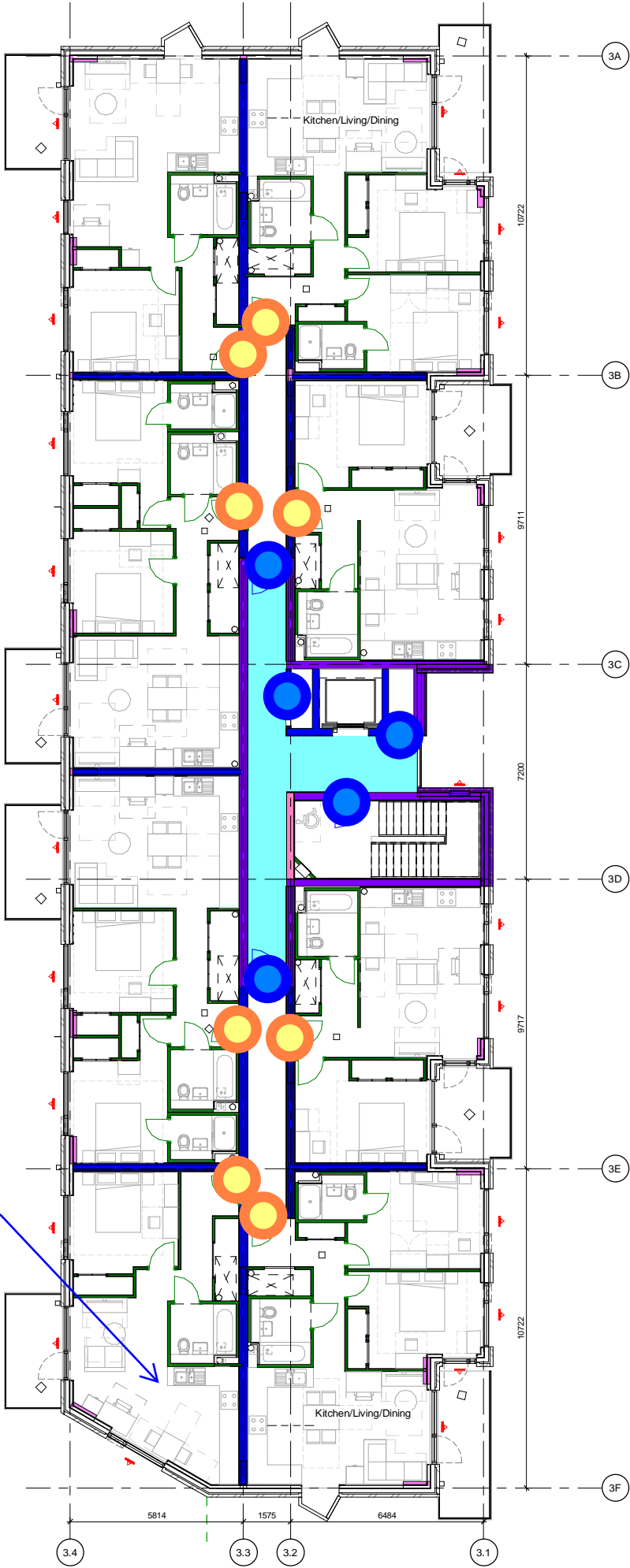
- FD 30s fire door
- FD 60s fire door

Notes

D30S
rated
door w/
smoke
seal

FD60S
Rated
Door w/
smoke
seal

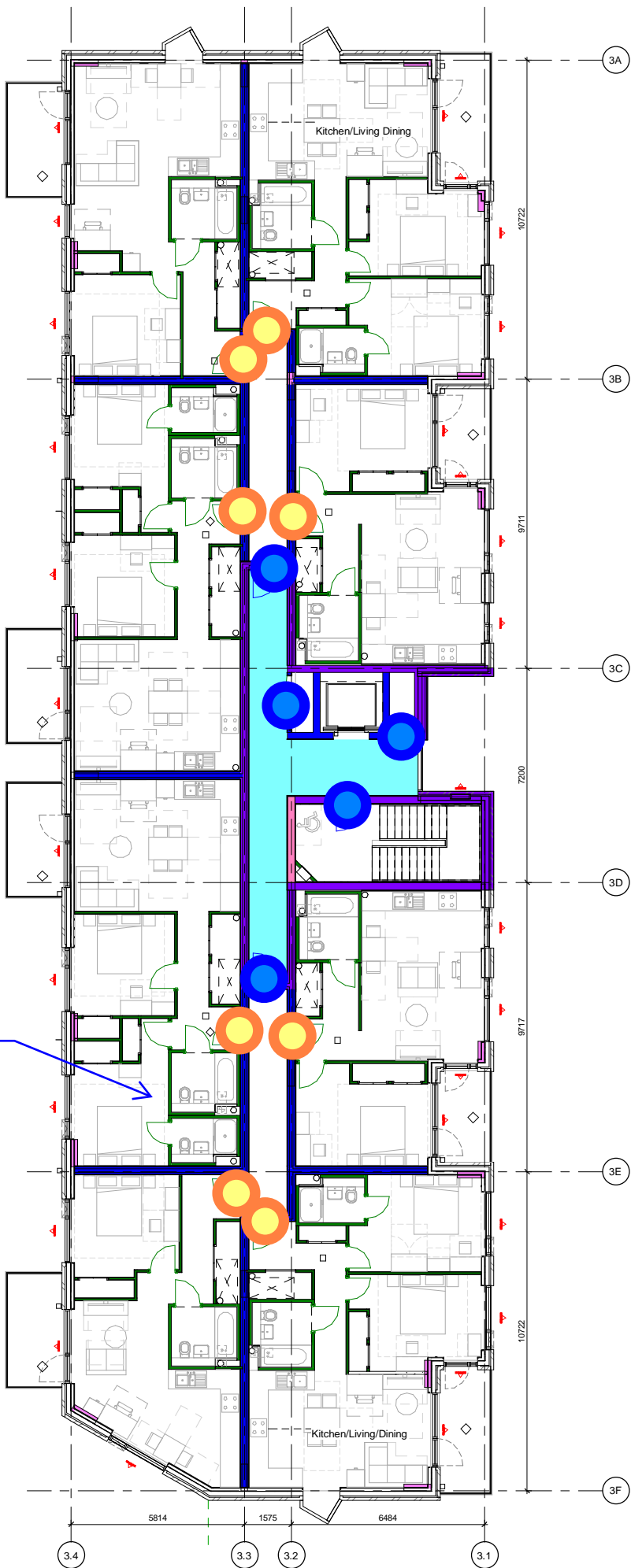
All residential apartments are to be provided with a Grade D LD1 fire alarm and detection system designed, installed and commissioned in accordance with BS5839-6:2013. The common residential areas to be provided with an L5 system.



KEY

- 240 mins REI
- 120 mins REI
- 90 mins REI
- 60 mins REI
- 30 mins REI
- Vented Area
- AOV AOV to Upper Floors
- B AOV AOV to Basement

- FD 30s fire door
- FD 60s fire door



All residential apartments are to be provided with a Grade D LD1 fire alarm and detection system designed, installed and commissioned in accordance with BS5839-6:2013. The common residential areas to be provided with an L5 system.

KEY

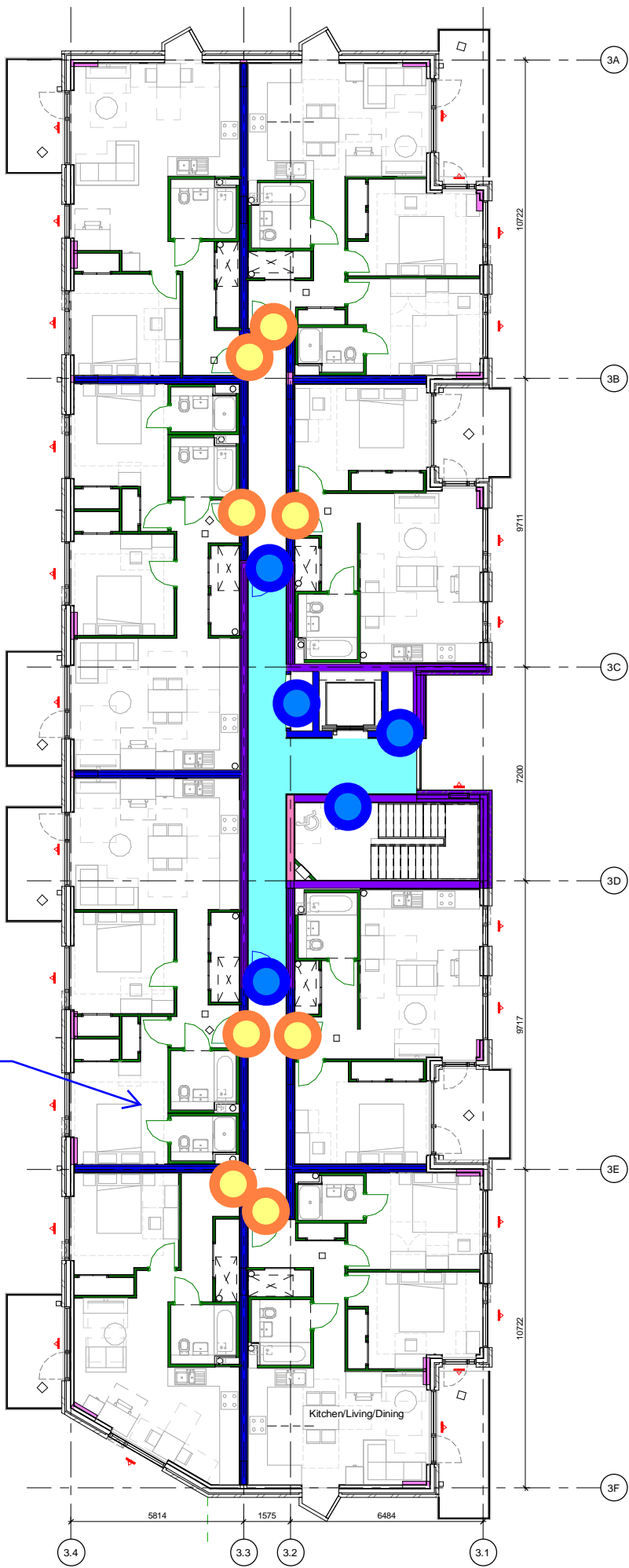
- 240 mins REI
- 120 mins REI
- 90 mins REI
- 60 mins REI
- 30 mins REI
- Vented Area
- AOV AOV to Upper Floors
- B AOV AOV to Basement

- FD 30s fire door
- FD 60s fire door

notes

D30S
Rated
door w/
smoke
seal

FD60S
Rated
Door w/
smoke
seal



All residential apartments are to be provided with a Grade D LD1 fire alarm and detection system designed, installed and commissioned in accordance with BS5839-6:2013. The common residential areas to be provided with an L5 system.

KEY

- 240 mins REI
- 120 mins REI
- 90 mins REI
- 60 mins REI
- 30 mins REI
- Vented Area
- AOV AOV to Upper Floors
- B AOV AOV to Basement

- FD 30s fire door
- FD 60s fire door

PROJECT REF:
22338 St Modwen - St Andrews Park Uxbridge

TITLE:
FIRE STRATEGY DRAWING

DRAWN:
ZH/QA-KH

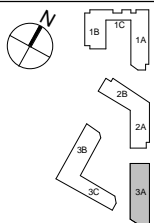
DATE:
10/12/2021

Notes

FD 30s fire door

FD 60s fire door

Door w/ smoke seal



P1 RET SAS 24.11.21 Preliminary Fire Strategy Drawings
REV BY CHKD DATE AMENDMENT DETAILS

project
Uxbridge Town Centre West
St. Andrew's Park, Uxbridge

client
St. Modwen Homes

FraserBrownMacKenna Architects
15-16 Featherstone St. London EC1Y 8SL www.fbmarchitects.com
T:020 7251 0543

drawing title
Block 3A Level 04

PRELIMINARY

scale
1:100 @ A1
1:200 @ A3

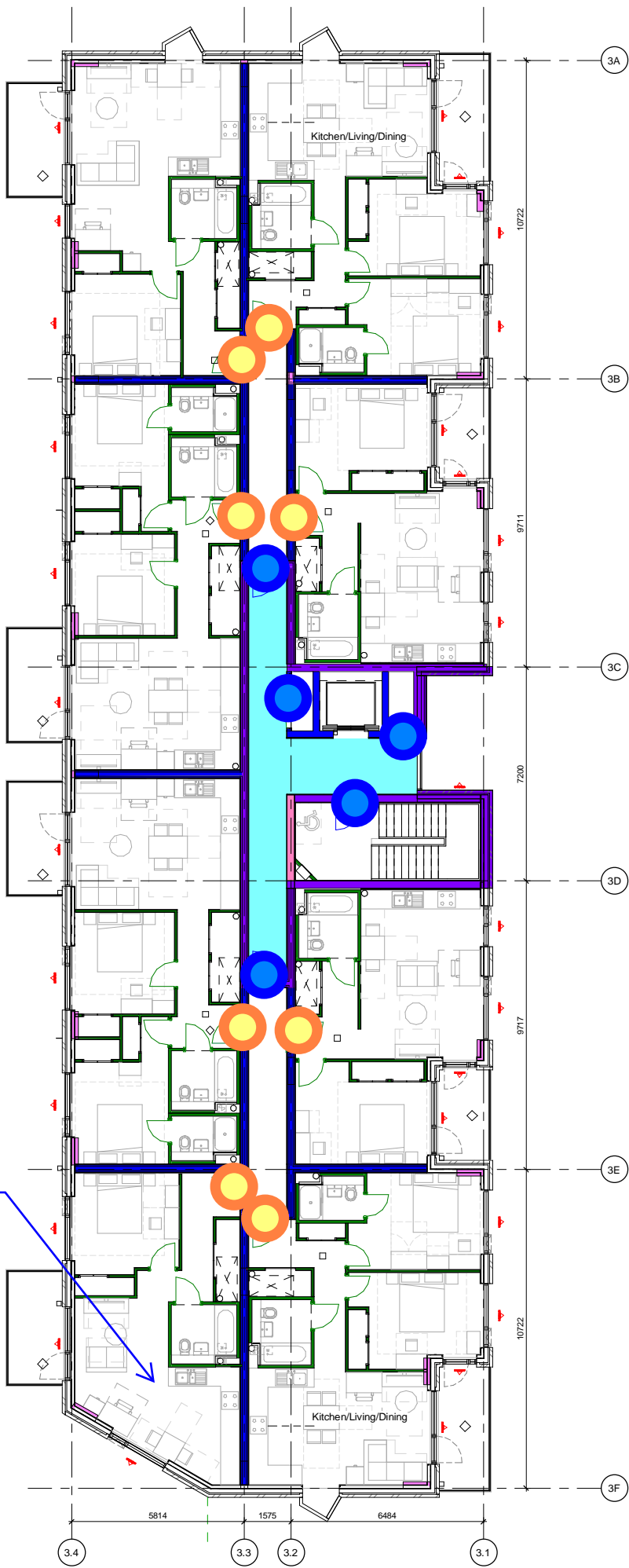
drawn by
KK

checked by
SAS

date of first issue
24.11.21

project
R9110-FBM-21-04-DR-A- 1634

revision
P1



All residential apartments are to be provided with a Grade D LD1 fire alarm and detection system designed, installed and commissioned in accordance with BS5839-6:2013. The common residential areas to be provided with an L5 system.

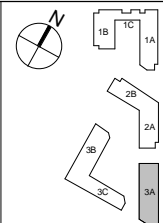
KEY

- 240 mins REI
- 120 mins REI
- 90 mins REI
- 60 mins REI
- 30 mins REI
- Vented Area
- AOV AOV to Upper Floors
- B AOV AOV to Basement

- FD 30s fire door
- FD 60s fire door

Notes

- D30S Rated door w/ smoke seal
- FD60S Rated Door w/ smoke seal



P1 RET SAS 24.11.21 Preliminary Fire Strategy Drawings
REV BY CHKD DATE AMENDMENT DETAILS

project
Uxbridge Town Centre West
St. Andrew's Park, Uxbridge

client
St. Modwen Homes

FraserBrownMacKenna Architects
15-16 Featherstone St. London EC1Y 8SL www.fbmarchitects.com
T:020 7251 0543

drawing title
Block 3A Level 05

PRELIMINARY

scale 1:100 @ A1 1:200 @ A3	drawn by KK	checked by SAS	date of first issue 24.11.21
project R9110-FBM-21-05-DR-A-	year 2021	level 05	revision P1

DRAWING NUMBER

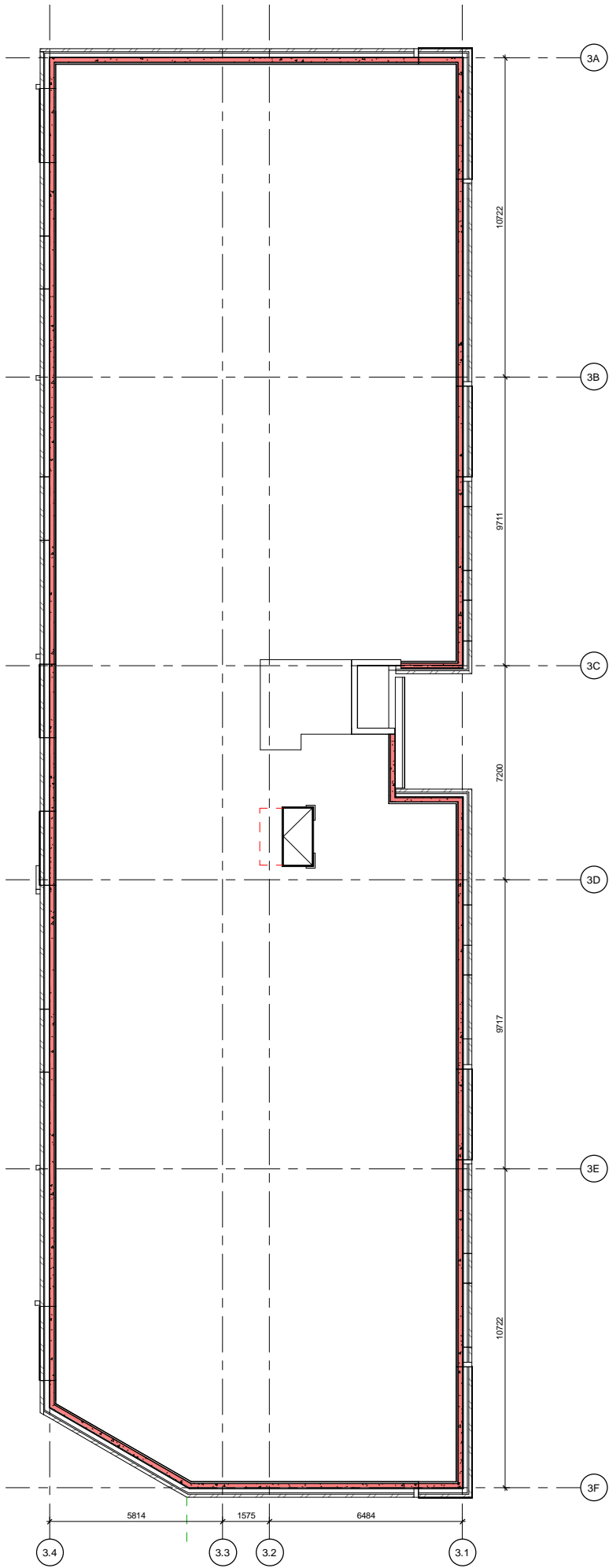
IFC Group

PROJECT REF:
22338 St Modwen - St Andrews Park Uxbridge

TITLE:
FIRE STRATEGY DRAWING

DRAWN:
ZH/QA-KH

DATE:
10/12/2021



KEY

- 240 mins REI
- 120 mins REI
- 90 mins REI
- 60 mins REI
- 30 mins REI
- Vented Area
- AOV AOV to Upper Floors
- B AOV AOV to Basement

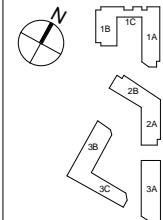
- FD 30s fire door
- FD 60s fire door

PROJECT REF:
22338 St Modwen - St Andrews Park Uxbridge

TITLE:
FIRE STRATEGY DRAWING

DRAWN:
ZH/QA-KH

DATE:
10/12/2021



P1 RET SAS 24.11.21 Preliminary Fire Strategy Drawings
REV BY CHKD DATE AMENDMENT DETAILS

project
Uxbridge Town Centre West
St. Andrew's Park, Uxbridge

client
St. Modwen Homes

FraserBrownMacKenna Architects
15-16 Featherstone St. London EC1Y 8SL www.fbmarchitects.com
T:020 7251 0543

drawing title
Block 3A Roof

PRELIMINARY

scale 1:100 @ A1 1:200 @ A3	drawn by KK	checked by SAS	date of first issue 24.11.21
project R9110-FBM-21-RF-DR-A-	company 1636	year 2021	level P1

DRAWING NUMBER