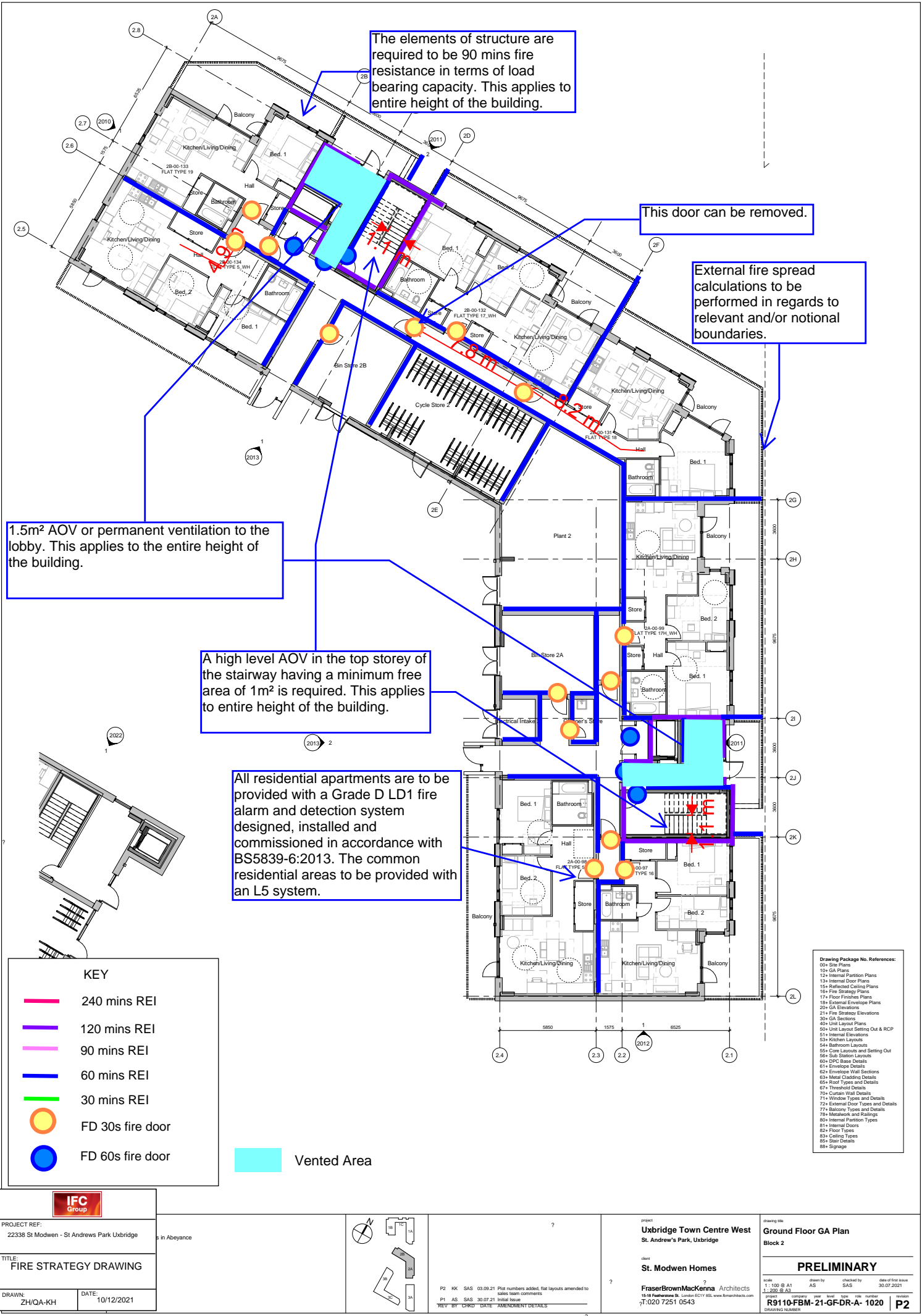


APPENDIX A MARK-UP



The elements of structure are required to be 90 mins fire resistance in terms of load bearing capacity. This applies to entire height of the building.

This door can be removed.

External fire spread calculations to be performed in regards to relevant and/or notional boundaries.

1.5m² AOV or permanent ventilation to the lobby. This applies to the entire height of the building.

A high level AOV in the top storey of the stairway having a minimum free area of 1m² is required. This applies to entire height of the building.

All residential apartments are to be provided with a Grade D LD1 fire alarm and detection system designed, installed and commissioned in accordance with BS5839-6:2013. The common residential areas to be provided with an L5 system.

KEY

- 240 mins REI
- 120 mins REI
- 90 mins REI
- 60 mins REI
- 30 mins REI
- FD 30s fire door
- FD 60s fire door

Vented Area

Drawing Package No. References:
00+ Site Plans
10+ GA Plans
12+ Internal Partition Plans
13+ Internal Door Plans
14+ Reflected Ceiling Plans
15+ Fire Strategy Plans
16+ Floor Finishes Plans
17+ External Envelope Plans
18+ GA Elevations
19+ Fire Strategy Elevations
20+ GA Sections
21+ Unit Layout Plans
22+ Unit Layout Setting Out & RCP
23+ Kitchen Layouts
24+ Bathroom Layouts
25+ Core Layouts and Setting Out
26+ Sub Station Details
27+ DPC Base Details
28+ Envelope Details
29+ Envelope Wall Sections
30+ Metal Cladding Details
31+ Roof Types and Details
32+ Threshold Details
33+ Curtain Wall Details
34+ Window Types and Details
35+ External Door Types and Details
36+ Balcony Types and Details
37+ Metalwork and Railings
38+ Internal Partition Types
39+ Internal Doors
40+ Floor Types
41+ Ceiling Types
42+ Stair Details
43+ Signage



PROJECT REF:
22338 St Modwen - St Andrews Park Uxbridge

TITLE:
FIRE STRATEGY DRAWING

DRAWN: ZH/QA-KH DATE: 10/12/2021



P2 KK SAS 03.09.21 Plot numbers added, flat layouts amended to sales team comments
P1 AS SAS 30.07.21 Initial Issue
REV BY CHK'D DATE AMENDMENT DETAILS

project
Uxbridge Town Centre West
St. Andrew's Park, Uxbridge

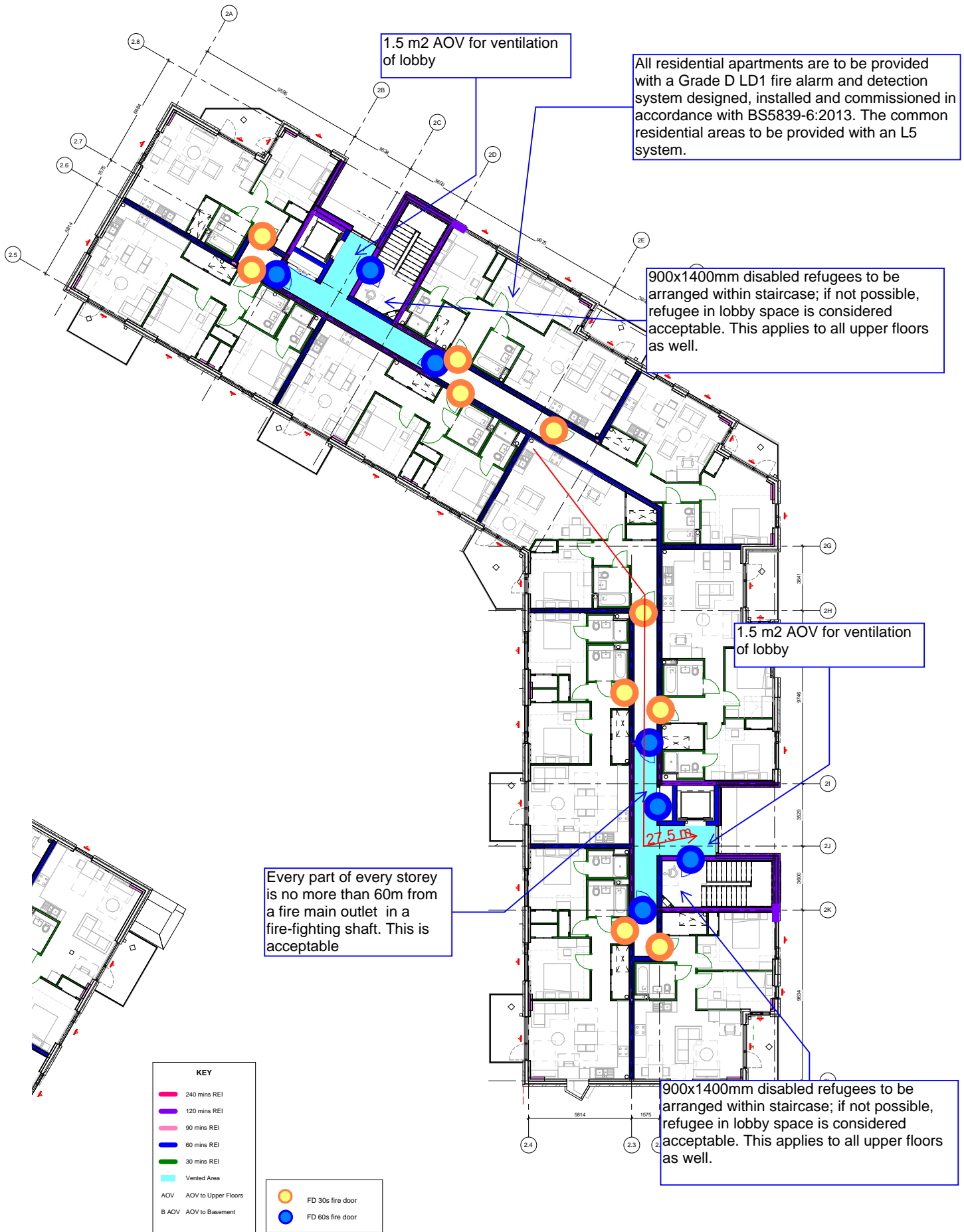
client
St. Modwen Homes

FraserBrownMacKenna Architects
15-18 Featherstone St. London EC1Y 8SL www.bmarchitects.com
T:020 7251 0543

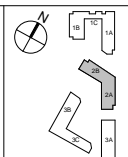
drawing title
Ground Floor GA Plan
Block 2

PRELIMINARY

scale 1:100 @ A1
date of first issue 30.07.2021
project number R9110-FBM-21-GF-DR-A-1020
revision P2



PROJECT REF: 22338 St Modwen - St Andrews Park Uxbridge	
TITLE: FIRE STRATEGY DRAWING	
DRAWN: ZH/QA-KH	DATE: 10/12/2021



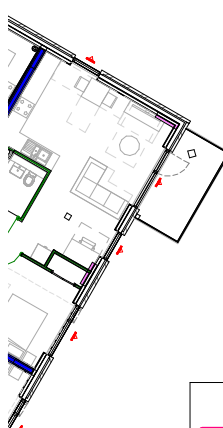
P1 RET SAS 24.11.21 Preliminary Fire Strategy Drawings
 REV BY CHD DATE AMENDMENT DETAILS

project
Uxbridge Town Centre West
 St. Andrew's Park, Uxbridge

client
St. Modwen Homes

FraserBrownMacKenna Architects
 15-16 Featherstone St, London EC1Y 8SL, www.fbmarchitects.com
 T:020 7251 0543

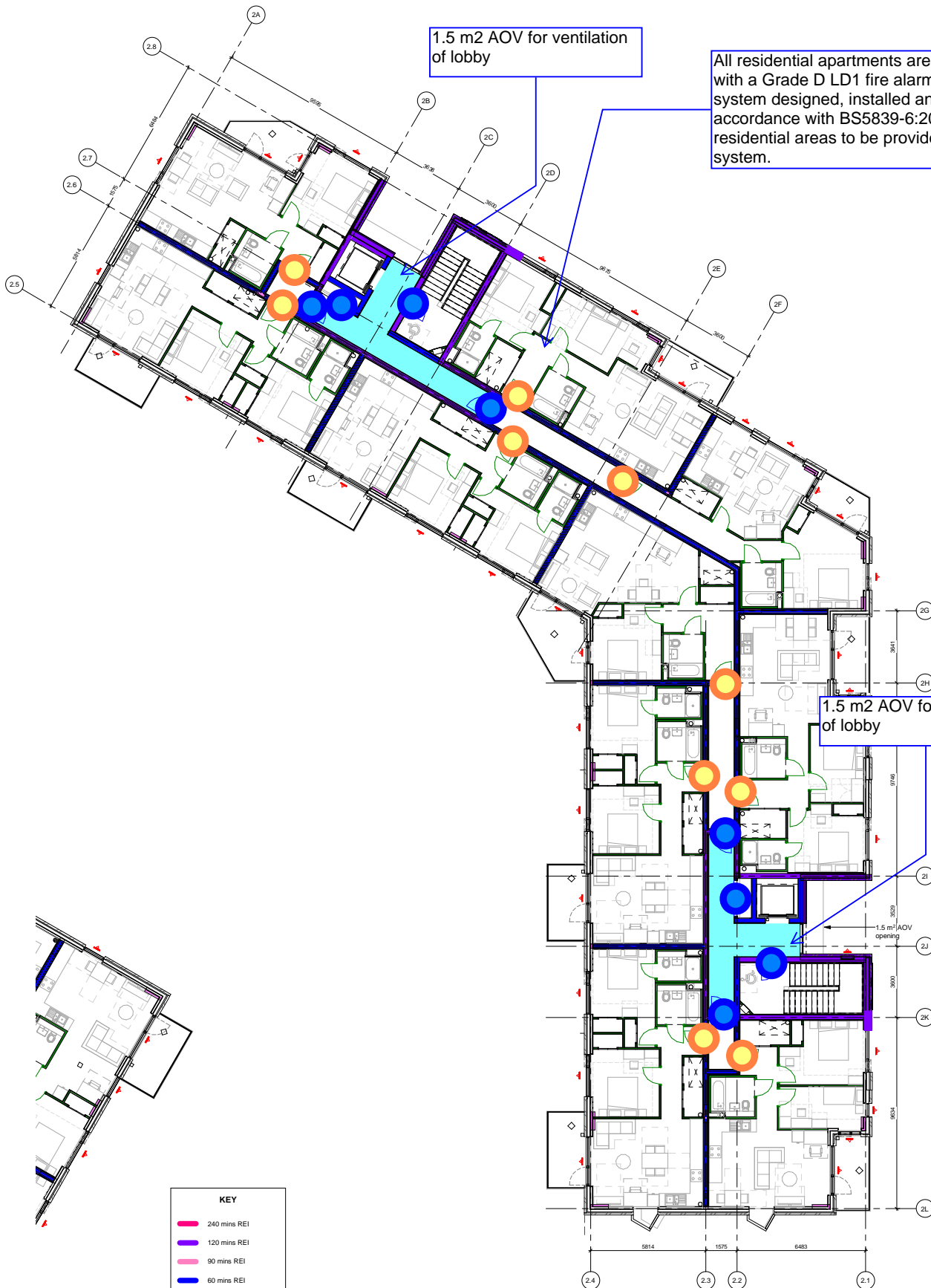
Block 2 Level 01 Fire Strategy Plan	
PRELIMINARY	
scale 1:100 @ A1 1:200 @ A3	drawn by KK
checked by SAS	date of first issue 24.11.21
project R9110-FBM-21-01-DR-A-1621	
revision P1	



PROJECT REF: 22338 St Modwen - St Andrews Park Uxbridge	
TITLE: FIRE STRATEGY DRAWING	
DRAWN: ZH/QA-KH	DATE: 10/12/2021

P1 : RET SAS 24.11.21 Preliminary Fire Strategy Drawings
REV BY CHKD DATE AMENDMENT DETAILS

project Uxbridge Town Centre West St. Andrew's Park, Uxbridge		drawing title Block 2 Level 02 Fire Strategy Plan	
client St. Modwen Homes		PRELIMINARY	
FraserBrownMacKenna Architects 15-18 Featherston St, London EC1Y 8SL www.fbmarchitects.com T:020 7251 0543		scale 1 : 100 @ A1 1 : 200 @ A3	
		drawn by KK	checked by SAS
		date of first issue 24.11.21	
		project number P101-FBM-21-02-DR-A-	revision 1622 P1



All residential apartments are to be provided with a Grade D LD1 fire alarm and detection system designed, installed and commissioned in accordance with BS5839-6:2013. The common residential areas to be provided with an L5 system.

1.5 m2 AOV for ventilation of lobby

1.5 m2 AOV for ventilation of lobby

KEY	
—	240 mins REI
—	120 mins REI
—	90 mins REI
—	60 mins REI
—	30 mins REI
 	Vented Area
AOV	AOV to Upper Floors
B AOV	AOV to Basement

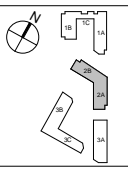
●	FD 30s fire door
●	FD 60s fire door

PROJECT REF:
22338 St Modwen - St Andrews Park Uxbridge

TITLE:
FIRE STRATEGY DRAWING

DRAWN:
ZH/QA-KH

DATE:
10/12/2021



P1 RET SAS 24.11.21 Preliminary Fire Strategy Drawings
REV BY CHRD DATE AMENDMENT DETAILS

project
Uxbridge Town Centre West
St. Andrew's Park, Uxbridge

client
St. Modwen Homes

FraserBrownMacKenna Architects
15-16 Featherstone St. London EC1Y 8SL www.fbmarchitects.com
T:020 7251 0543

Block 2 Level 03			
Fire Strategy Plan			
PRELIMINARY			
scale 1:100 @ A1	drawn by KK	checked by SAS	date of first issue 24.11.21
project R9110-FBM-21-03-DR-A-1623	company FraserBrownMacKenna	year 2021	type Fire Strategy Plan
revision P1	role Architect	number 1623	date 24.11.21