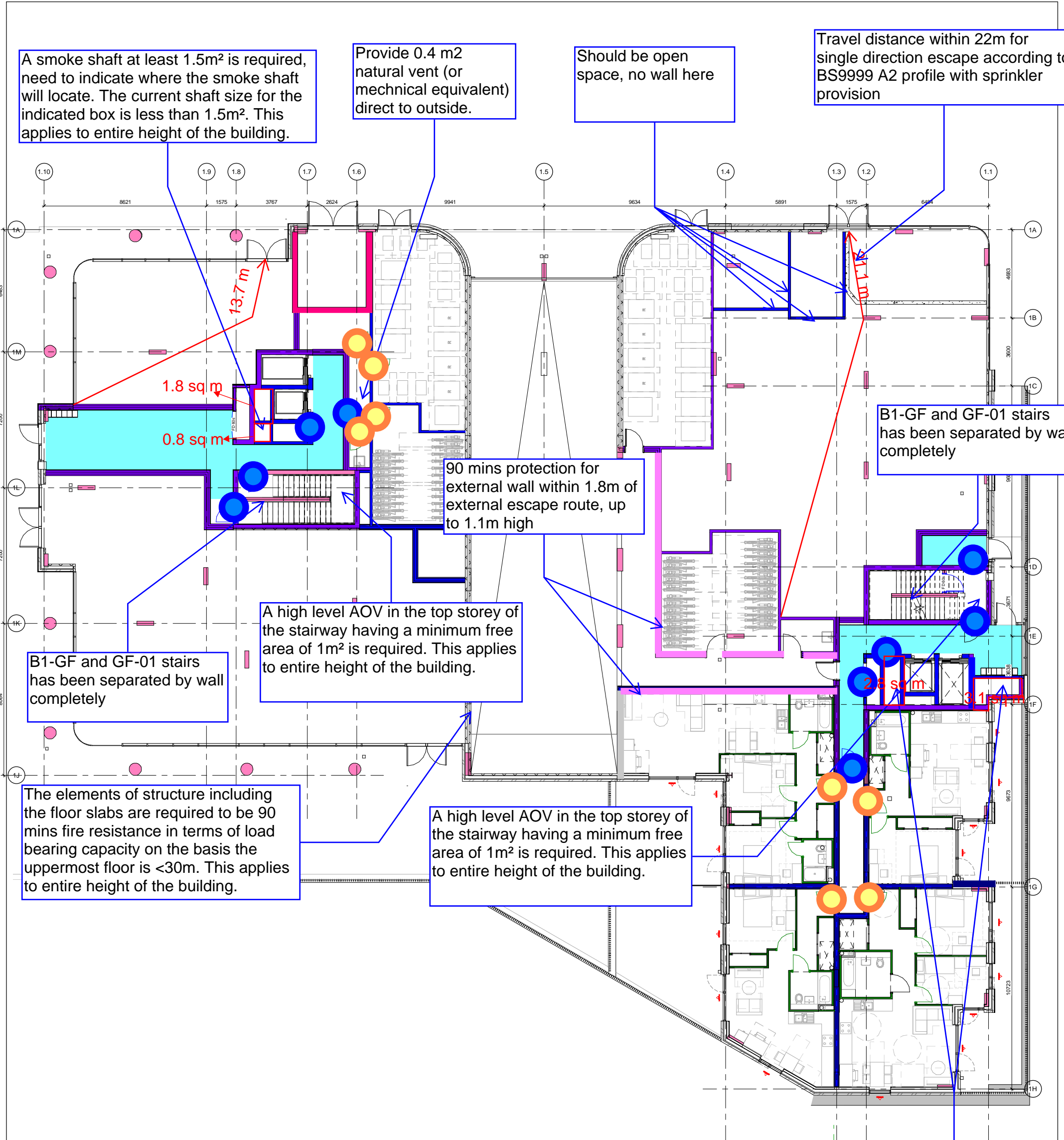


APPENDIX A MARK-UP



A smoke shaft at least 1.5m² is required, need to indicate where the smoke shaft will locate. The current shaft size for the indicated box is less than 1.5m². This applies to entire height of the building.

Provide 0.4 m² natural vent (or mechanical equivalent) direct to outside.

Should be open space, no wall here

Travel distance within 22m for single direction escape according to BS9999 A2 profile with sprinkler provision

B1-GF and GF-01 stairs has been separated by wall completely

90 mins protection for external wall within 1.8m of external escape route, up to 1.1m high

A high level AOV in the top storey of the stairway having a minimum free area of 1m² is required. This applies to entire height of the building.

B1-GF and GF-01 stairs has been separated by wall completely

The elements of structure including the floor slabs are required to be 90 mins fire resistance in terms of load bearing capacity on the basis the uppermost floor is <30m. This applies to entire height of the building.

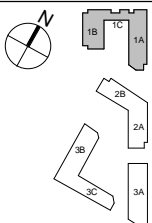
A high level AOV in the top storey of the stairway having a minimum free area of 1m² is required. This applies to entire height of the building.

A smoke shaft at least 1.5m² is required, need to indicate where the smoke shaft will locate. This applies to the entire height of the building.

KEY	
—	240 mins REI
—	120 mins REI
—	90 mins REI
—	60 mins REI
—	30 mins REI
—	Vented Area
AOV	AOV to Upper Floors
B AOV	AOV to Basement

	FD 30S fire door
	FD 60S fire door

notes
FD30S
Rated
Door w/
smoke
seal
FD60S
Rated
Door w/
smoke
seal



P1 RET SAS 24.11.21 Preliminary Fire Strategy Drawings
REV BY CHKD DATE AMENDMENT DETAILS

project
Uxbridge Town Centre West
St. Andrew's Park, Uxbridge
client
St. Modwen Homes
FraserBrownMacKenna Architects
15-16 Featherstone St. London EC1Y 8SL www.fbmarchitects.com
T:020 7251 0543

drawing title
Block 1 Level 00
Fire Strategy Plan
PRELIMINARY
scale
1:100 @ A1
1:200 @ A3
drawn by
KK
checked by
SAS
date of first issue
24.11.21
revision
R9110-FBM-21-00-DR-A- 1610
DRAWING NUMBER
P1

All residential apartments are to be provided with a Grade D LD1 fire alarm and detection system designed, installed and commissioned in accordance with BS5839-6:2013. The common residential areas to be provided with an L5 system.

30 minutes fire resistance is required to the walls to a height of 1.1m from the deck to the apartments accessed from the balconies. Window openings should be a minimum of 1.1m high. This applies to all upper floors as well.

Unprotected Area allowed according to BS 9999 Figure 23

900x1400mm disabled refugees to be arranged within staircase; if not possible, refugee in lobby space is considered acceptable. This applies to all upper floors as well.

Staircase wall within shaft can be reduced to 90 mins if needed, as it's within the fire fighting shaft, this applies to all upper floors as well.

A high level AOV in the top storey of the stairway having a minimum free area of 1m² is required. This applies to entire height of the building.

External fire spread calculations to be performed in regards to relevant and/or notional boundaries.

Open plan flats considered acceptable based on provision of Grade D LD1 fire alarm and AWFSS in the flat, and the cooking facilities is located at least 1.8m from the escape route. This applies to all other open plan flats.

KEY

- 240 mins REI
- 120 mins REI
- 90 mins REI
- 60 mins REI
- 30 mins REI
- Vented Area
- AOV AOV to Upper Floors
- B AOV AOV to Basement

- FD 30s fire door
- FD 60s fire door

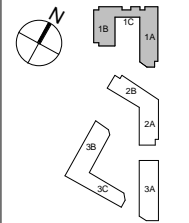
IFC Group

PROJECT REF:
22338 St Modwen - St Andrews Park Uxbridge

TITLE:
FIRE STRATEGY DRAWING

DRAWN:
ZH/QA-KH

DATE:
10/12/2021



P1 RET SAS 24.11.21 Preliminary Fire Strategy Drawings
REV BY CHKD DATE AMENDMENT DETAILS

project
Uxbridge Town Centre West
St. Andrew's Park, Uxbridge

client
St. Modwen Homes

FraserBrownMacKenna Architects
15-16 Featherstone St. London EC1Y 8SL www.fbmarchitects.com
T:020 7251 0543

drawing title
Block 1 Level 01
Fire Strategy Plan

PRELIMINARY

scale
1:100 @ A1
1:200 @ A3

drawn by
KK

checked by
SAS

date of first issue
24.11.21

project company year level type role number
R9110-FBM-21-01-DR-A- 1611

revision
P1

Open plan flats considered acceptable based on provision of Grade D LD1 fire alarm and AWFSS in the flat, and the cooking facilities is located at least 1.8m from the escape route. This applies to all other open plan flats.

Unprotected Area allowed according to BS 9999 Figure 23

All residential apartments are to be provided with a Grade D LD1 fire alarm and detection system designed, installed and commissioned in accordance with BS5839-6:2013. The common residential areas to be provided with an L5 system.

KEY	
—	240 mins REI
—	120 mins REI
—	90 mins REI
—	60 mins REI
—	30 mins REI
—	Vented Area
AOV	AOV to Upper Floors
B AOV	AOV to Basement

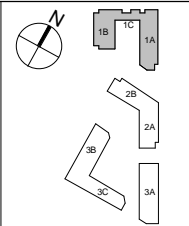
●	FD 30s fire door
●	FD 60s fire door

PROJECT REF:
22338 St Modwen - St Andrews Park Uxbridge

TITLE:
FIRE STRATEGY DRAWING

DRAWN:
ZH/QA-KH

DATE:
10/12/2021



P1 RET SAS 24.11.21 Preliminary Fire Strategy Drawings
REV BY CHKD DATE AMENDMENT DETAILS

project
Uxbridge Town Centre West
St. Andrew's Park, Uxbridge

client
St. Modwen Homes

FraserBrownMacKenna Architects
15-16 Featherstone St. London EC1Y 8SL www.fbmarchitects.com
T:020 7251 0543

drawing title
Block 1 Level 02
Fire Strategy Plan

PRELIMINARY

scale
1:100 @ A1
1:200 @ A3

drawn by
KK

checked by
SAS

date of first issue
24.11.21

project
R9110-FBM-21-02-DR-A- 1612

revision
P1

Open plan flats considered acceptable based on provision of Grade D LD1 fire alarm and AWFSS in the flat, and the cooking facilities is located at least 1.8m from the escape route. This applies to all other open plan flats.

Unprotected Area allowed according to BS 9999 Figure 23

All residential apartments are to be provided with a Grade D LD1 fire alarm and detection system designed, installed and commissioned in accordance with BS5839-6:2013. The common residential areas to be provided with an L5 system.

KEY

- 240 mins REI
- 120 mins REI
- 90 mins REI
- 60 mins REI
- 30 mins REI
- Vented Area
- AOV AOV to Upper Floors
- B AOV AOV to Basement

- FD 30s fire door
- FD 60s fire door

IFC Group

PROJECT REF:
22338 St Modwen - St Andrews Park Uxbridge

TITLE:
FIRE STRATEGY DRAWING

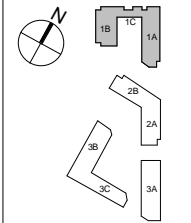
DRAWN:
ZH/QA-KH

DATE:
10/12/2021

notes

FD30S
Rated
Door w/
smoke
seal

FD60S
Rated
Door w/
smoke
seal



P1 RET SAS 24.11.21 Preliminary Fire Strategy Drawings
REV BY CHKD DATE AMENDMENT DETAILS

project
Uxbridge Town Centre West
St. Andrew's Park, Uxbridge

client
St. Modwen Homes

FraserBrownMacKenna Architects
15-16 Featherstone St. London EC1Y 8SL www.fbmarchitects.com
T:020 7251 0543

drawing title
Block 1 Level 03
Fire Strategy Plan

PRELIMINARY

scale
1:100 @ A1
1:200 @ A3

drawn by
KK

checked by
SAS

date of first issue
24.11.21

project company year level type role number
R9110-FBM-21-03-DR-A- 1613

revision
P1

Open plan flats considered acceptable based on provision of Grade D LD1 fire alarm and AWFSS in the flat, and the cooking facilities is located at least 1.8m from the escape route. This applies to all other open plan flats.

Unprotected Area allowed according to BS 9999 Figure 23

All residential apartments are to be provided with a Grade D LD1 fire alarm and detection system designed, installed and commissioned in accordance with BS5839-6:2013. The common residential areas to be provided with an L5 system.

KEY

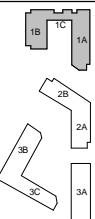
- 240 mins REI
- 120 mins REI
- 90 mins REI
- 60 mins REI
- 30 mins REI
- Vented Area

AOV AOV to Upper Floors
B AOV AOV to Basement

- FD 30s fire door
- FD 60s fire door

notes

- D30S Rated door w/ smoke seal
- FD60S Rated Door w/ smoke seal



P1 RET SAS 24.11.21 Preliminary Fire Strategy Drawings
REV BY CHKD DATE AMENDMENT DETAILS

project
Uxbridge Town Centre West
St. Andrew's Park, Uxbridge



client
St. Modwen Homes



FraserBrownMacKenna Architects
15-16 Featherstone St. London EC1Y 8SL www.fbmarchitects.com
T:020 7251 0543

drawing title
Block 1 Level 04
Fire Strategy Plan

PRELIMINARY

scale
1:100 @ A1
1:200 @ A3
drawn by
KK
checked by
SAS
date of first issue
24.11.21
revision
R9110-FBM-21-04-DR-A- 1614
DRAWING NUMBER
P1

DRAWN:
ZH/QA-KH

DATE:
10/12/2021