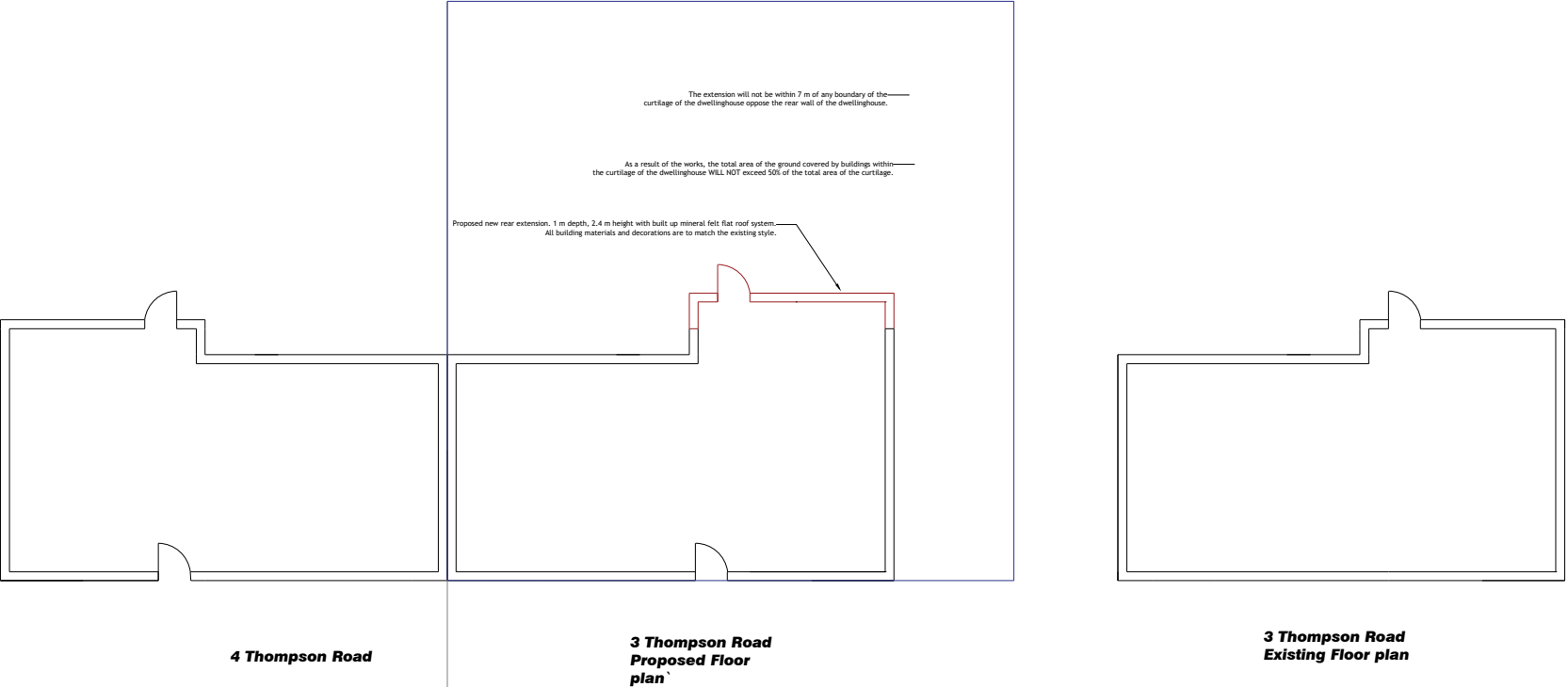


All measurements are to be checked on-site for validation and authenticity with layouts indicative only

No amendments or copies are to be produced without prior consent from Rapleys LLP. Do not scale from drawing

Ref	Date	Revision



Legend:  
Site plan outline

Client  
Annington Homes

Job Title  
**Annington Homes Site,  
Grays Rd, Uxbridge,  
London, UB10 0QZ**

Drawing Title  
**Existing & Proposed Floor  
Layout**

Scale  
1:200

Size  
A3

Date  
April 2023

Drawn  
DH



RAPLEYS LLP  
66 St James Street,  
London SW1A 1NE  
Tel: 0370 777 6292  
[www.rapleys.com](http://www.rapleys.com)

DRAWING NO. - 23-00093 - FP - 301  
Rev A

3 Thompson Road - Floor Plan Scale: 1:200 @ A3

