

Notes

This drawing is subject to copyright.
Do not scale from this drawing.

Based on drawing by
Drawing number



LEGEND

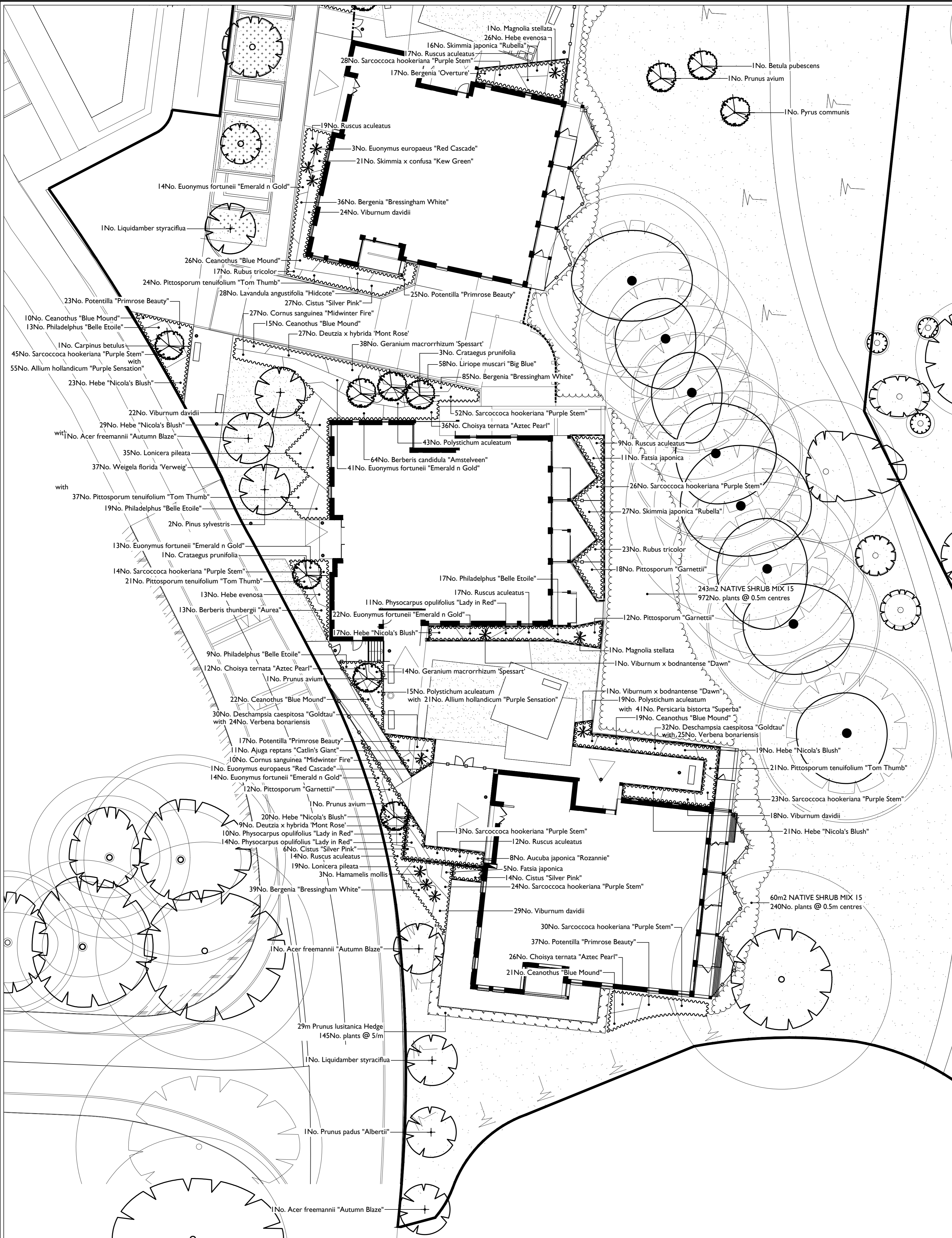
- Application boundary
- Soft Landscape
- Proposed semi-mature tree planting (20-25 girth)
- Proposed heavy standard tree planting (18-20 girth)
- Proposed feature shrub planting
- Proposed shrub and herbaceous planting
- Proposed evergreen hedge planting
- Proposed amenity grade turf
- Proposed wildflower meadow seeding - Emorsgate EM3 Special General Purpose mix or similar approved

HORTICULTURAL NOTES

- All work to be carried out to the satisfaction of the Landscape Architect.
- No planting position shall be altered without the approval of the Landscape Architect.
- Engineer to confirm foundation details in accordance with practice note 4.2 of the NHBC guide.
- All topsoil and subsoil is to be analysed by a qualified soil scientist and the findings supplied in report form including recommendations to bringing soils up to specification. The soil survey shall include analysis of representative topsoil and subsoil samples (sample numbers to be determined by the soil scientist) in accordance with the testing schedule.
- Landscape areas shall be topsoiled to the following minimum depths: Amenity grassed areas - 100mm. Shrub areas - 300mm. Topsoil to BS3882:2015.
- Turfed areas to be rotavated and topsoil levelled as required, remove debris and stones above 30mm dia. Add pre-seeding fertilizer to manufacturer's specification. Turf shall be weed free, laid from plants (to avoid damage) with broken joints and well butted up. Water as necessary to avoid shrinkage.
- Trees to be selected and planted in accordance with BS 8545:2014. Tree pits in soft should be no deeper than the existing rootball or container depth and should have a diameter at least 75mm greater than the root system. Unless specified trees are to be secured by stakes. 14-16cm girth trees and below by single stake and 18-20cm girth trees and above to be double stakes. Trees to be secured with a minimum (500mm) with biodegradable ties. Stakes to be placed outside of the rootball and extend at least 450mm into the ground. Once the tree has established stakes are to be removed.
- Each new tree pit shall incorporate a seep hose system to facilitate a hose being inserted to avoid unnecessary water loss. All trees planted in grass shall be fitted with mower/trimmer guards or mulch with a min 1000mm diameter circle of mulch away from the main stem/trunk.
- Where trees are to be planted in close proximity to public services such as foul, surface and mains water, an appropriate root barrier such as ReRoot600 to 2000 or equivalent is to be installed to a depth below invert levels of services.
- All preparations, both hard and soft under/around trees to be designed to be fitted out by hand to accommodate the roots (min. 300mm). Plants to be firmed, watered in and dead/damaged branches removed after planting.
- The use of pesticides (herbicides, insecticides, fungicides and slug pellets etc) should be discouraged to prevent cumulative fatal effects to animals via the food chain, particularly invertebrates, birds and/or mammals. Any pesticides used should be non-residual with a minimum 1000mm diameter circle of mulch away from the main stem/trunk.
- A slow release fertilizer shall be applied after planting in accordance with manufacturer's instructions.
- All plant beds where access to ground floor windows is required are to have 400mm gravel strip offset from building facades. Gravel to be pea shingle or similar approved.
- All planted areas to be mulched with a medium grade bark mulch to a minimum depth of 50mm after plants have been well watered. Care must be taken not to smother the plants.
- Planting will commence during the first planting season (mid Nov-mid March) after substantial completion of the site.
- Where appropriate hedge species shall be pruned by up to one third to promote bushy growth.
- Any tree, shrub or area of grass shall be replaced within a period of five years if they die within the next planting season after planting with another such plant of similar size and species.

PODIUM DECK HORTICULTURAL NOTES

- All work to be carried out to the satisfaction of the Landscape Architect.
- Landscape areas on podiums shall be cultivated to the following minimum depths: Trees up to 20cm girth and multi-stems - 1000 x 1000 x 900mm. Shrub areas - 500mm. Grass areas - 200mm with attenuation layer below and 250mm without attenuation. Back fill landscape areas with multi-purpose topsoil to BS 3882:2007 (to be confirmed with structural engineer) to a maximum depth of 350mm. Install free-draining, sandy subsoil below.
- Prior to filling of planters with topsoil the contractor shall inspect planters and ensure sufficient drainage is provided. Any lack of drainage holes shall be immediately brought to the attention of the design team.
- All trees to be underground guyed with guying wires attached to podium slab. Each tree pit shall incorporate a seep hose system to facilitate a hose being inserted to avoid unnecessary water loss.



Plant Schedule

Trees						
QTY	UNIT	PLANT NAME	STOCK	GIRTH	HEIGHT	NOTES + HEIGHT AFTER 25YRS
2	No.	Acer campestre	C	18-20cm	Min. 4.5	2m clear stem, semi mature - Mature Height 10m
7	No.	Acer freemannii 'Autumn Blaze'	C	20-25cm	Min. 4.5	2m clear stem, semi mature - Mature Height 10m
1	No.	Betula pubescens	C	18-20cm	Min. 4.5	2m clear stem, semi mature - Mature Height 10m
1	No.	Betula utilis 'Jaquemontii'	C	16-18cm	Min. 4.5	2m clear stem, semi mature - Mature Height 10m
2	No.	Carpinus betulus	C	18-20cm	Min. 4.5	2m clear stem, semi mature - Mature Height 10m
6	No.	Crataegus prunifolia	C	18-20cm	Min. 4.5	2m clear stem, semi mature - Mature Height 6m
3	No.	Liquidamber styraciflua	C	20-25cm	Min. 4.5	2m clear stem, semi mature - Mature Height 10m
7	No.	Pinus sylvestris	C	20-25cm	Min. 4.5	2m clear stem, semi mature - Mature Height 10m
3	No.	Prunus avium	C	18-20cm	Min. 4.5	2m clear stem, semi mature - Mature Height 10m
1	No.	Prunus padus 'Albertii'	C	20-25cm	Min. 4.5	2m clear stem, semi mature - Mature Height 10m
1	No.	Pyrus communis	C	18-20cm	Min. 4.5	2m clear stem, semi mature - Mature Height 6m
5	No.	Tilia cordata 'Green Spire'	C	18-20cm	Min. 4.5	2m clear stem, semi mature - Mature Height 10m

Plant Mixes

PERCENT	QTY	PLANT NAME	STOCK	SIZE
63m2	NATIVE SHRUB MIX 15 planted @ 0.5m centres			
10%	255No.	Acer campestre	B Trans	80-100cm
5%	128No.	Cornus sanguinea	B Trans	60-80cm
10%	255No.	Corylus avellana	B Trans	80-100cm
55%	1404No.	Crataegus monogyna	B Trans	100-125cm
5%	128No.	Ilex aquifolium	C 3L	60-80cm
5%	128No.	Hedera helix	C 3L	30-60cm
5%	128No.	Prunus spinosa	B Trans	60-80cm
5%	128No.	Rosa canina	B Trans	60-80cm

Individual varieties to be planted in groups of 3-9.

Hedges				
QTY	UNIT	PLANT NAME	STOCK	SIZE
29m	No.	Prunus lusitanica	C 5L	40-60cm
145m	No.	Plants spaced @ 5/m in a Single Row		

Shrubs

QTY	UNIT	PLANT NAME	STOCK	SIZE	SPACING
111	No.	Aucuba japonica 'Rozannie'	C 5L	40-60cm	5/m2
124	No.	Berberis candidula 'Amstelveen'	C 5L	40-60cm	5/m2
40	No.	Berberis thunbergii 'Aurea'	C 5L	30-40cm	5/m2
174	No.	Ceanothus 'Blue Mound'	C 5L	40-60cm	5/m2
116	No.	Choisya ternata 'Aztec Pearl'	C 5L	40-60cm	5/m2
85	No.	Cistus 'Silver Pink'	C 5L	40-60cm	5/m2
34	No.	Cistus x danserianus 'Decumbens'	C 3L	40-60cm	7/m2
62	No.	Cornus sanguinea 'Midwinter Fire'	C 5L	40-60cm	5/m2
42	No.	Deutzia x hybrida 'Mont Rose'	C 5L	60-80cm	5/m2
8	No.	Euonymus europaeus 'Red Cascade'	C 10L	80-100cm	1/m2
232	No.	Fatsia japonica	C 5L	30-40cm	3/m2
50	No.	Fuchsia magellanica var. molinae	C 3L	20-30cm	6/m2
10	No.	Hamamelis mollis	C 10L	60-80cm	1/m2
218	No.	Hebe 'Nicola's Blush'	C 5L	40-60cm	5/m2
189	No.	Hebe evenosa	C 5L	20-30cm	5/m2
71	No.	Ilex crenata	C 5L	40-60cm	6/m2
52	No.	Lavandula angustifolia 'Hidcote'	C 3L	20-30cm	5/m2
212	No.	Lonicera pileata	C 5L	40-60cm	5/m2
7	No.	Magnolia stellata	C 15L	60-80cm	1/m2
67	No.	Philadelphus 'Belle Etoile'	C 5L	40-60cm	4/m2
46	No.	Physocarpus opulifolius 'Lady in Red'	C 5L	40-60cm	5/m2
46	No.	Pittosporum 'Garnettii'	C 5L	30-40cm	3/m2
152	No.	Pittosporum tenuifolium 'Tom Thumb'	C 5L	40-60cm	5/m2
181	No.	Potentilla 'Primrose Beauty'	C 5L	40-60cm	6/m2
67	No.	Rubus tricolor	C 3L	20-30cm	6/m2
185	No.	Ruscus aculeatus	C 5L	30-40cm	5/m2
389	No.	Sarcococca hookeriana 'Purple Stem'	C 5L	40-60cm	6/m2
181	No.	Skimmia japonica 'Rubella'	C 5L	40-60cm	5/m2
205	No.	Skimmia x confusa 'Kew Green'	C 5L	40-60cm	5/m2
205	No.	Viburnum davidii	C 5L	30-40cm	5/m2
6	No.	Viburnum x bodnantense 'Dawn'	C 10L	80-100cm	1/m2
96	No.	Weigela florida 'Verweig'	C 3L	30-40cm	5/m2

Herbaceous plants

QTY	UNIT	PLANT NAME	STOCK	SPACING
37	No.	Ajuga reptans 'Catlin's Giant'	C 3L	7/m2
76	No.	Allium hollandicum 'Purple Sensation'	C 2L	7/m2
338	No.	Bergenia 'Bressingham White'	C 3L	9/m2
82	No.	Bergenia 'Overture'	C 3L	9/m2
72	No.	Deschampsia caespitosa 'Goldtau'	C 2L	9/m2
46	No.	Echinacea purpurea	C 2L	9/m2
50	No.	Geranium macrorrhizum 'Album'	C 3L	7/m2
107	No.	Geranium macrorrhizum 'Spessart'	C 3L	7/m2
50	No.	Heuchera 'Greenfinch'	C 2L	7/m2
103	No.	Liriope muscari 'Big Blue'	C 2L	11/m2
22	No.	Nepeta 'Six Hills Giant'	C 2L	5/m2
25	No.	Persicaria amplexicaulis 'Fretal'	C 2L	11/m2
94	No.	Persicaria bistorta 'Superba'	C 2L	11/m2
109	No.	Polystichum aculeatum	C 2L	5/m2
19	No.	Salvia officinalis 'Purpurascens'	C 2L	8/m2
60	No.	Tiarrella cordifolia	C 3L	7/m2
49	No.	Verbena bonariensis	C 2L	7/m2

Notes and Abbreviations

- B = Bare root (bagged)
- C = Container (or pot) grown, followed by size of the container (or pot).
- QTY = Quantity
- RY = Rootballed (balled and juvaped).
- SIZE = Height or Spread of juvenile plant.
- STOCK = Root condition/protection method eg Bare root.
- Trans = Transplant (or under seedling).
- Refer to specification for further information.
- All plants to be completely hardened off.
- Substitutions to be agreed with Landscape Architect.

Rev	Description	Date	Drawn	Checked
P2	Layout updated	08/12/16	TB	NK

PLANNING

Allen Pyke Associates
Landscape architecture Urban design Environmental planning

The Factory, 2 Acre Road,
Kingston upon Thames,
Surrey KT2 6EF

T 020 8549 3434 F 020 8547 1075
www.allenpyke.co.uk
KINGSTON UPON THAMES CAMBRIDGE

A registered practice of the Landscape Institute
Client VSM UXBRIDGE Scale 1:200@A1

Project THE DICE, ST ANDREWS PARK By/Chk AC/KN

Drawing title DETAILED PLANTING PLAN Date 18/11/16
(Sheet 2 of 2)

Drawing Number 2682-PP-02 Revision P2

