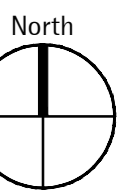


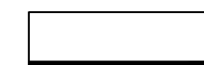
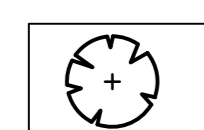
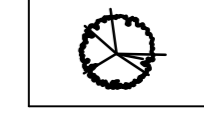
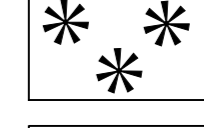
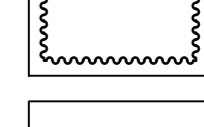

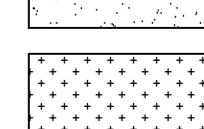

Notes

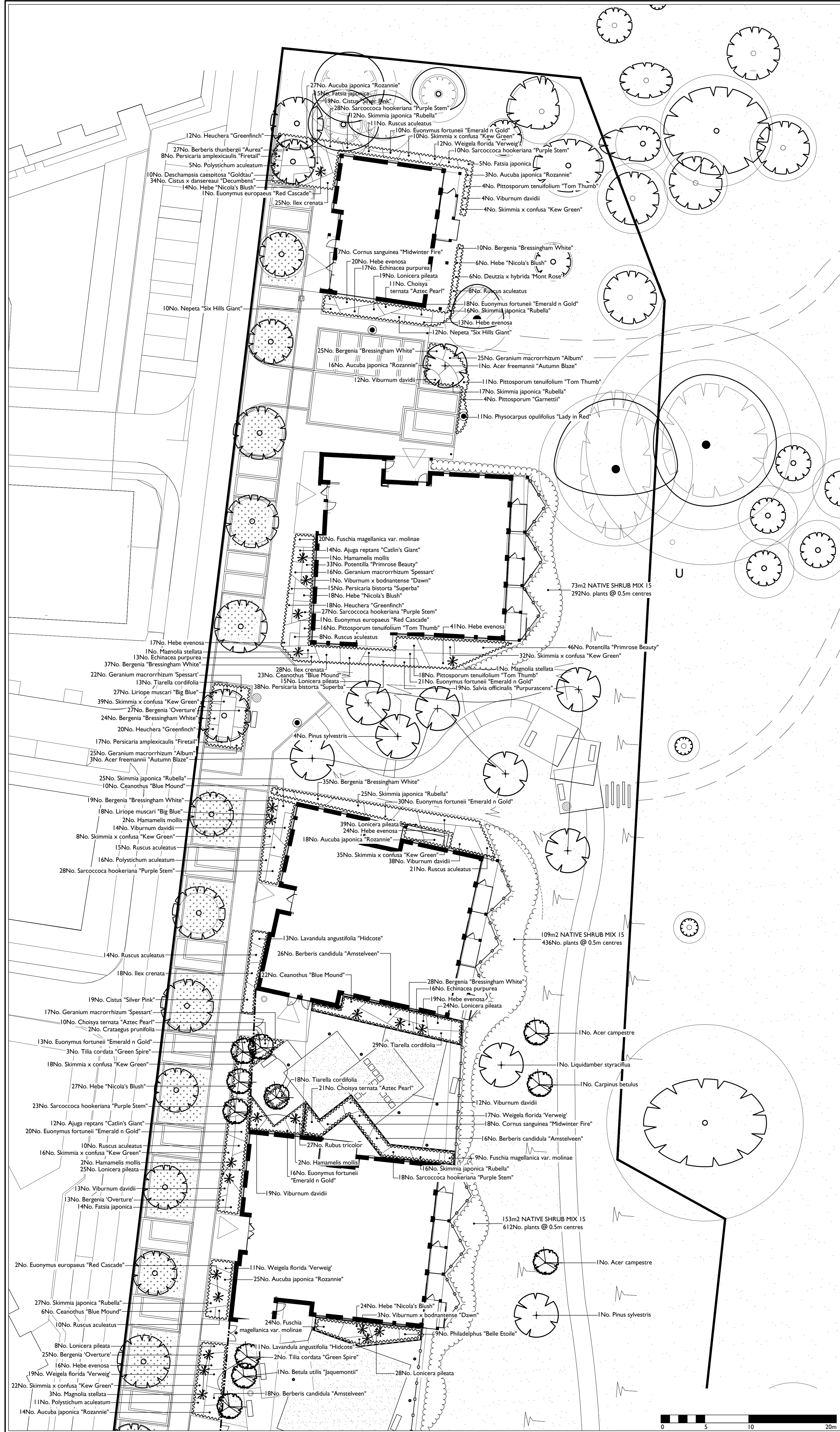
This drawing is subject to copyright.
Do not scale from this drawing.

Based on drawing by
Drawing number



LEGEND

-  Application boundary
- Soft Landscape**
-  Proposed semi-mature tree planting (20-25 girth)
-  Proposed heavy standard tree planting (18-20 girth)
-  Proposed feature shrub planting
-  Proposed shrub and herbaceous planting
-  Proposed evergreen hedge planting
-  Proposed amenity grade turf
-  Proposed wildflower meadow seeding - Emorsgate EM3 Special General Purpose mix or similar approved



73m² NATIVE SHRUB MIX 15
292No. plants @ 0.5m centres

109m² NATIVE SHRUB MIX 15
436No. plants @ 0.5m centres

153m² NATIVE SHRUB MIX 15
612No. plants @ 0.5m centres

P2	Layout updated	08/12/16	TB	NK
Rev	Description	Date	Drawn	Checked

Drawing Status
PLANNING

Allen Pyke Associates
Landscape architecture Urban design Environmental planning

The Factory, 2 Acre Road,
Kingston upon Thames,
Surrey KT2 6EF

T 020 8549 3434 F 020 8547 1075
www.allenpyke.co.uk
KINGSTON UPON THAMES CAMBRIDGE

A registered practice of the Landscape Institute
Client
VSM UXBRIDGE

Scale
1:200@A1
Project
THE DICE, ST ANDREWS PARK

By/Chk
AC/NK
Drawing Title
DETAILED PLANTING PLAN
(Sheet 1 of 2)

Date
18/11/16
Drawing Number
2682-PP-01
Revision
P2

