

# LAYOUT + USE

## Waste Collection

### WASTE MANAGEMENT STRATEGY

Waste management within the building will be through the use of dedicated Sluice and Disposal Hold rooms. Waste & recycling will be collected from these spaces and moved to the external Bin Store.

08.5

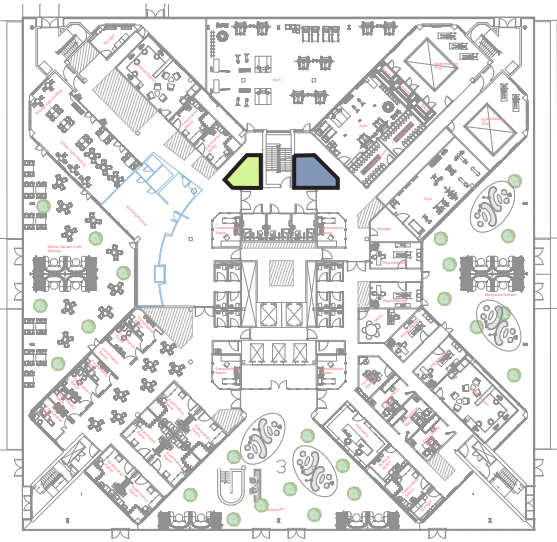
The Bin Store has a capacity for 15 (1700L) Waste Containers and collection is envisaged as occurring on a weekly basis.

LEGEND:

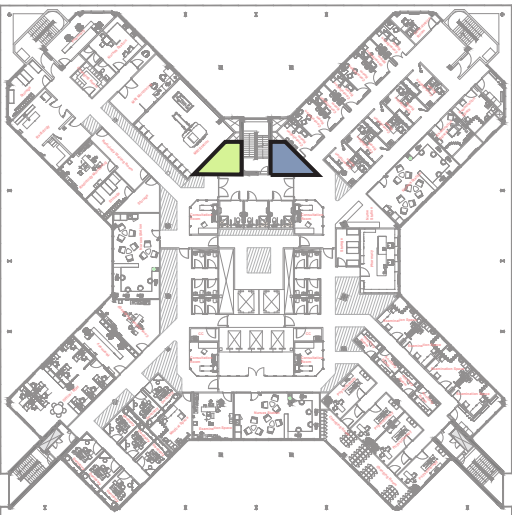
- SLUICE ROOM
- DISPOSAL HOLD (WASTE)
- BIN STORE (35m²)



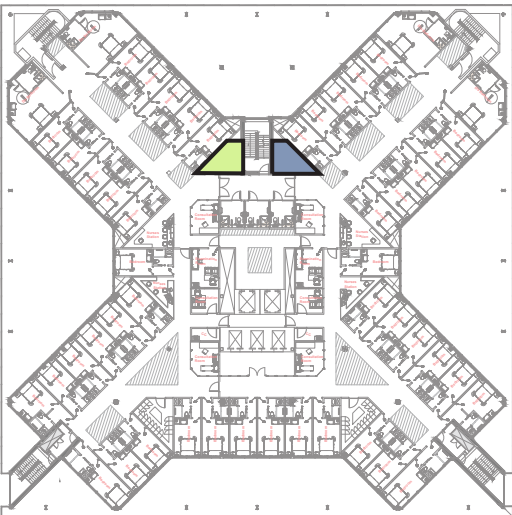
PROPOSED (TYPICAL) SITE BIN STORE



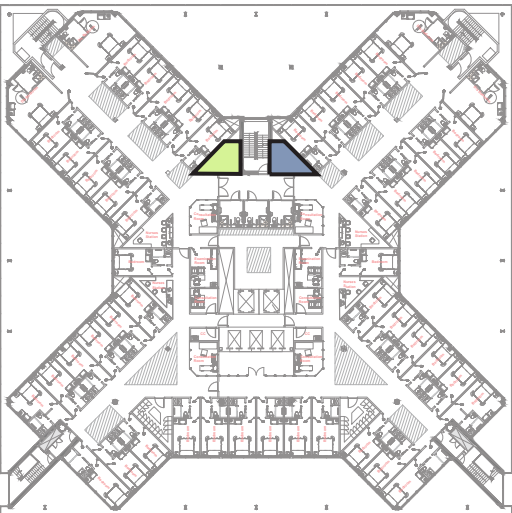
PROPOSED GROUND FLOOR



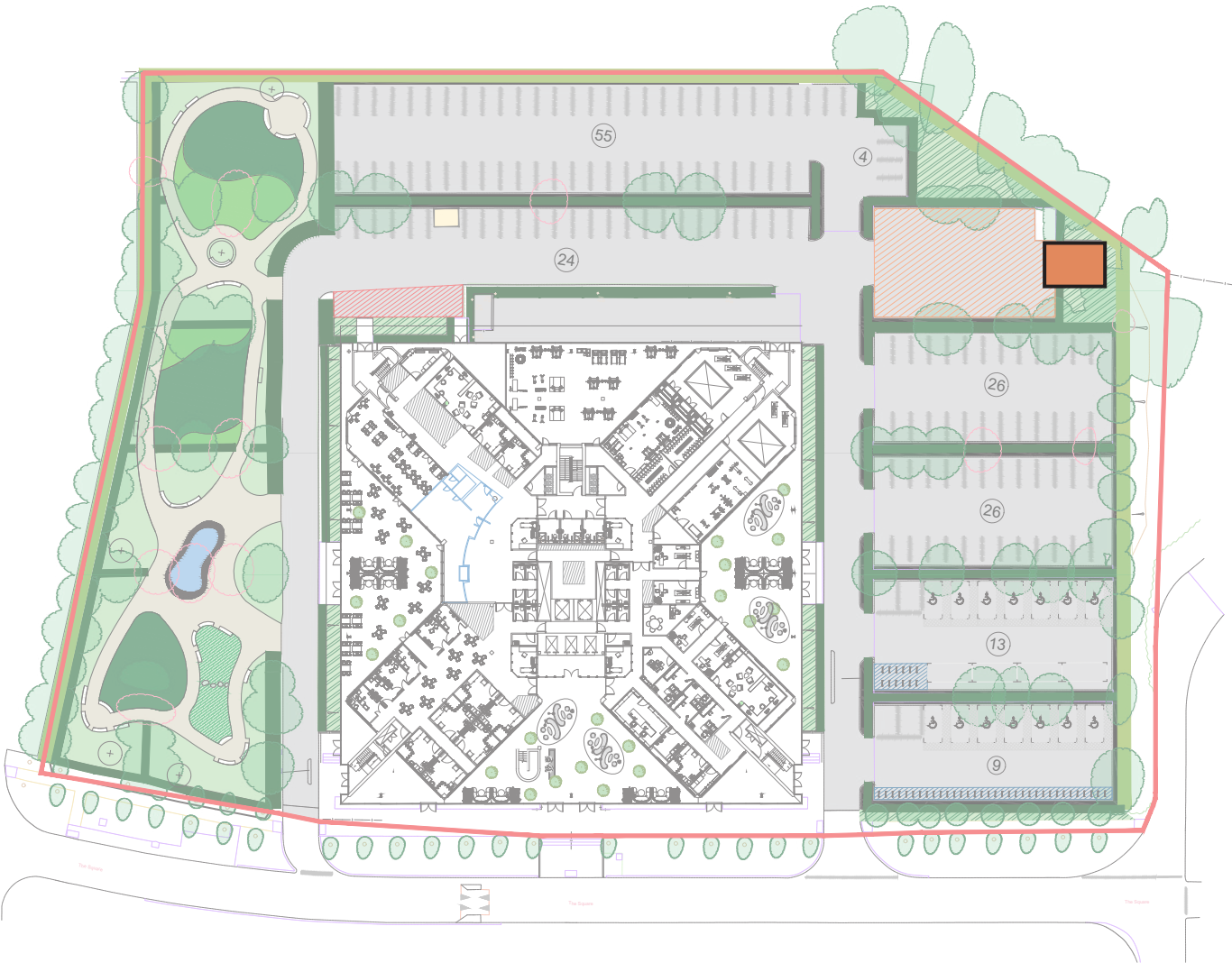
PROPOSED FIRST FLOOR



PROPOSED SECOND FLOOR



PROPOSED THIRD FLOOR



PROPOSED SITE PLAN