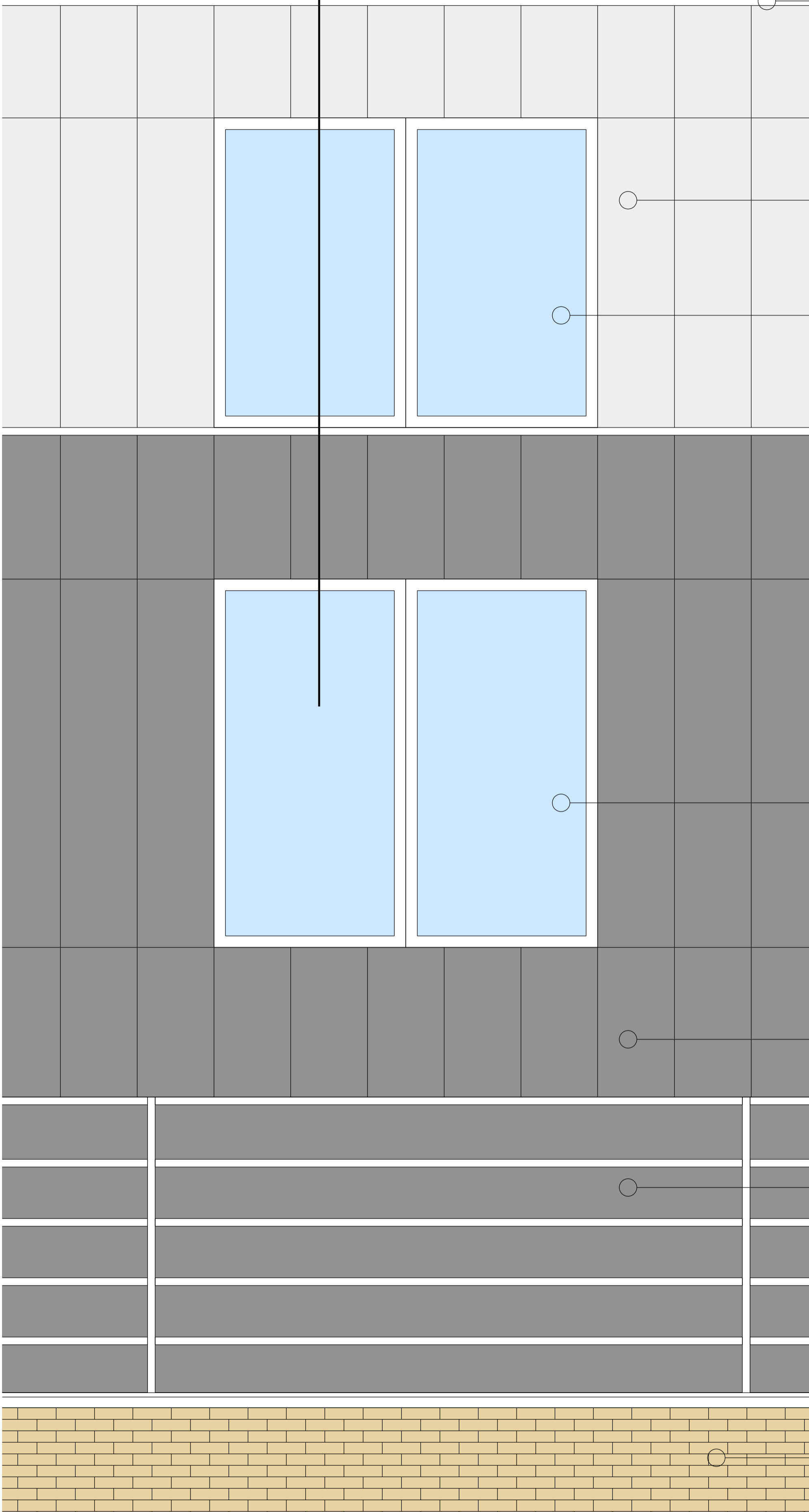
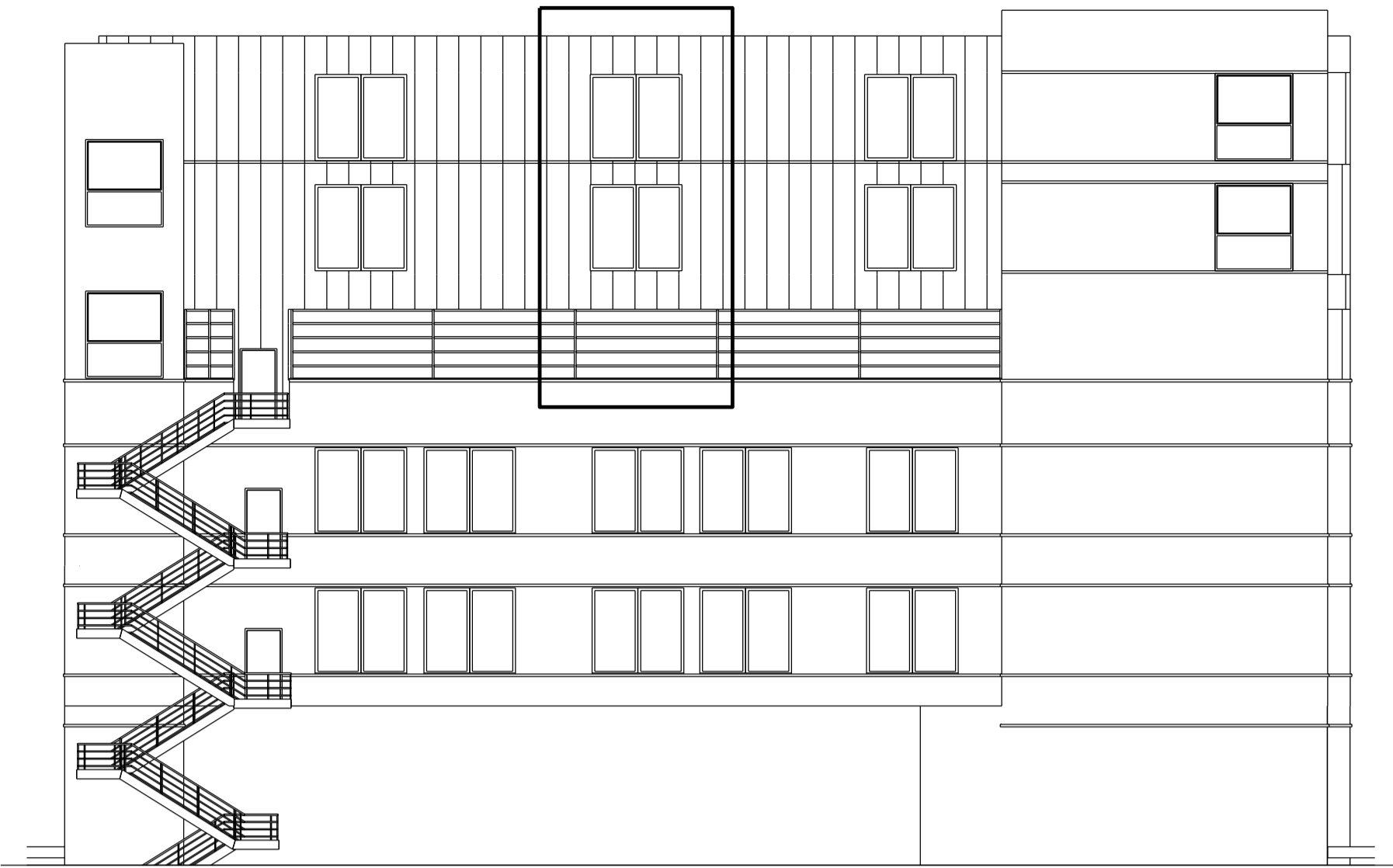
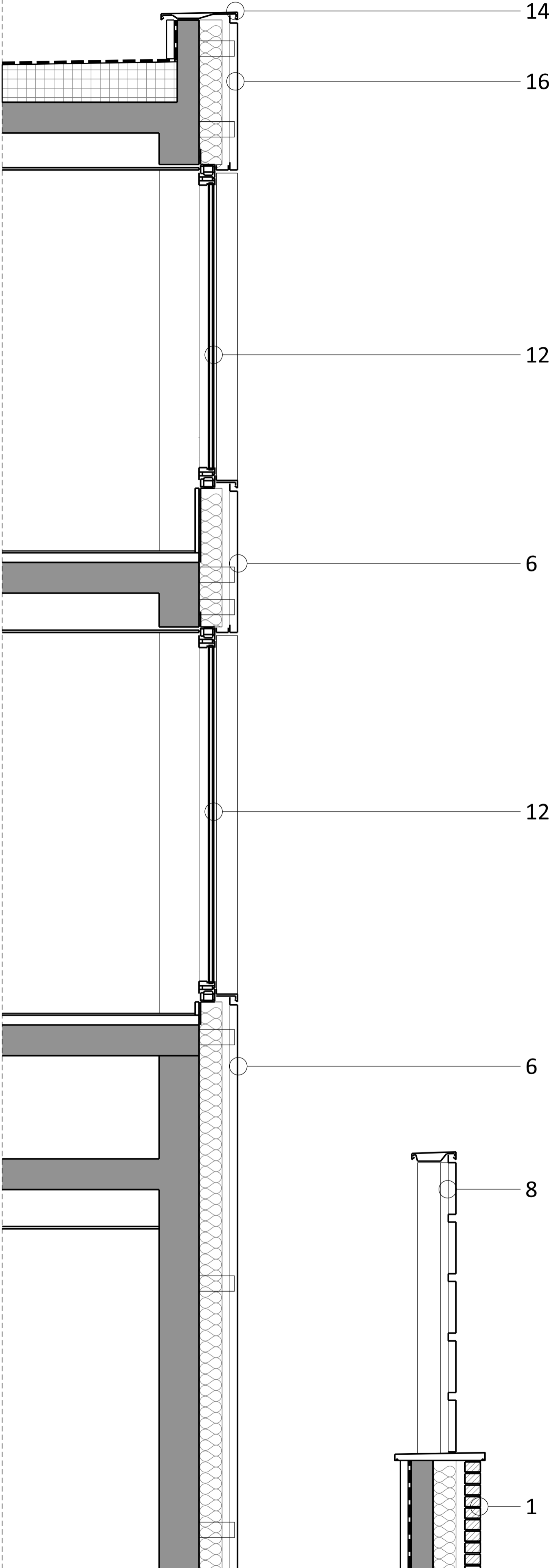


Elevation Detail

Section 3



Section 3 Detail



- Facade material key:
- 1. Existing yellow brick facade
 - 2. Existing grey metal cladding
 - 3. Existing light grey metal banding
 - 4. Existing light grey curtain wall
 - 5. Proposed yellow brick matching existing
 - 6. Proposed grey metal cladding
 - 7. Proposed grey curtain wall matching existing
 - 8. Grey metal plant screen
 - 9. Grey metal stairs
 - 10. Transparent glass panel
 - 11. Glass faced opaque parapet panel
 - 12. Grey metal window matching existing
 - 13. Light grey concrete horizontal banding
 - 14. Light grey parapet coping
 - 15. Existing grey brise soleil
 - 16. Proposed white metal cladding

0.5m 2m