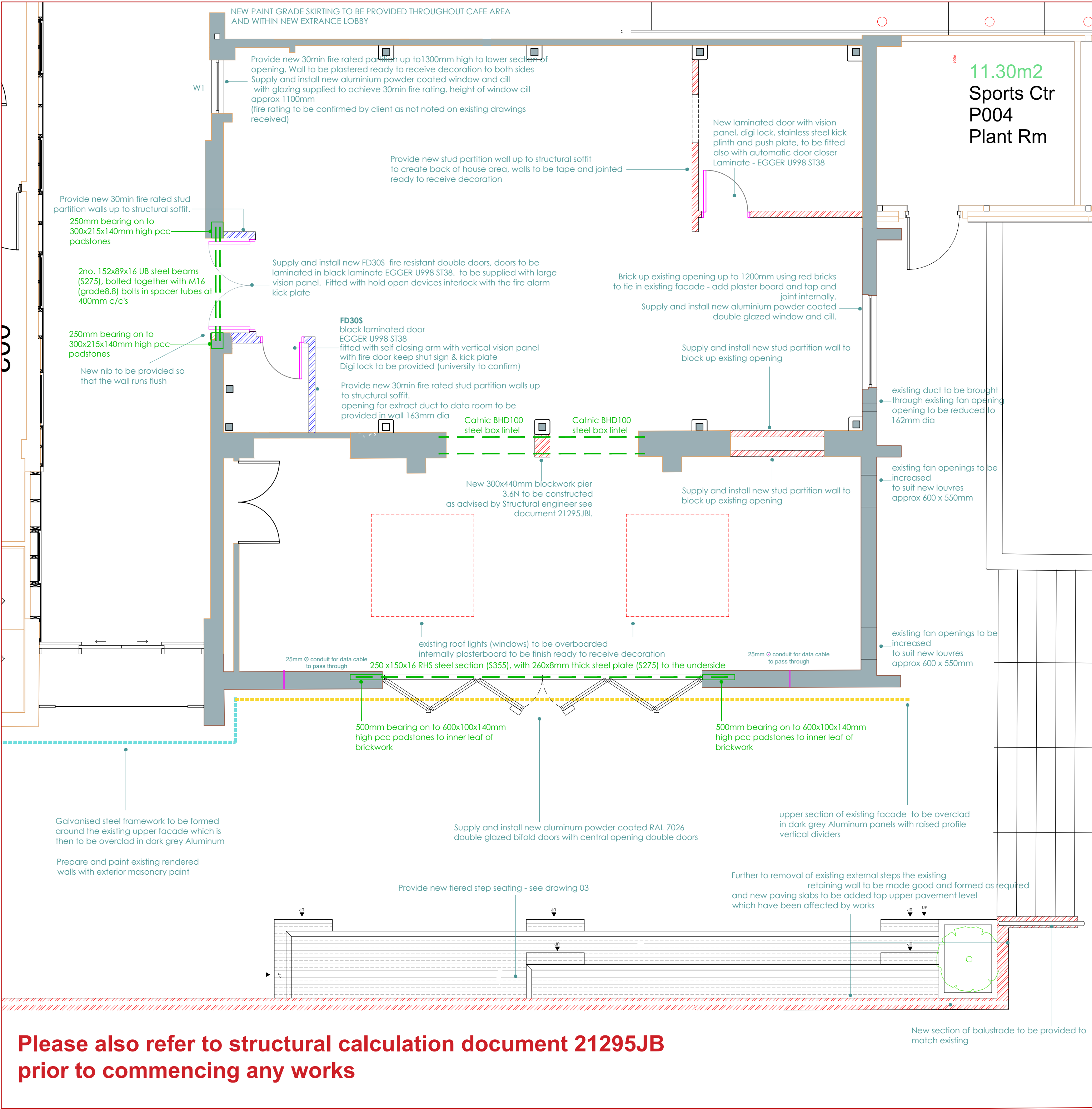
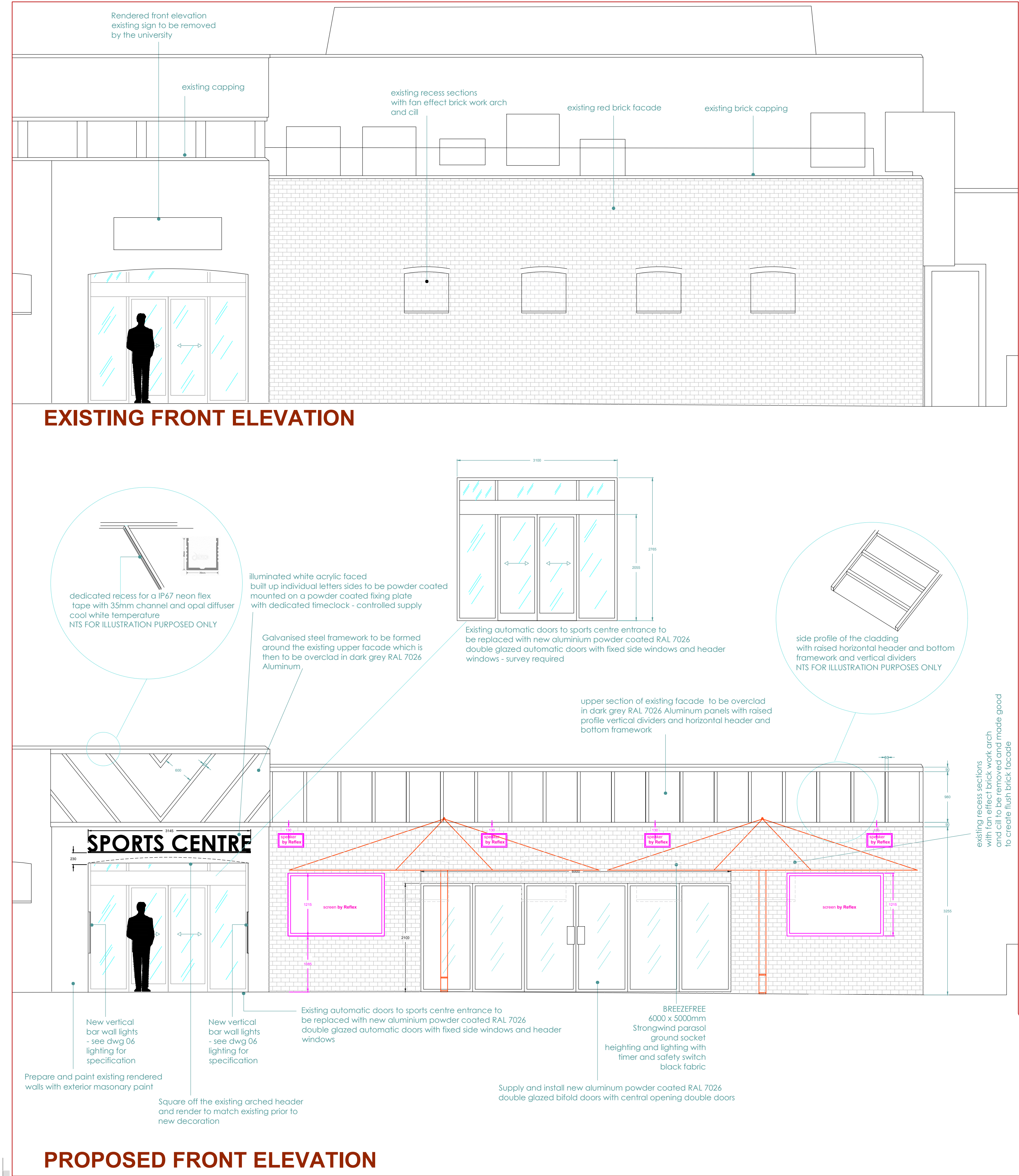


ITEM	COMMENTS	HEALTH AND SAFETY IMPLICATION	RISK	ITEM	COMMENTS	HEALTH AND SAFETY IMPLICATION	RISK	ITEM	COMMENTS	HEALTH AND SAFETY IMPLICATION	RISK	SPECIFICS RISK ASSESSMENTS AND REGISTER	ITEM	COMMENTS	HEALTH AND SAFETY IMPLICATION	RISK
Cable Ties Used In Installation	Wherever possible electrical cables should not be allowed to trail over the floor. All cables and hoses should be left in a neat and tidy order.	Electrocution, tripping hazard, damage caused by other equipment running over cables.	High	Commando Sockets	Where equipment is mobile electrical connections should be made via Commando sockets.	Best practice, assists with easy movement and cleaning of equipment.	Low	Grills	Do not locate grills over gas oven ranges, either solid top or open top.	Unit will overheat and deteriorate; operators can scald themselves on the handles, difficult for operator to reach rear hobs, cold burn	Medium	SPECIFICS RISK ASSESSMENTS AND REGISTER	Bench Mounted Grills	Where these units are mounted on benches, the following must be considered: 1. The bench to which it is to be mounted must have a safety reinforced top. 2. The bench must be rigid enough to support the grill. 3. A fence is made the same chain should be applied in order to protect services and restrict access.	The unit is top heavy and moving of item for cleaning could result in unit tipping over. Table should always be larger than the grills footprint by 50%. Castors must always be braked.	Medium
Bypass Valves	Water Softeners should be fitted with bypass valves so as to allow full use of the equipment being supplied during breakdowns and maintenance work.	Dishwashing by hand: poor sterilisation could lead to food poisoning.	Low	Safety Chain	Any flexible pipes fitted to gas appliances must be secured to a secure wall or floor mounting by suitably approved mobility restraints.	Non compliance with regulations, danger of gas leaks and explosion if gas hose or mountings are ruptured, death.	High	Water Boilers	Boilers will be fitted with overflows or drained drip trays and taken to a safe place.	Flooding causing damage to client's property.	Medium		Structure	Commercial equipment is heavy. Attention should be given to equipment loading if installing above ground level. Customer to ensure that floors are strong enough to support weight when fully loaded.	Collapse of floor causing costly damage and possible loss of life. Also rupturing of services which could lead to fire and explosions.	High
Softener Overflows	All water connected water softeners, where an overflow exists, must be connected to a permanent waste outlet.	Flooding of overflow will cause damage to client property.	Medium	Fryers	Where fryers are located adjacent to ranges or at the end of a line of equipment, side screens will be fitted.	Injury to staff if water mixes with hot oil, this will result in splattering causing serious burns.	High	Structure	Commercial equipment is heavy. Attention should be given to equipment loading if installing above ground level. Customer to ensure that floors are strong enough to support weight when fully loaded.	Collapse of floor causing costly damage and possible loss of life. Also rupturing of services which could lead to fire and explosions.	High					



Caveat: This drawing and any subsequent related drawings constitute an outline conceptual scheme only and may be subject to revision after completion of a full measured and structural survey and appraisal. No Local Authorities have yet been consulted regarding town planning, building control, emergency services, licensing and other relevant approvals, this scheme must be considered as possibly subject to consequent revision after this consultation process has been completed. Your attention is drawn to the risk assessment and individual design notes for the project identified at this stage to comply with current legislation.			
© This drawing is the property of Aggora Lockhart Projects which is a trading division of Bunzl UK Limited and must not be copied or reproduced in full or in part without express written permission.			
Do Not Scale From This Drawing.		All Dimensions To Be Confirmed On Site.	

Revision:	Description:	Date:	Rev By:
F	Elevation revised in accordance with site survey information received Structural requirements added to drawing in accordance with structural engineer report 221295JB	01.12.22	JHR

Revision:	Description:	Date:	Rev By:
E	Internal entrance to cafe re-designed therefore specification updated to suit	25.11.22	JHR
D	External umbrellas added to the drawing	20.10.22	JHR
C	New entrance doors to sports centre shown in plan, along with new wall configuration to existing electrical cupboard, make good wall following removal of high level fans noted on drawing	07.10.22	JHR
B	Entrance doors and windows replaced with new bifold doors, Sports centre signage re-positioned as required and arch to existing sports centre entrance to be modified as shown	26.09.22	JHR
A	Location of AV equipment shown on front elevation of bar, overboarding of roof lights noted on plan, design of external tiered seating revised	19.09.22	JHR

Accepting Signature:
Print Name:
Company:
Date:
Drawing Approval:

CLIENT: Brunel University - sports centre cafe				
Drawing Title: Construction Drawing				
Scale @ ISO A1 : 1:50		Drawn By : JHR		
Drawing Number : AGJ1068 -05		Revision : F		Date : 24.08.22
Drawing Status :	Preliminary	Information	Approvals	As Fitted / Built