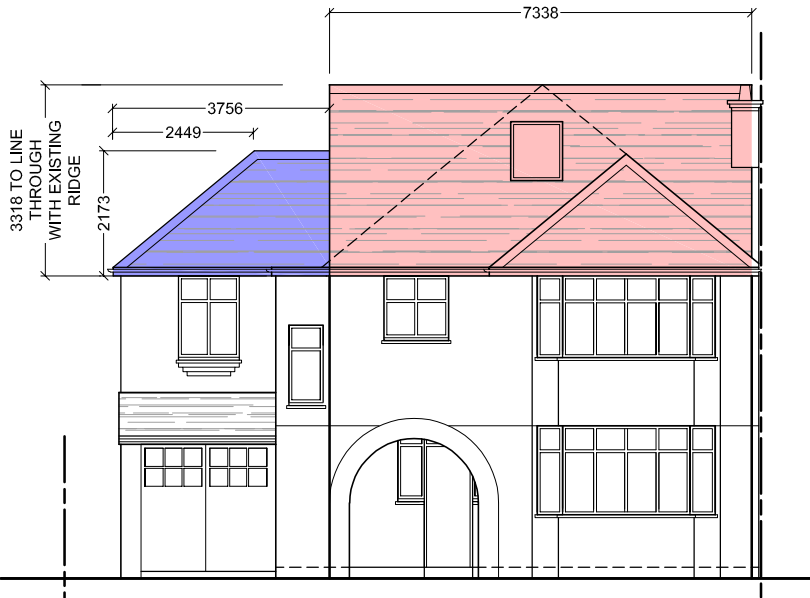
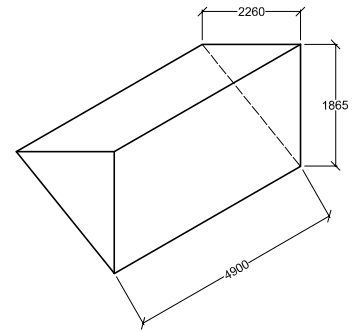
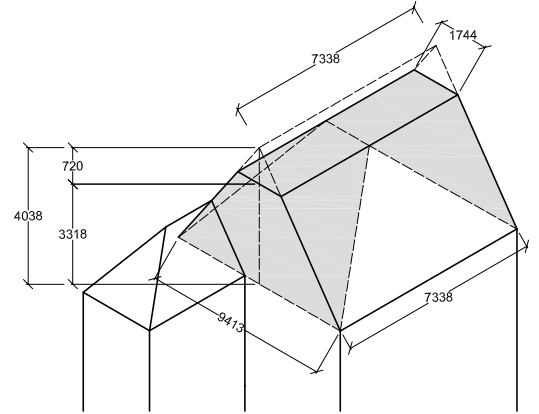
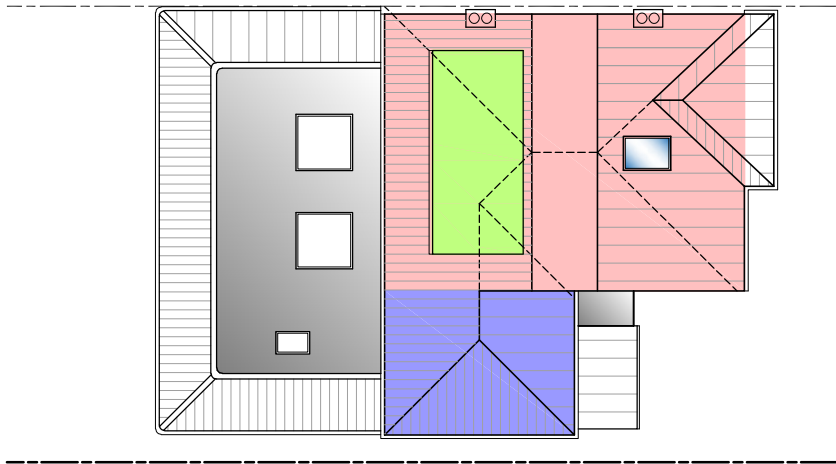


PROPOSED ROOF VOLUME CALCULATIONS



MAIN SECTION OF ROOF WITH HIP TO GABLE CHANGES HIGHLIGHTED IN RED

$$7.338 \times 4.038 \times (9.413 / 2) = 139.46\text{m}^3$$

$$7.338 \times 0.720 \times (1.744 / 2) = 4.6\text{m}^3$$

$$= 134.86\text{m}^3$$

+

REAR DORMER ROOF IN GREEN

$$= 10.33\text{m}^3$$

+

REMAINING SIDE SECTION OF ROOF HIGHLIGHTED IN BLUE

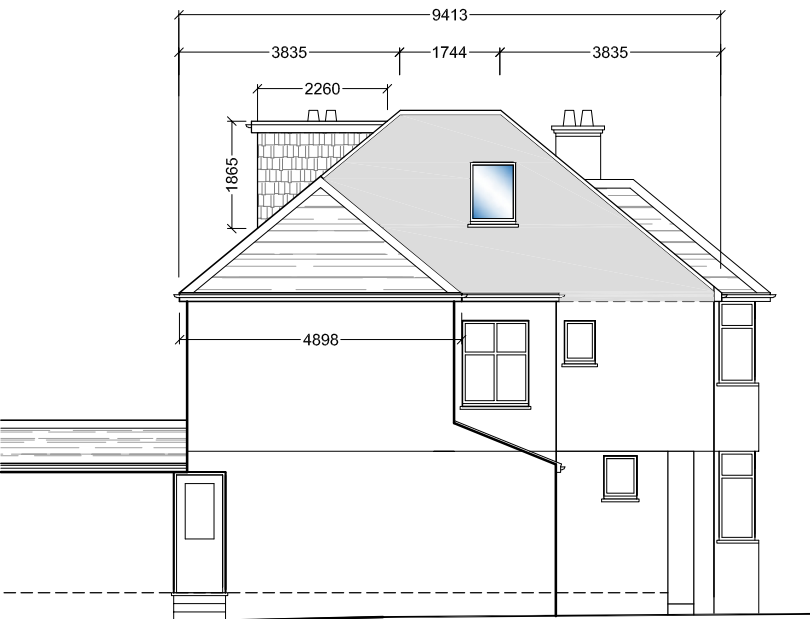
$$3.756 \times 2.173 \times (4.898 / 2) = 19.98\text{m}^3$$

$$(2.449 \times 2.173 \times 4.898) / 6 = 4.34\text{m}^3$$

$$= 15.64\text{m}^3$$

TOTAL VOLUME
160.83 m³

VOLUME INCREASE
160.83 - 110.87 = 49.96m³



SECTION OF ROOF ABOVE FRONT BAY WINDOW NOT INCLUDED IN CALCULATIONS