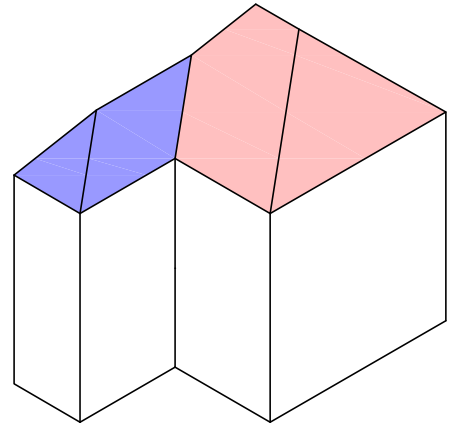
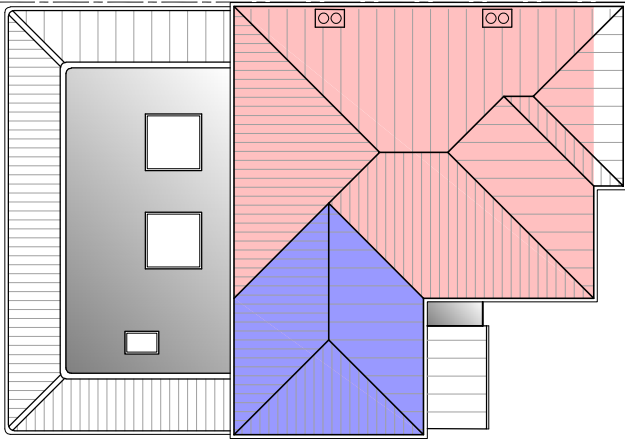


EXISTING ROOF VOLUME CALCULATIONS



MAIN SECTION OF ROOF
HIGHLIGHTED IN RED

$$7.670 \times 1.744 \times (3.318 / 2) = 22.19\text{m}^3$$

$$+$$

$$7.670 \times (3.835 \times 2) \times (3.318 / 3) = 65.06\text{m}^3$$

$$= 87.25\text{m}^3$$

+

SIDE SECTION OF ROOF
HIGHLIGHTED IN BLUE

$$6.070 \times 2.173 \times (4.898 / 2) = 32.30\text{m}^3$$

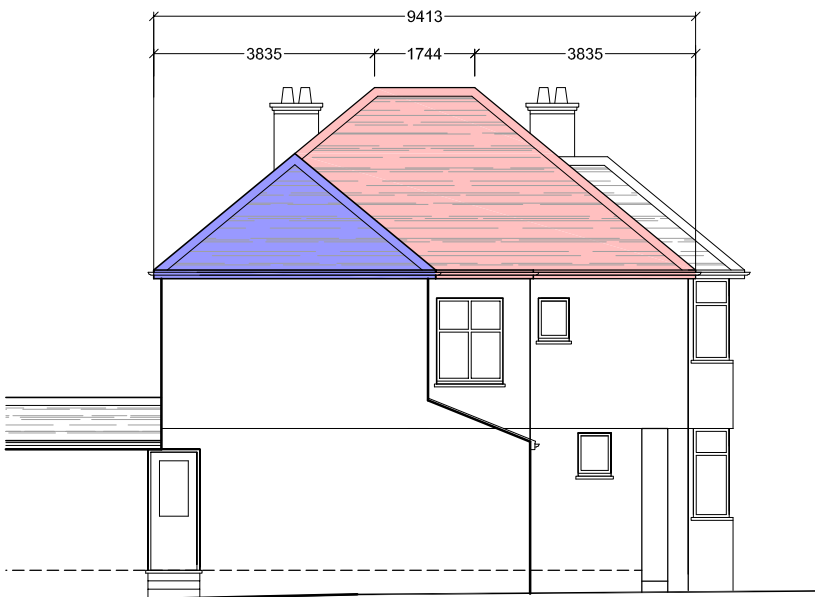
$$-$$

$$(2.449 \times 2.173 \times 4.898) / 6 \times 2 = 8.68\text{m}^3$$

$$= 23.62\text{m}^3$$

TOTAL VOLUME

110.87 m³



SECTION OF ROOF ABOVE FRONT BAY WINDOW NOT INCLUDED IN CALCULATIONS