

SITE REQUIREMENTS (By customer unless specifically covered in STL quotation)

Services
Electric - E1 x3 (Cyclone)
3 Phase Earth + Neutral
32 amp isolator req 1400 AFFL

Cyclone with Aquadry option
50 amp isolator req 1400 AFFL
Max running Current 35 amp

Electric - E2 x1 (Paint Mixing Room)
With/Without Heater option
3 Phase Earth + Neutral
16 amp isolator req 1400 AFFL
Max running current 7 amp

Electric - E3 x1 (Tempo)
3 Phase Earth + Neutral
With Aquadry and air supply
50 amp isolator req 1400 AFFL
Max running current 43 amp

Without Aquadry option
25 amp isolator req 1400 AFFL
Max running current 20 amp

Electric - E4 x1 (Tempo Extr.)
3 Phase Earth + Neutral
10 amp isolator req 1400 AFFL
Max running current 6 amp

Gas - G1 x3 (Cyclone)
15.1m³ per hour @ 21 mbar
1" connection
Burner Rating 220 kW
Consumption 168 kW/hr max

-----Alternative Fuels-----
Gas - G1 x3 (Cyc. Propane)
15.72 Kg per hour @ 37 mbar
1" connection
Burner Rating 220 kW
Consumption 168 kW/hr max

Oil - O1 x3 (Cyclone)
21 Litres per hour
0-10 psi max pressure
-----Alternative Fuels-----

Air - A1 x4 (Cyclone&Tempo)
Connection For 3 Stage Filter Regulator

Air - A3 x1 (Tempo)
Air Isolator @ 3500
Connection For 3 Stage Filter Regulator

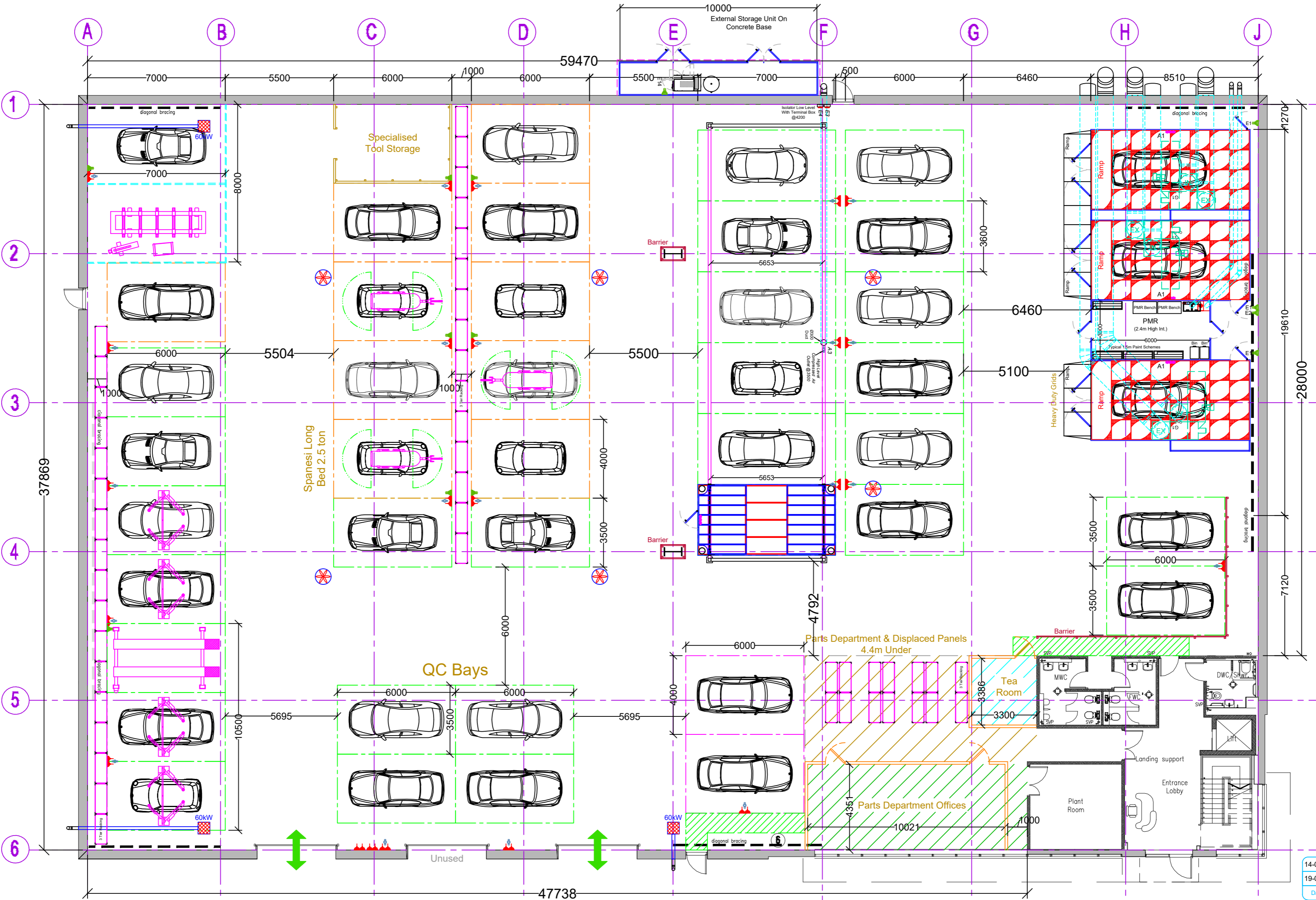
Fire Beacon Option (Per Booth/PMR)
1x Zero voltage/norm. closed input
(Booth shutdown signal)
1x 24v power supply input
(Beacon power supply)
Connection to the fire beacon is NOT by STL this will be by the relevant fire system contractor

Groundworks
Smooth and level floor required for spraybooth installation.
Floor protection is always the responsibility of the customer unless STL have been given an order to supply.

Wall works required
Cut and weatherproof holes for duct work
6 off Ø850mm, 1 off Ø350mm, 2 off Ø250mm, 3 off Ø200mm & 3 off Ø250mm (Oil) (To suit Ø800, Ø300, Ø200mm, Ø150mm & Ø200 (Oil) spiral duct). Anchor points for 2-off rigid stays for extract duct.
Extract ducting height will be to 3m above ridge height (unless specified differently by customer)

Access plant if required (Subject to site survey by Project Engineer) for safe working at height.

Planning Consents required
Local planning approval
Environmental Health Officer
Health & Safety
Fire department / Petroleum Officer



- Double Compressed Air Outlet
- Pressure Regulator
- 3 Stage Filter Regulator
- 3 Phs Isolator
- 60kW Workshop Heater
- Workshop Fan
- 1phs Double Socket & Air Connection
- 3 Phs Socket, 1phs Double Socket & Air Connection

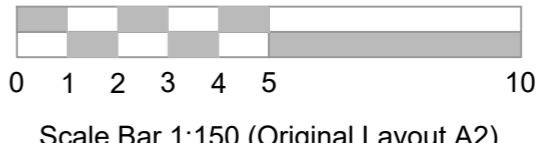
STL Cyclone II
Internal Dimensions
8.0x4.0x3.5m High

STL Cyclone II
Internal Dimensions
8.0x4.0x3.0m High

STL Cyclone II
Internal Dimensions
8.0x4.0x3.0m High

STL Paint Mixing Room
Internal Dimensions
6.0x3.0x2.4m High

STL - 6 Space Tempo
Overall Dimensions
22.4x7.0x4.2m High



14-08-23	N	Wash Bays Omitted	IR
19-05-23	M	Corridor Created, Notes Updated	IR
Date:	Rev:	Revision Information:	By:

STL
SPRAYBOOTH TECHNOLOGY LTD
8 Ballingdon Hill Industrial Estate, Sudbury, Suffolk, CO10 2DX.
Tel: 01787 313550 Fax: 01787 313542
E-mail: enquiries@sprayboothtechnology.co.uk

Client:	Veetec		
Site:	Hayes		
Project:	Layout *Option 1* Cyclone Booths, Tempo & Mixing Room		
Drawing No:	Scale:	Date:	
11971-01	1:150@A2	08-12-22	
Drawn By:	Checked By:	Revision:	
IR	JD & KD	N	