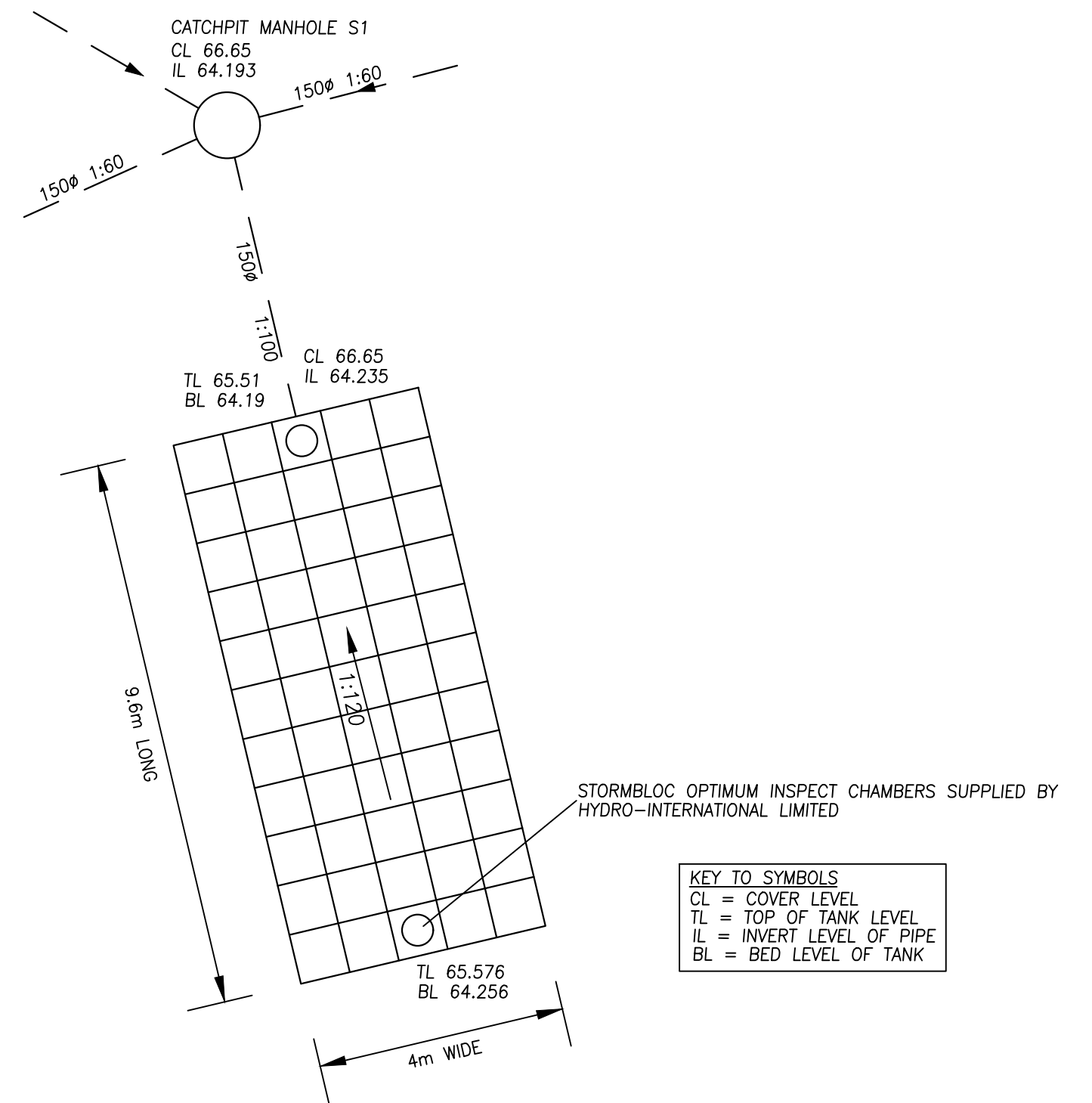
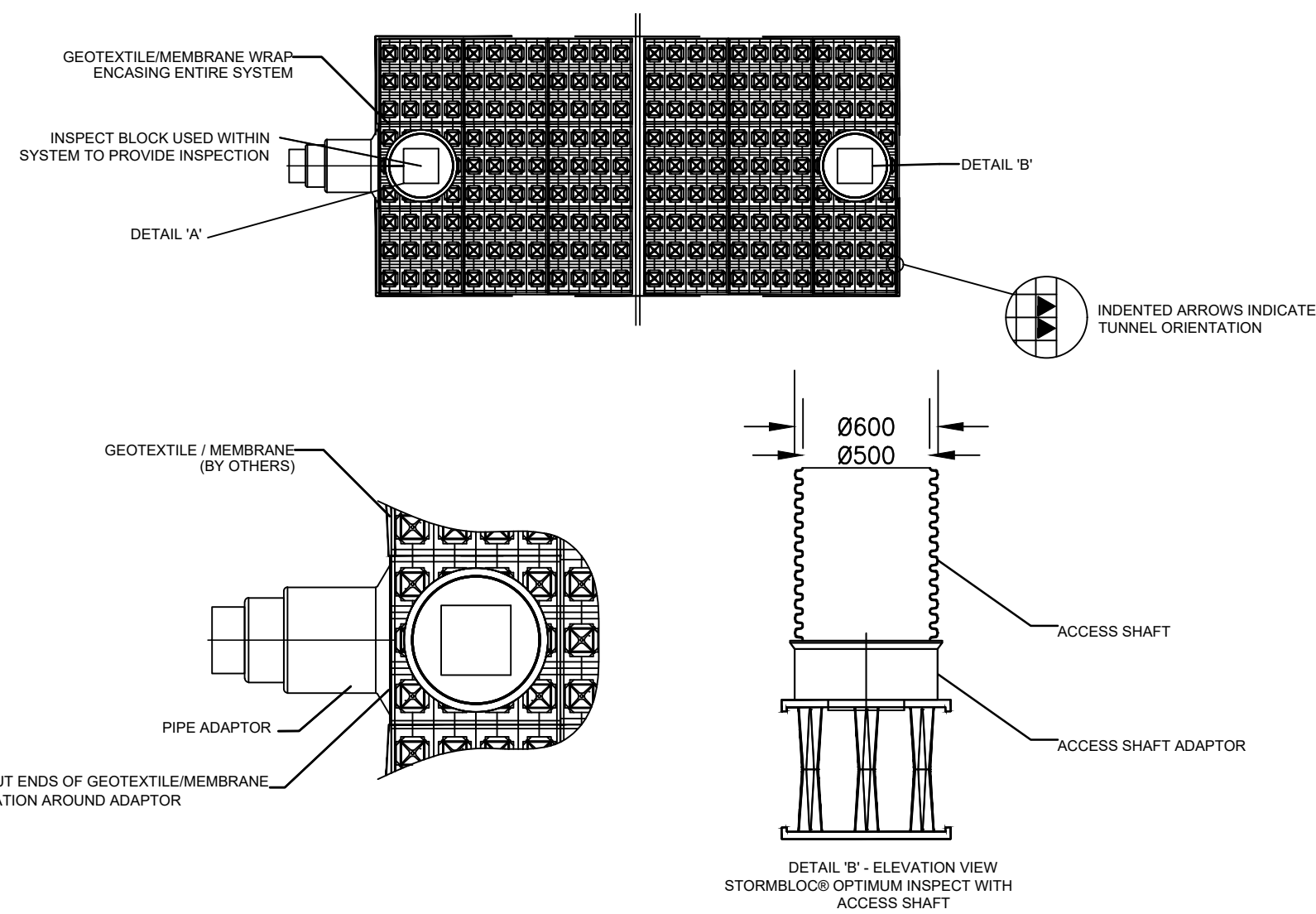
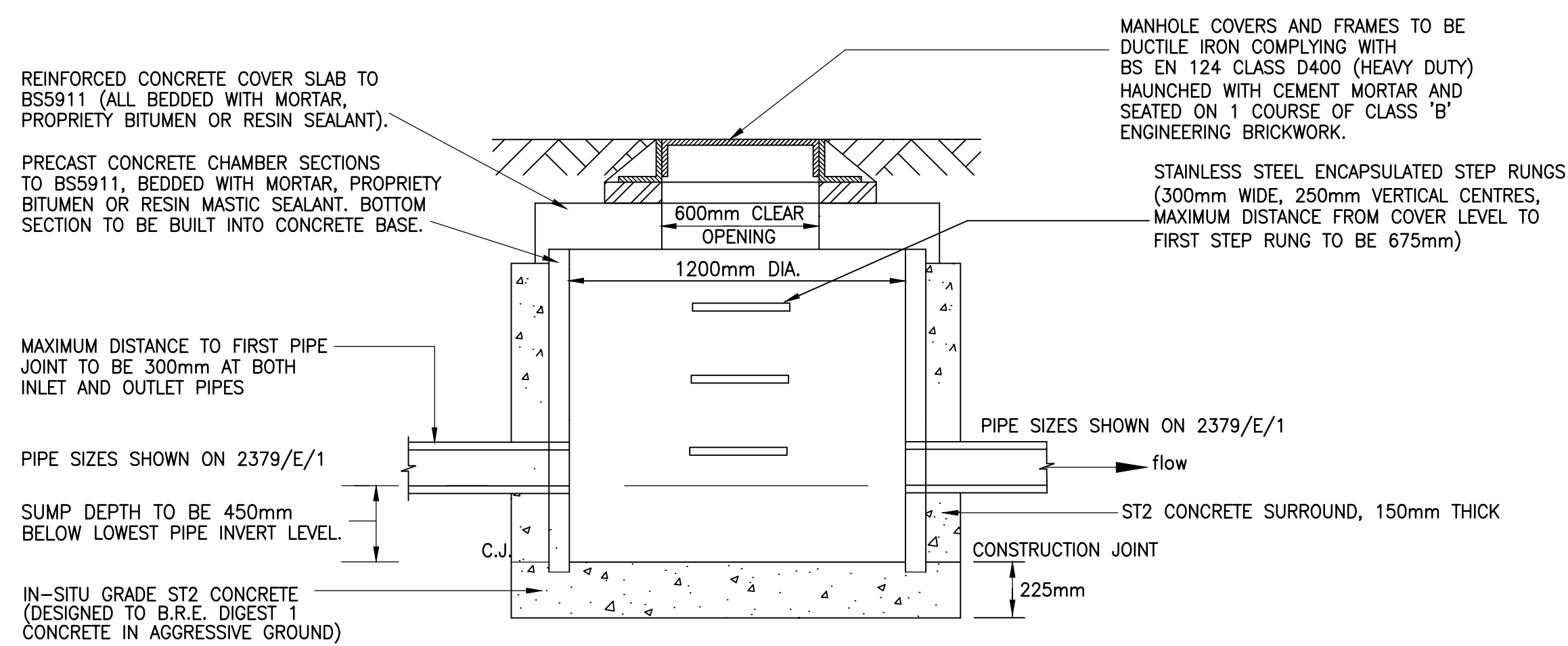


TYPICAL DETAIL
'STORMBLOC OPTIMUM' STORAGE ATTENUATION SYSTEM
Scale: NTS



9.6m LONG x 4m WIDE x 1.32m (DOUBLE LAYER) DEEP GEOCELLULAR TANKED
STORAGE UNITS BY HYDRO-INTERNATIONAL LIMITED

LAYOUT PLAN VIEW OF
'STORMBLOC OPTIMUM' STORAGE ATTENUATION SYSTEM
SCALE: NTS



TYPICAL CATCHPIT MANHOLE DETAIL
MANHOLE S1
SCALE: NTS

CATCHPIT NOTES

1. CONCRETE COVER SLAB TO BE HEAVY DUTY
2. IN-SITU CONCRETE TO BE MECHANICALLY VIBRATED
3. ALL DIMENSIONS IN MILLIMETRES UNLESS SHOWN OTHERWISE
4. ALL PIPE CONNECTIONS TO A CATCHPIT SHALL HAVE THE
SAME INVERT LEVEL UNLESS DETAILED OTHERWISE
5. COVER AND INVERT LEVELS SHOWN ON DRAINAGE LAYOUT 2379/E/1

D.J.Barton Associates CIVIL & STRUCTURAL ENGINEERING CONSULTANTS Tel: Kelvedon 01376 573247 Email: djbarton@btinternet.com		
Client DDA		
Job PROPOSED REDEVELOPMENT 9 LINKSWAY, NORTHWOOD, MIDDLESEX, HA6 2XA		
Title CATCHPIT MANHOLE AND STORAGE ATTENUATION TANK DETAILS		
Scale NTS	Drg. No. 2379/E/3	Rev.
Date MAY 2022		