

Materials Schedule – 9 Nestles

Rev P5

9 Nestles Avenue, Hayes UB3 4SA

14th July 2025

Project No.	1908
File Reference	1.7

Rev	Date	Prepared By	Checked By	Comments
P1	28.06.22	tm	DL	Initial issue for comments
P2	07.03.23	AJ	DL	Planning issue
P3	15.06.23	AJ	DL	Planning issue. Brick and window finishes revised.
P4	18.04.24	AJ	DL	Planning issue. Brick finishes revised.
P5	14.07.25	AJ	DL	Planning Issue. Balcony detail revised (page 6).

Please note the majority of the materials identified herein were approved via application ref 51175/APP/2023/1786. This application seeks only to vary the base detail proposed to the balconies. This variation is proposed to overcome problems with detail design and fixing to the reinforced concrete structure. The proposed alternative is visually very similar.

Materials already approved under application 51175/APP/2023/1786 are identified accordingly on the following pages.

Contents

Brickwork.....	3
Copings	4
Windows & Doors.....	5
Balconies.....	6
Rainwater goods.....	7
Entrance colonnade.....	8
Plant screen	9

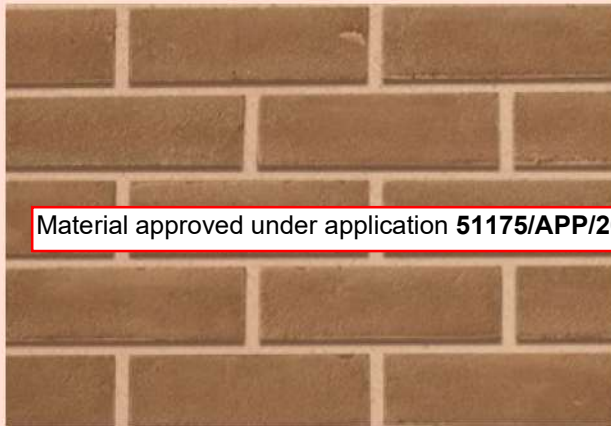
Brickwork

*Refer to Elevation drawings for brick bond types and locations.
Mortar colour – natural light grey*



Material approved under application **51175/APP/2023/1786**

Colour/Type: DR20B Buff Natural Stock Brick – 65mm
AAB Rijswaard Bricks



Material approved under application **51175/APP/2023/1786**

Colour/Type: DR40B Grey Stock Brick – 65mm
AAB Rijswaard Bricks

Copings



Colour/Type:

Classic Creations, precast concrete.
Grey, Once-Weathered coping.

Windows & Doors



Type:Windows-Smart Architectural Aluminium, Alitherm Heritage Range
Grey aluminium window
Colour Anthracite Grey RAL7016



Material approved under application **51175/APP/2023/1786**



Type:Patio/Balcony Door-Smart Architectural Aluminium, Alitherm Heritage Range

Grey aluminium 2 leaf casement door
Colour Anthracite Grey RAL7016

7016
Anthracite
Grey

Balconies



Polyester powder coated steel
frame balconies and Juliettes.
Colour RAL7016
Vertical metal railings

Previous approval. Balcony detail
approved under application
51175/APP/2023/1786
to be revised.

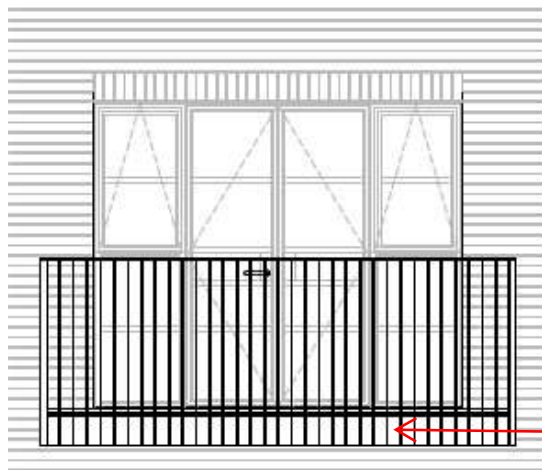


New proposal. Revised base
detail to balcony- fascia plate
with continuous railings
detail proposed for approval

7016
Anthracite
Grey

Exposed concrete soffit to balcony.

(Note: West elevation balconies to have additional acoustic mitigation measures-
Quietstone Light acoustic soffit and glazed internal screen to railings).



New proposal. Revised base
detail to balcony- fascia plate
with continuous railings
detail proposed for approval

Hopperhead & Downpipe, Rainwater Drainage



Material approved under application **51175/APP/2023/1786**



Aluminium square hopper, with square downpipe
Colour, RAL7016



Material approved under application **51175/APP/2023/1786**

7016
**Anthracite
Grey**

Balcony gutter system from underside of floor.
Square guttering, colour RAL7016.

Entrance Colonnade



Timber colonnade secured back to building façade via concealed brackets.
To entrance walkway.

Rooftop Fencing/Screening



Louvre Plant Acoustic screen
1.5m High.
Colour RAL7016.

7016
**Anthracite
Grey**