

ALL DIMENSIONS ARE APPROXIMATE & MUST BE DO NOT SCALE THIS DRAWING.  
THIS DRAWING MUST BE READ IN CONJUNCTION ASSOCIATED RELEVANT DRAWINGS & DOCUMENTATION.  
BEFORE WORKS START ON SITE CDM PARTNERSHIP MUST BE INFORMED OF ANY VARIATIONS OR DISCREPANCIES ON SITE.

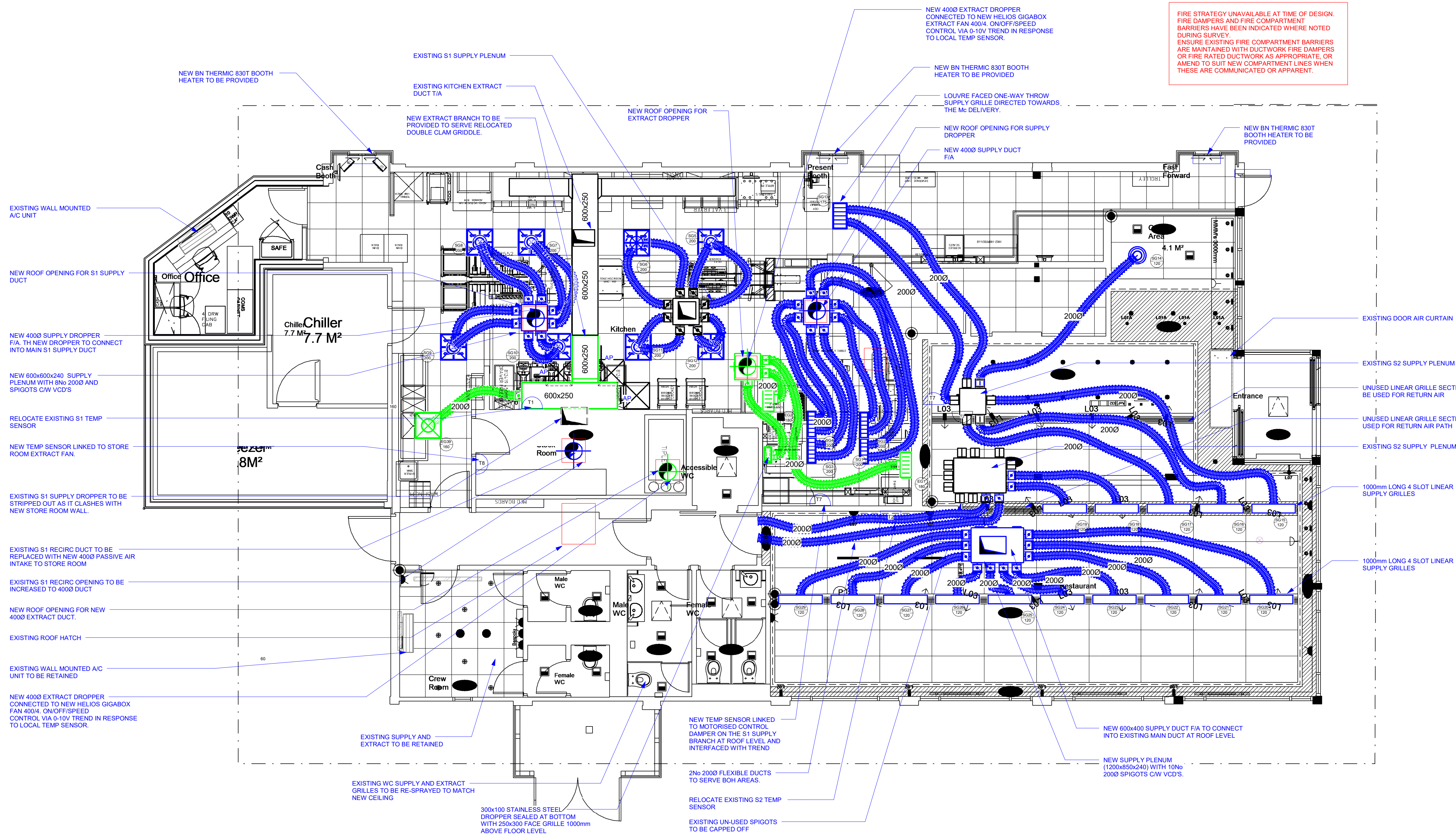
#### NOTES

1. COMPLY WITH McDONALD'S STANDARD SPECIFICATION FOR HVAC SERVICES.
2. 2" STAINLESS STEEL DRAIN TRAYS UNDER HVAC CONDENSERS APPROXIMATE TOTAL 1.20M DRAIN SOCKET & COPPER DRAIN PIPES ROUTED TO DISCHARGE OVER LOCAL GULLEY. WHERE NO GULLY HEADING IS PRESENT, FIT PIPE TRACE HEATING & INSULATION AND HIGH CAPACITY GUTTER TRACE HEATING WITHIN TRAYS NO CONTROL & CONNECTION TO ELECTRIC SUPPLY BY ELCT CONTRACTOR.
3. 1" 20MM COPPER TRAPPED AND DRAINS TO DISCHARGE OVER LOCAL GULLY. MINIMUM 100mm DROP IN 8' TRAP WATER DEPTH.
4. DUCT HEIGHTS FOR GUIDANCE ONLY. CONTRACTOR TO CHECK FOR SITE CO-ORDINATION.
5. HVAC CONTRACTOR TO VERIFY SIZES & DISTANCES OF REFRIGERATION PIPING PRIOR TO INSTALLATION.
6. 1.6M INSULATED SUPPLY & EXTRACT DUCTWORK.
7. 1" FIT MITO THROUGH ROOF/SLD OPPOSING FLANGE PLATE TO SHAWDOX PARTITIONS TO FLANGED FRAME TYPE FIRE DAMPERS (OR DEMONSTRATE COMPLIANCE WITH MANUFACTURERS SPECIFIC FITTING INSTRUCTIONS).
8. 1" FIT 100MM EXCESS TO RETURN AIR TRANSFER GRILLES.
9. MAINTAIN EXISTING FIRE COMPARTMENTATION BARRIERS. 1500MM CLEARING ACCESS PROVIDED TO ALL DUCT CLEANING ACCESS PANELS.

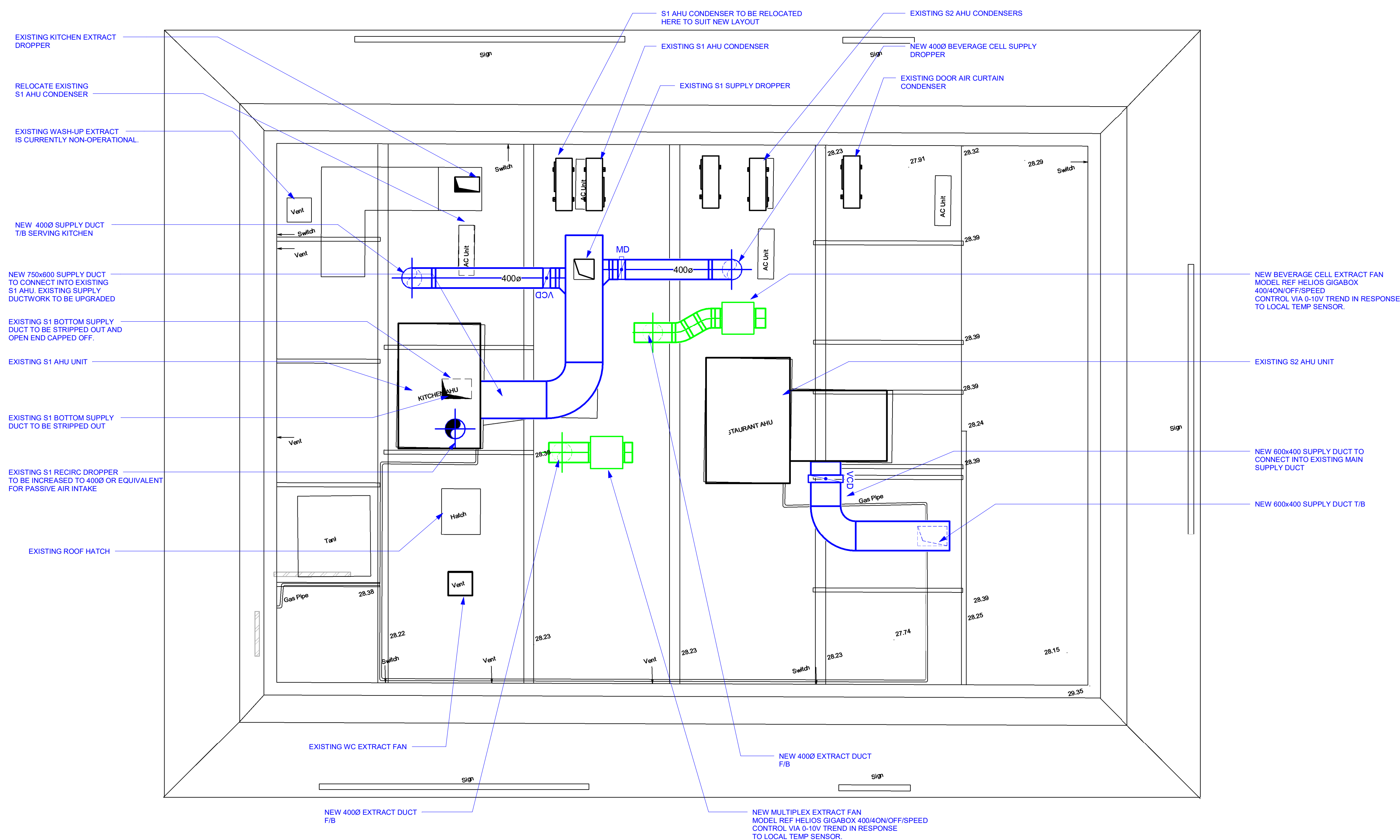
GRILLE SCHEDULE - Peggy Bedford Uxbridge								
REF	LOCATION	l/s	NOM SIZE mm	SPIGOT Dia	MAKE	MODEL	COLOUR	COMMENT
<b>SUPPLY GRILLES</b>								
SG1	Beverage Cell	200	600 x 150	200	HVC	LGO-6-12-5-D-31F	White	2x 200dia spigots
SG2	Beverage Cell	200	600 x 150	200	HVC	LGO-6-12-5-D-31F	White	2x 200dia spigots
SG3	Beverage Cell	200	600 x 150	200	HVC	LGO-6-12-5-D-31F	White	2x 200dia spigots
SG4	Beverage Cell	200	600 x 150	200	HVC	LGO-6-12-5-D-31F	White	2x 200dia spigots
SG5	Kitchen	200	600 x 600	300	Konvekta	SKP	White	
SG6	Kitchen	200	600 x 600	300	Konvekta	SKP	White	
SG7	Kitchen	200	600 x 600	300	Konvekta	SKP	White	
SG8	Kitchen	200	600 x 600	300	Konvekta	SKP	White	
SG9	Kitchen	200	600 x 600	300	Konvekta	SKP	White	
SG10	Kitchen	200	600 x 600	300	Konvekta	SKP	White	
SG11	Kitchen	200	600 x 600	300	Konvekta	SKP	White	
SG12	Kitchen	200	600 x 600	300	Konvekta	SKP	White	
SG13	Booth	180	600x300	200	HVC	CD	White	Louvre face grille, 1 way blow, 2x200dia spigots
SG14	Modelivery	150	300 dia	200	Scottaire	0630	As ceiling	To be provided with 250dia adapter connection
SG15	Lobby	120	1000x172	200	HVC	LSD	As ceiling	4 slot linear diffuser c/w plenum
SG16	Lobby	120	1000x172	200	HVC	LSD	As ceiling	4 slot linear diffuser c/w plenum
SG17	Lobby	120	1000x172	200	HVC	LSD	As ceiling	4 slot linear diffuser c/w plenum
SG18	Lobby	120	1000x172	200	HVC	LSD	As ceiling	4 slot linear diffuser c/w plenum
SG19	Lobby	120	1000x172	200	HVC	LSD	As ceiling	4 slot linear diffuser c/w plenum
SG20	Lobby	120	1000x172	200	HVC	LSD	As ceiling	4 slot linear diffuser c/w plenum
SG21	Lobby	120	1000x172	200	HVC	LSD	As ceiling	4 slot linear diffuser c/w plenum
SG22	Lobby	120	1000x172	200	HVC	LSD	As ceiling	4 slot linear diffuser c/w plenum
SG23	Lobby	120	1000x172	200	HVC	LSD	As ceiling	4 slot linear diffuser c/w plenum
SG24	Lobby	120	1000x172	200	HVC	LSD	As ceiling	4 slot linear diffuser c/w plenum
SG25	Lobby	120	1000x172	200	HVC	LSD	As ceiling	4 slot linear diffuser c/w plenum
SG26	Lobby	120	1000x172	200	HVC	LSD	As ceiling	4 slot linear diffuser c/w plenum
SG27	Lobby	120	1000x172	200	HVC	LSD	As ceiling	4 slot linear diffuser c/w plenum
SG28	Lobby	120	1000x172	200	HVC	LSD	As ceiling	4 slot linear diffuser c/w plenum
SG29	Lobby	120	1000x172	200	HVC	LSD	As ceiling	4 slot linear diffuser c/w plenum

GRILLE SCHEDULE - Peggy Bedford Uxbridge								
REF	LOCATION	l/s	NOM SIZE mm	SPIGOT Dia	MAKE	MODEL	COLOUR	COMMENT
<b>EXTRACT GRILLES</b>								
EG1	Beverage cell	180	600 x 200	250	HVC	LGO-6-20	White	Linear Bar
EG2	Beverage cell	180	600 x 200	250	HVC	LGO-6-20	White	Linear Bar
EG3	Wash-up	160	600 x 200	200	HVC	LGO-6-20	White	Linear Bar

FIRE STRATEGY UNAVAILABLE AT TIME OF DESIGN.  
FIRE DAMPERS AND FIRE COMPARTMENT BARRIERS HAVE BEEN INDICATED WHERE NOTED DURING SURVEY.  
ENSURE EXISTING FIRE COMPARTMENT BARRIERS ARE MAINTAINED WITH DUCTWORK FIRE DAMPERS OR FIRE RATED DUCTWORK AS APPROPRIATE, OR AIGNED TO SUIT NEW COMPARTMENT LINES WHEN THESE ARE COMMUNICATED OR APPARENT



1 Ground Floor  
1 : 50



2 Roof  
1 : 50

#### BASE DRAWINGS

6459\_AEW\_0701\_0001F PROPOSED REFLECTED CEILING PLAN  
P115502015-0014-Peggy Bedford Uxbridge Plan  
DN-11240 0701 PEGGY BEDFORD-GBR-RLX REV B K1

#### AMENDMENTS

REF	DATE	DESCRIPTION
-----	------	-------------



10A ALBION STREET, DUNSTABLE, BEDS  
LN6 1SB | 01582 472457 Fax : 01582 472458  
Email : office@cdmpartnership.co.uk

#### PROJECT

McDONALD'S RESTAURANT  
PEGGY BEDFORD UXBRIDGE  
#701

#### TITLE

GROUND FLOOR HVAC  
LAYOUT

#### DATE

30/04/2024

#### SCALE

1 : 50

#### DRWN

MM

#### CHKD

9686 M 1001