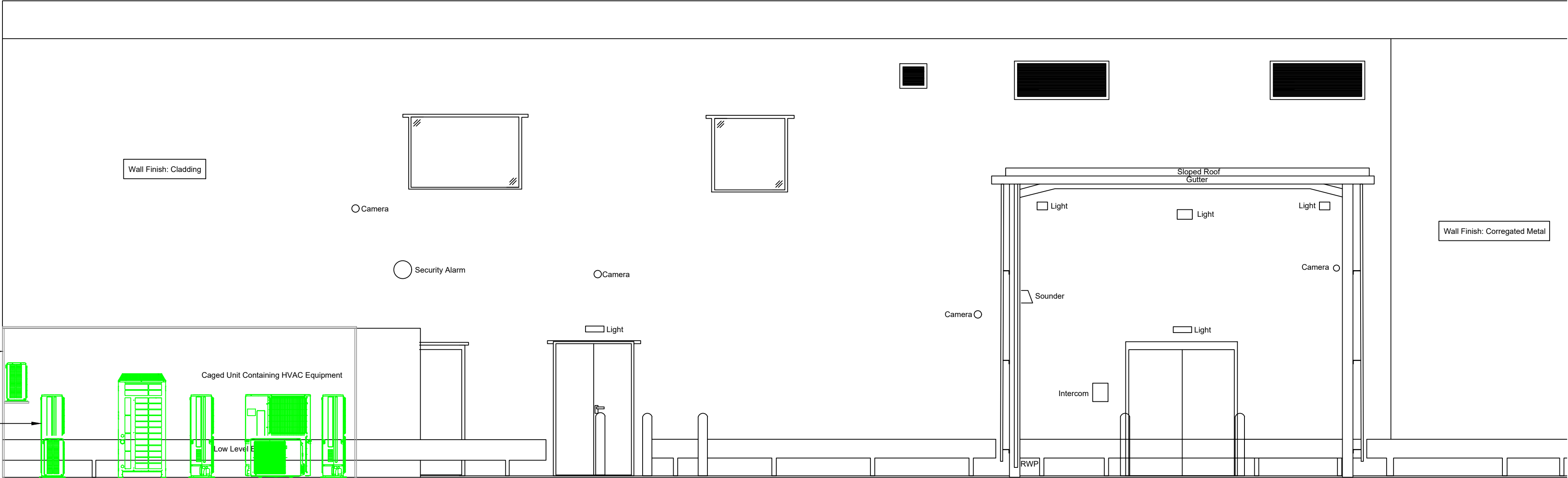


EXISTING PALLISADE FENCING SHALL BE AMENDED TO INCORPORATE ALL NEW MECHANICAL PLANT ITEMS WITH EXISTING ENCLOSURE LID BEING REMOVED TO FACILITATE DUCTWORK INSTALLATION.

ALL EXISTING MEUK EXTERNAL CONDENSERS SHALL BE ISOLATED, DEGASSED, DISCONNECTED AND STRIPPED OUT INCLUDING ALL ASSOCIATED INTENAL UNITS, DX PIPEWORK, CONDENSATE AND BRACKETRY.



ELEVATION B-B

EXISTING ELEVATION

NEW 200x150 TOILET EXTRACT LOUVRE COMPLETE WITH BIRD GUARD.

NEW 600x600 SUPPLY & EXTRACT DUCTWORK EACH TRANSFORMS TO 1000x350 PRIOR TO PENETRATION INTO EXTERNAL BUILDING FABRIC.

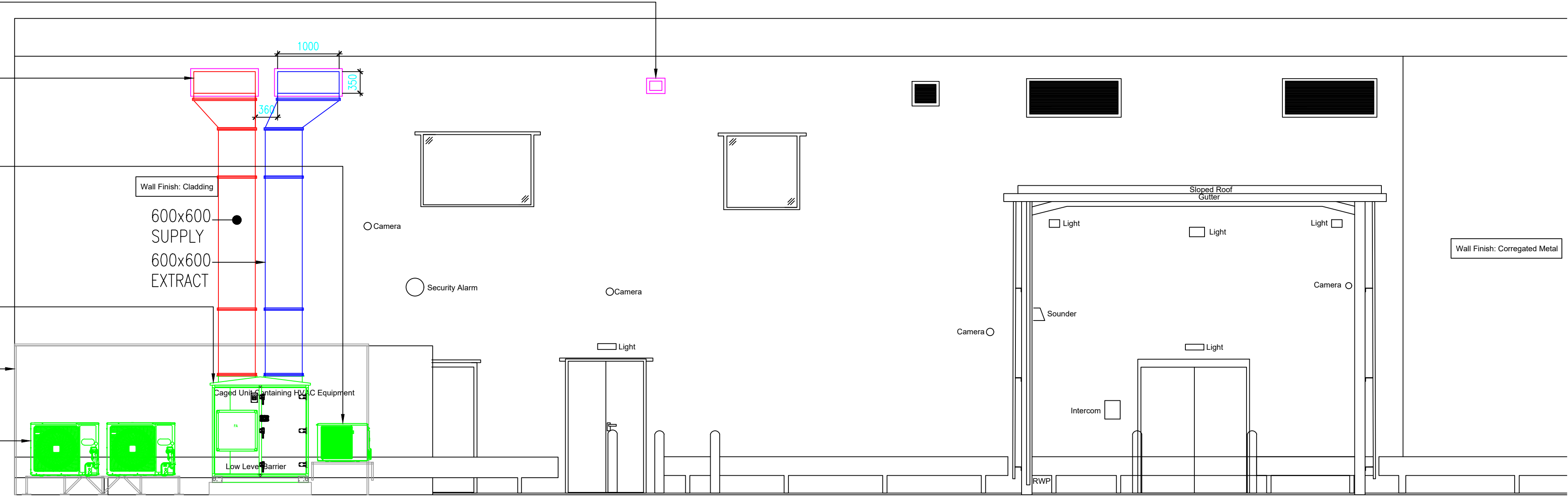
1No DAIKIN RZAG35A9 SINGLE SPLIT R32 1PH CONDENSER LOCATED AT GROUND FLOOR WITHIN SERVICES COMPOUND. EACH EXTERNAL CONDENSER SHALL BE COMPLETE WITH DRIP TRAY AND CONTROLLED VIA THE NEW BMS SYSTEM. THIS EXTERNAL CONDENSER SHALL BE WALL MOUNTED ON CANTILEVER BRACKETRY. EXISTING FENCE ENCLOSURE SHALL BE RETAINED.

SOVEREIGN AIR MOVEMENT HEAT RECOVERY AHU COMPLETE WITH THERMAL WHEEL.

EXISTING PALLISADE FENCING SHALL BE AMENDED TO INCORPORATE ALL NEW MECHANICAL PLANT ITEMS AS INDICATED WITH EXISTING ENCLOSURE LID BEING REMOVED TO FACILITATE DUCTWORK INSTALLATION.

2No DAIKIN RZA250D TWIN SPLIT R32 3PH CONDENSERS AND 1No DAIKIN RZAG35A9 SINGLE SPLIT R32 1PH CONDENSER LOCATED AT GROUND FLOOR WITHIN SERVICES COMPOUND. EACH EXTERNAL CONDENSER SHALL BE COMPLETE WITH DRIP TRAY AND CONTROLLED VIA THE NEW BMS SYSTEM. ALL EXTERNAL CONDENSERS SHALL BE MOUNTED ON INDIVIDUAL, SUITABLY SIZED 'BIGFOOT' SUPPLEMENTARY SUPPORT SYSTEMS. EXISTING FENCE ENCLOSURE SHALL BE RETAINED.

3No DAIKIN RZA200D TRIPLE SPLIT R32 3PH CONDENSERS, ALSO LOCATED AT GROUND FLOOR WITHIN SERVICES COMPOUND, ORIENTATED 90° BEHIND THE 2NO RZA250D CONDENSERS INDICATED. EACH EXTERNAL CONDENSER SHALL BE COMPLETE WITH DRIP TRAY AND CONTROLLED VIA THE NEW BMS SYSTEM. ALL EXTERNAL CONDENSERS SHALL BE MOUNTED ON INDIVIDUAL, SUITABLY SIZED 'BIGFOOT' SUPPLEMENTARY SUPPORT SYSTEMS. EXISTING FENCE ENCLOSURE SHALL BE RETAINED.



ELEVATION B-B

PROPOSED ELEVATION

1. INSTALLATION TO COMPLY WITH THE CURRENT UK PLANNING AND DEVELOPMENT REGULATIONS 2018.
2. MECHANICAL CONTRACTOR SHALL ALLOW FOR A NEW STANDARD TREND BMS CONTROL PANEL AND SHALL BE COMPLETE WITH:  
  
STORE TRADING POWER  
FIRE ALARM INTEGRATION & PLANT SHUT DOWN  
LIGHTING 2 STAGE OPERATION AND EMERGENCY  
OUTSIDE LIGHT DAY LIGHT SENSOR.  
CONTROL OF AC SYSTEMS, ASSOCIATED CONDENSERS, AHU, OVERDOOR HEATER AND LOCAL EXTRACT FANS.  
  
ALL PLANT AND CONTROLS TO COMPLY WITH THE CURRENT UK PLANNING AND DEVELOPMENT REGULATIONS 2018.
3. THE MECHANICAL CONTRACTOR SHALL PLACE THE ORDER FOR THE DAIKIN EQUIPMENT, AS PER THEIR QUOTATION REF PRO-56884 CURRYS HAYES, QUOTATION REF TBA AND SUBSEQUENT CONTRACTOR DISCOUNT, CONTACT DAMIEN PHILLIPS 07810 502824.
4. THE MECHANICAL CONTRACTOR SHALL PLACE THE ORDER FOR THE HEAT RECOVERY AHU AS PER DRAWING REF S3934-01-AHU SUPPLIED BY SOVEREIGN AIR MOVEMENT LTD, UNIT B, NATIONAL COURT, FOX WAY, OFF ATKINSON STREET, LEEDS, WEST YORKSHIRE, LS10 1PS.
5. 2 HOUR FIRE DAMPERS SHALL BE AS MANUFACTURED BY BSB ENGINEERING LTD AND SUPPLIED BY SOVEREIGN AIR MOVEMENT LTD, UNIT B, NATIONAL COURT, FOX WAY, OFF ATKINSON STREET, LEEDS, WEST YORKSHIRE, LS10 1PS. A FACTORY INSTALLATION FRAME WILL COME WITH 400mm LONG FLEXIBLE CONNECTION NEOPRENE MATERIAL. THE FLEX MUST NOT BE TAUGHT ARE THERE SHOULD BE 250mm BETWEEN DUCT AND FIRE DAMPER AS PER DIXONS STANDARD DETAILS. CONTRACTOR TO ALLOW FOR ACCESS PANELS FOR FIRE DAMPERS DIRECTLY ADJACENT TO EACH.
6. FIRE DAMPERS IN DUCTWORK TO BE BSB MODEL FD SERIES B OR C DEPENDANT UPON DUCTWORK SHAPE AND SHALL BE FITTED WITH CLEATS FOR DRY WALL INSTALLATION. THIS SHALL BE TESTED AND ASSESSED TO INSTALLATION METHOD TO BS EN 1366-2 and BS 476-20/22 AND SHALL PROVIDE E120 CLASSIFICATION. (2.1.14)
7. ALL PENETRATIONS TO COMPARTMENT WALLS WITH SERVICES TO BE FILLED AFTER INSTALLATION WITH A PROPRIETARY FIRE RATED FOAM TESTED TO BS476 PART 20 AND CLASS B1 Din 4102 4 HOUR FIRE RESISTANCE OR 4 HOUR FIRE RATED BATT TESTED TO BS476 PART 20 AND CLASS B1 Din 4102
8. ALL DUCTWORK ON MAIN SYSTEM SHALL BE INSULATED TO CURRENT DIXONS STANDARDS AND SHALL COMPLY WITH THE NON DOMESTIC BUILDING SERVICES COMPLIANCE GUIDE FOR ENGLAND.
9. ALL VENTILATION SYSTEMS SHALL BE COMMISSIONED IN ACCORDANCE WITH CIBSE CODE A.
10. ALL BUILDING SERVICES SYSTEMS SHALL BE CHECKED, WITNESSED AND COMMISSIONED TO ENSURE OPTIMUM ENERGY EFFICIENCY.
11. THE CONTRACTOR SHALL ALLOW FOR THE CONDENSATE FROM THE CONDENSERS TO DRAIN VIA DRIP TRAY ONTO EXISTING SOAKAWAY METHODOLOGY. IF THIS IS NOT PERMISSABLE, ADEQUATE ABOVE GROUND DRAINAGE CONNECTIONS MUST BE TAKEN TO A LOCALISED BUILDERS DRAIN CONNECTION.
12. REFRIDGERANT PIPEWORK PASSING THROUGH FIRE WALLS SHALL HAVE FIRE SLEEVE PROTECTION, AS PER THE RATING OF THE WALL.
13. ALL EXISTING SPLIT DX AC SYSTEMS SHALL BE ISOLATED DEGASSED AND STRIPPED OUT AND REMOVED BY OTHERS.
14. CURRYS IT NETWORK CABLE SHALL BE CONNECTED BETWEEN COMMS CAB AND NEW BMS PANEL.

REV.	DATE	AMENDMENT
<div><div><div></div></div><div>WPL</div></div> <div>WPL Consulting LLP</div> <div>1 Airport West Lancaster Way Leeds LS19 7ZA</div> <div>Tel: 0113 202 9444 Fax: 0113 202 9333</div> <div>E-mail: mail@wplconsulting.co.uk</div>		
PROJECT TITLE		
CURRYS HAYES UNIT 3 LOMBARDY RETAIL PARK UB33EX		
DRAWING TITLE		
EXISTING & PROPOSED ELEVATIONS		
PROJECT No: 9666	DRAWING No: M5502	REVISION:
SCALE: 1:50 @ A1	DATE: MAR '23	DRAWN BY: CJH
CHECKED BY:		DATE: