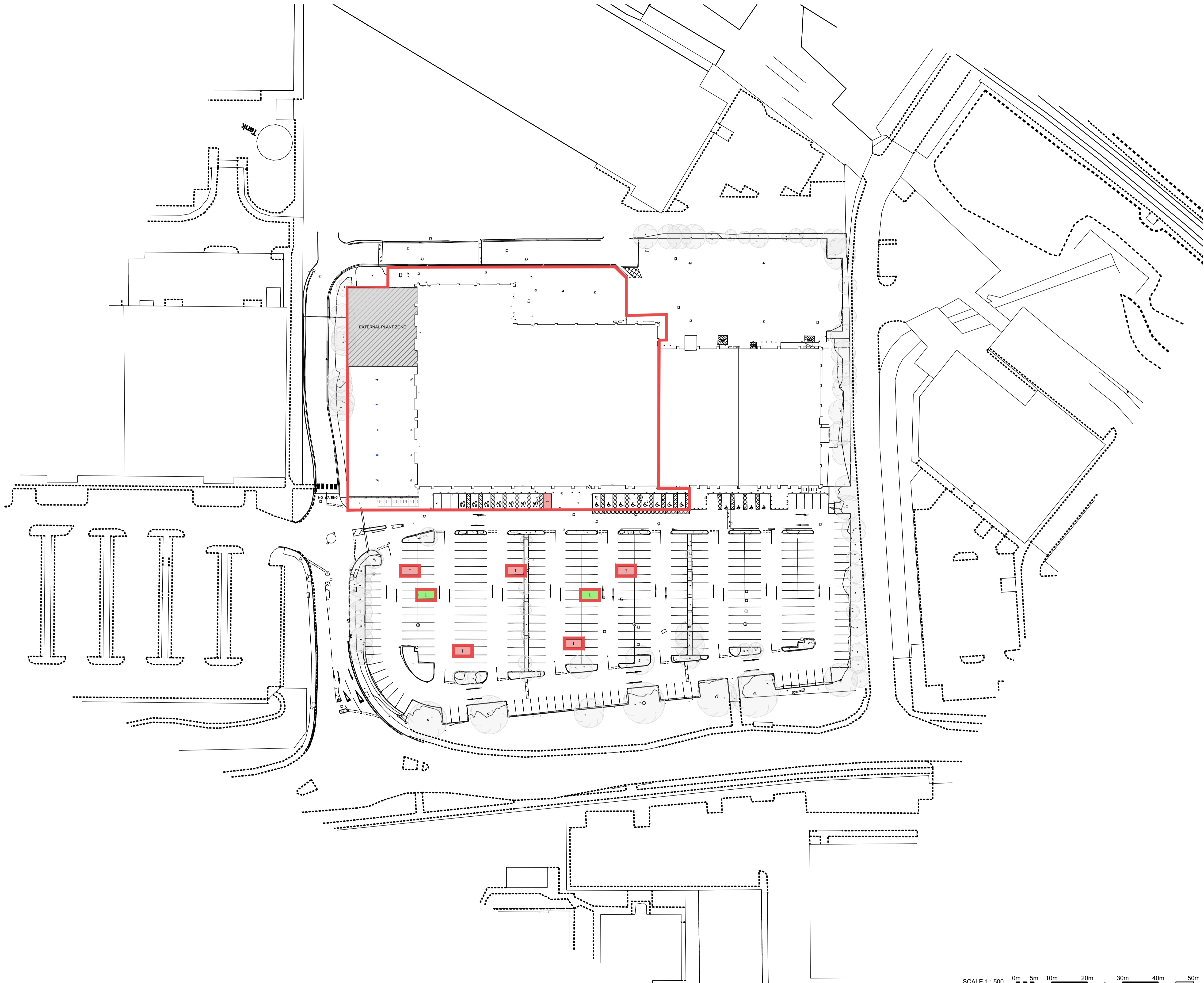
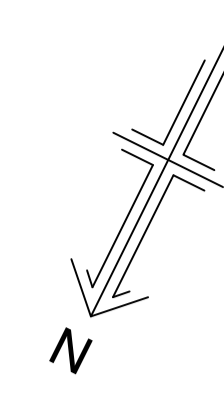


THIS DRAWING IS COPYRIGHT OF BROOKERFLYNN ARCHITECTS LTD AND MAY NOT BE REPRODUCED IN ANY FORM NOR TRANSFERRED TO OTHER PARTIES BY ELECTRONIC MEANS WITHOUT PRIOR WRITTEN CONSENT. NO DIMENSIONS TO BE SCALED FROM THIS DRAWING.

- DENOTES APPLICATION BOUNDARY
- T EXISTING TROLLEY BAY REMOVED
- T PROPOSED TROLLEY BAY



| PO3 | 29/10/25 | Updated to Comments | SS | SS |
|-----|----------|------------------------|-------|---------|
| PO2 | 17/10/25 | Red Line Updated | SS | SS |
| PO1 | 25/09/25 | Revised to comments | TH | SS |
| PO0 | 12/09/25 | First Issue of Drawing | TH | SS |
| REV | DATE | DESCRIPTION | DRAWN | CHECKED |

M&S
EST. 1884

STORE NAME
M&S
COUNTRY
UK
PROJECT
M&S SOUTH RUISLIP

DRAWING
**PROPOSED
SITE PLAN**

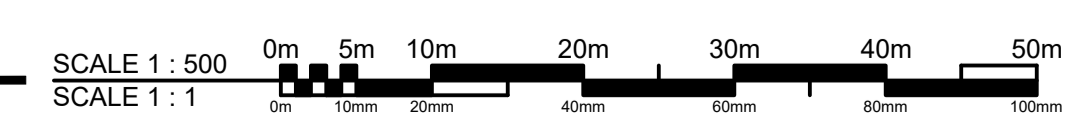
CONSULTANT
BROOKERFLYNN ARCHITECTS
DISCIPLINE DESCRIPTION
ARCHITECT
CONSULTANT LOGO

BROOKERFLYNN
architects

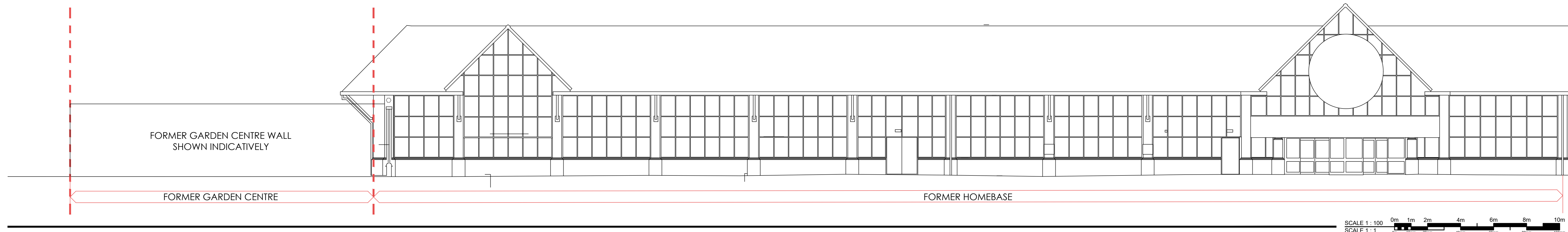
| SCALE | PAPER SIZE | DATE | DRAWN | CHECKED |
|-------|------------|---------|-------|---------|
| 1:500 | A1 | SEP '25 | TH | SS |

| STORE NUMBER | PROJECT No | DISCIPLINE CODE | DRAWING No |
|--------------|------------|-----------------|------------|
| 0000 | RUI000 | A | 08902 |

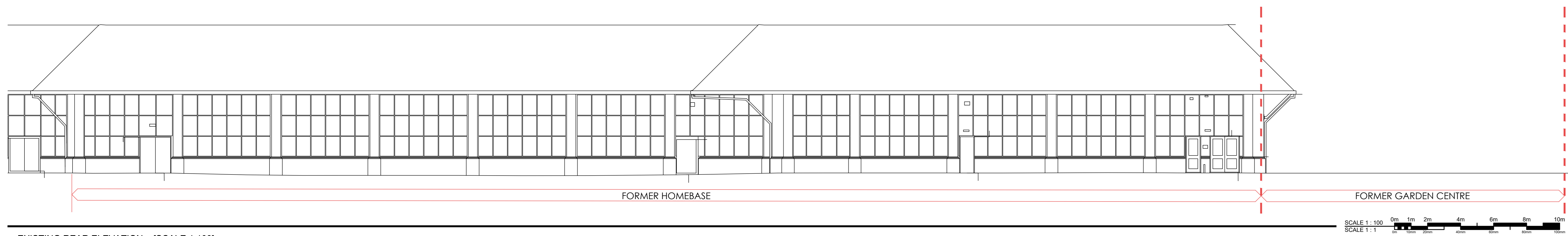
| CONSULTANT PROJECT No | STATUS | REVISION |
|-----------------------|--------|----------|
| 24.1036 | P | 03 |



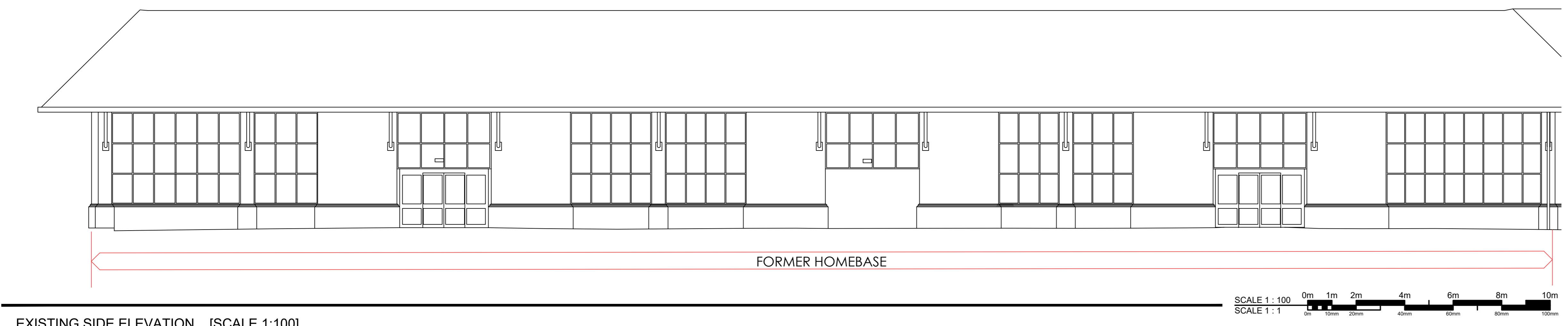
PLANNING



EXISTING FRONT ELEVATION _ [SCALE 1:100]



EXISTING REAR ELEVATION _ [SCALE 1:100]



EXISTING SIDE ELEVATION _ [SCALE 1:100]

| REV | DATE | DESCRIPTION | DRAWN | CHECKED |
|-----|----------|------------------------|-------|---------|
| 01 | 25/09/25 | Update to Comments | TH | SS |
| 02 | 17/09/25 | Drawing Released | TH | SS |
| 03 | 10/09/25 | Final Issue of Drawing | TH | SS |

M&S
EST. 1884

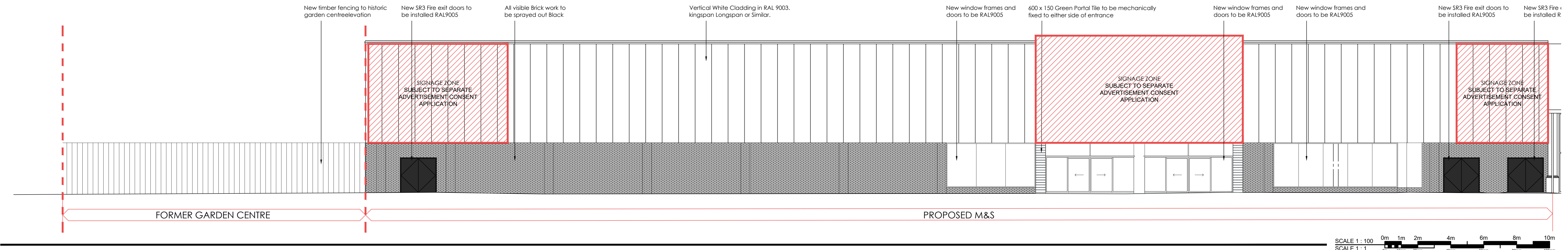
CLIENT NAME
M&S
COUNTRY
UK
PROJECT
M&S SOUTH RUISLIP

DRAWING
EXISTING EXTERNAL ELEVATIONS

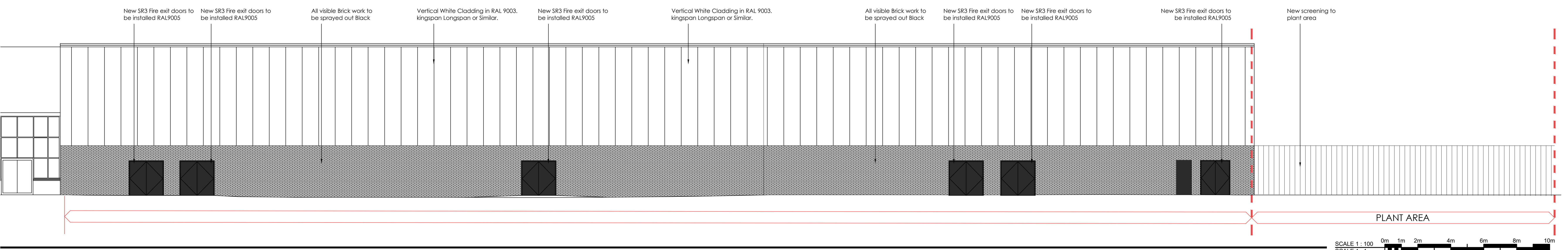
CONSULTANT
BROOKERFLYNN ARCHITECTS
DISCIPLINE DESCRIPTION
ARCHITECT
CONSULTANT LOGO

PLANNING **BROOKERFLYNN**
architects

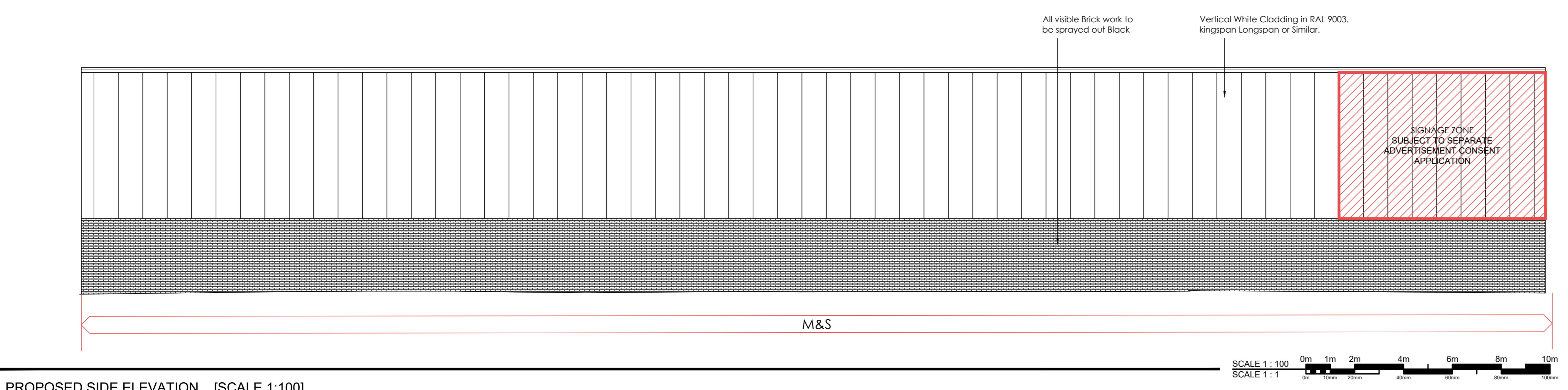
| SCALE | PAPER SIZE | DATE | DRAWN | CHECKED |
|-----------------------|------------|-----------------|------------|---------|
| 1:100 | A0 | SEP '25 | TH | SS |
| STORE NUMBER | PROJECT No | DISCIPLINE CODE | DRAWING No | |
| 0000 | RUI000 | A | 08903 | |
| CONSULTANT PROJECT No | STATUS | | REVISION | |
| 24.1036 | P | | 02 | |



PROPOSED FRONT ELEVATION _ [SCALE 1:100]



PROPOSED REAR ELEVATION _ [SCALE 1:100]



PROPOSED SIDE ELEVATION _ [SCALE 1:100]

| REV | DATE | DESCRIPTION | DRAWN | CHECKED |
|--------|------|------------------------|-------|---------|
| REV 01 | 2025 | Update to Comments | SS | SS |
| REV 02 | 2025 | Drawing Resubmit | SS | SS |
| REV 03 | 2025 | Final Issue of Drawing | TH | SS |

M&S
EST. 1884

CLIENT NAME
M&S
COUNTRY
UK
PROJECT
M&S SOUTH RUISLIP

DRAWING
PROPOSED EXTERNAL ELEVATIONS

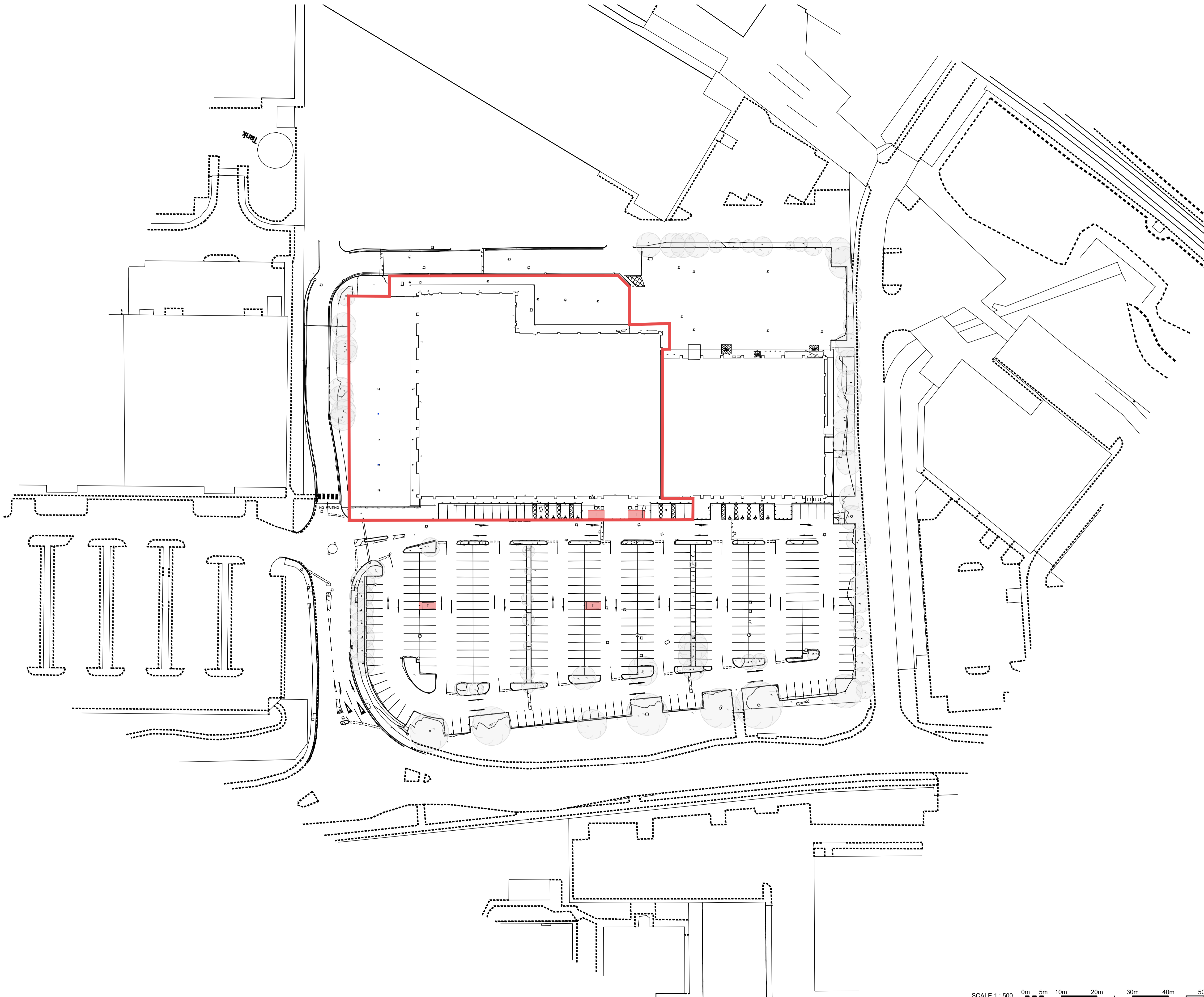
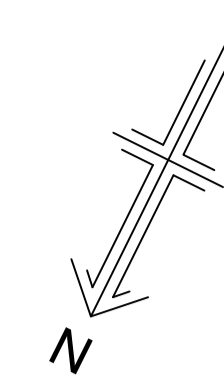
CONSULTANT
BROOKERFLYNN ARCHITECTS
DISCIPLINE DESCRIPTION
ARCHITECT
CONSULTANT LOGO

PLANNING **BROOKERFLYNN architects**

| SCALE | PAPER SIZE | DATE | DRAWN | CHECKED |
|-----------------------|------------|-----------------|------------|---------|
| 1:100 | A0 | SEP '25 | TH | SS |
| STORE NUMBER | PROJECT No | DISCIPLINE CODE | DRAWING No | |
| 0000 | RUI000 | A | 08904 | |
| CONSULTANT PROJECT No | STATUS | REVISION | | |
| 24.1036 | P | 02 | | |

THIS DRAWING IS COPYRIGHT OF BROOKERFLYNN ARCHITECTS LTD AND MAY NOT BE REPRODUCED IN ANY FORM NOR TRANSFERRED TO OTHER PARTIES BY ELECTRONIC MEANS WITHOUT PRIOR WRITTEN CONSENT. NO DIMENSIONS TO BE SCALED FROM THIS DRAWING.

— DENOTES APPLICATION BOUNDARY



| | | | | |
|-----|----------|------------------------|-------|---------|
| PO2 | 29/10/25 | Updated to Comments | SS | SS |
| PO1 | 17/10/25 | Drawing Released | SS | SS |
| PO0 | 12/09/25 | First Issue of Drawing | TH | SS |
| REV | DATE | DESCRIPTION | DRAWN | CHECKED |

M&S
EST. 1884

STORE NAME
M&S

COUNTRY
UK

PROJECT
M&S SOUTH RUISLIP

DRAWING
**EXISTING
SITE PLAN**

CONSULTANT
BROOKERFLYNN ARCHITECTS

DISCIPLINE DESCRIPTION
ARCHITECT

CONSULTANT LOGO

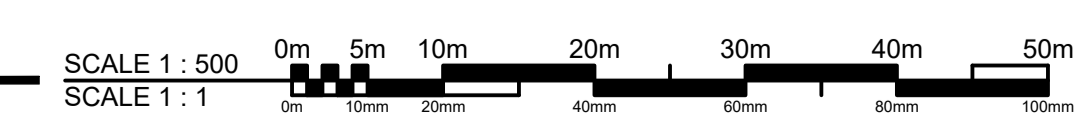


| | | | | |
|-------|------------|---------|-------|---------|
| SCALE | PAPER SIZE | DATE | DRAWN | CHECKED |
| 1:500 | A1 | SEP '25 | TH | SS |

| | | | |
|--------------|------------|-----------------|------------|
| STORE NUMBER | PROJECT No | DISCIPLINE CODE | DRAWING No |
| 0000 | RUI000 | A | 08906 |

| | | |
|-----------------------|--------|----------|
| CONSULTANT PROJECT No | STATUS | REVISION |
| 24.1036 | P | 02 |

FEASIBILITY



THIS DRAWING IS COPYRIGHT OF BROOKERFLYNN ARCHITECTS LTD AND MAY NOT BE REPRODUCED IN ANY FORM NOR TRANSFERRED TO OTHER PARTIES BY ELECTRONIC MEANS WITHOUT PRIOR WRITTEN CONSENT. NO DIMENSIONS TO BE SCALED FROM THIS DRAWING.

LAYOUT BASED ON M&S FOODHALL BLUEPRINTS

--- DENOTES UNIT BOUNDARY

● (ESTATE TOTEM) DENOTES EXISTING ESTATE TOTEM

| | | | | |
|-----|----------|------------------------|-------|---------|
| FOO | 25/08/25 | First Issue of Drawing | TH | SS |
| REV | DATE | DESCRIPTION | DRAWN | CHECKED |

M&S
EST. 1884

STORE NAME
M&S
COUNTRY
UK
PROJECT
M&S SOUTH RUISLIP

DRAWING
**PROPOSED
SITE PLAN
WITH SIDE CAR PARK**

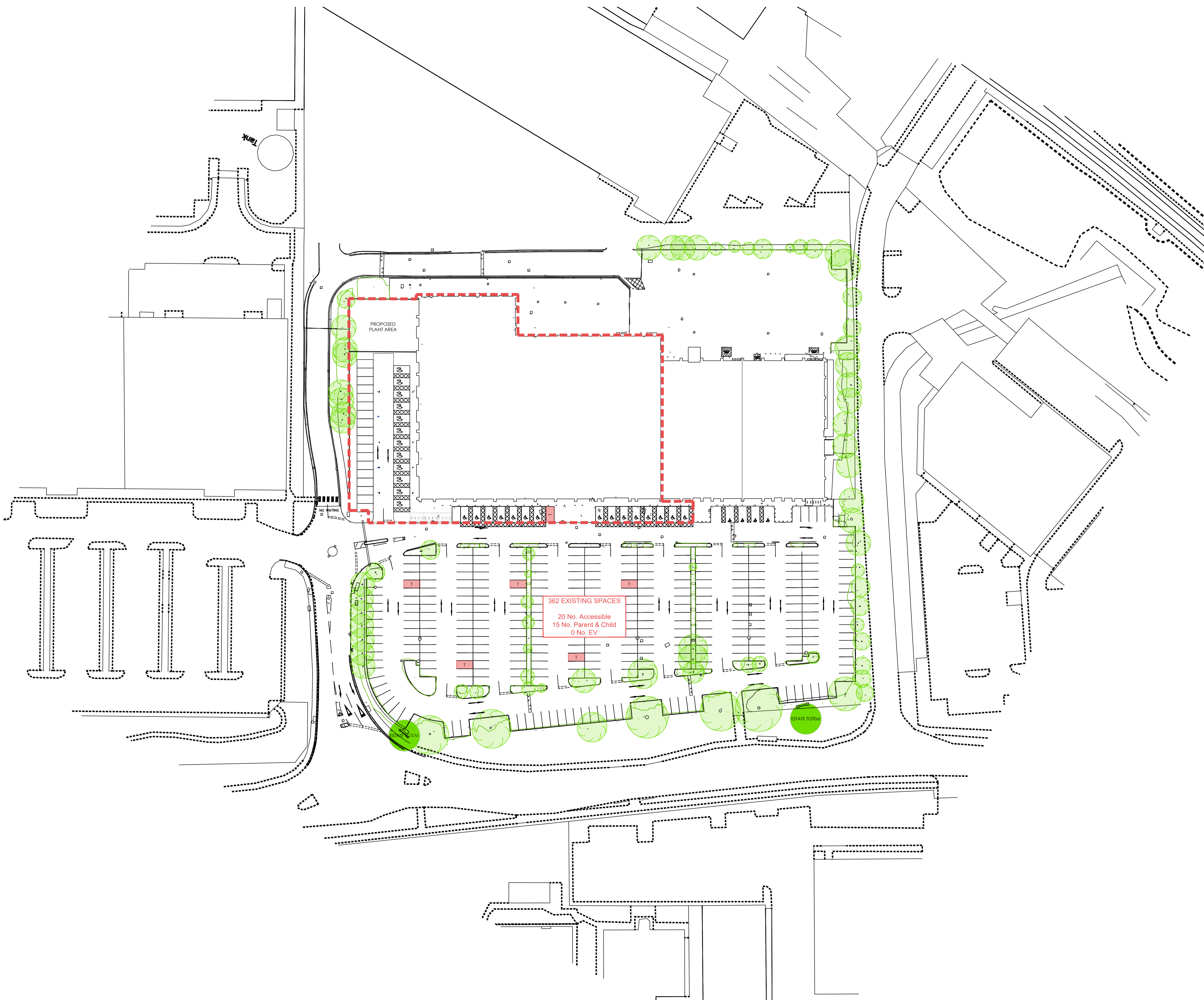
CONSULTANT
BROOKERFLYNN ARCHITECTS
DISCIPLINE DESCRIPTION
ARCHITECT
CONSULTANT LOGO

BROOKERFLYNN
architects

| | | | | |
|-------|------------|---------|-------|---------|
| SCALE | PAPER SIZE | DATE | DRAWN | CHECKED |
| 1:500 | A1 | SEP '25 | TH | SS |

| | | | |
|--------------|------------|-----------------|------------|
| STORE NUMBER | PROJECT No | DISCIPLINE CODE | DRAWING No |
| 0000 | RUI000 | A | 08907 |

| | | |
|-----------------------|--------|----------|
| CONSULTANT PROJECT No | STATUS | REVISION |
| 24.1036 | F | 00 |



FEASIBILITY