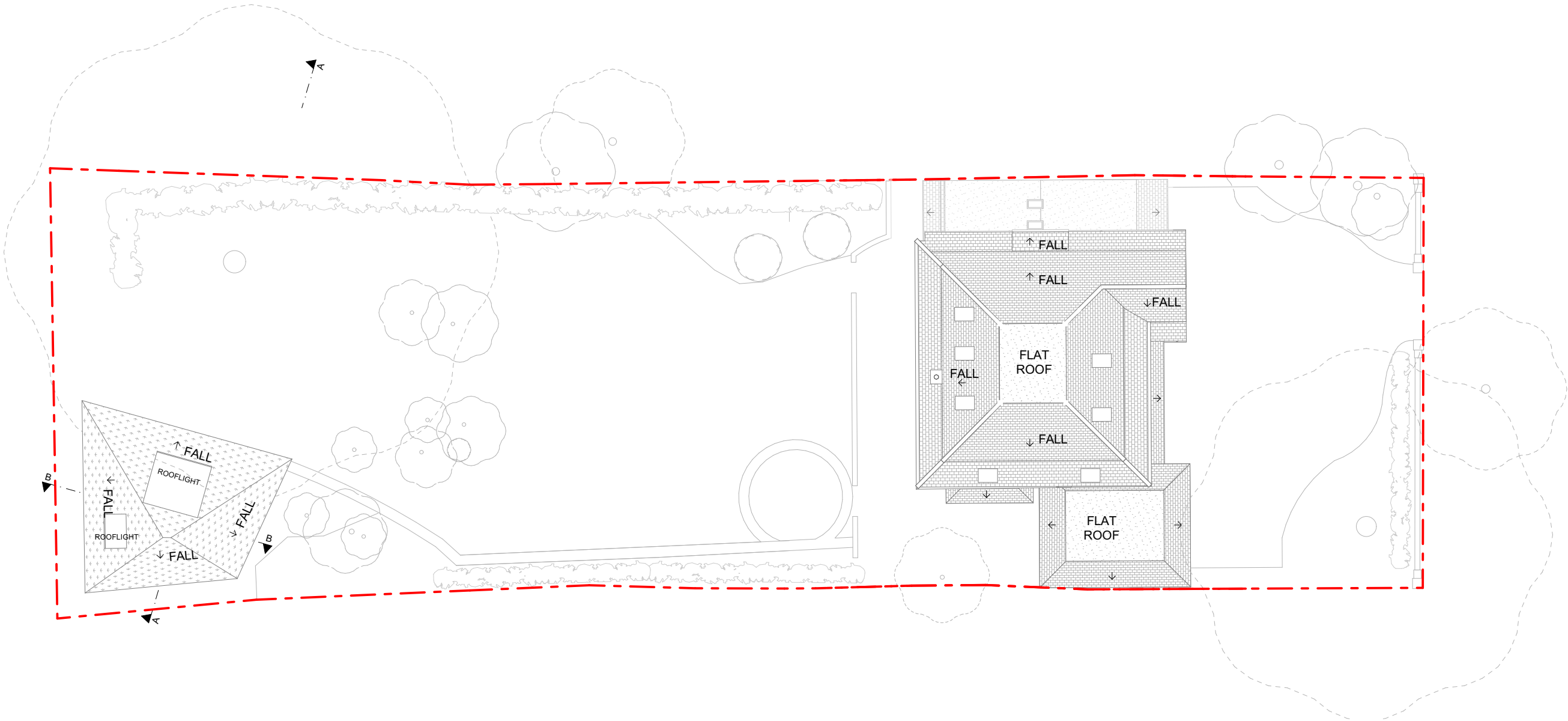


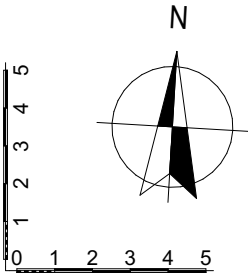


All dimensions to be checked on site. DO NOT SCALE FROM DRAWING.
Discrepancies ambiguities and/or omissions between this drawing and
information given elsewhere must be reported to the Architect immediately
before proceeding.THIS DRAWING IS COPYRIGHT.

Revision	Description	Date
P1	Revised drawings for Planning	02/2023



GH (0) 09 Site Plan as Proposed 1:200



Scale: 1:200 @ A3 Date: February/2023 Drawing Status: Planning
Rev: P1 Drawn By: MS Drawing Number: GH (0) 09

Project Title: 37 St Martins Approach, Ruislip HA4 7QH
Drawing Title: Site Plan as Proposed

GK Architects Limited | London Office
Niddry Lodge | 51 Holland Street | London W8 7JB
T: 0203 280 3630 E: office@gkarchitects.co.uk
GK Architects Limited | Durham Office
Clavering House | Clavering Place | Newcastle upon Tyne NE1 3NG
T: 0191 666 0196 E: office@gkarchitects.co.uk
RIBA Chartered Practice www.gkarchitects.co.uk

