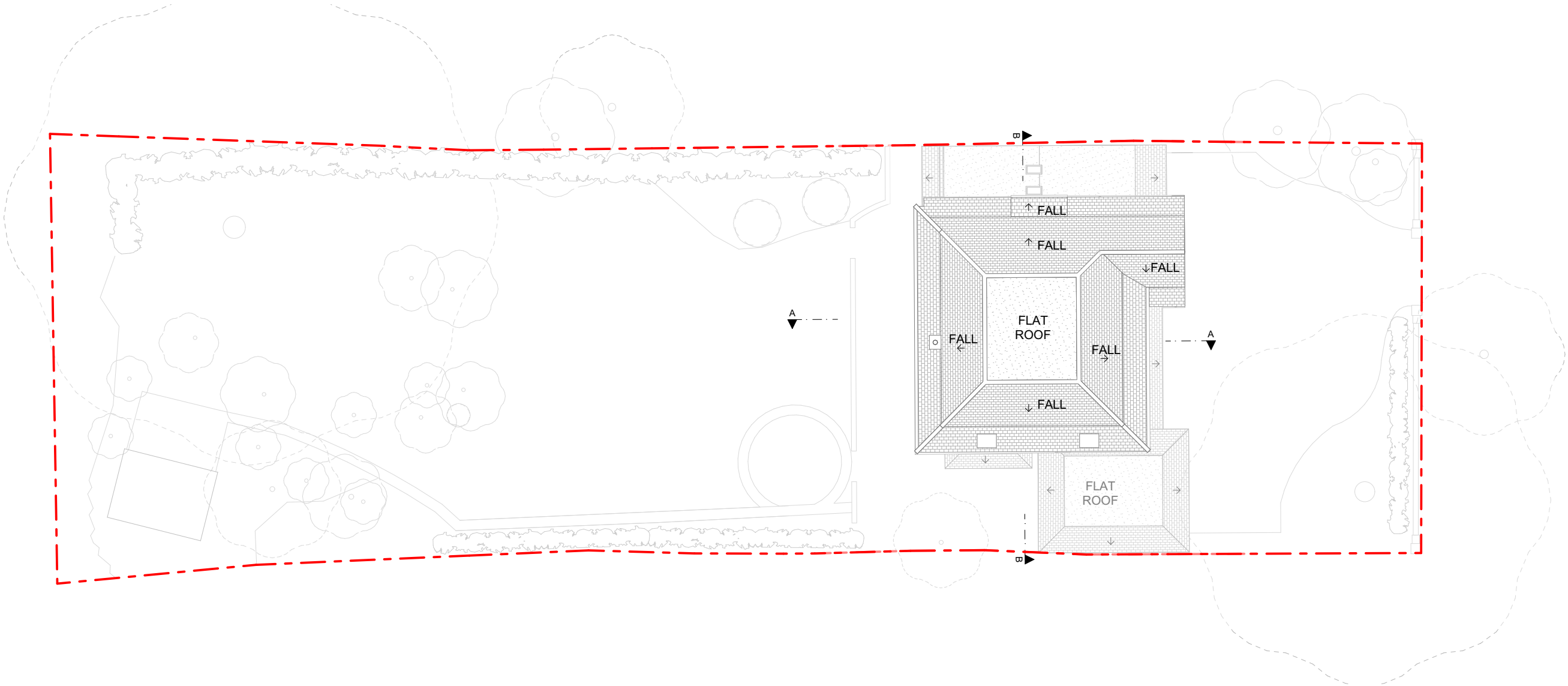




All dimensions to be checked on site. DO NOT SCALE FROM DRAWING.  
Discrepancies ambiguities and/or omissions between this drawing and  
information given elsewhere must be reported to the Architect immediately  
before proceeding. THIS DRAWING IS COPYRIGHT.

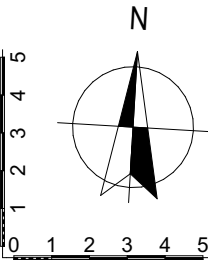
Revision	Description	Date



E (0) 09

Site Plan as Existing

1:200



Scale: 1:200 @ A3  
Date: September/2022  
Drawing Status: Planning  
Rev: MS  
Drawing Number: E (0) 09

Project Title:  
37 St Martins Approach,  
Ruislip HA4 7QH  
Drawing Title:  
Site Plan as Existing

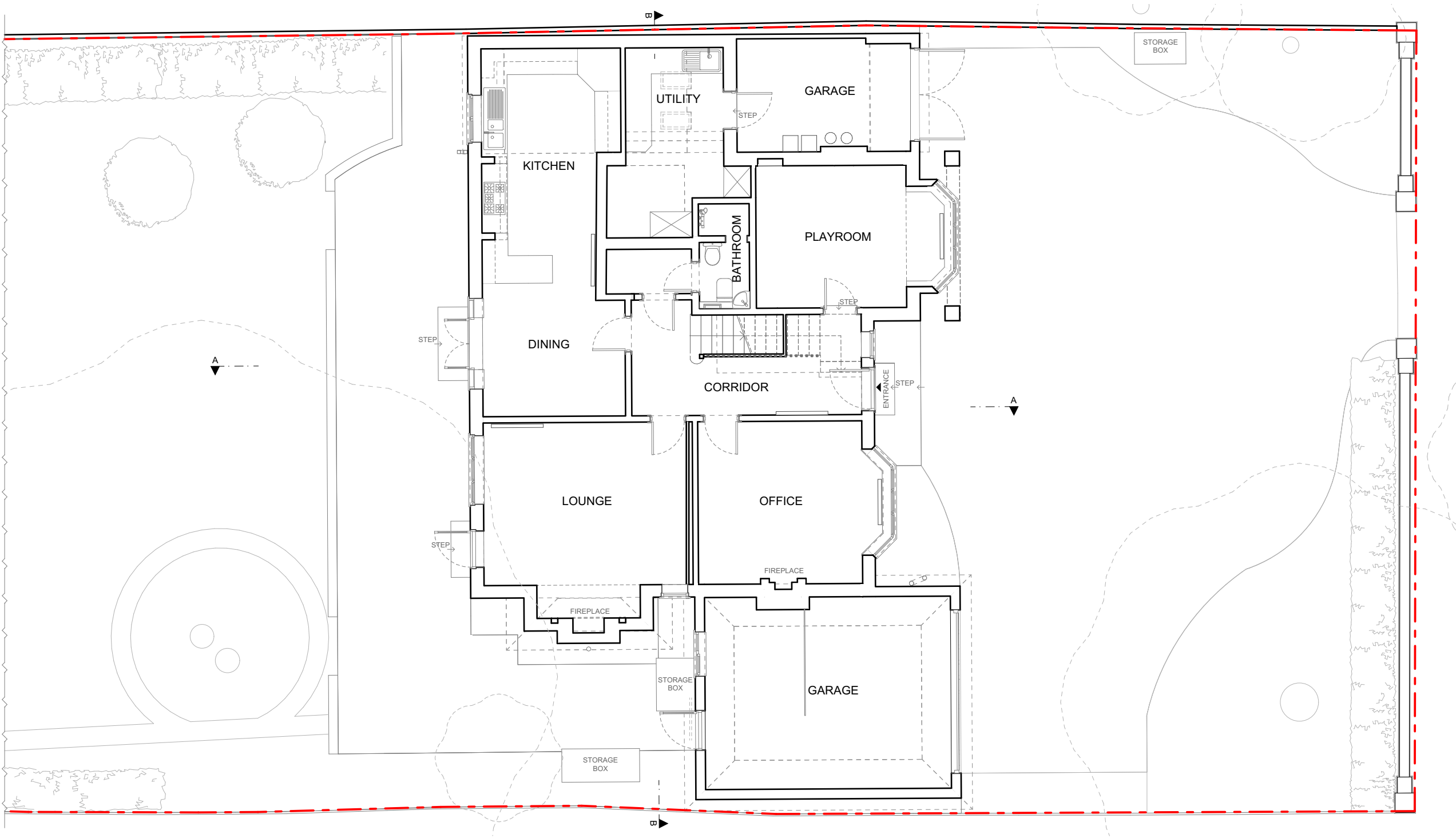
GK Architects Limited | London Office  
Niddry Lodge | 51 Holland Street | London W8 7JB  
T: 0203 280 3630 E: office@gkarchitects.co.uk  
GK Architects Limited | Durham Office  
Clavering House | Clavering Place | Newcastle upon Tyne NE1 3NG  
T: 0191 666 0196 E: office@gkarchitects.co.uk  
RIBA Chartered Practice  
www.gkarchitects.co.uk





All dimensions to be checked on site. DO NOT SCALE FROM DRAWING. Discrepancies ambiguities and/or omissions between this drawing and information given elsewhere must be reported to the Architect immediately before proceeding. THIS DRAWING IS COPYRIGHT.

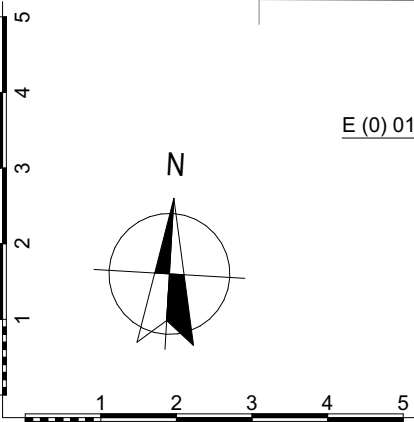
Revision	Description	Date



E (0) 01

Ground Floor Plan as Existing

1:100



Scale: 1:100 @ A3  
Date: September/2022  
Drawing Status: Planning  
Rev: MS  
Drawing Number: E (0) 01

Project Title: 37 St Martins Approach, Ruislip HA4 7QH  
Drawing Title: Ground Floor Plan as Existing

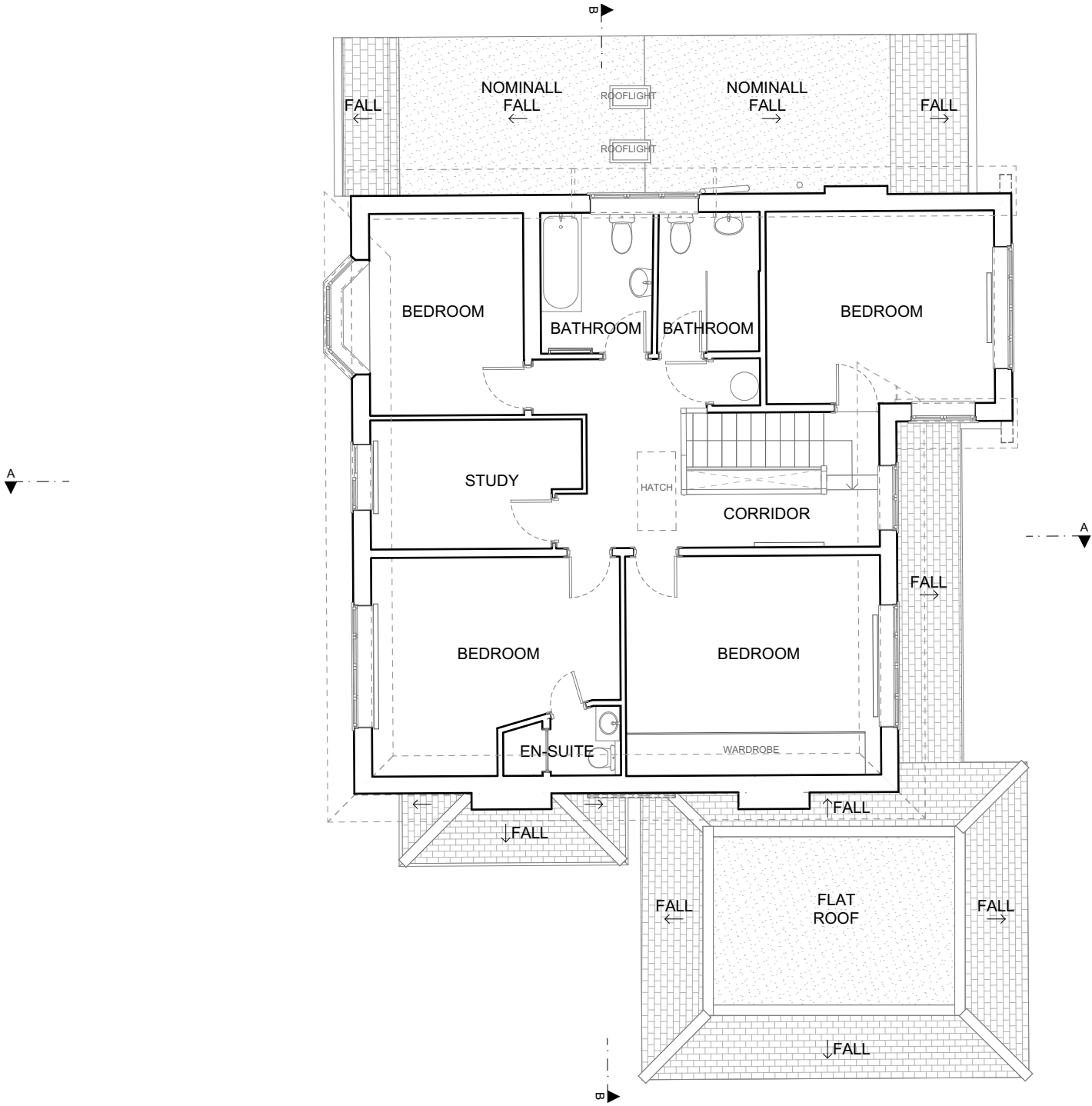
GK Architects Limited | London Office  
Niddry Lodge | 51 Holland Street | London W8 7JB  
T: 0203 280 3630 E: office@gkarchitects.co.uk  
GK Architects Limited | Durham Office  
Clavering House | Clavering Place | Newcastle upon Tyne NE1 3NG  
T: 0191 666 0196 E: office@gkarchitects.co.uk  
RIBA Chartered Practice www.gkarchitects.co.uk





All dimensions to be checked on site. DO NOT SCALE FROM DRAWING. Discrepancies ambiguities and/or omissions between this drawing and information given elsewhere must be reported to the Architect immediately before proceeding. THIS DRAWING IS COPYRIGHT.

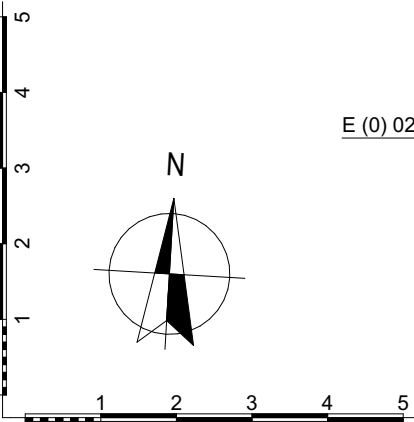
Revision	Description	Date



E (0) 02

E (0) 02 First Floor Plan as Existing

1:100



Scale: 1:100 @ A3	Date: September/2022	Drawing Status: Planning	Project Title: 37 St Martins Approach, Ruislip HA4 7QH
Rev:	Drawn By: MS	Drawing Number: E (0) 02	Drawing Title: First Floor Plan as Existing

**GK Architects Limited | London Office**  
Niddry Lodge | 51 Holland Street | London W8 7JB  
T: 0203 280 3630 E: office@gkarchitects.co.uk

**GK Architects Limited | Durham Office**  
Clavering House | Clavering Place | Newcastle upon Tyne NE1 3NG  
T: 0191 666 0196 E: office@gkarchitects.co.uk

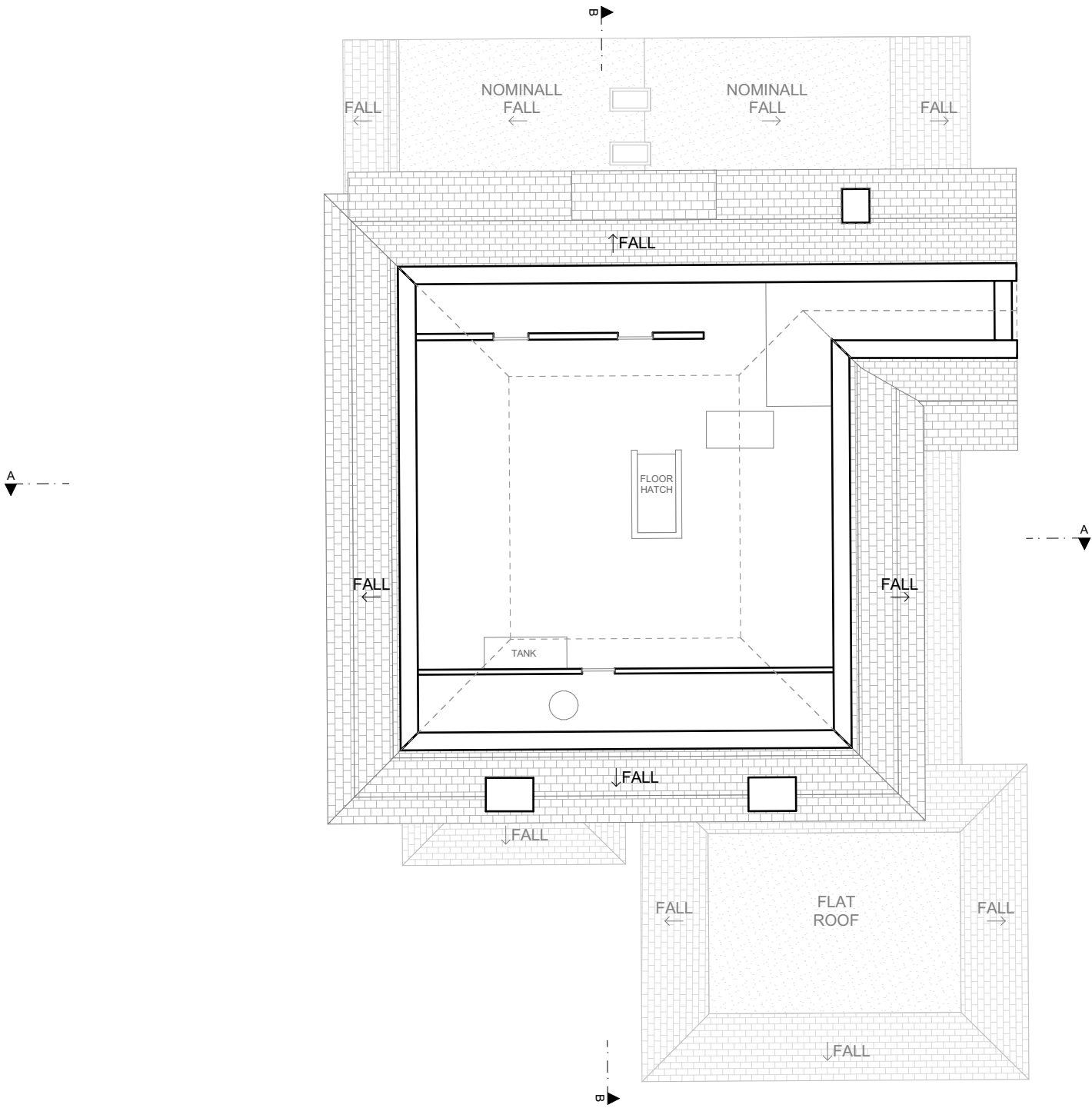
RIBA Chartered Practice [www.gkarchitects.co.uk](http://www.gkarchitects.co.uk)





All dimensions to be checked on site. DO NOT SCALE FROM DRAWING.  
Discrepancies ambiguities and/or omissions between this drawing and  
information given elsewhere must be reported to the Architect immediately  
before proceeding.THIS DRAWING IS COPYRIGHT.

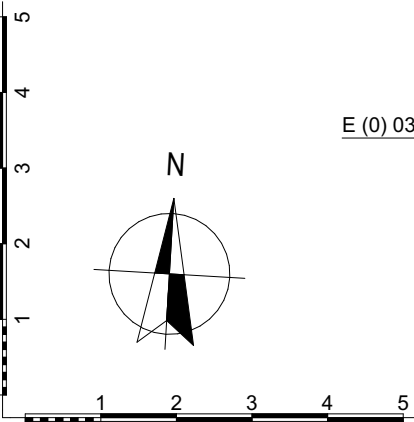
Revision	Description	Date



E (0) 03

Loft Plan as Existing

1:100



Scale: 1:100 @ A3  
Date: September/2022  
Drawing Status: Planning  
Rev: MS  
Drawn By: MS  
Drawing Number: E (0) 03

Project Title:  
37 St Martins Approach,  
Ruislip HA4 7QH  
Drawing Title:  
Loft Plan as Existing

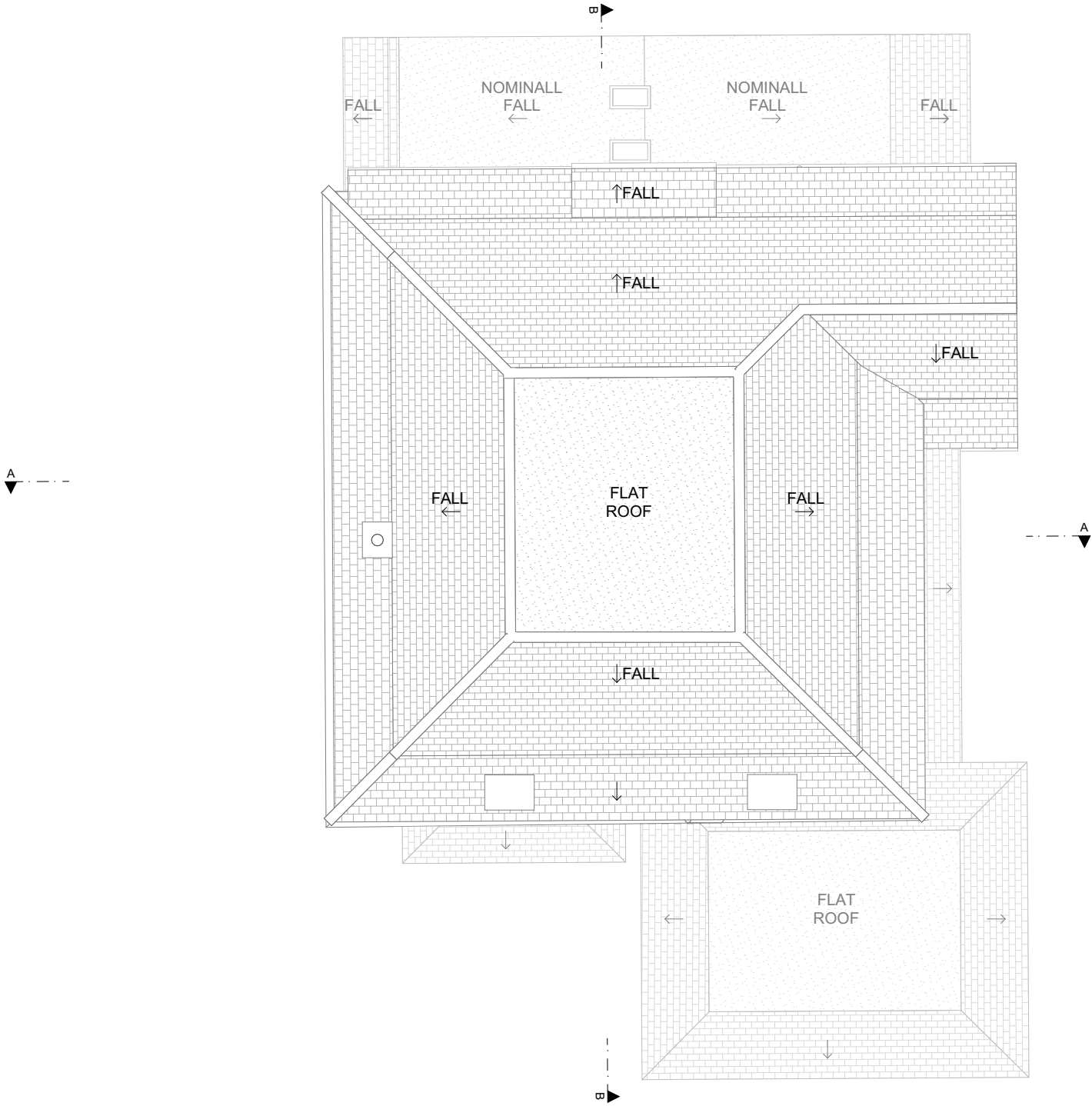
GK Architects Limited | London Office  
Niddry Lodge | 51 Holland Street | London W8 7JB  
T: 0203 280 3630 E: office@gkarchitects.co.uk  
GK Architects Limited | Durham Office  
Clavering House | Clavering Place | Newcastle upon Tyne NE1 3NG  
T: 0191 666 0196 E: office@gkarchitects.co.uk  
RIBA Chartered Practice  
www.gkarchitects.co.uk





All dimensions to be checked on site. DO NOT SCALE FROM DRAWING. Discrepancies ambiguities and/or omissions between this drawing and information given elsewhere must be reported to the Architect immediately before proceeding.THIS DRAWING IS COPYRIGHT.

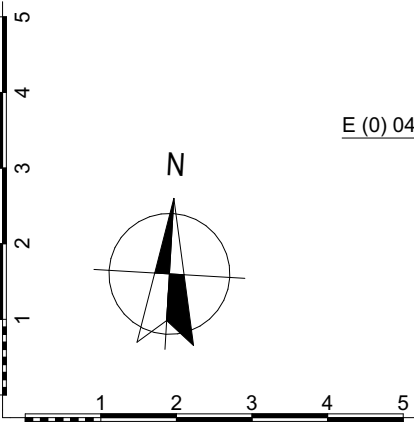
Revision	Description	Date



E (0) 04

Roof Plan as Existing

1:100



Scale: 1:100 @ A3  
Date: September/2022  
Drawing Status: Planning  
Rev: MS  
Drawing Number: E (0) 04

Project Title: 37 St Martins Approach, Ruislip HA4 7QH  
Drawing Title: Roof Plan as Existing

GK Architects Limited | London Office  
Niddry Lodge | 51 Holland Street | London W8 7JB  
T: 0203 280 3630 E: office@gkarchitects.co.uk  
GK Architects Limited | Durham Office  
Clavering House | Clavering Place | Newcastle upon Tyne NE1 3NG  
T: 0191 666 0196 E: office@gkarchitects.co.uk  
RIBA Chartered Practice www.gkarchitects.co.uk



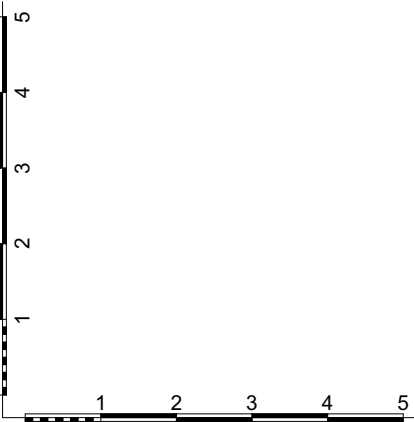


All dimensions to be checked on site. DO NOT SCALE FROM DRAWING.  
Discrepancies ambiguities and/or omissions between this drawing and  
information given elsewhere must be reported to the Architect immediately  
before proceeding.THIS DRAWING IS COPYRIGHT.

Revision	Description	Date



E (0) 10 Cross Section A-A as Existing 1:100



Scale: 1:100 @ A3 Date: September/2022 Drawing Status: Planning  
Rev: Drawn By: MS Drawing Number: E (0) 10

Project Title: 37 St Martins Approach, Ruislip HA4 7QH  
Drawing Title: Cross Section A-A as Existing

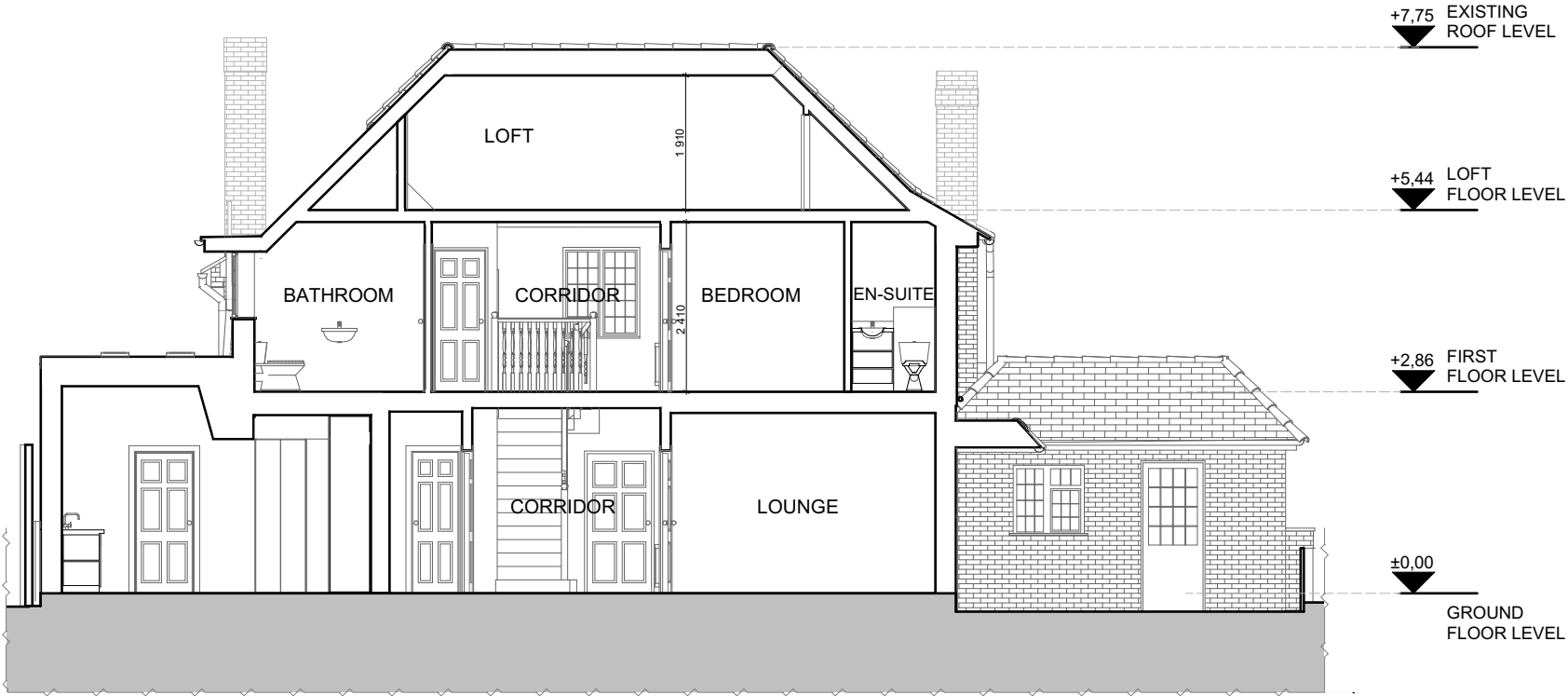
GK Architects Limited | London Office  
Niddry Lodge | 51 Holland Street | London W8 7JB  
T: 0203 280 3630 E: office@gkarchitects.co.uk  
GK Architects Limited | Durham Office  
Clavering House | Clavering Place | Newcastle upon Tyne NE1 3NG  
T: 0191 666 0196 E: office@gkarchitects.co.uk  
RIBA Chartered Practice www.gkarchitects.co.uk





All dimensions to be checked on site. DO NOT SCALE FROM DRAWING.  
Discrepancies ambiguities and/or omissions between this drawing and  
information given elsewhere must be reported to the Architect immediately  
before proceeding.THIS DRAWING IS COPYRIGHT.

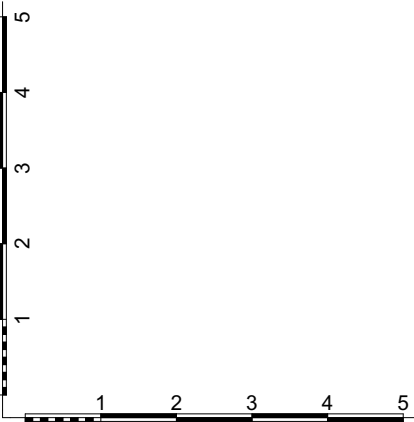
Revision	Description	Date



E (0) 11

Cross Section A-A as Existing

1:100



Scale:	Date:	Drawing Status:	Project Title:
1:100 @ A3	September/2022	Planning	37 St Martins Approach, Ruislip HA4 7QH
Rev:	Drawn By:	Drawing Number:	Drawing Title:
	MS	E (0) 11	Cross Section B-B a Existing

**GK Architects Limited | London Office**  
Niddry Lodge | 51 Holland Street | London W8 7JB  
T: 0203 280 3630 E: office@gkarchitects.co.uk

**GK Architects Limited | Durham Office**  
Clavering House | Clavering Place | Newcastle upon Tyne NE1 3NG  
T: 0191 666 0196 E: office@gkarchitects.co.uk

RIBA Chartered Practice [www.gkarchitects.co.uk](http://www.gkarchitects.co.uk)





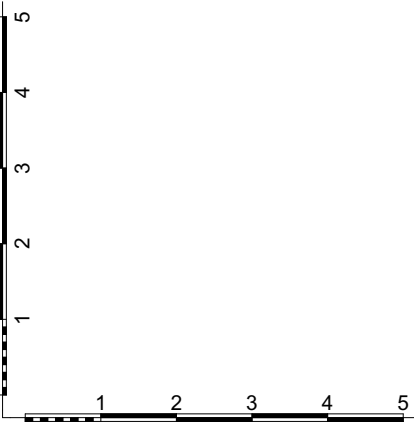


All dimensions to be checked on site. DO NOT SCALE FROM DRAWING.  
Discrepancies ambiguities and/or omissions between this drawing and  
information given elsewhere must be reported to the Architect immediately  
before proceeding.THIS DRAWING IS COPYRIGHT.

Revision	Description	Date



E (0) 20 Cross Section A-A as Existing 1:100



Scale:	Date:	Drawing Status:	Project Title:
1:100 @ A3	September/2022	Planning	37 St Martins Approach, Ruislip HA4 7QH
Rev:	Drawn By:	Drawing Number:	Drawing Title:
	MS	E (0) 20	Front Elevation as Existing

**GK Architects Limited | London Office**  
Nidry Lodge | 51 Holland Street | London W8 7JB  
T: 0203 280 3630 E: office@gkarchitects.co.uk

**GK Architects Limited | Durham Office**  
Clavering House | Clavering Place | Newcastle upon Tyne NE1 3NG  
T: 0191 666 0196 E: office@gkarchitects.co.uk

RIBA Chartered Practice [www.gkarchitects.co.uk](http://www.gkarchitects.co.uk)

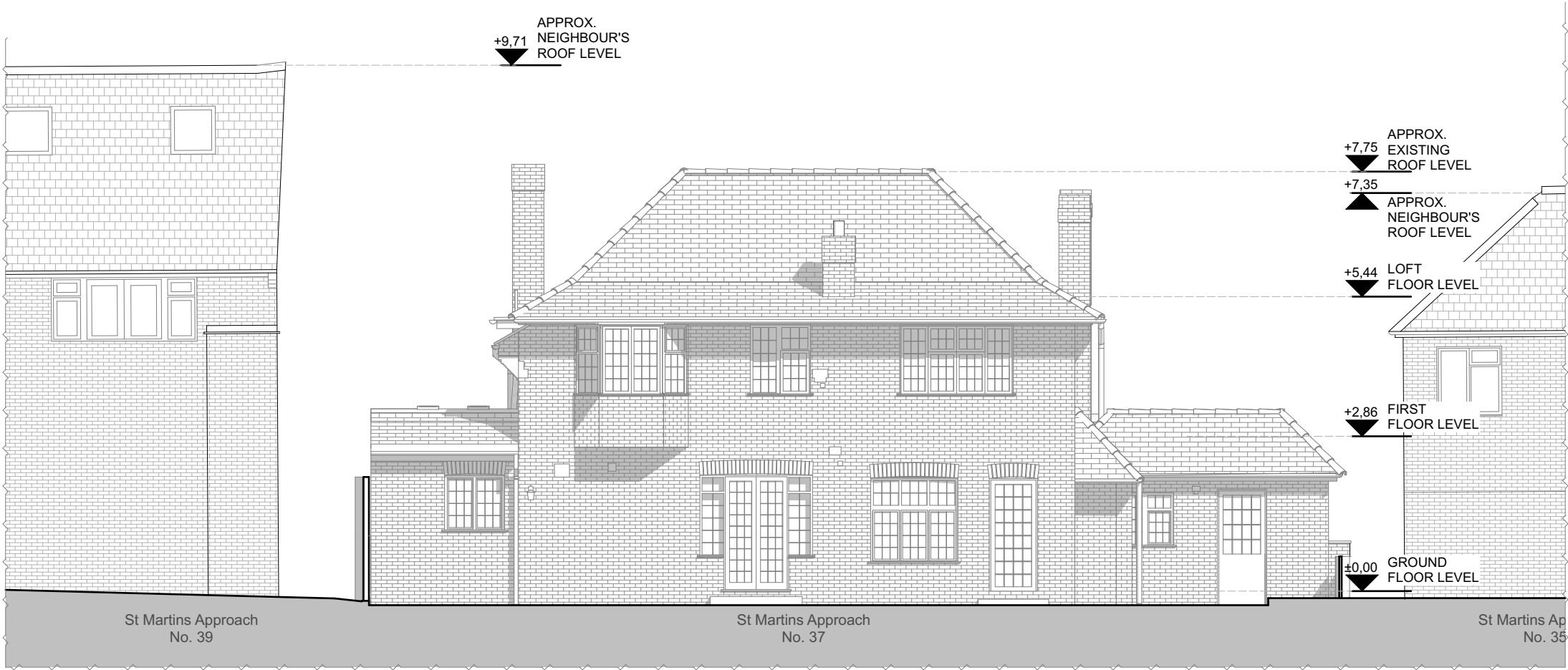






All dimensions to be checked on site. DO NOT SCALE FROM DRAWING.  
Discrepancies ambiguities and/or omissions between this drawing and  
information given elsewhere must be reported to the Architect immediately  
before proceeding.THIS DRAWING IS COPYRIGHT.

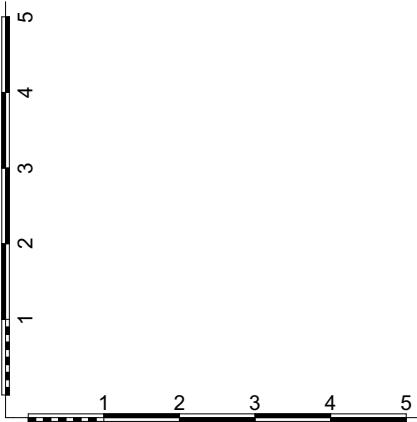
Revision	Description	Date



E (0) 21

Cross Section A-A as Existing

1:100



Scale: 1:100 @ A3  
Date: September/2022  
Drawing Status: Planning  
Rev: MS  
Drawn By: MS  
Drawing Number: E (0) 21

Project Title: 37 St Martins Approach, Ruislip HA4 7QH  
Drawing Title: Rear Elevation as Existing

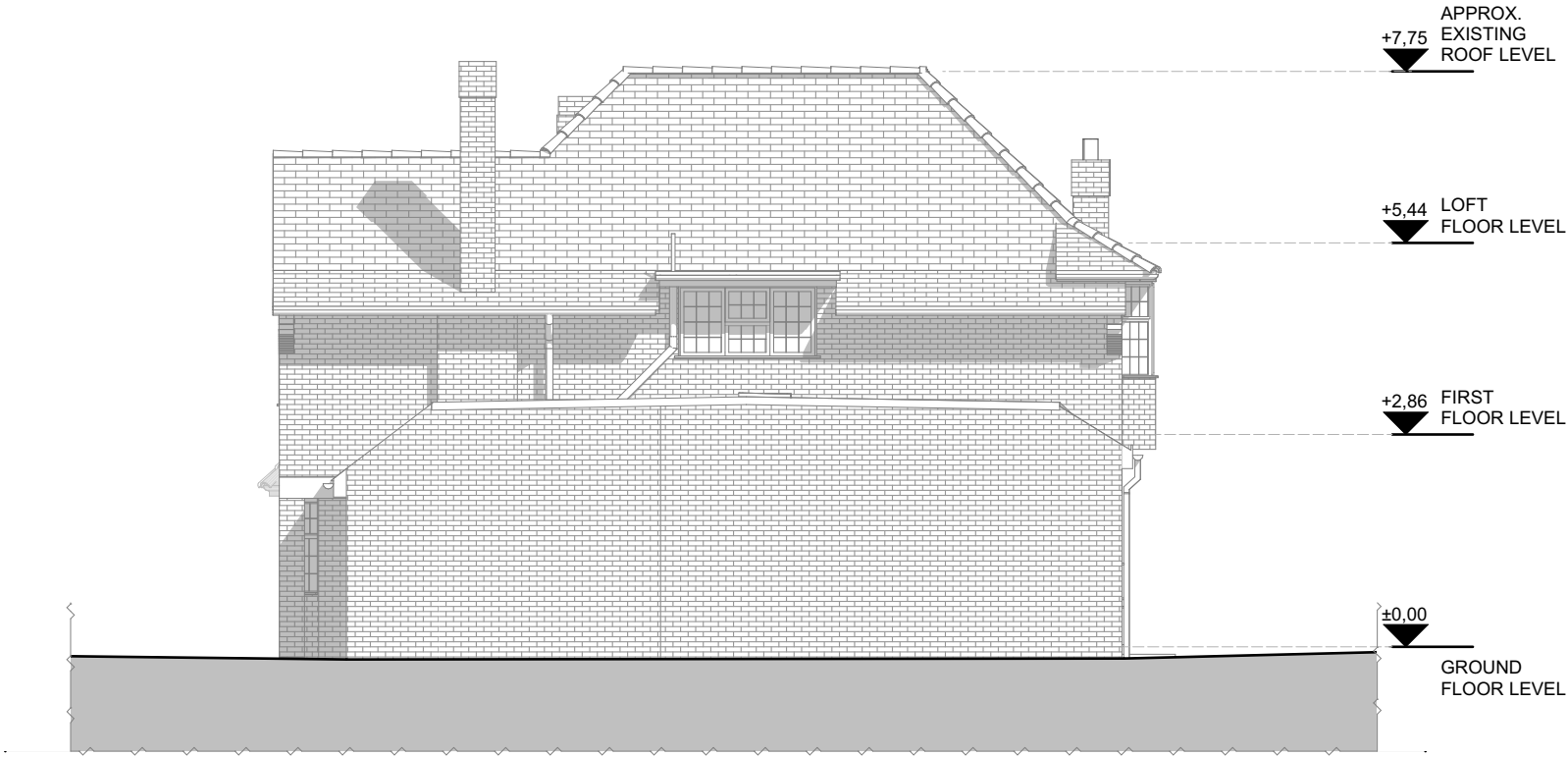
GK Architects Limited | London Office  
Niddry Lodge | 51 Holland Street | London W8 7JB  
T: 0203 280 3630 E: office@gkarchitects.co.uk  
GK Architects Limited | Durham Office  
Clavering House | Clavering Place | Newcastle upon Tyne NE1 3NG  
T: 0191 666 0196 E: office@gkarchitects.co.uk  
RIBA Chartered Practice  
www.gkarchitects.co.uk





All dimensions to be checked on site. DO NOT SCALE FROM DRAWING.  
Discrepancies ambiguities and/or omissions between this drawing and  
information given elsewhere must be reported to the Architect immediately  
before proceeding.THIS DRAWING IS COPYRIGHT.

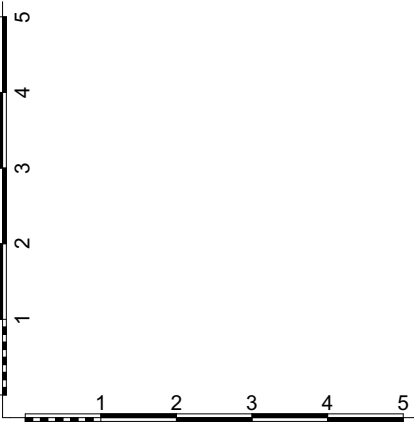
Revision	Description	Date



E (0) 22

Cross Section A-A as Existing

1:100



Scale:	Date:	Drawing Status:
1:100 @ A3	September/2022	Planning
Rev:	Drawn By:	Drawing Number:
	MS	E (0) 22

Project Title:
37 St Martins Approach, Ruislip HA4 7QH
Drawing Title:
Side 1 Elevation as Existing

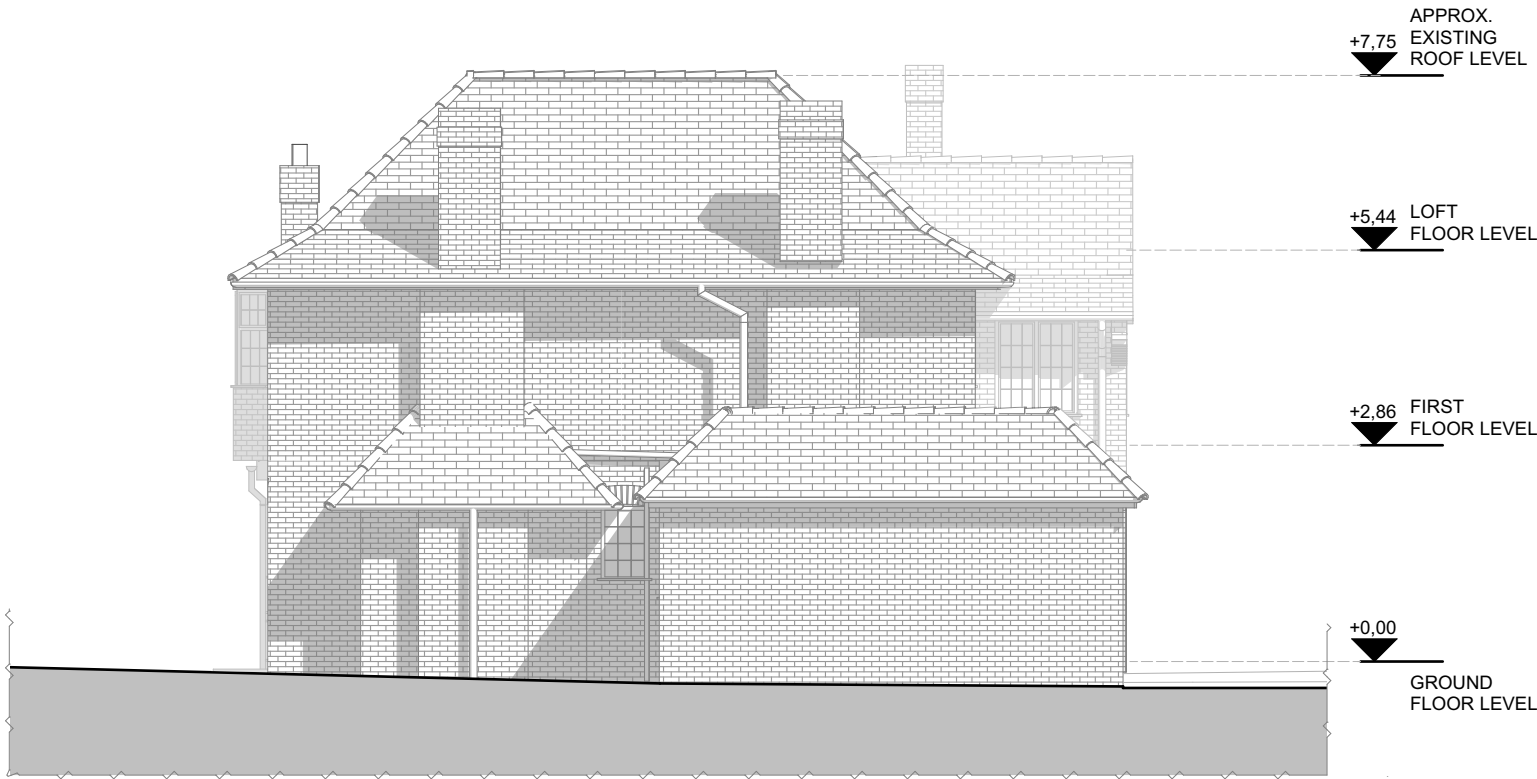
GK Architects Limited   London Office
Niddry Lodge   51 Holland Street   London W8 7JB
T: 0203 280 3630 E: office@gkarchitects.co.uk
GK Architects Limited   Durham Office
Clavering House   Clavering Place   Newcastle upon Tyne NE1 3NG
T: 0191 666 0196 E: office@gkarchitects.co.uk
RIBA Chartered Practice
www.gkarchitects.co.uk





All dimensions to be checked on site. DO NOT SCALE FROM DRAWING.  
Discrepancies ambiguities and/or omissions between this drawing and  
information given elsewhere must be reported to the Architect immediately  
before proceeding.THIS DRAWING IS COPYRIGHT.

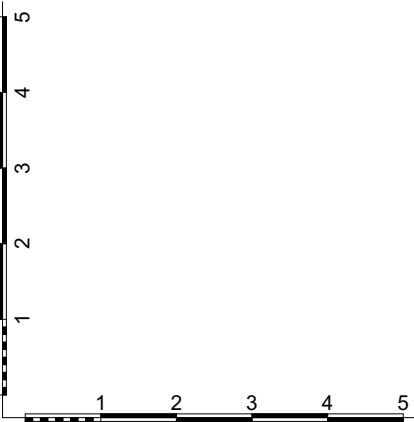
Revision	Description	Date



E (0) 23

Cross Section A-A as Existing

1:100



Scale:	Date:	Drawing Status:
1:100 @ A3	September/2022	Planning
Rev:	Drawn By:	Drawing Number:
	MS	E (0) 23

Project Title:
37 St Martins Approach, Ruislip HA4 7QH
Drawing Title:
Side 2 Elevation as Existing

<b>GK Architects Limited   London Office</b> Niddry Lodge   51 Holland Street   London W8 7JB T: 0203 280 3630 E: office@gkarchitects.co.uk
<b>GK Architects Limited   Durham Office</b> Clavering House   Clavering Place   Newcastle upon Tyne NE1 3NG T: 0191 666 0196 E: office@gkarchitects.co.uk
RIBA Chartered Practice
www.gkarchitects.co.uk

