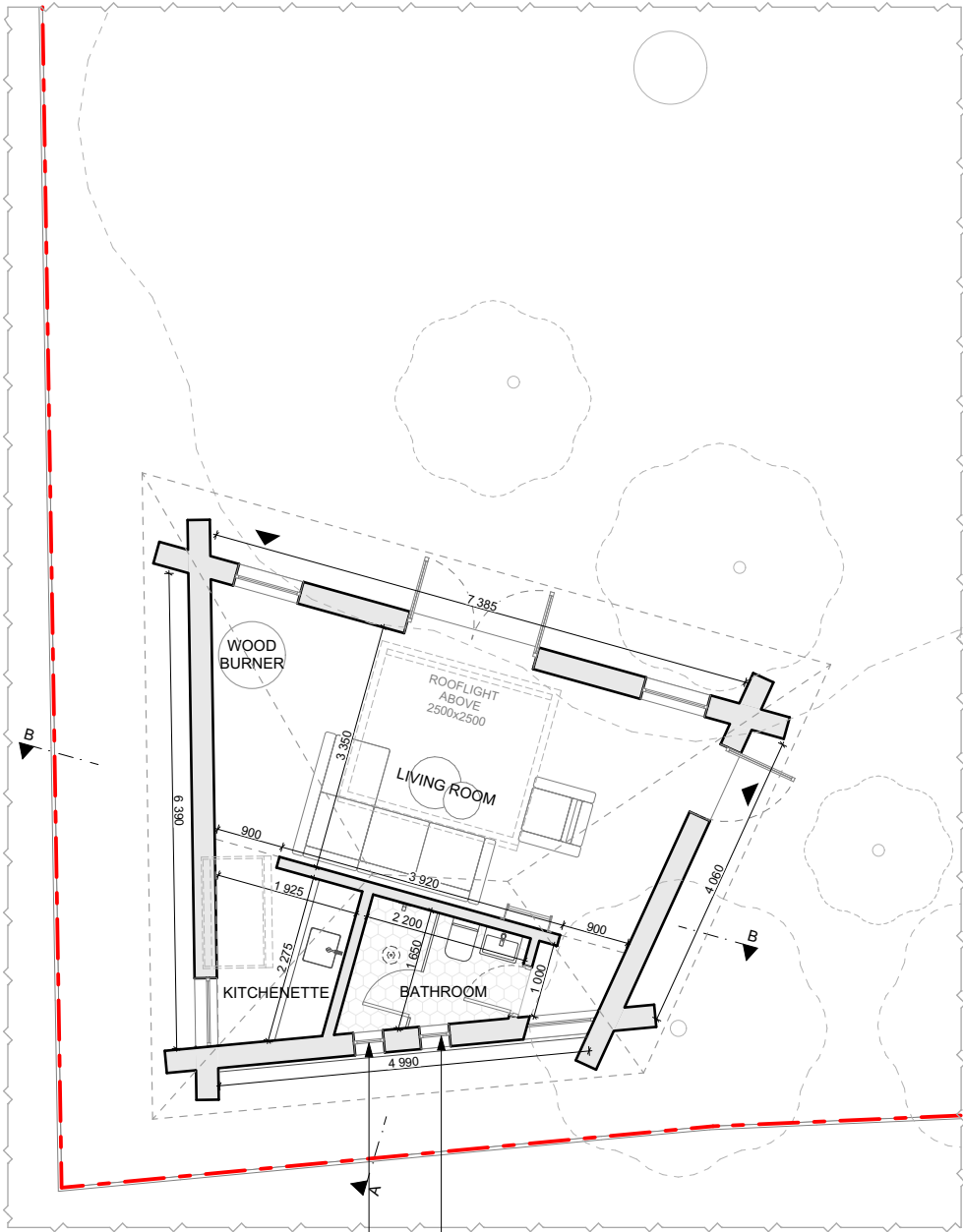


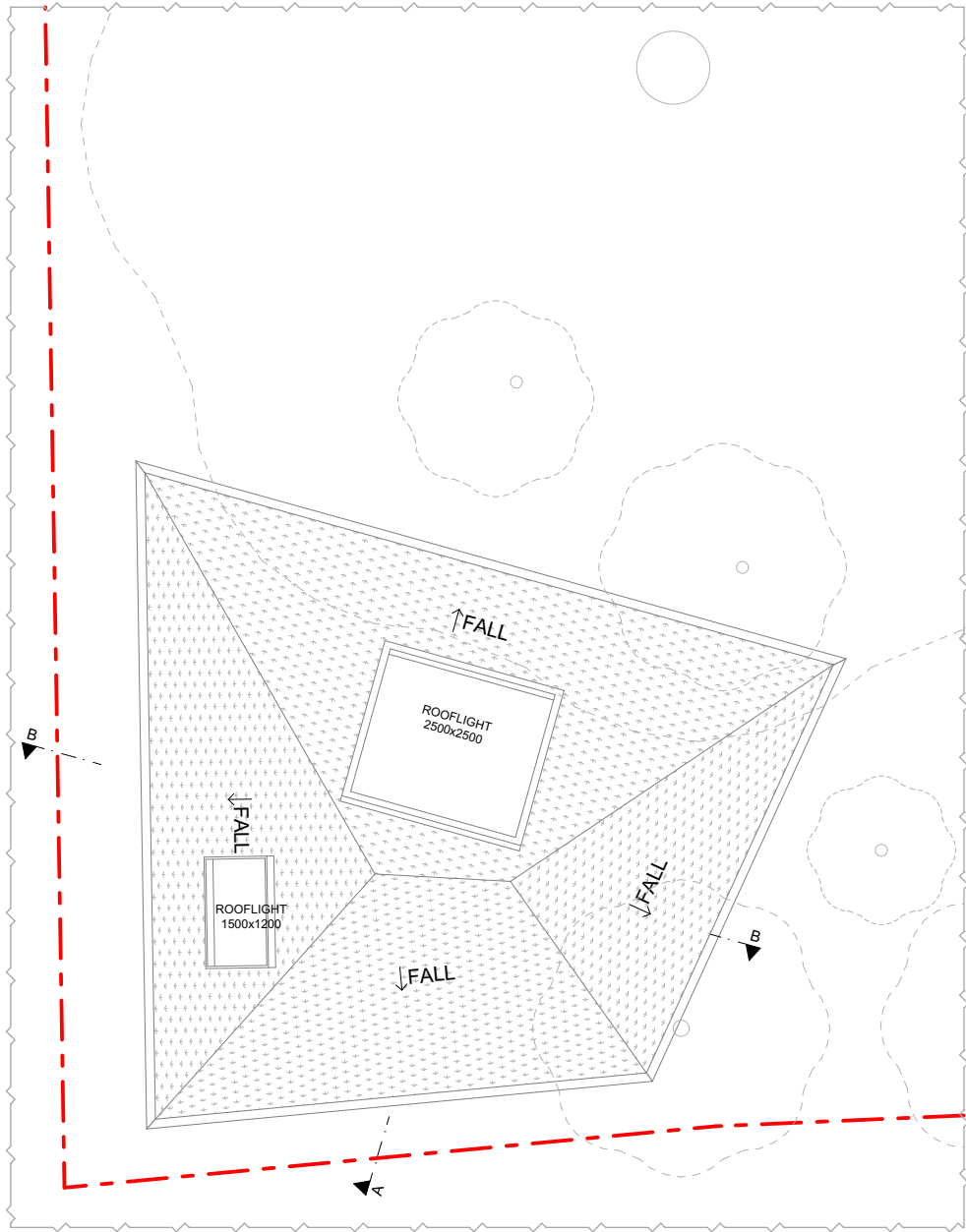


All dimensions to be checked on site. DO NOT SCALE FROM DRAWING.
Discrepancies ambiguities and/or omissions between this drawing and
information given elsewhere must be reported to the Architect immediately
before proceeding. THIS DRAWING IS COPYRIGHT.

Revision	Description	Date

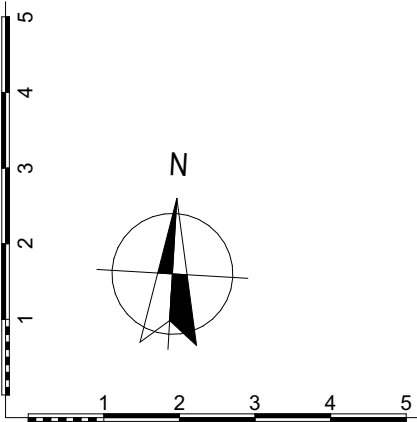


GH (0) 01 Garden House Ground Floor Plan as Proposed 1:100



GH (0) 03 Garden House Roof Plan as Proposed 1:100

THIN, FIXED, FULL
HEIGHT WINDOWS
OBSCURE GLAZED



Scale: 1:100 @ A3 Date: December/2022 Drawing Status: Planning Project Title: 37 St Martins Approach, Ruislip HA4 7QH
Rev: Drawn By: MS Drawing Number: GH (0) 01 Drawing Title: Garden House Plans as Proposed

GK Architects Limited | London Office
Nidry Lodge | 51 Holland Street | London W8 7JB
T: 0203 280 3630 E: office@gkarchitects.co.uk
GK Architects Limited | Durham Office
Clavering House | Clavering Place | Newcastle upon Tyne NE1 3NG
T: 0191 666 0196 E: office@gkarchitects.co.uk
RIBA Chartered Practice www.gkarchitects.co.uk

