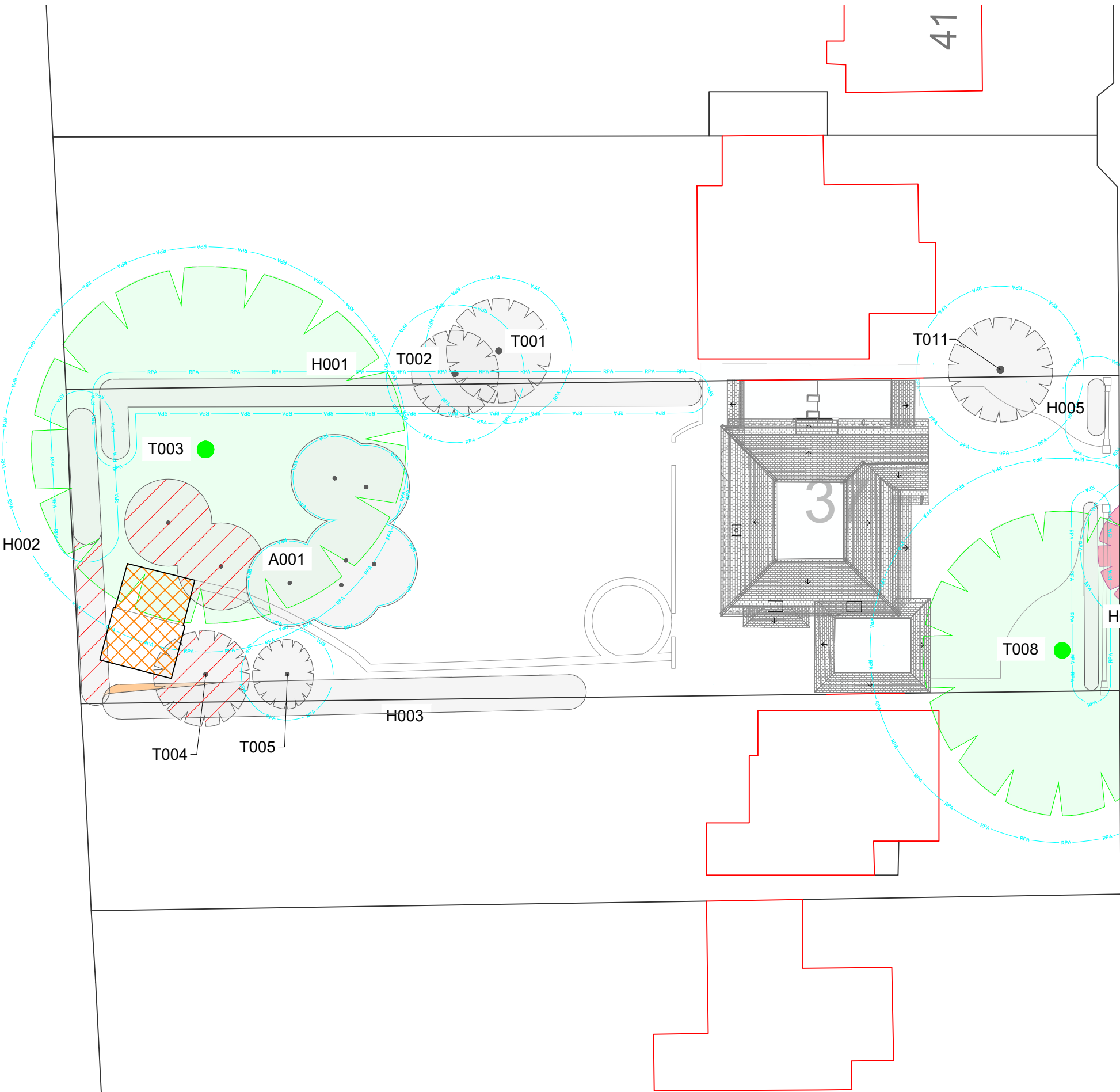


Existing Site Plan



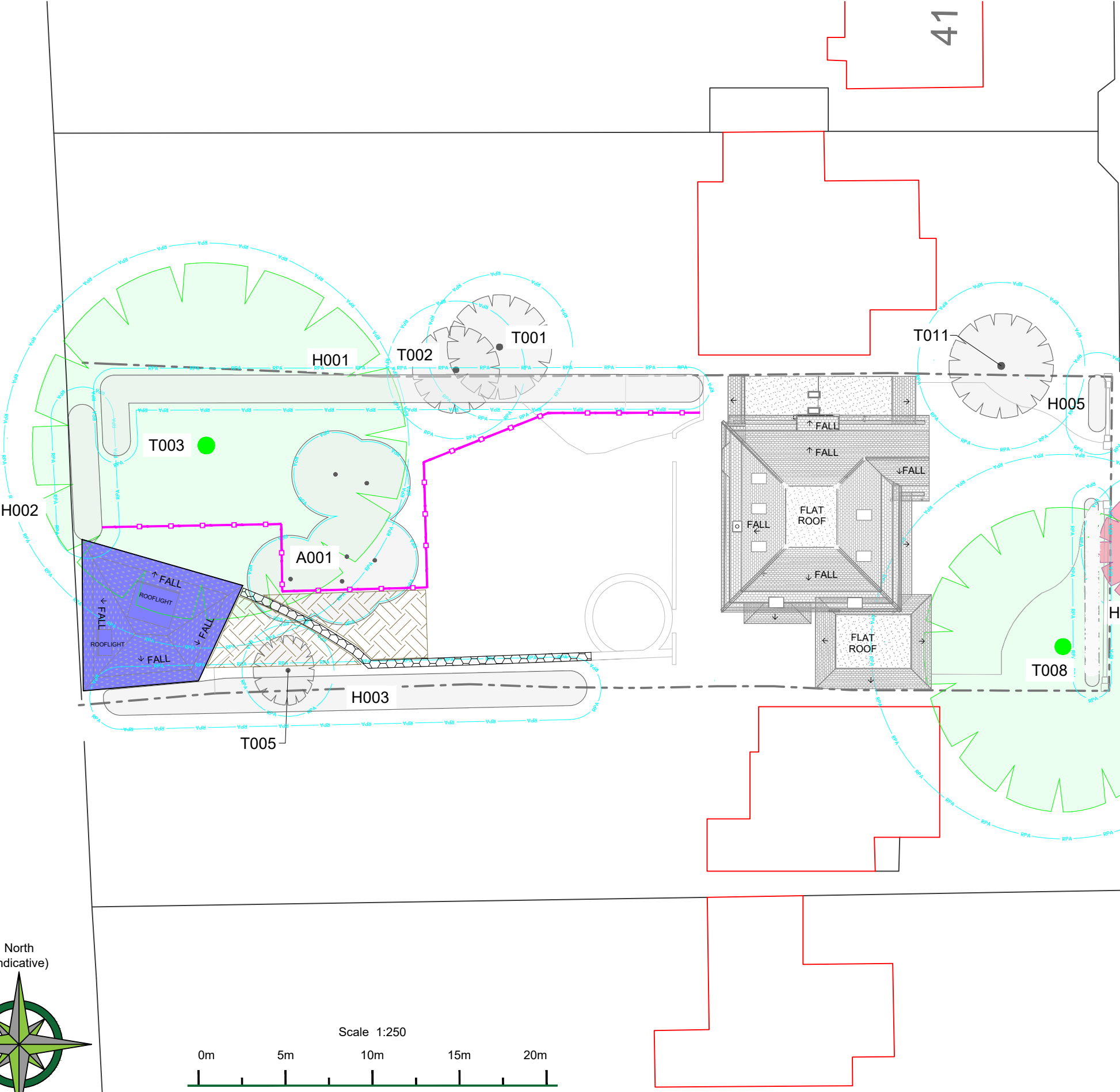
CATEGORY AND DEFINITION			
Trees unsuitable for retention			
Category U	Those in such condition that they cannot realistically be retained as living trees in the current land use for longer than 10 years		
Trees to be considered for retention			
Category A	Trees of high quality with an estimated remaining life expectancy of at least 40 years		
Category B	Trees of moderate quality with an estimated remaining life expectancy of at least 20 years		
Category C	Trees of low quality with an estimated remaining life expectancy of at least 10 years, or young trees with a stem diameter below 150mm		
-	19/12/2022	KFJ	Based on GK Architects Site Plan as Existing drg no E(0)09 and Site Plan as Proposed drg no GH(0)09
Rev:	Date:	By:	Revision:
The position, condition, and dimensions of the trees are based on a site survey undertaken on 22/11/2021			
"The original of this drawing was produced in colour - a monochrome copy should not be relied upon"			
NOTE:			
Hayden's Arboricultural Consultants were not provided with a Topographical Survey or Base Plan showing the positions of the trees/landscape features on this site, so their locations have been fixed using GPS. As such the position of the trees/landscape features should not be taken as exact but gives a fair distribution of their locations on site.			

Cherry. Offsite highway tree. Multi-stemmed at 2m

ST MARTIN'S APPROACH

LB

Proposed Site Plan



Cherry. Offsite highway tree. Multi-stemmed at 2m

ST MARTIN'S APPROACH

LEGEND	
	Existing Tree/Feature BS 5837:2012 Category A
	Existing Tree/Feature BS 5837:2012 Category C
	Trees which require crown reduction to facilitate the prospective development
	Existing Tree/Feature to be removed to allow for development BS 5837:2012 Category C
	Line of Root Protection Area (RPA) - calculated following guidelines set in BS 5837:2012
	Offsite Cherry Tree
	Existing structure and decking to be demolished and removed from site by hand
	Line of proposed temporary protective barrier
	Area of temporary Ground Protection
	Proposed development within & close to the RPA to be constructed following the No Dig Specification
	Area of specialised foundations

