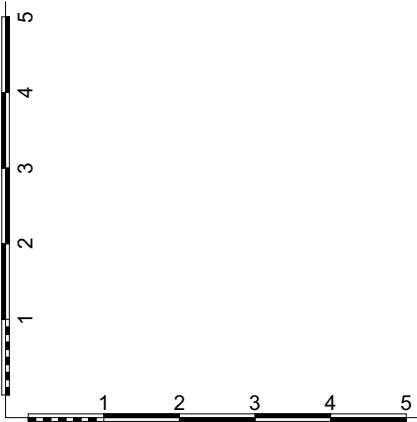
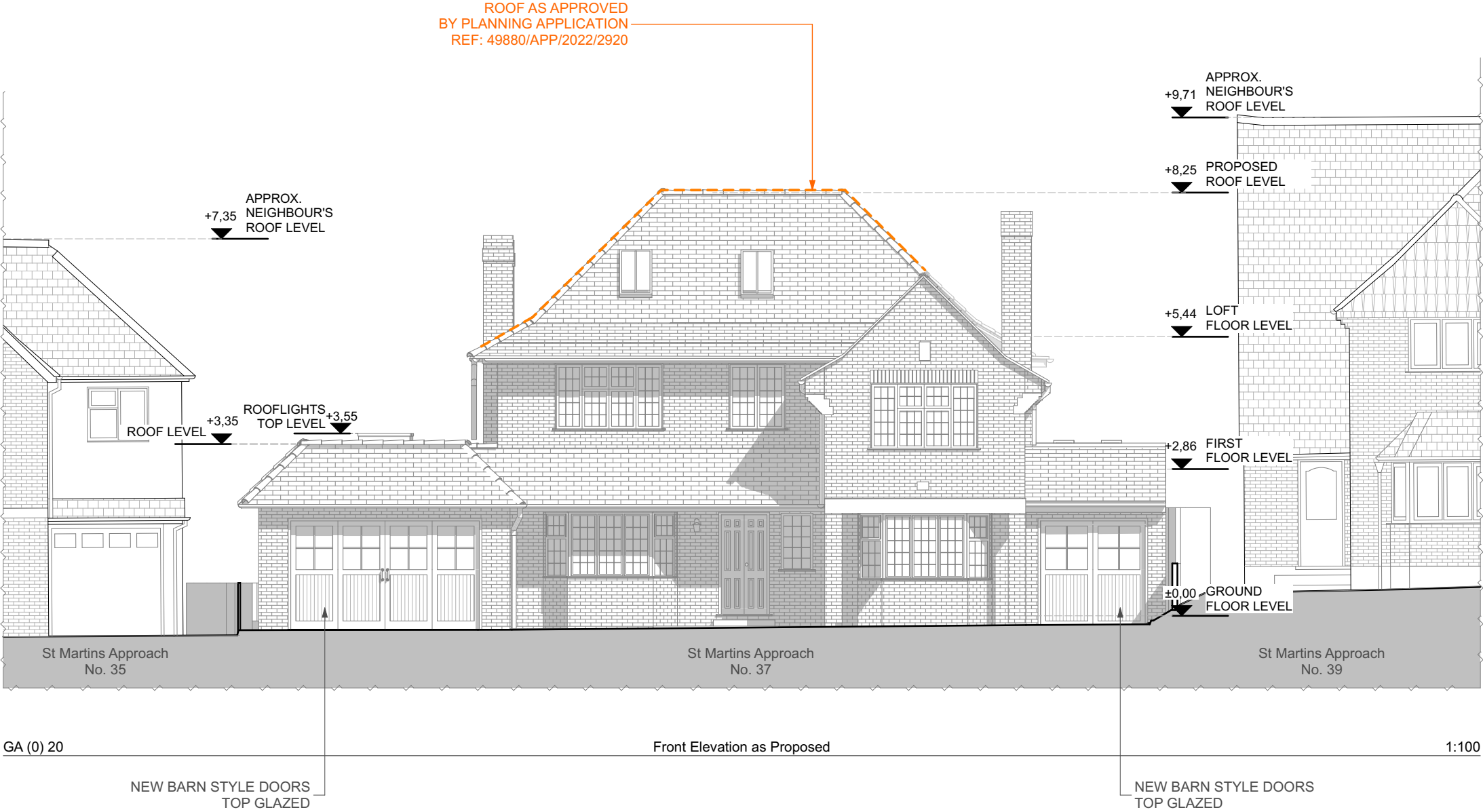




All dimensions to be checked on site. DO NOT SCALE FROM DRAWING.  
Discrepancies ambiguities and/or omissions between this drawing and  
information given elsewhere must be reported to the Architect immediately  
before proceeding.THIS DRAWING IS COPYRIGHT.

Revision	Description	Date



Scale: 1:100 @ A3  
Date: December/2022  
Drawing Status: Planning  
Rev: MS  
Drawn By: MS  
Drawing Number: GA (0) 20

Project Title:  
37 St Martins Approach,  
Ruislip HA4 7QH  
Drawing Title:  
Front Elevation as Proposed

GK Architects Limited | London Office  
Nidry Lodge | 51 Holland Street | London W8 7JB  
T: 0203 280 3630 E: office@gkarchitects.co.uk  
GK Architects Limited | Durham Office  
Clavering House | Clavering Place | Newcastle upon Tyne NE1 3NG  
T: 0191 666 0196 E: office@gkarchitects.co.uk  
RIBA Chartered Practice  
www.gkarchitects.co.uk

