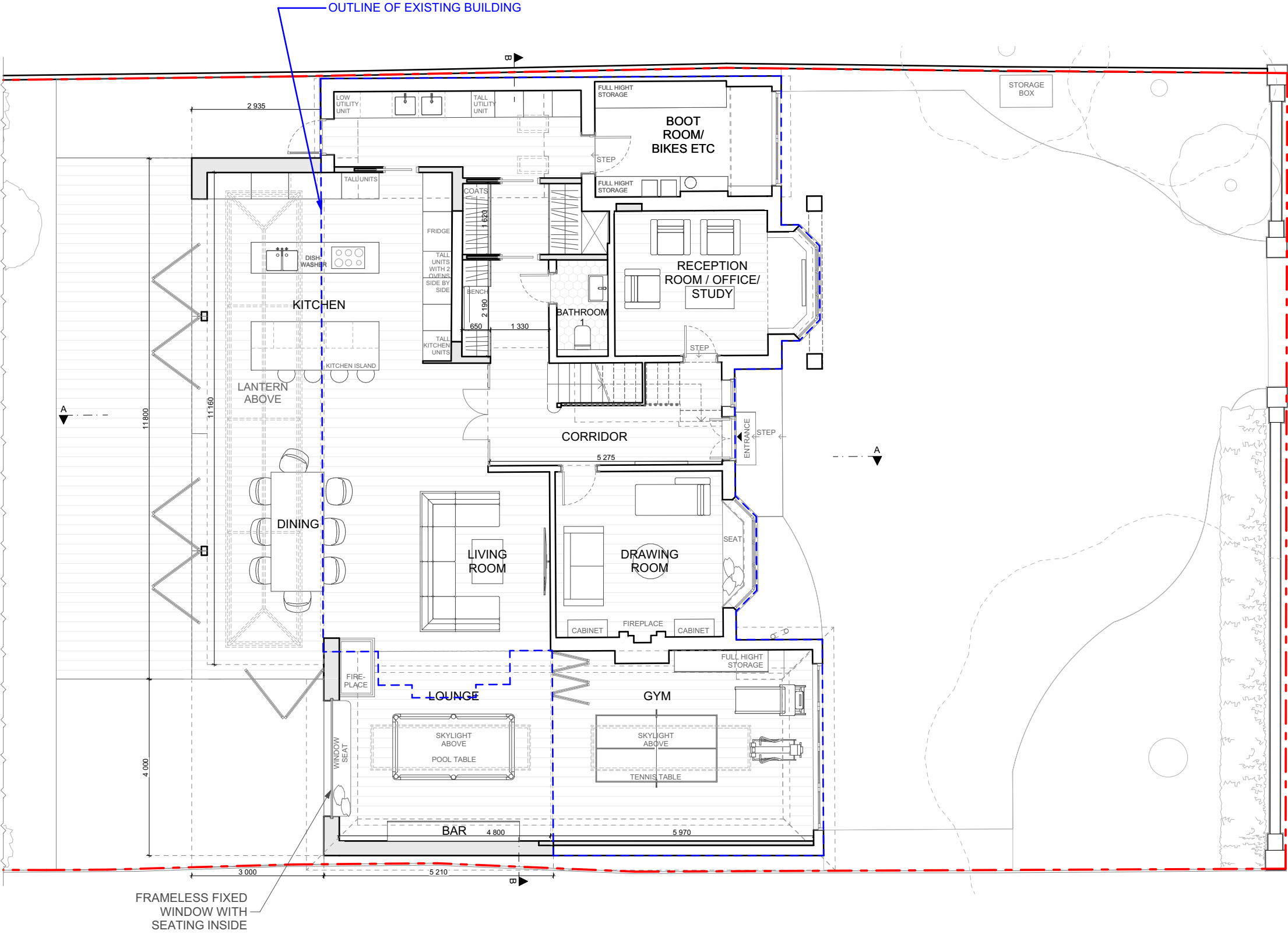
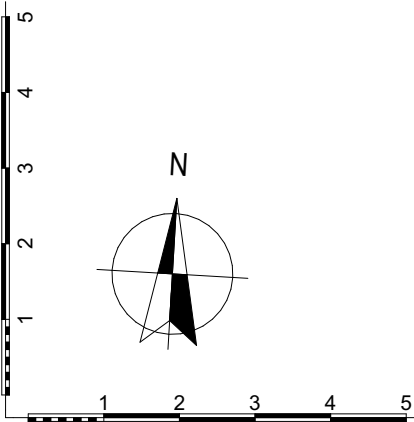




All dimensions to be checked on site. DO NOT SCALE FROM DRAWING. Discrepancies ambiguities and/or omissions between this drawing and information given elsewhere must be reported to the Architect immediately before proceeding. THIS DRAWING IS COPYRIGHT.

Revision	Description	Date



GA (0) 01 Ground Floor Plan as Proposed 1:100

KEY PLAN:

- EXISTING
- PROPOSED

Scale: 1:100 @ A3 Date: December/2022 Drawing Status: Planning Project Title: 37 St Martins Approach, Ruislip HA4 7QH  
Rev: Drawn By: MS Drawing Number: GA (0) 01 Drawing Title: Ground Floor Plan as Proposed

GK Architects Limited | London Office  
Niddry Lodge | 51 Holland Street | London W8 7JB  
T: 0203 280 3630 E: office@gkarchitects.co.uk  
GK Architects Limited | Durham Office  
Clavering House | Clavering Place | Newcastle upon Tyne NE1 3NG  
T: 0191 666 0196 E: office@gkarchitects.co.uk  
RIBA Chartered Practice www.gkarchitects.co.uk

