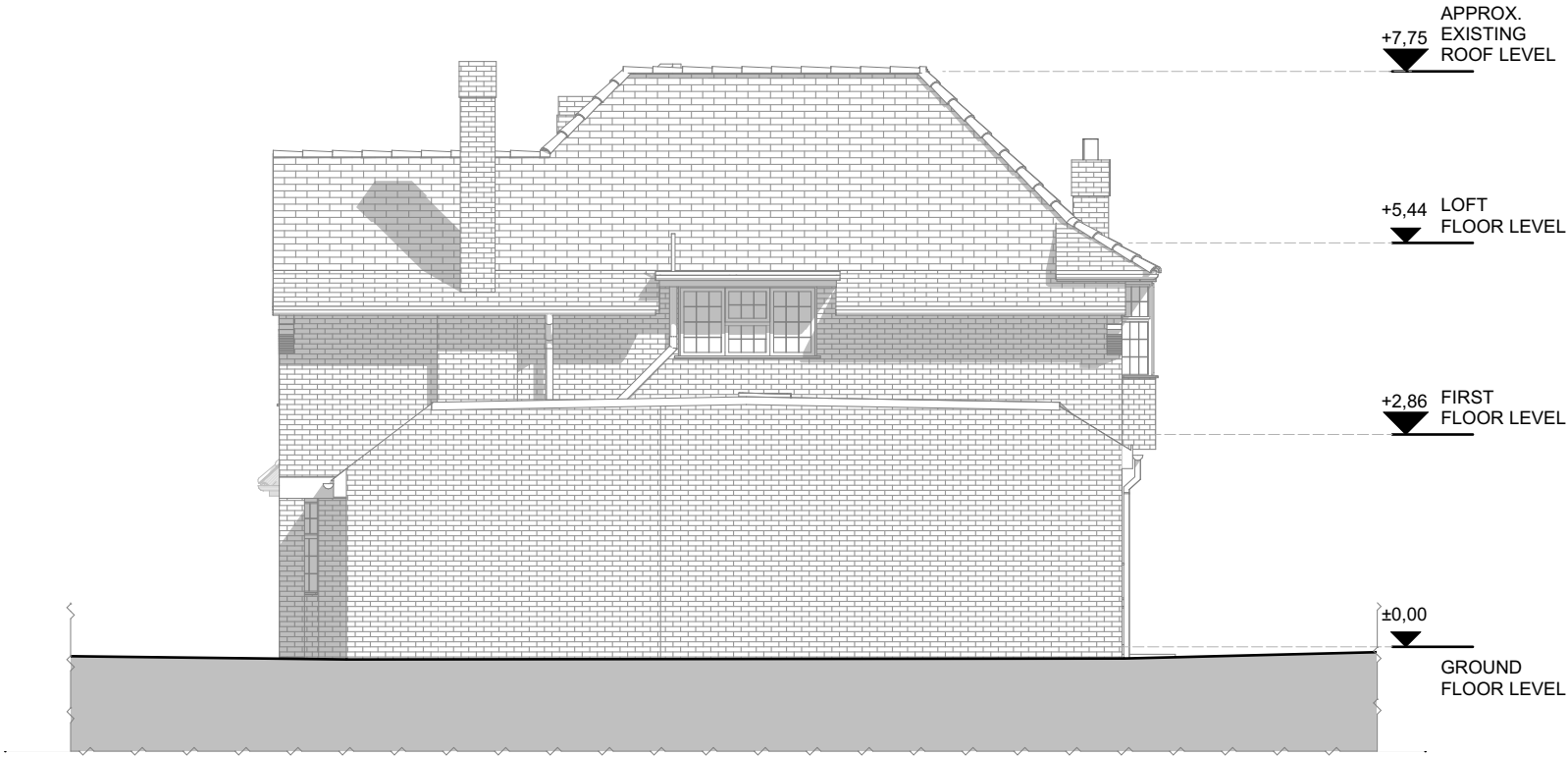




All dimensions to be checked on site. DO NOT SCALE FROM DRAWING.
Discrepancies ambiguities and/or omissions between this drawing and
information given elsewhere must be reported to the Architect immediately
before proceeding.THIS DRAWING IS COPYRIGHT.

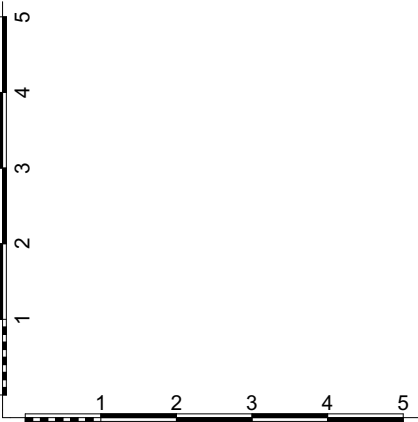
Revision	Description	Date



E (0) 22

Cross Section A-A as Existing

1:100



Scale:	Date:	Drawing Status:
1:100 @ A3	December/2022	Planning
Rev:	Drawn By:	Drawing Number:
	MS	E (0) 22

Project Title:
37 St Martins Approach, Ruislip HA4 7QH
Drawing Title:
Side 1 Elevation as Existing

GK Architects Limited London Office Niddry Lodge 51 Holland Street London W8 7JB T: 0203 280 3630 E: office@gkarchitects.co.uk	GK Architects Limited Durham Office Clavering House Clavering Place Newcastle upon Tyne NE1 3NG T: 0191 666 0196 E: office@gkarchitects.co.uk
RIBA Chartered Practice	www.gkarchitects.co.uk

