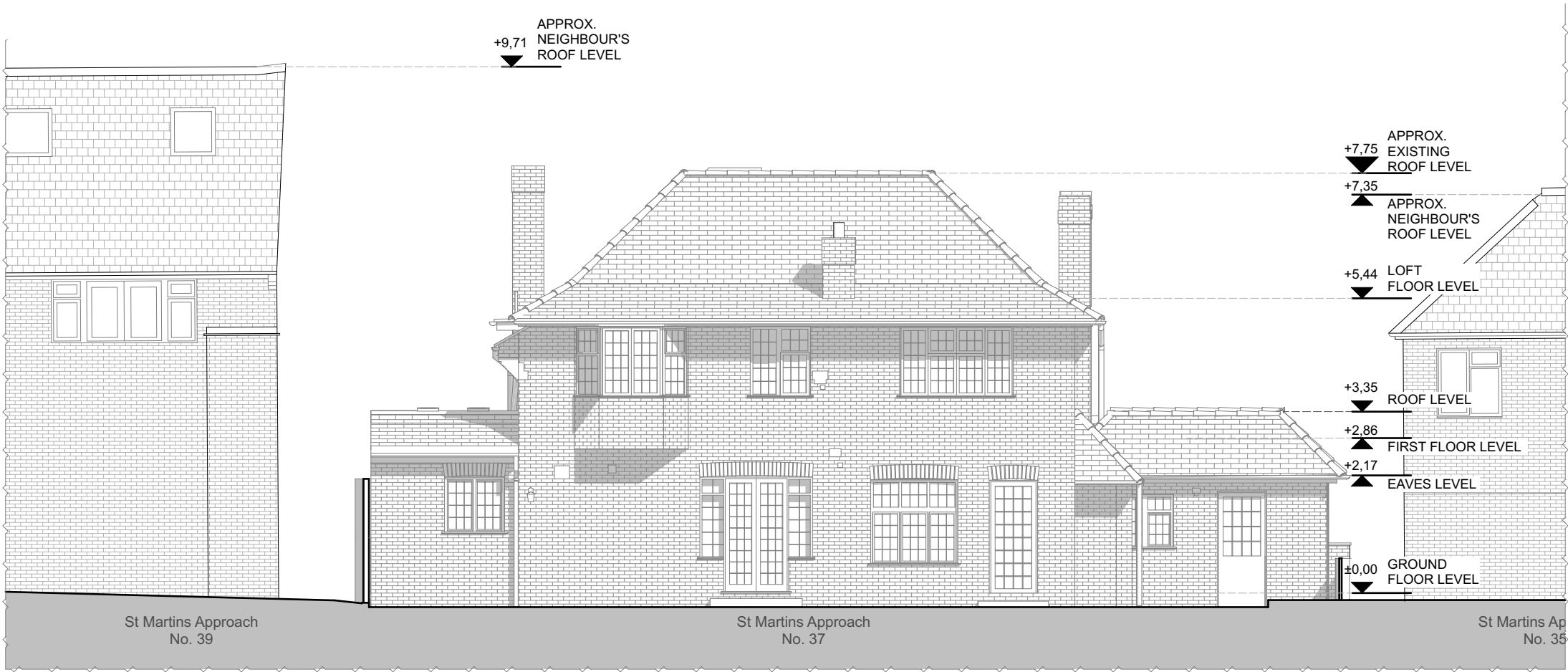




All dimensions to be checked on site. DO NOT SCALE FROM DRAWING.  
Discrepancies ambiguities and/or omissions between this drawing and  
information given elsewhere must be reported to the Architect immediately  
before proceeding.THIS DRAWING IS COPYRIGHT.

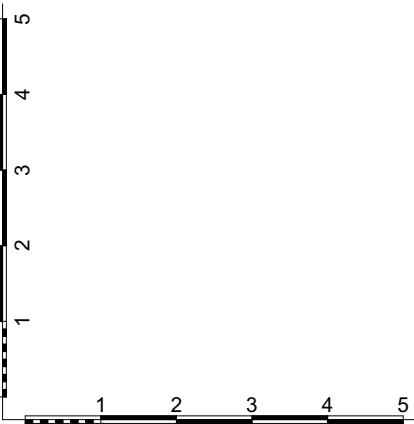
Revision	Description	Date



E (0) 21

Cross Section A-A as Existing

1:100



Scale: 1:100 @ A3  
Date: December/2022  
Drawing Status: Planning  
Rev: MS  
Drawn By: MS  
Drawing Number: E (0) 21

Project Title: 37 St Martins Approach, Ruislip HA4 7QH  
Drawing Title: Rear Elevation as Existing

GK Architects Limited | London Office  
Niddry Lodge | 51 Holland Street | London W8 7JB  
T: 0203 280 3630 E: office@gkarchitects.co.uk  
GK Architects Limited | Durham Office  
Clavering House | Clavering Place | Newcastle upon Tyne NE1 3NG  
T: 0191 666 0196 E: office@gkarchitects.co.uk  
RIBA Chartered Practice  
www.gkarchitects.co.uk

