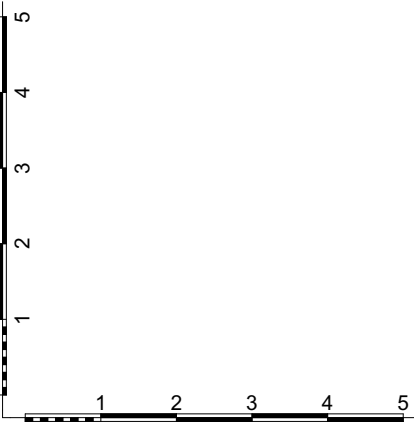
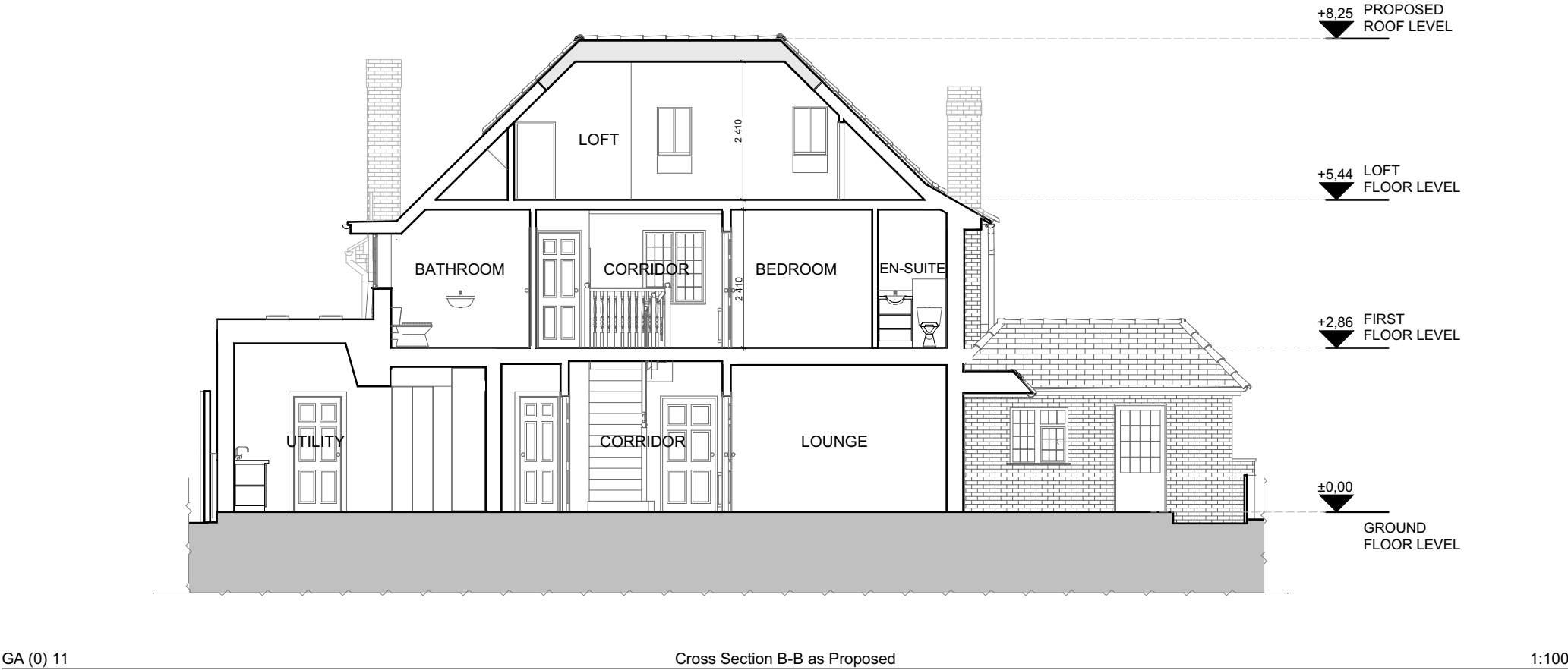




All dimensions to be checked on site. DO NOT SCALE FROM DRAWING. Discrepancies ambiguities and/or omissions between this drawing and information given elsewhere must be reported to the Architect immediately before proceeding. THIS DRAWING IS COPYRIGHT.

Revision	Description	Date



KEY PLAN:

- EXISTING
- PROPOSED

Scale: 1:100 @ A3

Rev:

Date: September/2022

Drawn By: MS

Drawing Status: Planning

Drawing Number: GA (0) 11

Project Title: 37 St Martins Approach, Ruislip HA4 7QH

Drawing Title: Cross Section B-B as Proposed

GK Architects Limited | London Office
Niddry Lodge | 51 Holland Street | London W8 7JB
T: 0203 280 3630 E: office@gkarchitects.co.uk

GK Architects Limited | Durham Office
Clavering House | Clavering Place | Newcastle upon Tyne NE1 3NG
T: 0191 666 0196 E: office@gkarchitects.co.uk

RIBA Chartered Practice www.gkarchitects.co.uk

