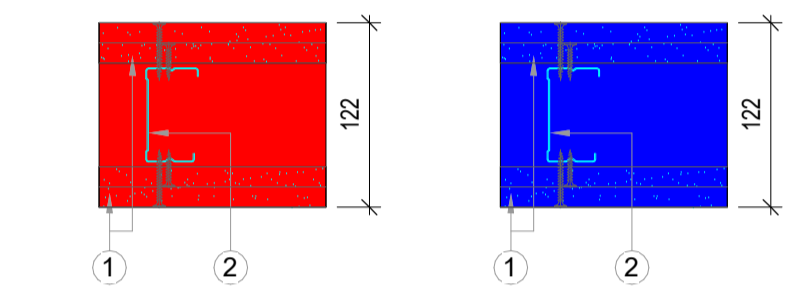


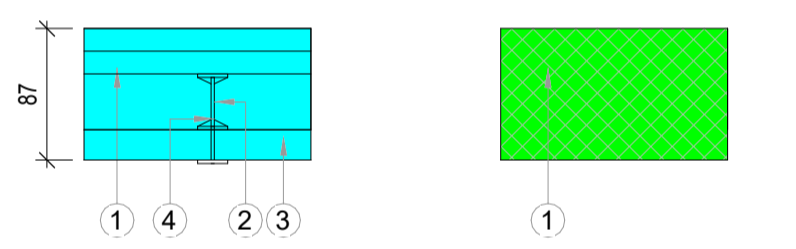
All levels and dimensions to be checked on site prior to construction / fabrication; report discrepancies immediately. Do not scale dimensions from this drawings. This drawing is copyright protected.

REVISION	DATE	DESCRIPTION	BY	CHKD
A	22.05.24	Fire Protection to Columns Updated. General update to reflect Unit Mix SK18	GP	DA
B	30.08.24	Building Warrant Issue. General Update to include emergency voice system and fire strategy to L2/L3 existing.	GP	AF
C	28.04.25	Generally updated to show fire rated of walls, wall types, travel distance, fire hose distance to existing and EVO to evac. lift now included.	GP	AF
D	30.05.25	Fire tender hose feeding to existing building revised. Wall type revised to tie with ratings	GP	
E	30.05.25	FINAL ISSUE	GP	

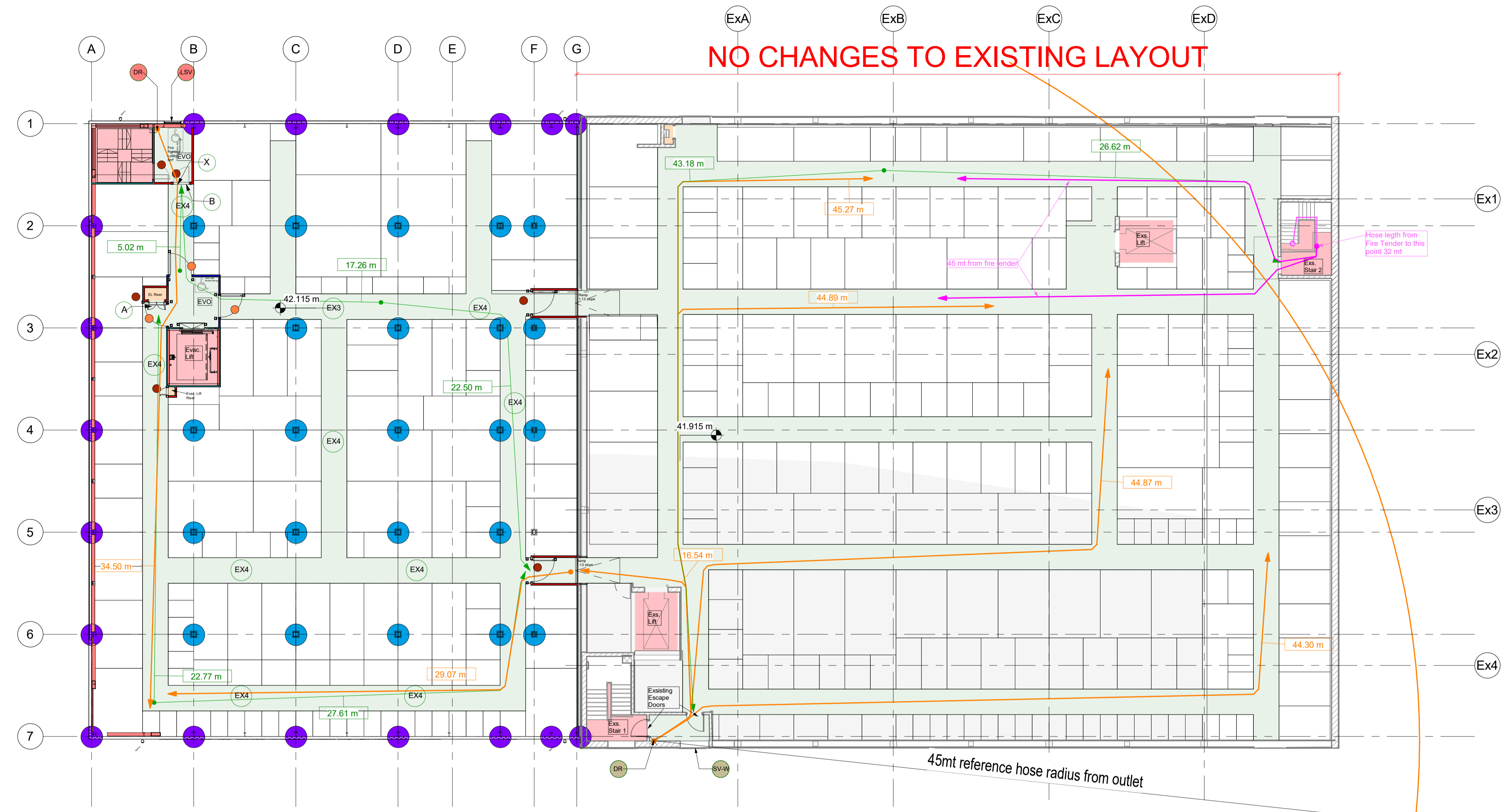
- INTERNAL PARTITION NOTES:**
- Height:** All partitions to be full height up to underside of structural floor slab.
 - Installation:** All partitions to be installed in accordance with proprietary manufacturer's guidelines.
 - Fire Stopping:** Where partition is fire rated trapezoidal cavity filler to match the rating of the partition should be installed to floor deck at head of partition.
 - Storage Unit Partitioning:** Blue line denotes internal storage unit float. Works part of Trade Package 11_Storage Unit Partitioning
 - To be read in conjunction with TP 349 Fire protection



- Internal Partition Type IP:1**
- 2no. 12.5mm British Gypsum Fireboard (joints taped and filled) either side of.
 - 70mm Metal S 50 °C studs
- British Gypsum Product Reference: **A206079 (EN)**
Fire rating: 120 minutes
- Internal Partition Type IP:2**
- 2no. 12.5mm British Gypsum Fireboard (joints taped and filled) either side of.
 - 70mm Metal S 50 °C studs
- British Gypsum Product Reference: **A206015 (EN)**
Fire rating: 30 Minutes



- Internal Partition Type IP:7**
- 2 Layers 12.5mm Gyproc plasterboard on
 - Gyproc 60 x 170 T Studs at 600mm centres
 - Gyproc CoreBoard 19mm between studs
 - Gyproc G102 Retaining Channel.
- Max. height 4200mm.
Partition Thickness: 87mm
British Gypsum System Reference: **A306002 (A) (EN)**
Fire rating: 60 min.
- Masonry Wall**
- 140mm Blockwork Fair Finish

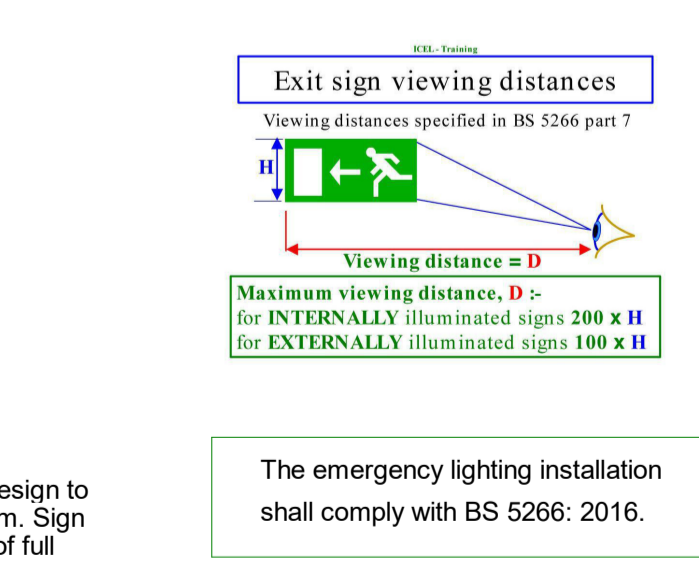


Level 04 Fire Strategy
Scale - 1 : 150



- 1 Hr. F.R Door
- GB Gerda Box
- LSV Lobby Smoke Vent min. 1.5m₂
- DR Dry Riser
- DRI Dry Riser Inlet
- DR Dry Riser Existing New External Inlet to GF to be provided
- SV-W Smoke Vent-Openable Window Existing Provision

- EX 1 Fire exit - Double Sided (Running Man & Arrow)
- EX 2 Fire exit - Single Sided (Running Man & Arrow Left)
- EX 3 Fire exit - Double Sided (Running Man & Arrow Right / Left)
- EX 4 Fire exit - Single Sided (Running Man & Arrow Down)
- EX 5 Fire exit - Single Sided (Running Man & Arrow Right)
- A Fire escape keep clear
- B Push bar to open
- X Fire exit Keep clear



FIRE STRATEGY KEY:

- 60 min. fire rated protected liftwell [refer to 24 series for details]
- 60 min. fire rated protected escape stair [refer to 24 series for details]
- 1500mm circulation corridors
- 60min. fire rated protected plant rooms/ducts
- Extents of mezzanine floor perimeter 60 min fire rated fire stopping
- 120min. Fire Rated compartment line
- 60min. Fire Rated compartment line
- 140mm Masonry Wall
- Travel Distance to Compartment/Separating Wall or Point of Diversion
- 45m Hose Length from Dry Riser
- Hose Length from Fire tender (Existing Building)
- 30min. Fire Rated separation line
- 30 min. Hr. F.R Door
- 60 min. FR Intumescent Paint
- 60 min. FP Column casing

- DETAIL A Refer to 28_011 for strategy details
- DETAIL B Refer to 28_010 for strategy details

- NOTES:**
- All premises that are required to undertake health and safety risk assessments must comply to the Regulatory Reform (Fire Safety) Order 2005 and clearly mark all emergency escape routes and exits
- Photoluminescent Self Adhesive Vinyl and Rigid Plastic - provide effective escape route illumination in the event of power loss, will stay illuminated for over 6 hours
- 3mm Foamed Rigid Plastic - Double Sided Hanging Signs with pre-drilled holes - Use the hanging kit to suspend from the relevant soffit.
- Emergency signage to be provided and installed accordance with BS ISO 3864-1:2011, BS 5499-4:2013 and BS 5499-10:2014+A1:2023
- EVC** Emergency Voice communications system

PLANNING

SCALE	DATE	DRAWN	CHECKED
As indicated	March 24	GP	DA

PROJECT
Shurgard UK Ltd.
UK04 Hayes
London UB4 0HD

DRAWING
Level 4 Fire Strategy as Proposed

Threesixty Architecture
10 MONTROSE STREET
GLASGOW
G1 1RE

0141 229 7575
www.360architecture.com

DRAWING No. **21065GA-28-005** DRAWING Rev. **E**