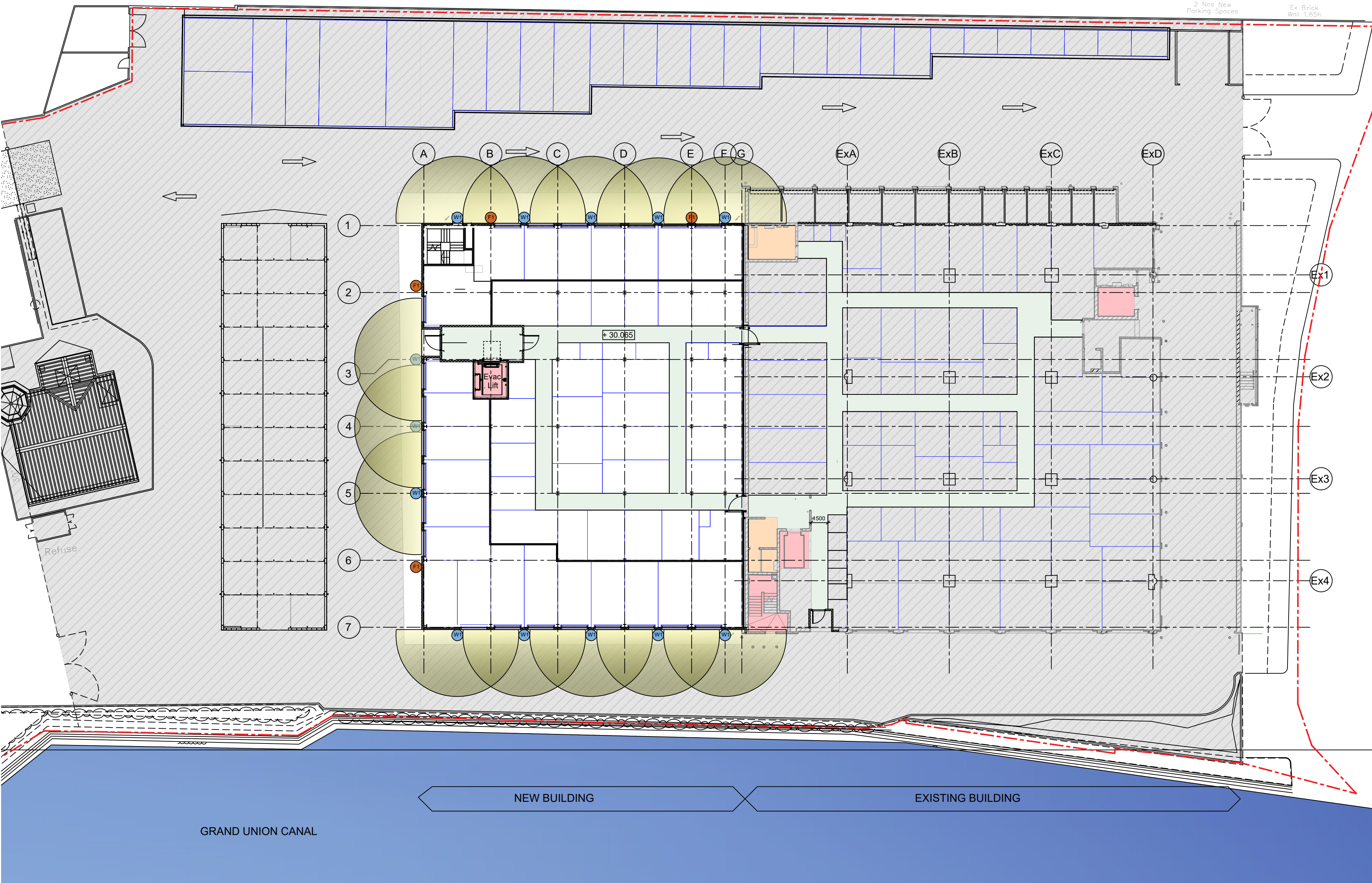


All levels and dimensions to be checked on site prior to construction / fabrication, report discrepancies immediately.

This drawing is copyright protected.

REVISION			
*	08.04.24	First Issue - PLANNING	GP AF
A	24.09.24	F1 light fitting removed from the canal side Photometric footprint of W1 shown	GP

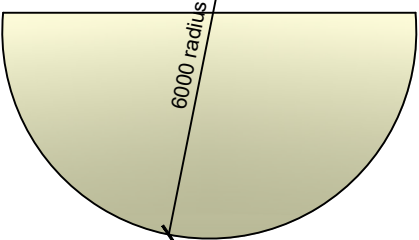


No Changes to existing external lighting provision

F1 Wall mounted luminaire  
6000mm AFFL  
49 W - 5350 Lm



W1 Wall mounted luminaire  
2600mm AFFL  
9.9W - 1087 Lm



W1 - Photometric footprint  
- max 5w output

Site Boundary Line

## PLANNING

SCALE	DATE	DRAWN	CHECKED
1:250@A2	Mar'24	GP	AF

PROJECT  
SHURGARD Europe Ltd.  
Uxbridge Rd. Hayes  
UB4 0HD - London

DRAWING  
External Lighting  
As Proposed

Threesixty  
Architecture

10 MONTROSE STREET  
GLASGOW  
G1 1RE  
t 0141 229 7575  
www.360architecture.com

DRAWING No.  
21065GA-90-001A

**Planning Notes:**  
All new proposed luminaires along the canal to provide less than 5 lux of spillage on the canal side of the building perimeter and the footprint should not exceed 6.0 mt from the new building extension perimeter wall. The no light expected to spill towards the canal corridor in line with the Bat Conservation Trust guidelines

SCALE 1:250  
0 2 4 6 8 10m