

# **Trevor Heaps**

## **Arboricultural Consultancy Ltd.**

12 Plover Drive, Milford-on-Sea, Hampshire, SO41 0XF - Tel: 07957 763 533

Email: [trevor@trevorheaps.co.uk](mailto:trevor@trevorheaps.co.uk) • [www.trevorheaps.co.uk](http://www.trevorheaps.co.uk)



### **Arboricultural Impact Assessment Method Statement & Tree Protection Plan (to BS:5837 2012)**

**Former CAB site, 9 Eastcote Road  
Ruislip HA4 8BD**

Prepared for Hunters

Prepared by Trevor Heaps BSc, MICFor, RC. Arbor. A

Date: 25<sup>th</sup> October 2025

Ref: TH 5560



## Summary

It is proposed to construct six new dwellings and create a new parking area at the former St Martins Approach Car Park.

The proposals will require the removal of part of a group of trees along the side of 1 St. Martins Approach and a street tree close to the existing car park entrance.

To mitigate, about thirteen new trees will be planted within the site and funding will be provided to plant three new trees along St. Martins Approach. New screening could also be planted along the side of 1 St. Martins Approach.

Some basic tree protection measures and working methodology (in accordance with BS 5837:2012) will ensure the retained trees are not detrimentally affected during construction.

The relationship between the proposal and trees is sustainable and will not result in any unreasonable pressure to carry out inappropriate tree works.

If the proposal is implemented in accordance with the recommendations laid out in this report, neither the trees or wider landscape will be adversely affected.

This is an arboriculturally defensible scheme and there are no (arboricultural) reasons why planning consent should not be granted.

## Contents

1.0	Introduction.....	1
2.0	Instruction.....	1
3.0	Drawings provided.....	1
4.0	Report context .....	1
5.0	Statutory tree protection .....	2
6.0	Ecological constraints .....	3
7.0	The site .....	3
8.0	The soil and topography .....	3
9.0	Arboricultural Impact Assessment (AIA) and Tree Protection Methods .....	3
10.0	Conclusions.....	6
11.0	The Arboricultural Method Statement (AMS) .....	6
12.0	Arboricultural supervision.....	8
13.0	Signature .....	9
	Appendix 1 - Professional résumé.....	10
	Appendix 2 - Tree data schedule .....	11
	Appendix 3 - Tree data schedule explanatory notes.....	17
	Appendix 4a – Specifications for generic tree protective measures.....	19
	Appendix 5 – General precautions and further information .....	29
	Appendix 6 - Procedure to follow in case of damage to retained trees .....	31
	Appendix 7 - Induction form for all site personnel .....	32
	Appendix 8 - Site inspection record.....	33
	Appendix 9 - Tree Protection Plan/s.....	End of Report

## 1.0 Introduction

1.1 I am Trevor Heaps, Director of Trevor Heaps Arboricultural Consultancy Ltd. I hold a First-Class Honours Degree in Arboriculture; I am a Chartered Arboriculturist and a professional member of the Institute of Chartered Foresters; and I am also a Registered Consultant with the Arboricultural Association. Further information about my qualifications and experience is provided in Appendix 1.

### 1.2 Contact details:

Who	Name	Organisation	Details
Arboricultural Consultant	Trevor Heaps	THAC Ltd., 12 Plover Drive, Milford-on-Sea, Hampshire, SO41 0XF	Tel: 07957 763 533 <a href="mailto:trevor@trevorheaps.co.uk">trevor@trevorheaps.co.uk</a>
Client		Hunters	
London Borough of Hillingdon - LPA	Tree Officer	Civic Centre, High Street, Uxbridge, UB8 1UW	Tel: 01895 556000 E-mail: <a href="mailto:trees@hillingdon.gov.uk">trees@hillingdon.gov.uk</a>

## 2.0 Instruction

2.1 We are to survey all significant trees that could be affected by the proposed works.

2.2 We are then to prepare a report to appraise the effect these works will have on any nearby trees and the surrounding landscape.

2.3 We are then to set out recommendations for the protection of the trees during development - in accordance with British Standard 5837:2012 'Trees in relation to design, demolition and construction - Recommendations' (BS5837).

## 3.0 Drawings provided.

3.1 Proposed Site Plan – Ref. M10274 APL004 – Dated Oct 2024 – Drawn by Hunters

## 4.0 Report context

4.1 The site was surveyed by Stuart Hunt on the 21<sup>st</sup> October 2025.

4.2 The trees were surveyed from within the site at ground level. No climbed inspections were carried out and no root/soil samples were taken for analysis.

4.3 The trees were inspected based on the Visual Tree Assessment (VTA) developed by Mattheck & Breloer (The Body Language of Trees, 1994).

4.4 Tree heights, crown spreads and stem diameters were measured with a clinometer, a Disto laser measure and a diameter measuring tape respectively.

4.5 Small trees and shrubs (with stem diameters less than 75mm) were not surveyed.

4.6 This report is based on the information provided (i.e. site plans, proposed drawings, scales, measurements etc.) and observations during the site visit.

4.7 This report will support a planning application and/or an application to discharge a tree-related condition and its purpose is to assist and inform the planning process.

4.8 This report does not set out the detailed, working specifications of tree protection measures and engineering / design features, but provides sufficient detail to demonstrate the feasibility of the scheme in principle.

4.9 The report does not assess the potential influence of trees upon load-bearing soils beneath existing and proposed structures (resulting from water abstraction by trees on shrinkable soils).

## **5.0 Statutory tree protection**

5.1 According to the Council's website, none of the trees within or adjacent to this site are covered by a Tree Preservation Order (TPO); however, the property is within the Ruislip Village Conservation Area. This means that if any works are required to trees with a stem diameter of 75mm or above, then a Section 211 Notice must be served on the Council (unless the works are approved by virtue of this report being approved as part of a planning permission – but see 5.2).

5.2 Even if approved by way of this report, the Council's consent IS required for works on trees subject to a TPO / within a Conservation Area if:

- Development under a planning permission has not been commenced within the relevant time limit (i.e. the permission has 'expired');
- Only outline planning permission has been granted; or
- It is not necessary to carry out works on protected trees to implement a full planning permission.

## **6.0 Ecological constraints**

6.1 The Wildlife and Countryside Act 1981 (as amended by the Countryside and Rights of Way Act 2000) provides statutory protection to birds, bats and other species that inhabit trees.

6.2 In addition to any tree matters considered in this report, these protected animals could impose significant constraints on the use and timing of access to the site.

## **7.0 The site**

7.1 This property is situated within a leafy, residential part of Ruislip.

## **8.0 The soil and topography**

8.1 The soils at this site were determined using information provided by the British Geological Survey and observations during the site visit.

8.2 The site is level with no adverse features, and the soil texture is London Clay Formation - Clay, silt and sand. S

8.3 Given the information above, the soil has the potential of becoming compacted (which is harmful to tree roots).

## **9.0 Arboricultural Impact Assessment (AIA) and Tree Protection Methods**

9.1 The following section describes the potential effects the construction works will have on the subject trees. Mitigation measures are recommended, and this information should be read in conjunction with the supporting Tree Protection Plan (TPP).

9.2 Further information on the subject trees is provided in Appendices 2 & 3.

### **9.3 Trees to be removed to facilitate development**

9.3.1 The proposals will require the removal of part of a group of trees (G78) along the side of 1 St. Martins Approach and a street tree (Kanzan Cherry T77) close to the existing car park entrance.

9.3.2 The group of trees (consisting of Flowering Cherry, Hawthorn, Sycamore) is not particularly valuable or visible from outside the site, and the Kanzan Cherry is nearing the end of its life.

9.3.3 Neither the amenity or arboreal character of the local area will be affected by their removal. However, to mitigate, about thirteen new trees will be planted within the site and funding will be provided to plant three new trees along St. Martins Approach. New screening could also be planted along the side of 1 St. Martins Approach.

9.3.4 It is normally appropriate to deal with re-planting matters by condition or by way of a landscape plan; however, several potential re-planting locations have been shown on the TPP; and the following details can be confirmed at this stage:

- The new trees will be of standard size (about 2-3m high)
- The new tree species will be carefully chosen to suit the site conditions and reflect the existing arboreal character of the local area
- The new trees will be planted in full accordance with current British Standards (BS 8545: From Nursery to Independence in the Landscape);
- Once planted, the trees will be regularly maintained (watered and weeded during the spring and summer months) for at least 5 years or until established.

#### **9.4 Physical damage to stems of retained trees**

9.4.1 There is a risk that the crowns and stems of some of the retained trees could be accidentally damaged during development.

9.4.2 To minimise this risk, protective fencing will be erected in front of their stems and, where space allows, along their canopy extents.

#### **9.5 Soil compaction around retained trees**

9.5.1 Soil compaction can be caused by various construction-related activities such as storage or materials and the use of heavy machinery (or even heavier than normal pedestrian access during works). It is harmful to tree roots because it reduces gaseous exchange and the availability of water and nutrients.

9.5.2 To avoid the soil becoming unnecessarily compacted, all vulnerable areas will be separated from the working area by protective fencing or will be covered with ground protection.

9.5.3 The existing hard surfaces will provide ample protection for any roots growing beneath and so do not need reinforcing.

## **9.6 Potential conflict with low branches of retained trees**

9.6.1 The lower lateral branches of some of the retained trees along the car park boundaries are potentially vulnerable to damage during construction.

9.6.2 To reduce the risk of accidental damage to acceptable levels, the lateral branches on the vulnerable sides of the crowns will be crown lifted to 3m improve clearance.

9.6.3 The proposed pruning is minor, targeted and will not affect the health or appearance of the trees.

## **9.7 Underground services**

9.7.1 The proposals will be designed in such a way as to either connect directly to existing underground services (with no further excavations) or be connected to existing services using a route outside the RPAs of trees shown retained.

9.7.2 If existing services within RPAs require upgrading, care shall be taken to minimise disturbance and where practicable, trenchless techniques employed; only as a last resort should open excavations be considered. Where existing services within RPAs are deemed not satisfactory for any further use, they should be left in situ rather than being excavated or removed.

9.7.3 If, for whatever reason, the proposed services need to be moved (and incursions into RPAs are unavoidable), then the installation works will be carried out under full arboricultural supervision and will, at the very least, comply with the methods and guidelines detailed in the National Joint Utilities Group publication NJUG 4, Guidelines for the Planning, Installation, and Maintenance of Utility Services in Proximity to Trees (November 2007).



## **10.0 Conclusions**

10.1 The proposals will require the removal of part of a group of trees along the side of 1 St. Martins Approach and a street tree close to the existing car park entrance.

10.2 To mitigate, about thirteen new trees will be planted within the site and funding will be provided to plant three new trees along St. Martins Approach. New screening could also be planted along the side of 1 St. Martins Approach.

10.3 The retained / third-party trees will be protected using up-to-date methodology and guidance provided by the current British Standards (BS 58378:2012). To this end, a site-specific AMS and TPP have been provided. These are found in Section 11 and Appendix 9 respectively.

10.4 Provided the recommendations laid out in this report are followed, the proposals will not detrimentally affect the trees and, with a well thought out tree planting and landscaping scheme, will improve and enhance the character, appearance and biodiversity of the local area.

10.5 The trees do not cause any significant conflicts in terms of construction activities, nor will any significant issues of post-development pressure be likely to emerge that could not be managed with routine, minor tree maintenance.

## **11.0 The Arboricultural Method Statement (AMS)**

11.1 Effective tree protection relies on following a logical sequence of events and arboricultural supervision. This AMS lays down the methodology for all construction works that may influence significant trees and recommendations for arboricultural supervision are provided in Section 12.

11.2 It is essential that this AMS is observed and adhered to. Therefore, a copy of this AMS must be issued to the building contractor to be integrated into their work schedule and must also be permanently made available on-site for the duration of development.

11.3 This AMS should be read in conjunction with the supporting Tree Protection Plan (TPP), which is found in Appendix 9.

11.4 At this site, operations are to occur in the following sequence (refer to Appendix 4 for further details on underlined methodology; which are listed in alphabetical order):

1. Carry out tree work operations **highlighted yellow** in the tree data schedule (Appendix 2). All tree works are to be carried out by a competent and experienced arborist to current British Standards (see Appendix 5.9 for assistance finding a suitable arborist).
2. Erect protective fencing along the position(s) shown by the dashed red line/s on the TPP.
3. Retain all existing hard surfaces as shown by the sandy coloured squares on the TPP.
4. Provide a photographic record of all tree protection to arboricultural consultant – this will be forwarded to and approved by the Council's Arboricultural Officer and must demonstrate that all aspects of tree and ground protection measures have been implemented in accordance with this Arboricultural Report. The tree protection measures shall be retained until completion of all works permitted.
5. Commence construction.
6. Remove tree protection when all construction activity has ended.
7. Carry out tree planting and any other landscaping works.

## 12.0 Arboricultural supervision

12.1 A suitably-qualified arboriculturalist will provide on-going supervision during construction. The occasions when supervision is required are outlined in Table 2. If the LPA wish to see further supervision, this matter can be dealt with by amending the report and/or by condition.

**Table 2:** Indicative arboricultural supervision requirements

Supervision details	Required (Y / N)	When	Details	Nature	Sign off
Meeting with tree contractors	N	Prior to protective measures being installed	To ensure tree work instructions are clear and understood.	Informal meeting	No follow up required
Pre-commencement site meeting	N	Prior to any site activity	To ensure contractors are briefed & understand the AMS & TPP. A site supervisor will be appointed to oversee tree protection & the reporting of any damage to trees or deviation from the AMS - to the project arboriculturalist / LPA	Informal and open discussions. Induction form signed by attendees	Details of meeting to be sent to LPA within 5 days
Protective measure check	Y	Prior to any site activity	To ensure that protective measures are fit-for-purpose and correctly positioned.	Photos to be provided to consultant	Details of to be sent to LPA within 5 days
On-going supervision	N	Every 2 weeks during construction	To ensure that the protective measures have not been moved and continue to be fit-for-purpose.	Site meeting with a site monitoring report to be prepared	Details of to be sent to LPA within 5 days
Supervision of excavation works near trees	N	During construction	To supervise key stages of works near trees (insert which / when)	Site meeting with a site monitoring report to be prepared	Details of to be sent to LPA within 5 days
Meeting with landscape contractors	N	After construction	To provide advice on tree / shrub selection (if not conditioned)	Informal meeting	No follow up required

12.2 A site inspection record (see Appendix 8) will be prepared after each visit and will state the condition of tree protection measures and outline any required remedial action (and timescales).

12.3 To demonstrate compliance, and to help the LPA discharge relevant planning conditions, all site monitoring reports will be forwarded to the LPAs arboricultural officer within 5 working days of the visit.

12.4 NOTE: It is the applicant's responsibility to arrange meeting dates with the arboriculturalist.

### 13.0 Signature

This report represents a true and factual account of the potential arboricultural impacts, and makes recommendations for appropriate protective measures, at the subject property.

#### Signed



.....

#### Trevor Heaps

Chartered Arboriculturist

BSc, MICFor, RC. Arbor. A

#### Dated

25<sup>th</sup> October 2025

## **Appendix 1 - Professional résumé**

I am Trevor Heaps, Director of Trevor Heaps Arboricultural Consultancy Ltd.

I hold a First-Class Honours Degree and a Foundation Degree in Arboriculture; I am a Chartered Arboriculturist and a professional member of the Institute of Chartered Foresters; I am also a Registered Consultant with the Arboricultural Association.

I have worked within the Arboricultural industry since 1995 and have extensive experience of working as a tree surgeon (arborist), tree officer, TPO officer and consultant.

### **Professional training**

- Arboriculture and Bats: Scoping Surveys for Arborists (BCT & AA) – October 2017
- Tree Science (AA) – June 2016
- OPM (Oak Processionary Moth) Training (FC) – May 2016
- Visual Tree Assessment (Arboricultural Association) - October 2015
- Trees and the Law (Dr Charles Mynors) - June 2015
- Mortgage (Home Buyers) Report Writing (LANTRA / CAS) - February 2015
- Tree Preservation Orders - effective application (LANTRA / CAS) - November 2014
- Professional Tree Inspection 3-day course (LANTRA / AA) - July 2014
- Arboricultural Consultancy Course (AA) - May 2014
- Further down the subsidence trail 1-day course (AA) - April 2013
- Getting to grips with subsidence 1-day course (AA) - November 2012

AA – Arboricultural Association

BCT – Bat Conservation Trust

CAS – Consulting Arborist Society

FC – Forestry Commission

## Appendix 2 - Tree data schedule

Ref	Name	Age	DBH (mm)	Hgt. (m)	Can. hgt. (m)	Can N (m)	Can E (m)	Can S (m)	Can W (m)	Physio cond.	Struct cond.	Life Exp.	Ret. Cat.	Comments	Rec's (proposed works are highlighted)
T1	Betula pendula (Silver Birch)	M	580	10	2.5	4	4	4	4	Normal	Fair	20+	B2	Die-back in crown.	
T2	Acer palmatum (Japanese Maple)	EM	150	3	1.5	2	2	2	2	Normal	Normal	40+	B2	Strimmer damage	
T3	Betula pendula (Silver Birch)	M	370	10	2.5	3	3	3	3	Normal	Normal	40+	B2	Die-back in crown.	
T4	Betula pendula (Silver Birch)	M	170	10	2.5	1.5	1.5	1.5	1.5	Normal	Normal	40+	B2		
T5	Taxus baccata (Yew)	M	400	7	1.5	2.5	2.5	2.5	2.5	Normal	Normal	40+	B2	Growing on third-party land (dbh estimated).	
T6	Quercus robur (Common Oak)	M	450	12	2.5	7	7	5	5	Normal	Normal	40+	A2	Growing on third-party land (dbh estimated).	
T7	Liriodendron tulipifera (Tulip Tree)	M	400	15	2.5	4	4	4	4	Normal	Fair	20+	B2	Growing on third-party land (dbh estimated).	
T8	Prunus avium (Wild Cherry)	M	150	6	2	2	2	2	2	Normal	Fair	40+	C2	Twin-stemmed at base.	
T9	Chamaecyparis lawsoniana (Lawson Cypress)	M	300	10	2	2	2	2	2	Normal	Normal	40+	B2	Growing on third-party land (dbh estimated).	
T10	Chamaecyparis lawsoniana (Lawson Cypress)	M	150	10	2	2	2	2	2	Normal	Normal	40+	B2	Growing on third-party land (dbh estimated).	
T11	Chamaecyparis lawsoniana (Lawson Cypress)	M	250	10	2	2	2	2	2	Normal	Normal	40+	B2	Growing on third-party land (dbh estimated).	
T12	Taxus baccata (Yew)	M	150	5	0	2	2	2	2	Normal	Normal	40+	B2		
T13	Chamaecyparis lawsoniana (Lawson Cypress)	EM	100	7	0	1.5	1.5	1.5	1.5	Fair	Normal	20+	C2	Suppressed due to growth from nearby trees.	
T14	Sequoiadendron giganteum (Wellingtonia)	M	1390	20	2.5	3.5	3.5	3.5	3.5	Normal	Normal	40+	A2		

Ref	Name	Age	DBH (mm)	Hgt. (m)	Can. hgt. (m)	Can N (m)	Can E (m)	Can S (m)	Can W (m)	Physio cond.	Struct cond.	Life Exp.	Ret. Cat.	Comments	Rec's (proposed works are highlighted)
T15	Taxus baccata (Yew)	M	150	5	0	2	2	2	2	Normal	Normal	40+	B2		
T16	Taxus baccata (Yew)	M	150	5	0	2	2	2	2	Normal	Normal	40+	B2		
T17	Taxus baccata (Yew)	M	150	5	0	2	2	2	2	Normal	Normal	40+	B2	Pruned (badly) in past.	
T18	Taxus baccata (Yew)	M	200	5	0	2	2	2	2	Normal	Normal	40+	B2	Pruned (badly) in past.	
T19	Fraxinus excelsior (Ash)	M	500	10	3	5	5	9	5	Normal	Normal	40+	B2		
T20	Quercus robur (Common Oak)	M	400	12	3	5	5	7	5	Normal	Normal	40+	B2		
T21	Quercus robur (Common Oak)	M	400	12	3	5	5	7	5	Normal	Normal	40+	B2		
T22	Quercus robur (Common Oak)	M	400	12	3	5	5	7	5	Normal	Normal	40+	B2		
T23	Quercus robur (Common Oak)	M	400	12	3	5	5	7	5	Normal	Normal	40+	B2		
T24	Quercus rubra (Red Oak)	M	920	14	2.5	9	9	9	9	Normal	Normal	40+	A2		
T25	Quercus rubra (Red Oak)	M	450	12	2.5	4	4	4	4	Normal	Normal	40+	B2	Linear group of trees.	
T26	Quercus rubra (Red Oak)	M	640	12	2.5	4	4	4	4	Normal	Normal	40+	B2	Linear group of trees.	
T27	Quercus rubra (Red Oak)	M	490	12	2.5	4	4	4	4	Normal	Normal	40+	B2	Linear group of trees.	
T28	Quercus rubra (Red Oak)	M	490	12	2.5	4	4	4	4	Normal	Normal	40+	B2	Linear group of trees.	
T29	Quercus rubra (Red Oak)	M	490	12	2.5	4	4	4	4	Normal	Normal	40+	B2	Linear group of trees.	

Ref	Name	Age	DBH (mm)	Hgt. (m)	Can. hgt. (m)	Can N (m)	Can E (m)	Can S (m)	Can W (m)	Physio cond.	Struct cond.	Life Exp.	Ret. Cat.	Comments	Rec's (proposed works are highlighted)
T30	Quercus rubra (Red Oak)	M	490	12	2.5	4	4	4	4	Normal	Normal	40+	B2	Linear group of trees.	
T31	Quercus robur (Common Oak)	M	860	14	2.5	9	9	9	9	Fair	Normal	40+	B2	Sparser than would be expected.. Die-back in crown.	
T32	Quercus rubra (Red Oak)	M	250	9	2	3	3	3	3	Fair	Fair	20+	C2	Suppressed due to growth from nearby trees. Asymmetrical crown due to growth of nearby tree now removed.	
T33	Quercus rubra (Red Oak)	M	490	12	2.5	4	4	4	4	Normal	Normal	40+	A2	Suppressed due to growth from nearby trees.	
G34	Chamaecyparis lawsoniana (Lawson Cypress)	M	300	12	0	2	2	2	2	Normal	Normal	40+	B2		
T35	Quercus rubra (Red Oak)	M	770	14	2.5	4	4	4	4	Normal	Normal	40+	B2	Die-back in crown.	
T36	Salix X chrysocoma (Weeping Willow)	M	650	14	2	3	6	6	6	Normal	Normal	40+	B2	Old pruning wounds noted (sealing).	
T37	Carpinus betulus (Hornbeam)	M	460	10	1.5	3.5	3.5	3.5	3.5	Normal	Normal	40+	A2		
T38	Crataegus monogyna (Hawthorn)	M	270	8	2	2	2	2	2	Normal	Normal	40+	B2		
T39	Thuja plicata (Western Red Cedar)	M	380	10	2	2.5	2.5	2.5	2.5	Normal	Fair	20+	B2		
T40	Salix X chrysocoma (Weeping Willow)	M	650	14	2	6	6	6	6	Normal	Normal	40+	B2	Lapsed pollard. Old pruning wounds noted (sealing).	
T41	Acer pseudoplatanus (Sycamore)	EM	320	9	2	2.5	2.5	2.5	2.5	Fair	Fair	20+	C2	Pruned (badly) in past. Old pruning wounds noted (sealing). Tight forks noted.	
T42	Thuja plicata (Western Red Cedar)	M	450	10	0	3	3	3	3	Normal	Normal	40+	B2		



Ref	Name	Age	DBH (mm)	Hgt. (m)	Can. hgt. (m)	Can N (m)	Can E (m)	Can S (m)	Can W (m)	Physio cond.	Struct cond.	Life Exp.	Ret. Cat.	Comments	Rec's (proposed works are highlighted)
T43	Quercus robur (Common Oak)	M	250	6	2	1.5	5	5	5	Normal	Normal	40+	B2		
T44	Prunus cerasifera 'Pissardii' (Purple-leaved Plum)	M	300	6	2	2.5	2.5	2.5	2.5	Fair	Fair	20+	C2	Suppressed due to growth from nearby trees. Die-back in crown.	
T45	Acer saccharinum (Silver Maple)	M	400	10	2	5	5	5	5	Normal	Normal	40+	B2		
T46	Parrotia persica (Persian Ironwood)	M	250	6	1.5	3	3	3	3	Normal	Normal	40+	B2		
G47	Calocedrus decurrens (Incense Cedar)	M	250	8	0	2.5	2.5	2.5	2.5	Normal	Normal	40+	B2		
G48	Thuja plicata (Western Red Cedar)	M	300	8	0	3	3	3	3	Fair	Normal	20+	B2	Die-back in crown.	
T49	Thuja plicata (Western Red Cedar)	D	100	6	0	0.5	0.5	0.5	0.5	Dead	Dead	<10	U		
T50	Thuja plicata (Western Red Cedar)	M	350	8	0	3	3	3	3	Normal	Normal	40+	B2		
T51	Thuja plicata (Western Red Cedar)	D	100	6	0	0.5	0.5	0.5	0.5	Dead	Dead	<10	U		
T52	Tilia platyphyllos (Large-leaved Lime)	M	360	8	1.5	3.5	3.5	3.5	3.5	Normal	Normal	40+	B2		
T53	Fraxinus excelsior (Ash)	M	370	10	2.5	4.5	4.5	4.5	4.5	Normal	Normal	40+	A2		
T54	Carpinus betulus (Hornbeam)	EM	180	6	1.5	1.5	1.5	1.5	1.5	Normal	Normal	40+	B2		
T55	Carpinus betulus (Hornbeam)	EM	200	6	1.5	1.5	1.5	1.5	1.5	Normal	Normal	40+	B2		
T56	Prunus sps. (Flowering Cherry)	Y	50	3	1	0.5	0.5	0.5	0.5	Normal	Normal	40+	C2		
H57	Taxus baccata (Yew), Crataegus monogyna (Hawthorn)	M	100	1.5	0	0.5	0.5	0.5	0.5	Normal	Normal	40+	C2	Clipped hedge.	

Ref	Name	Age	DBH (mm)	Hgt. (m)	Can. hgt. (m)	Can N (m)	Can E (m)	Can S (m)	Can W (m)	Physio cond.	Struct cond.	Life Exp.	Ret. Cat.	Comments	Rec's (proposed works are highlighted)
T58	Fagus sylvatica (Beech)	M	250	8	1.5	2.5	2.5	2.5	2.5	Normal	Normal	40+	B2		
H59	Crataegus monogyna (Hawthorn)	M	50	1.5	0	0.5	0.5	0.5	0.5	Normal	Normal	40+	C2	Clipped hedge.	
T60	Tilia platyphyllos (Large-leaved Lime)	M	400	12	2	6	6	3	6	Normal	Normal	40+	A2		Crown lift to 3m.
T61	Platanus X hispanica (London Plane)	M	650	14	2	4	8	8	8	Normal	Normal	40+	A2		Crown lift to 3m.
T62	Carpinus betulus (Hornbeam)	EM	180	6	2	1.5	3	3	3	Normal	Fair	40+	C2	Suppressed due to growth from nearby trees.	
H63	Taxus baccata (Yew)	M	100	1.5	0	0.5	0.5	0.5	0.5	Normal	Normal	40+	C2		
H64	Taxus baccata (Yew)	M	200	6	0	1	1	1	1	Normal	Normal	40+	B2		
T65	Carpinus betulus (Hornbeam)	M	400	12	2	4.5	4.5	4.5	4.5	Normal	Normal	40+	B2		Crown lift to 3m.
T66	Acer pseudoplatanus (Sycamore)	M	480	14	2	5	5	5	5	Normal	Normal	40+	B2		Crown lift to 3m.
T67	Prunus sps. (Flowering Cherry)	M	220	5	1.5	3	3	3	3	Fair	Fair	10+	C2	Die-back in crown. Deadwood noted.	
T68	Fraxinus excelsior (Ash)	M	350	12	3	2.5	2.5	2.5	2.5	Normal	Normal	40+	B2		
T69	Acer pseudoplatanus (Sycamore)	M	350	12	3	3	3	3	3	Normal	Normal	40+	B2		
T70	Acer pseudoplatanus (Sycamore)	M	350	12	3	3	3	3	3	Normal	Normal	40+	B2		
H71	Taxus baccata (Yew)	M	70	2	0	1	1	1	1	Normal	Normal	40+	C2	Finely clipped hedge.	
T72	Prunus sps. (Flowering Cherry)	Y	50	3	1	0.5	0.5	0.5	0.5	Normal	Normal	40+	C2		

Ref	Name	Age	DBH (mm)	Hgt. (m)	Can. hgt. (m)	Can N (m)	Can E (m)	Can S (m)	Can W (m)	Physio cond.	Struct cond.	Life Exp.	Ret. Cat.	Comments	Rec's (proposed works are highlighted)
T73	Betula pendula (Silver Birch)	SM	70	4	1.5	0.5	0.5	0.5	0.5	Normal	Normal	40+	C2		
T74	Sorbus aria (Whitebeam)	EM	100	3	1.5	0.5	0.5	0.5	0.5	Normal	Normal	40+	C2		
T75	Sorbus aria (Whitebeam)	EM	150	3	1.5	1.5	1.5	1.5	1.5	Normal	Normal	40+	C2		
T76	Prunus sps. (Flowering Cherry)	EM	150	4	1	1.5	1.5	1.5	1.5	Normal	Normal	40+	C2	Highway tree	
T77	Prunus serrulata 'Kanzan' (Kanzan Cherry)	M	400	4	1.5	3	3	3	3	Fair	Fair	20+	C2	Highway tree Sparse. Die-back in crown.	Remove (to facilitate development).
G78	Prunus sps. (Flowering Cherry), Crataegus monogyna (Hawthorn), Acer pseudoplatanus (Sycamore)	EM	100	3	0	1	1	1	1	Fair	Fair	40+	C2	Outgrown boundary hedge.	Remove eastern section, as shown on the TPP

### Appendix 3 - Tree data schedule explanatory notes

This section explains the terms used in the **Tree data schedule** (Appendix 2).

**Ref:** Each item of vegetation has its own unique number, prefixed by a letter such that:

**T**<sub>1</sub>=Tree                **S**<sub>2</sub>=Shrub or stump                **G**<sub>3</sub>=Group                **H**<sub>4</sub>=Hedge                **W**<sub>5</sub>=Woodland

**Species:** Latin (and common names in brackets) are given.

**Age:**

- **Y - Young** - Usually less than 10 years' old
- **SM - Semi-mature** - Significant future growth to be expected, both in height and crown spread (typically below 30% of life expectancy)
- **EM - Early-mature** - Full height almost attained. Significant growth may be expected in terms of crown spread (typically 30-60% of life expectancy)
- **M - Mature** - Full height attained. Crown spread will increase but growth increments will be slight (typically 60% or more of life expectancy)
- **V - Veteran** - A level of maturity whereby significant management may be required to keep the tree in a safe condition
- **OM - Over-mature** - As for veteran except management is not considered worthwhile

**DBH (mm):** Stem diameter, measured in mm, taken at 1.5m above ground level where possible.

**Hgt. (m): Height:** Measured from ground level to the top of the crown in metres.

**Can Hgt. (m): Crown height:** Measured from ground level to the lowest tips of the main crown begins in metres. Where the crown is unbalanced it is measured on the side deemed to be most relevant. This is usually the side facing the area of anticipated development.

**Can N, S, E, W: - Canopy extents**

Approximate radial crown spread measured to the four cardinal points (for individual trees only)

**Physio cond.:** Indicates the physiological condition of the tree as one of the following categories:

- **Normal** - Healthy tree with no symptoms of significant disease
- **Fair** - Tree with early signs of disease, small defects, decreased life expectancy, or evidence of less-than-average vigour for the species
- **Poor** - Significant disease present, limited life expectancy, or with very low vigour for the species and evidence of physiological stress
- **Very poor** - Tree is in advanced stages of physiological failure and is dying
- **Dead** - No leaves or signs of life

**Struct cond.:** Indicates the structural condition of the tree as one of the following categories:

- **Normal** - No significant structural defects noted
- **Fair** - Some structural defects noted but remedial action not required at present
- **Poor** - Significant defects noted resulting in a tree that requires regular monitoring or remedial action
- **Very poor** - Major defects noted that compromise the safety of the tree. Remedial works or tree removal is likely to be required.
- **Dead** - No leaves or signs of life

**Life Exp.:** The estimated number of years before the tree may require removal (<10), (10 – 20), (20 – 40), or (40+).

**Ret. Cat.:** - **Retention category:** BS5837:2012 Category where:

- **U = Trees unsuitable for retention.** Trees in such a condition that cannot realistically be retained as living trees in the context of the current land use for longer than 10 years. These trees are shown on the tree plans with red centres.
- **A = Trees of high quality.** Trees of high quality with an estimated remaining life expectancy of at least 40 years. These trees are shown on the tree plans with green centres.
- **B = Trees of moderate quality.** Trees of moderate quality with an estimated remaining life expectancy of at least 20 years. These trees are shown on the tree plans with blue centres.
- **C = Trees of low quality.** Trees of low quality with an estimated remaining life expectancy of at least 10 years, or young trees with a stem diameter below 150mm. These trees are shown on the tree plans with grey centres.

Trees of notable quality are graded as Category A or Category B. These trees are sometimes divided further into sub-categories:

- Sub-category 1 is allocated where it has been assessed that the tree has mainly arboricultural qualities.
- Sub-category 2 is allocated where it is assessed that the tree has mainly landscape qualities.
- Subcategory 3 is allocated where it is assessed that the tree has mainly cultural qualities, including conservation.

Trees may be allocated more than one sub-category. All sub-categories carry equal weight, with for example an A<sub>3</sub> tree being of the same importance and priority as an A<sub>1</sub> tree.

**Comments:** Tree form and pruning history are also recorded along with an account of any significant defects.

**Rec's - Recommendations:** Usually based on any defects observed and intended to ensure that the tree is in an acceptable condition.

## Appendix 4a – Specifications for generic tree protective measures

### **Ground Protection (IF NEEDED)**

The following *italicised* text is based on an extract from British Standard 5837:2012 - Trees in relation to design, demolition and construction– Recommendations.

*Temporary ground protection should be able to support any traffic entering or using the site without being distorted or causing compaction of underlying soil and might comprise one of the following:*

*a) for pedestrian-movements only, a single thickness of scaffold boards placed either on top of a driven scaffold frame, to form a suspended walkway, or on top of a compression-resistant layer (e.g. 100 mm depth of woodchip), laid onto a geotextile membrane;*

*b) for pedestrian-operated plant up to a gross weight of 2 t, proprietary, inter-linked ground protection boards placed on top of a compression-resistant layer (e.g. 150 mm depth of woodchip), laid onto a geotextile membrane;*

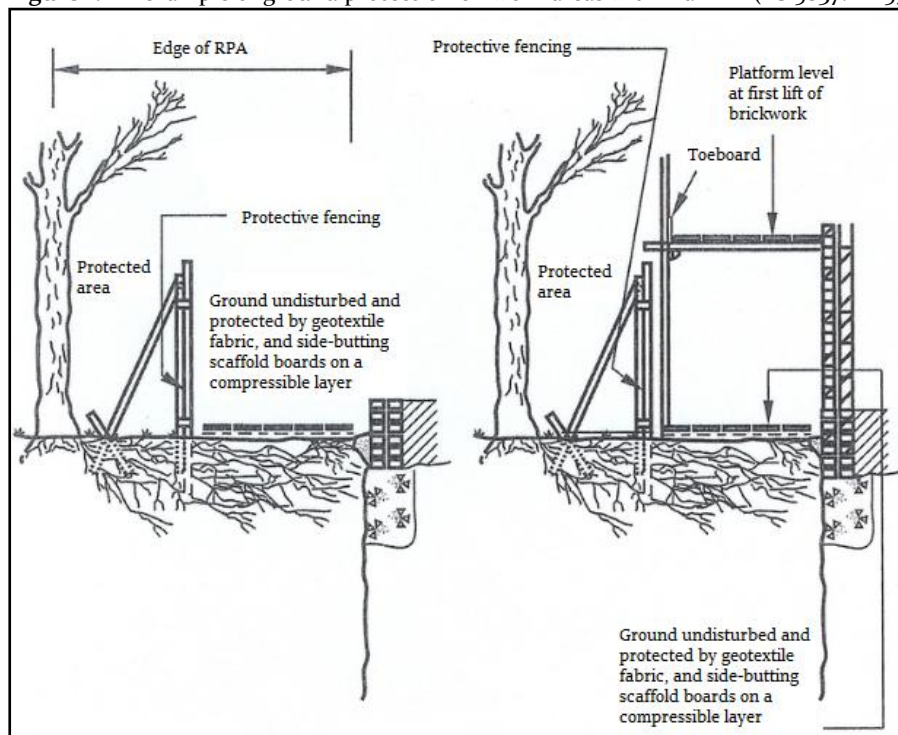
*c) for wheeled or tracked construction traffic exceeding 2 t gross weight, an alternative system (e.g. proprietary systems or pre-cast reinforced concrete slabs) to an engineering specification designed in conjunction with arboricultural advice, to accommodate the likely loading to which it will be subjected.*

The location of the temporary ground protection is shown on the tree protection plan and detailed within the arboricultural method statement.

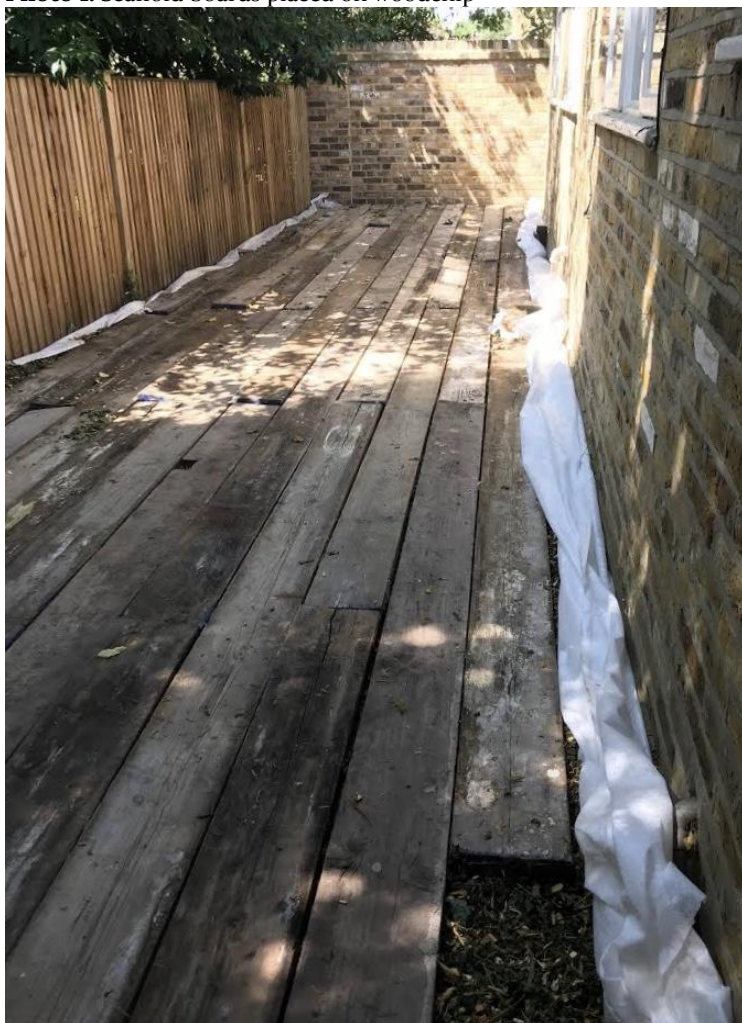
In all cases, the objective will be to avoid the unnecessary compaction of soil (which can arise from a single passage of a heavy vehicle, especially in wet conditions) so that tree root functions remain unimpaired.

All ground protection is to be maintained in good order, so it is fit for purpose throughout development. The ground protection will not be altered in any way, or prematurely removed without prior consent of the project arboriculturist or the LPA arboricultural officer.

**Figure 1:** An example of ground protection on work areas within a RPA (BS 5837:2005).



**Photo 1.** Scaffold boards placed on woodchip





**Photo 2.** An example of heavy-duty ground protection.



**Photo 2** Scaffold framework supporting wooden boards



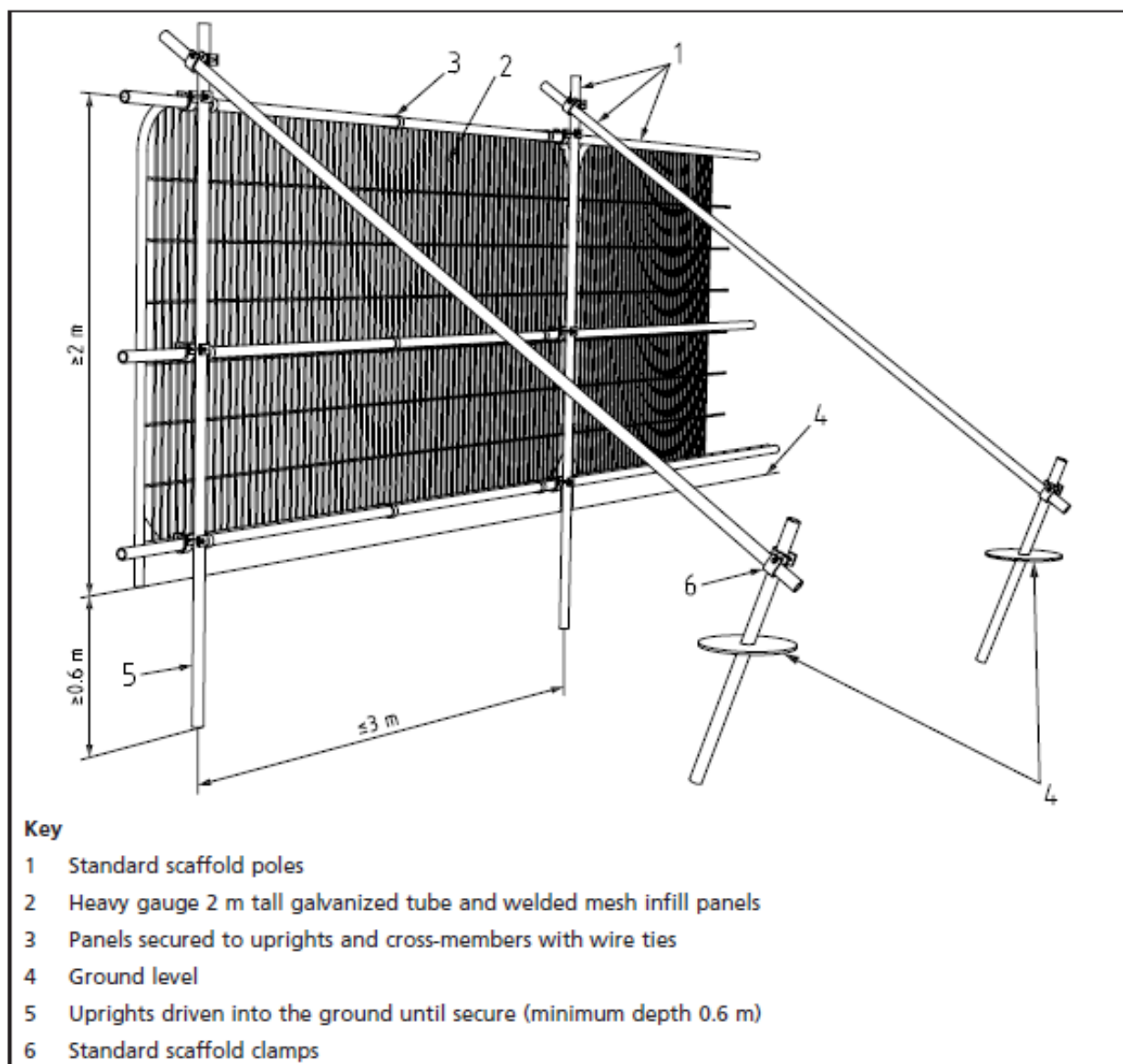


## **Protective fencing**

The following is based on an extract from British Standard 5837:2012 - Trees in relation to design, demolition and construction- Recommendations.

The framework support (shown in Figure 2 and photo 1) is the usual method of support for 'Heras' fencing. Some variations are possible if site conditions are appropriate; i.e. support by wooden posts (75mm x 75mm x 2.75m) dug or concreted into the ground (dry mix concrete contained within a plastic bag), or if there is no pressure for access, a lighter form of netting on stakes.

**Figure 2:** Default specification for protective barrier (BS 5837:2012)



**Photo 1:** A worked example of the default specification for protective barrier (BS 837:2012)



Durable, all-weather signs are to be attached to the fencing (an example sign is provided below). These shall be printed, laminated and attached at regular intervals along the fencing.

Once erected, the protective fencing is to be regarded as sacrosanct and there is to be no access into the area protected by it - the construction exclusion zone (CEZ).

The protective fencing is to be maintained in good order, so it is fit for purpose throughout the construction process. The fencing will not be altered in any way, or prematurely removed without prior consent of the project arboriculturist and/or (if necessary) the LPA arboricultural officer.

Where specified in the AMS, the tree(s) stem/s shall be boxed off with wooden ply boards or wrapped in hessian and chestnut pale fencing / trunk protection (see example below). This will help avoid any direct damage to tree stems from passing machinery (see photo 2).



**Photo 2:** Trees protected by hessian & chestnut pale fencing / limbs protected by wooden boxing



Photo 2. <https://greengridsystems.com/products/trunk-protecta>



# TREE PROTECTION FENCING

## KEEP OUT

This fencing must not be removed  
or altered in any way without prior  
consultation with the project  
arboriculturist!

Please report any damage to trees  
and/or fencing to the site manager  
or the project arboriculturist

Trevor Heaps

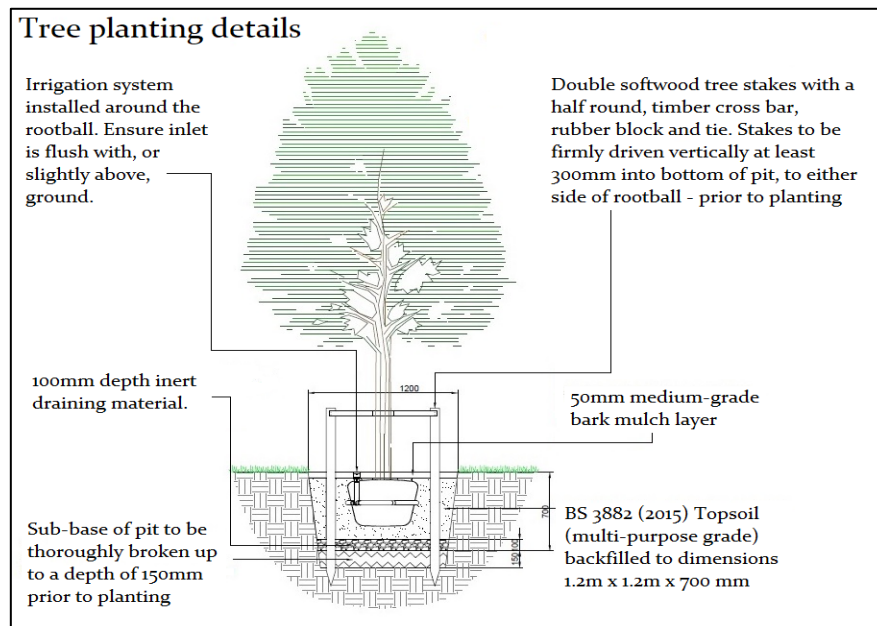
07957 763 53

### **Soft landscaping within or close to the Root Protection Areas (RPAs) of retained trees**

The following precautions are necessary to avoid damage to trees (where activities are to take place within their RPAs):

- Ground levels will not be changed;
- Soil must be of good quality and free of contaminants and other foreign objects potentially injurious to tree roots. The topsoil must satisfy the requirements of BS3882:200;
- No heavy machinery will be operated within the RPAs of retained trees during the installation of soft landscaping;
- Unwanted vegetation shall be removed manually or by using systemic herbicide that will not damage tree roots;
- No fuels or chemicals shall be used or stored within these areas; and
- No irrigation or drainage pipes shall be installed within the RPAs

## **Tree planting**



All tree planting operations shall be carried out in accordance with BS 8545:2014 Trees: from nursery to independence in the landscape Recommendations.

All planting stock shall comply with the requirements of BS 3936 and shall be healthy, strong with a good shape and strong root system (in accordance with the national plant specification). All native plants shall be of local provenance and be well-labelled as such.

Trees shall only be lifted from the ground between October and March and be handled and transported in accordance with the relevant codes of practice, with the roots kept moist and wrapped (in hessian for example) to protect them from adverse weather conditions.

All new trees are to be maintained until established. A 1 metre diameter area surrounding the tree will be kept free from grass, weeds and rubbish at all times. Mulched areas will be topped up as necessary to maintain 75mm depth.

Newly-planted trees are to be watered during April to September. The intervals between watering is to be fortnightly with additional visits if there has been no rainfall within a weekly period. If needed, watering bags will be filled with 90 Litres of water (for slow release) per visit. Any depressed or panned-down areas will be lightly forked.

Each tree will be checked to make sure it is healthy before planting. All dead, damaged, crossing or diseased branches will be removed. Any arising suckers will be removed from the clear stem. Any wounds shall be neatly pared back to sound wood in accordance with BS 3998. Trees which have been loosened by the wind or frost shall be re-firmed.

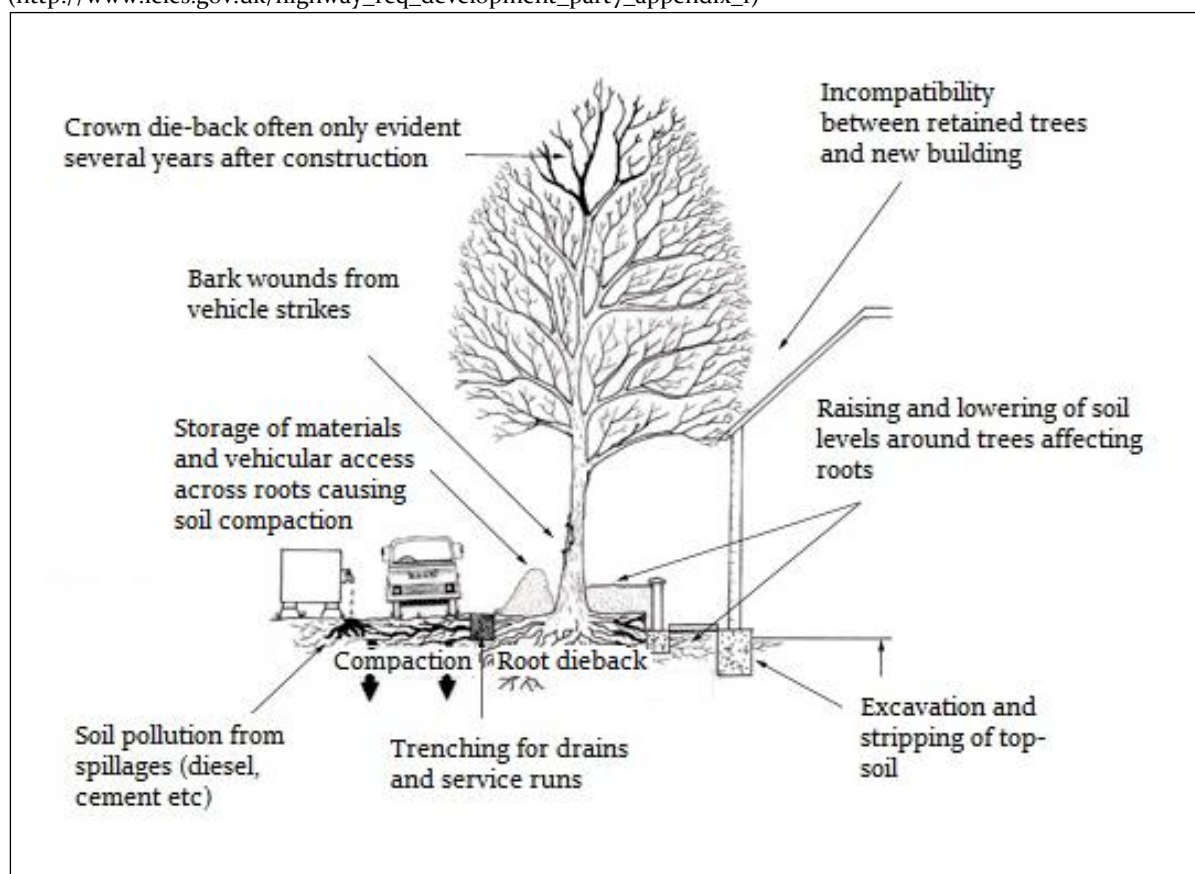
Each stake and tie will be checked and adjusted, re-fixed or renewed as necessary to ensure that no damage occurs to any tree and that each tree is being supporting in the intended manner. All stakes and ties will be removed after two years / or after trees have rooted successfully.

Any tree or plant that fails to thrive or is below specification within a five-year period shall be replaced.



## Appendix 5 – General precautions and further information

**Figure 4:** Common problems for trees on development sites  
([http://www.leics.gov.uk/highway\\_req\\_development\\_part7\\_appendix\\_f](http://www.leics.gov.uk/highway_req_development_part7_appendix_f))



**5.1 Services and drainage:** Surface run-off water shall be sent to existing drains and/or soakaways located outside the RPAs of retained tree(s). If trenching is required within the RPA of retained trees to provide routes for services, this work shall be undertaken using mole boring and / or hand digging (under arboricultural supervision).

**5.2 Storage of materials:** No materials or spoil are to be stored within areas protected by protective fencing and/or ground protection. The same applies for existing hard surfaces that are being used as ground protection.

**5.3 Spillages:** If any cement residues fall within root protection areas, it shall be swept up, bagged and removed from site – it shall not be washed away with water.

**5.4 Demolition:** Where any existing structures are to be demolished, they will be done so inwardly (away from root protection areas / retained soil).



**5.5 Levels:** There is to be no alteration of ground levels within the area protected by protective fencing and/or ground protection, unless previously specified and agreed upon. The same applies for existing hard surfaces that are being used as ground protection.

**5.6 Fires:** No fires are to be lit within 20 metres of the stems of retained trees.

**5.7 Above ground damage to trees:** Care must be taken in planning the location and operation of machinery to avoid above ground damage to trees. BS5837 (2012) Section 6.2.4.1 states *'Planning of site operations should take sufficient account of wide loads, tall loads and plant with booms, jibs and counterweights (including drilling rigs) in order that they can operate without contacting retained trees. Such contact can result in serious damage to trees and might make their safe retention impossible. Consequently, any transit or traverse of plant in proximity to trees should be conducted under the supervision of a banksman, to ensure that adequate clearance of trees is always maintained. Access facilitation pruning should be undertaken where necessary to maintain this clearance.'*

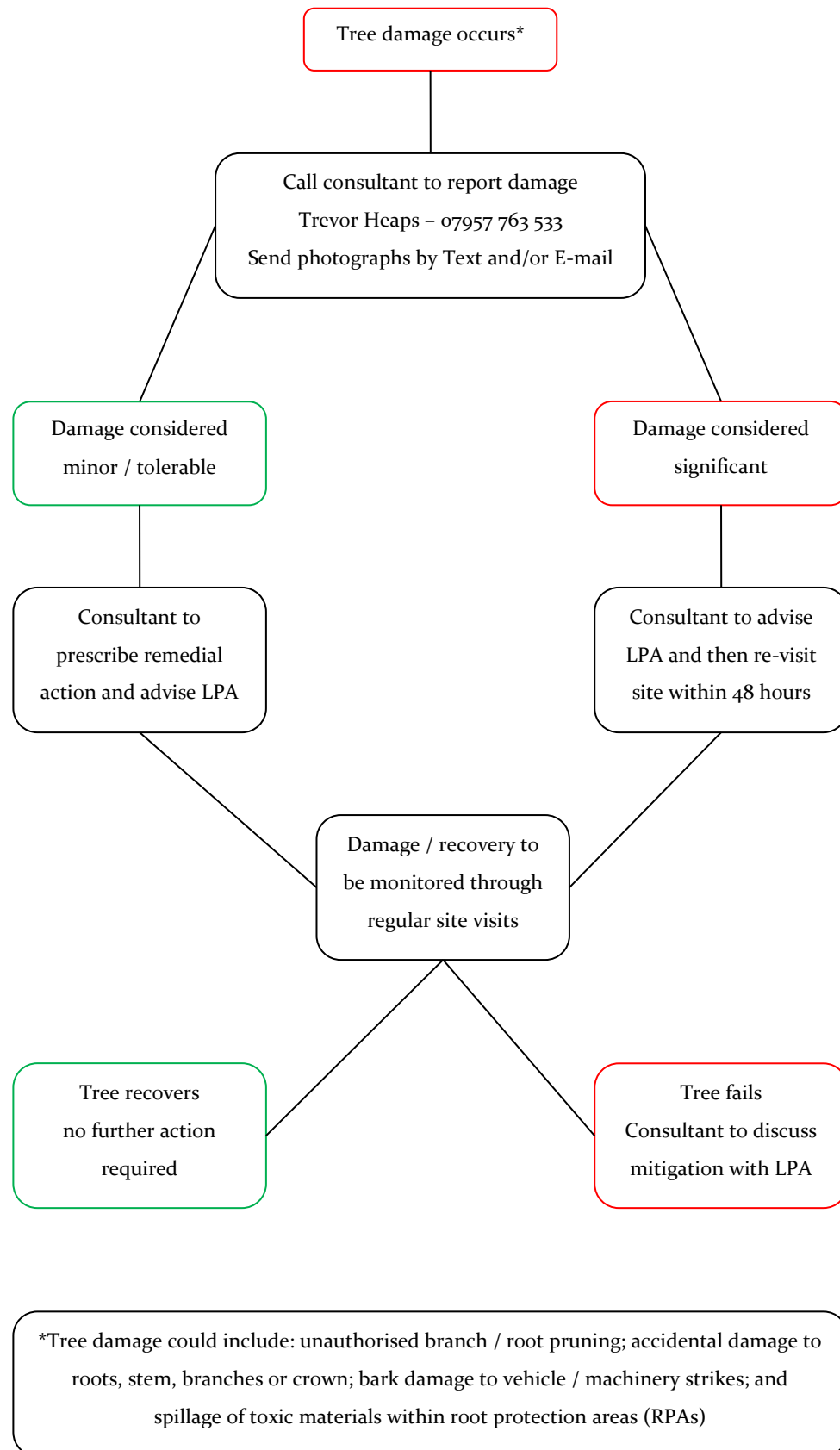
**5.8 Remedial works and soil improvement:** Exposed soils are easily compacted resulting in loss of water and gaseous exchange; this can lead to root death (and subsequently tree death).

**5.8.1** To relieve ground compaction, which may have resulted from the use of vehicles or by the storage of materials, the soils should be broken up to allow air to penetrate and for the soil structure to be restored. There are various methods to achieve this, such as: auguring the soil by hand / fork or pneumatic excavation (e.g. with an air spade); both should be combined with soil structure improvements (see 5.8.2).

**5.8.2** The soil structure can be improved by incorporating a compost or mulch within the topsoil, of 75-100mm in depth. This can be spread over the surface and gently forked into the soil. If bark chip is used as mulch, NPK fertilizer should be added to counteract the nitrogen depletion of the soil. There is also the option of adding mycorrhizal fungal which may also improve root function.

**5.9 Choosing an arborist:** When appointing a tree works contractor, please only use properly qualified and experienced companies who comply with current British Standards (3998) and always check that they carry Public Liability Insurance within a minimum of £2,000,000 cover, and the relevant Employers Liability Insurance. A list of contractors approved by the Arboricultural Association can be found at [www.trees.org.uk](http://www.trees.org.uk) or by calling 01242 522 152.

## Appendix 6 - Procedure to follow in case of damage to retained trees



## Appendix 7 - Induction form for all site personnel

**Site name:** .....

**App. No.:** .....

**Appointed Site Supervisor:** .....

- I have had explained to me by the Site Manager the key implications of the Arboricultural Method Statement relating to the development at the above site.
- I am aware that trees have shallow roots and any excavation works beneath the canopy could cause irreparable damage.
- I am aware that the tree protective fencing / ground protection must remain in its original position and must not be moved without the approval of the appointed Arboricultural Consultant.
- I understand that certain operations must be supervised by the appointed Arboricultural Consultant and that these must not start until the consultant is present and has given approval.
- I confirm that I will bring any concerns about potential damage to trees to the attention of the Site Manager.
- I am aware that I must not cause damage to any of the retained trees on or adjacent to the site. Damage may be caused by direct means (i.e. physical damage caused to roots or the trunk/branches of the tree) or by indirect means (e.g. by fire or toxic materials entering the rooting environment of the tree).

**Print Name:** .....

**Sign Name:** .....

**Date:** .....

### Appendix 8 - Site inspection record

Date: .....		Time: .....		Planning reference: .....	
Site: .....					
Those present in addition to project arboriculturist:					
Client / Agent: .....					
Project / Site manager: .....					
LPA arboricultural officer: .....					
Other (specify): .....					
	Yes	No	Notes		
Tree protection measures located in accordance with TPP?					
Any disturbance within construction exclusion zone?					
Any materials stored within construction exclusion zone?					
Any evidence of damage to tree roots, stems or canopies?					
Any works programmed before next planned site visit that may affect retained trees? (if yes, provide details below)					
Additional site visit required to ensure compliance with required action? (Y / N)					
Proposed visit date:					
Signed:			Date:		

