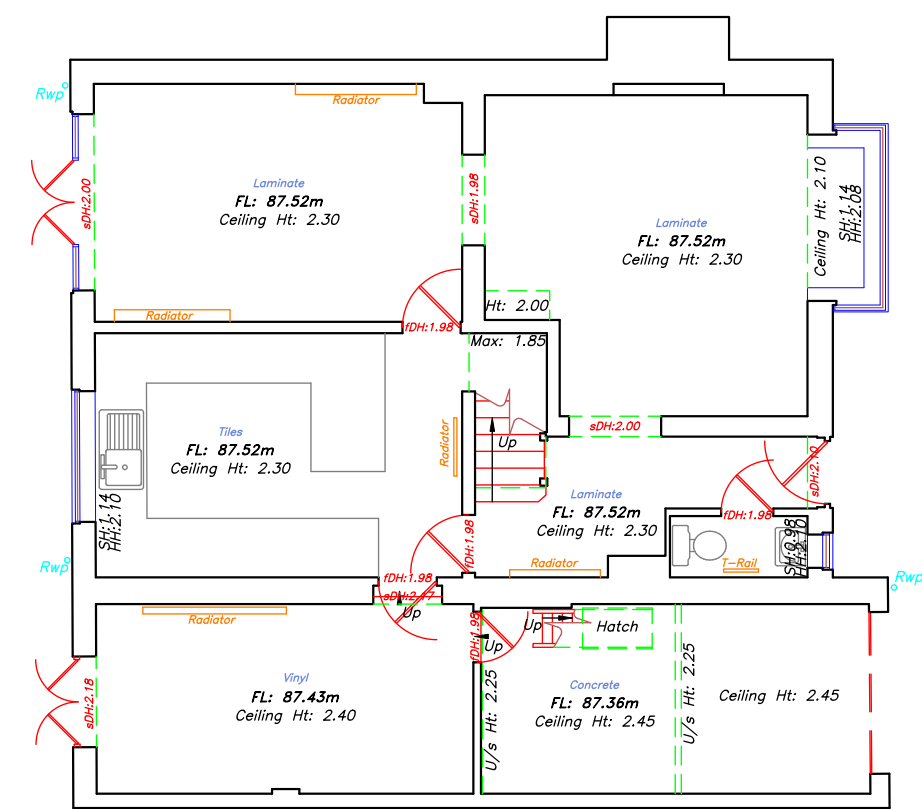
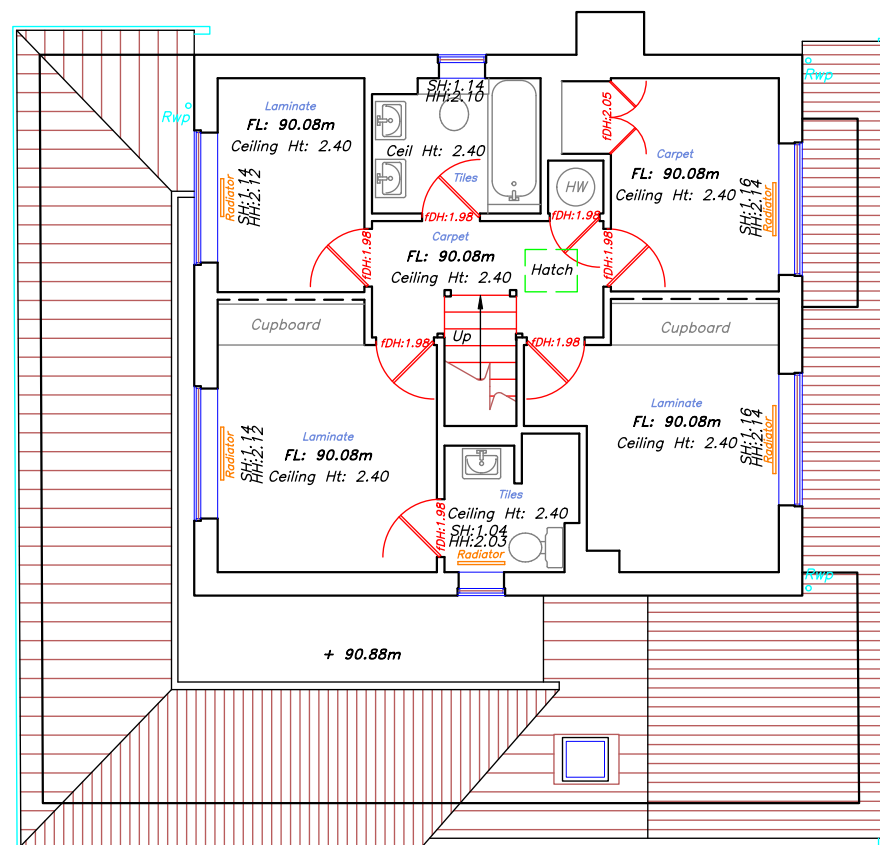


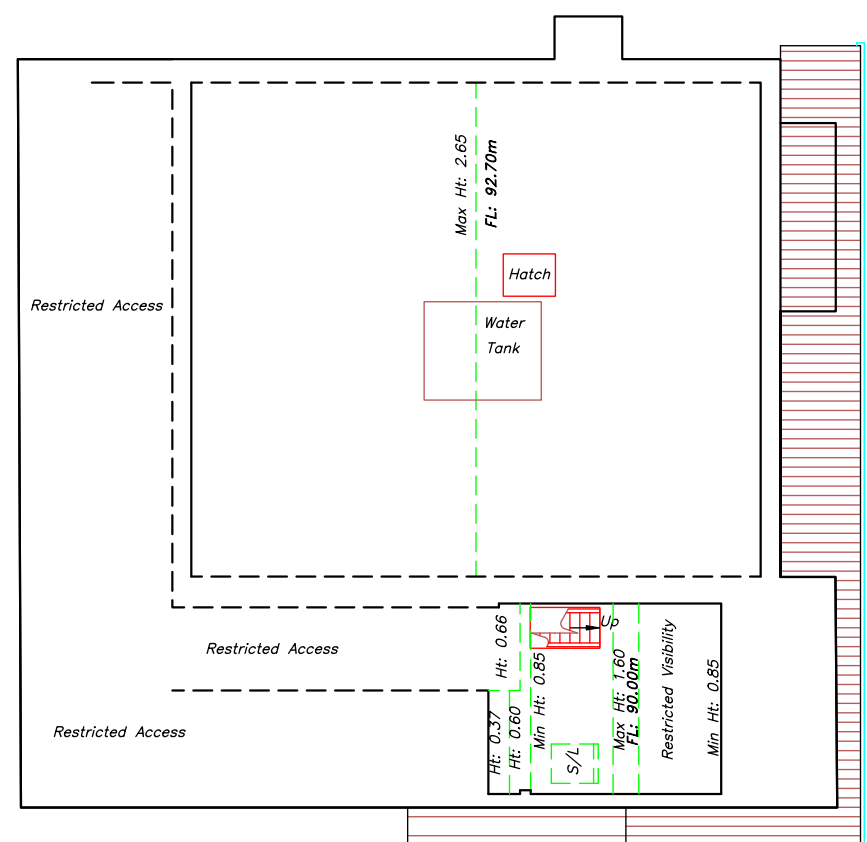
Ground Floor Plan



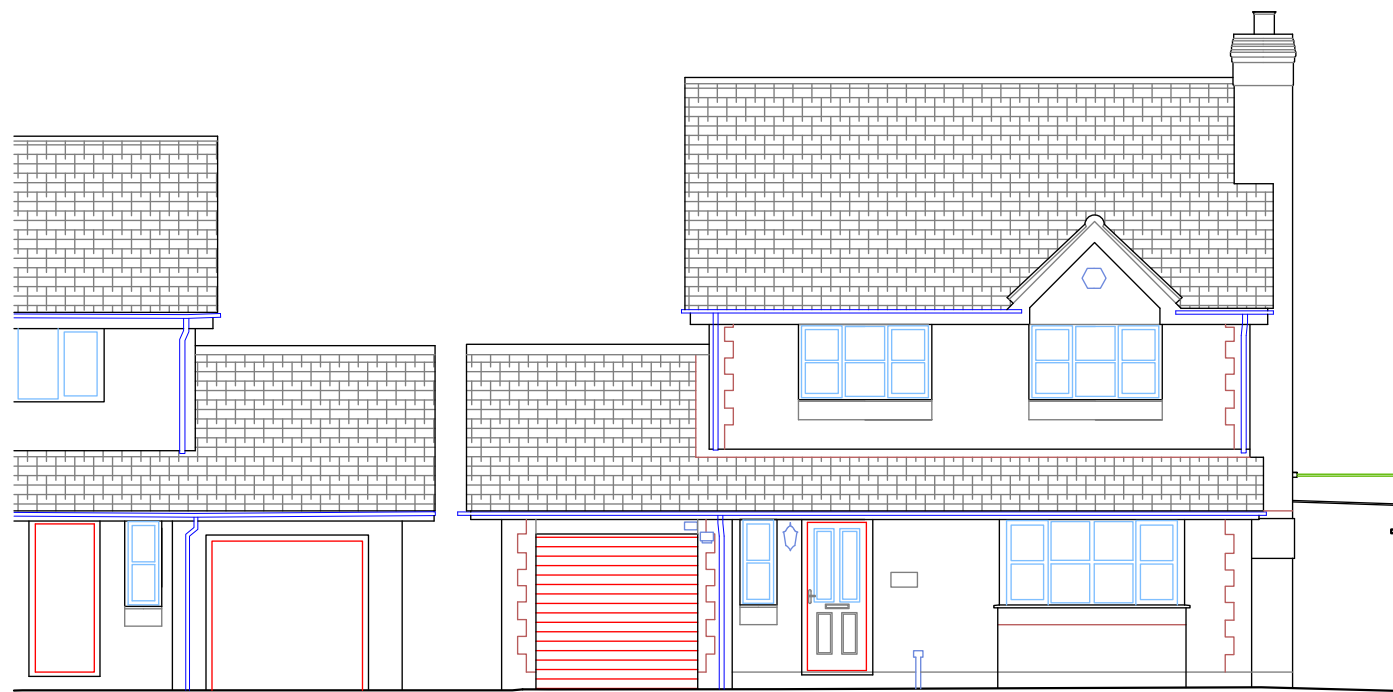
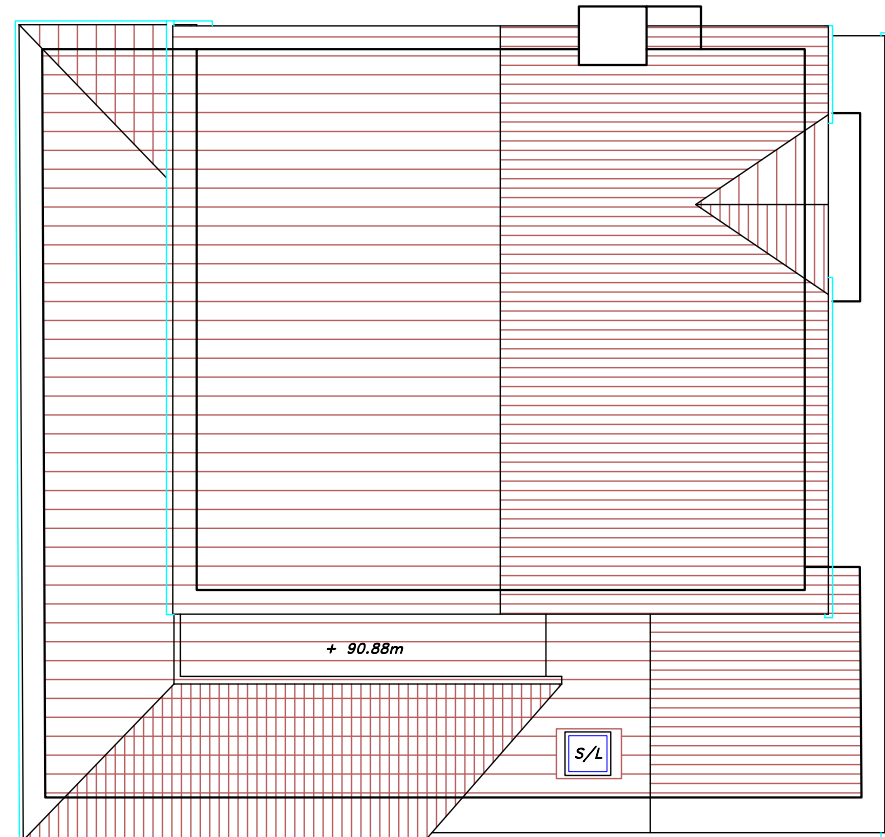
First Floor Plan



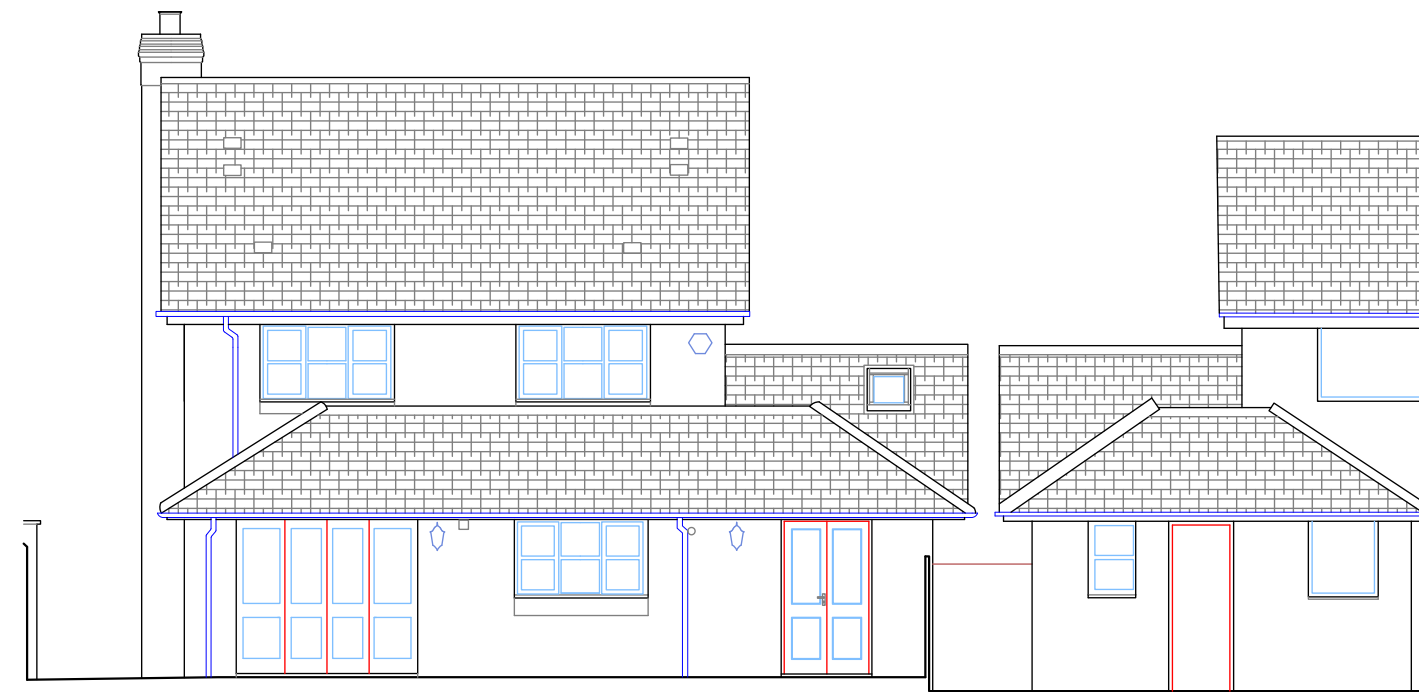
Loft Plan



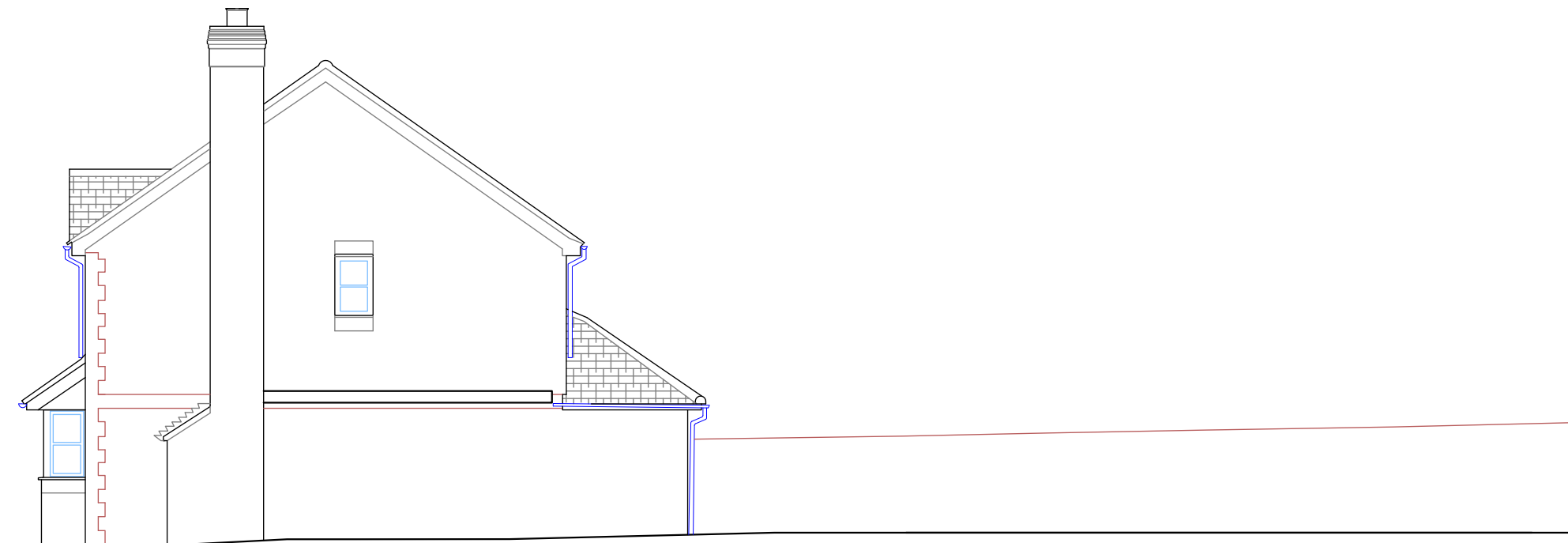
External Roof Plan



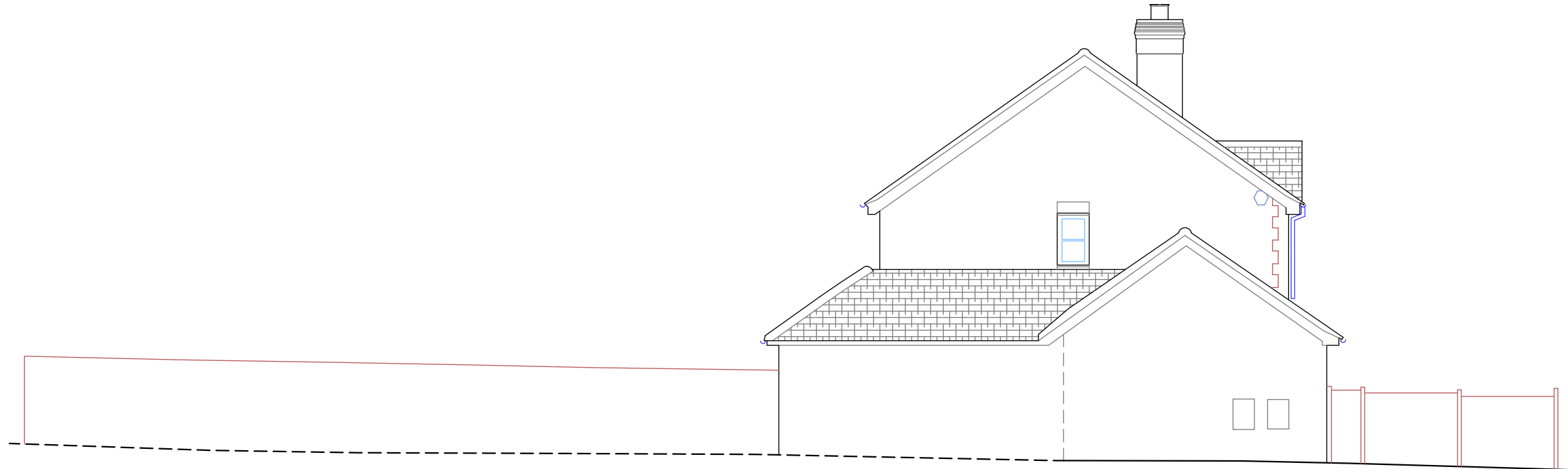
Datum: 86.00m.
Elevation 1.



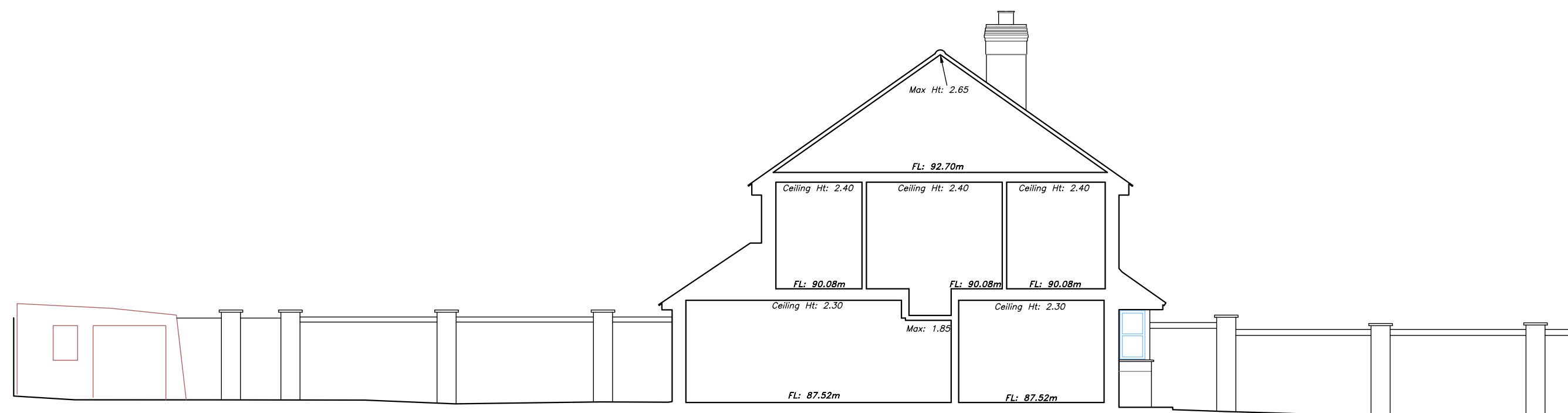
Datum: 86.00m.
Elevation 3.



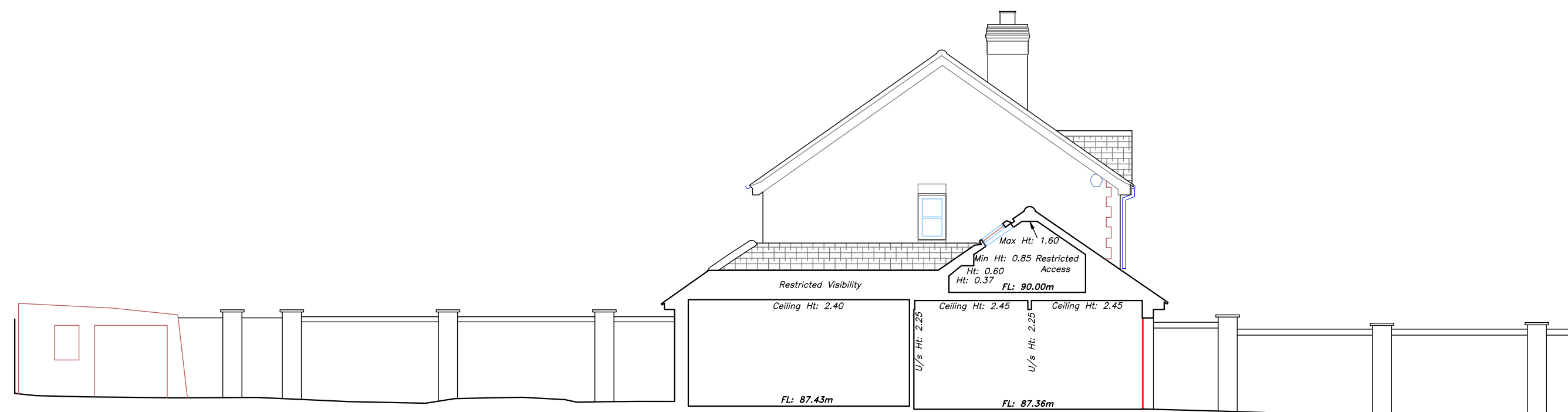
Datum: 86.00m.
Elevation 2.



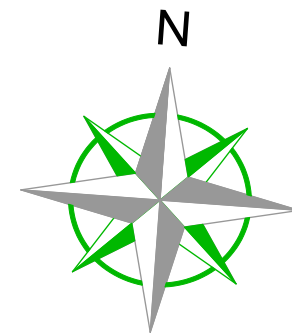
Datum: 86.00m.
Elevation 4.


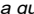


Datum: 86.00m.
Section A.



Datum: 86.00m.
Section B.



OS Note:
 The Ordnance Survey title is to be used as a guide only.
 OS Buildings  Surveyed Buildings 

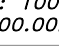
This survey has been originated to the Ordnance Survey (OS) National Grid OSG36(15) via Global Navigational Satellite Systems (GNSS) and the OS's Active Network (OS Net).














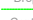










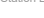









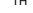


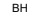












































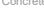







A true OSG36 coordinate has been established near to the site centre as a true reference to the OSTN15GB and OSGM15GB transformation models.

The survey has been correlated to this point and a further one or more OSG36(15) points established to create a true OS bearing for angle orientation.

No scale factor has been applied to the survey therefore the coordinates shown are arbitrary & not true OS. Coordinates which have a scale factor applied.

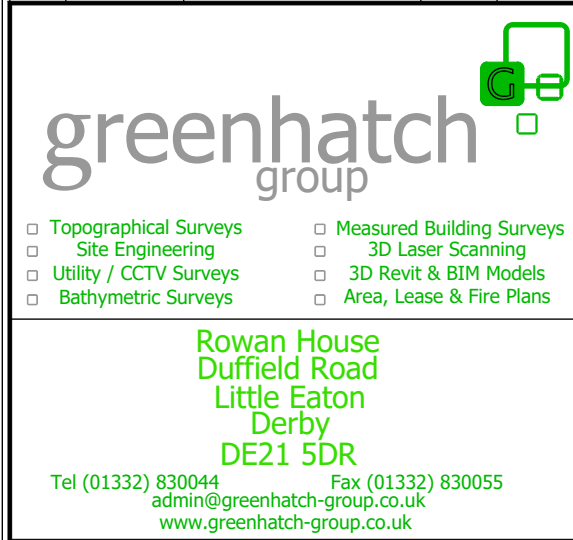
Please refer to Survey Station Table to enable establishment of the on-site grid.

Building Survey Legend:	
SHT 1.00	Sill Height from FFL.
HHT 2.12	Head Height from FFL.
SL 51.03m	Sill Level from defined datum.
HL 52.82m	Head Level from defined datum.
Susp Chht: 2.00	Suspended Ceiling Height from FFL.
Struct Cht: 3.00	Structural Ceiling Height from FFL.
Susp Ceil: 30.00m	Suspended Ceiling Level from datum.
Struct Ceil: 31.00m	Structural Ceiling Level from datum.
IFL: 100.00m	Internal Floor Level (General).
+100.00m	Internal Floor Level (Specific).
	Insertion Point for overlay drawings of other floors or details.

Eggs		Gags		Water	
Topographical Survey Legend:					
	Buildings		Contour Lines		Blue
	Walls		Contour Range		Black
	Roads		Contour Interval		Brown
	Leaving marks		Contour Gauge		Violet
	Contour Lines		Contour (Contour)		Green
	Contour Lines		Contour (Contour)		Blue
	Contour Lines		Contour (Contour)		Blue
	Contour Lines		Contour (Contour)		Blue
	Contour Lines		Contour (Contour)		Blue
	Contour Lines		Contour (Contour)		Blue
	Contour Lines		Contour (Contour)		Blue
	Contour Lines		Contour (Contour)		Blue
	Contour Lines		Contour (Contour)		Blue
	Contour Lines		Contour (Contour)		Blue
	Contour Lines		Contour (Contour)		Blue
	Contour Lines		Contour (Contour)		Blue
	Contour Lines		Contour (Contour)		Blue
	Contour Lines		Contour (Contour)		Blue
	Contour Lines		Contour (Contour)		Blue
	Contour Lines		Contour (Contour)		Blue
	Contour Lines		Contour (Contour)		Blue
	Contour Lines		Contour (Contour)		Blue
	Contour Lines		Contour (Contour)		Blue
	Contour Lines		Contour (Contour)		Blue
	Contour Lines		Contour (Contour)		Blue
	Contour Lines		Contour (Contour)		Blue
	Contour Lines		Contour (Contour)		Blue
	Contour Lines		Contour (Contour)		Blue
	Contour Lines		Contour (Contour)		Blue
	Contour Lines		Contour (Contour)		Blue
	Contour Lines		Contour (Contour)		Blue
	Contour Lines		Contour (Contour)		Blue
	Contour Lines		Contour (Contour)		Blue

--	--	--	--	--

Rev	Date	Description	Drawn	Q. Ref.
-----	------	-------------	-------	---------



St Albans Unit B, The Courtyard Alban Park St Albans Hertfordshire AL4 0LA t. (01727) 854481	Newcastle 24 Riverside Studios Armesthyst Road Newcastle Bus. Park Newcastle-U-Tyne NE4 7YL t. (01912) 736391	Central London 27 Cornwall Terrace Mews Regents Park London NW1 5LL t. (0207) 2241806
--	---	--

CLIENT

**Keri Barr
Architects Ltd**

PROJECT

**4 Lewis Close
Uxbridge
UB9 6RD**

<div> <div>TITLE</div> <div>Existing Plans, Elevations & Sections</div> </div>	
<div> <div>SCALE</div> <div>A1@ 1: 100</div> </div>	<div> <div>DATE</div> <div>March 2024</div> </div>
<div> <div>DRAWN</div> <div>JJ</div> </div>	<div> <div>QUALITY REF</div> <div>GH20196</div> </div>

Level datum	OS GPS Level	
Grid orientation	OS GPS	
Job number	50206	
Drawing No.	50206_02_PES	Rev. 0

Comments

This plan should only be used for its original purpose. Greenhatch Group accepts no responsibility for this plan if supplied to any party other than the original client.

All dimensions should be checked on site prior to design and construction.

Some services may have been omitted due to parked vehicles.

Drainage information (where applicable) has been visually inspected from the surface and therefore should be treated as approximate only.