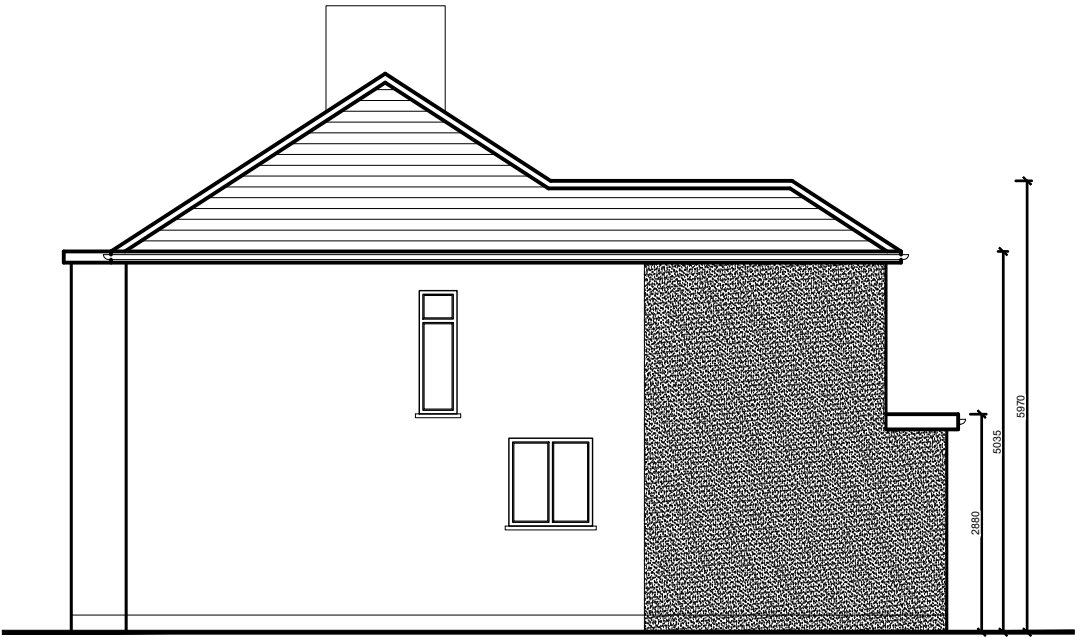




The Contractor is to check all dimensions on site and report any discrepancies to the Contract Administrator. This drawing is to be read in conjunction with all other standard documentation.



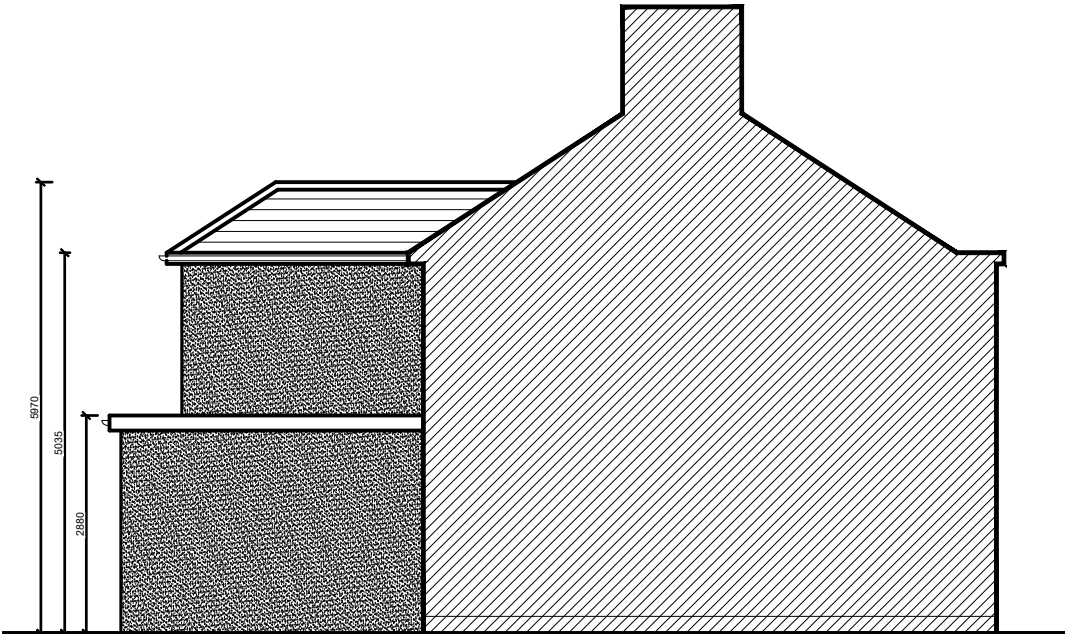
PREVIOUSLY APPROVED
FRONT ELEVATION
47790/APP/2025/1293



PREVIOUSLY APPROVED SIDE ELEVATION
47790/APP/2025/1293



PREVIOUSLY APPROVED
REAR ELEVATION
47790/APP/2025/1293



PREVIOUSLY APPROVED SIDE ELEVATION
47790/APP/2025/1293

rev.	description	date	chkd.
<div><div><div><div><div></div><div></div></div><div><div></div><div></div></div></div><div><div>Design And Plan</div><div>CONSULTANTS</div></div></div><div><div>93 Cotmandene Crescent, Orpington, Kent BR5 2RA</div><div>020 3004 9238 07931 931 035</div><div>s.nagpal@dapconsultants.co.uk www.dapconsultants.co.uk</div></div></div>			
project : 15 Phelps Way Hayes			
drawing title : Previously Approved Elevations			
drawn: MV	chkd : SS	date: 02.10.2025	
status: Planning		scale: 1:100@A3	
proj no : 2838	drg no: 05	rev no:	