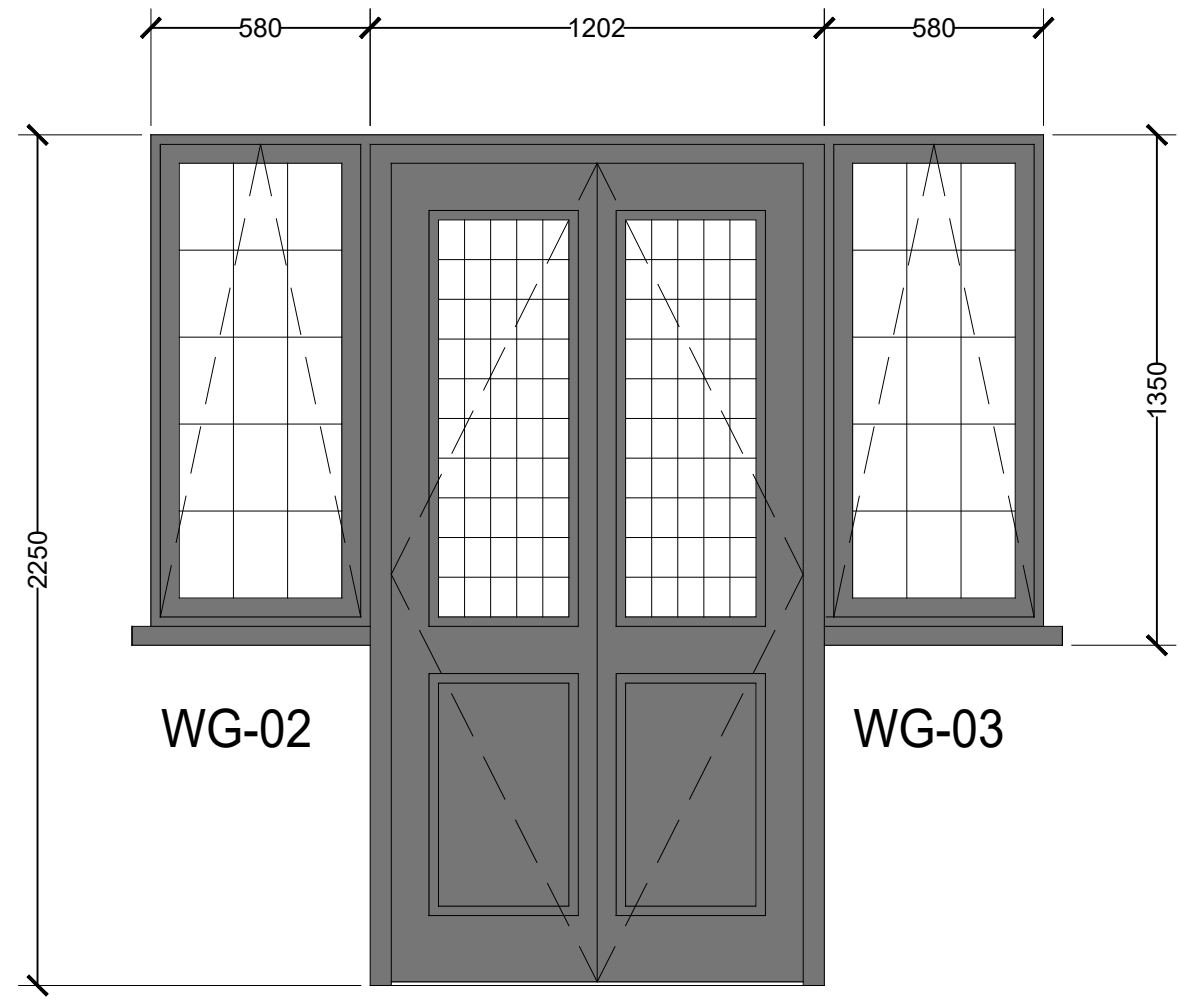


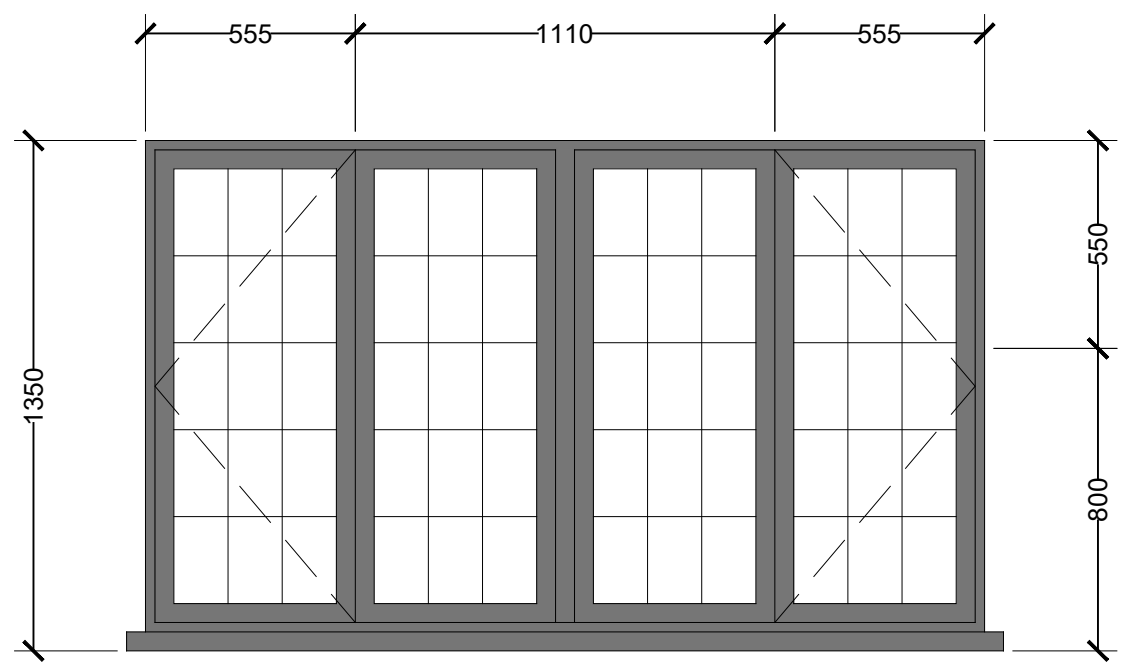
WG-01



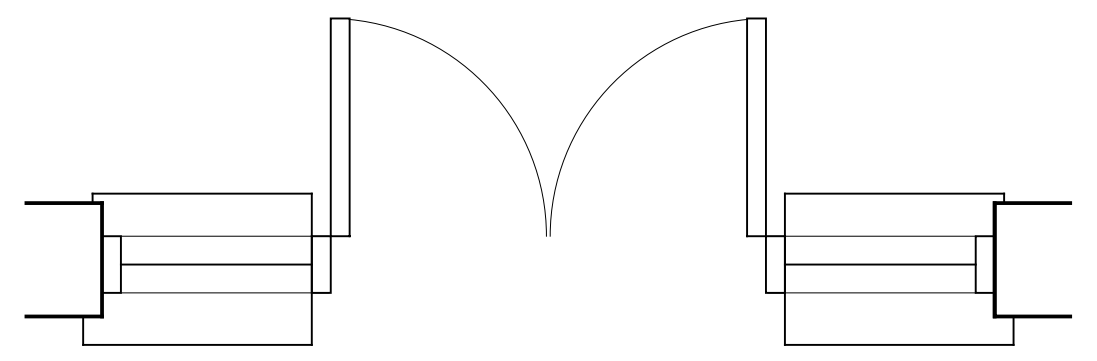
WG-02

WG-03

DG-01



WG-04

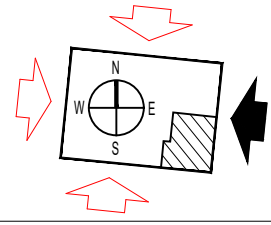


WG-02

DG-01

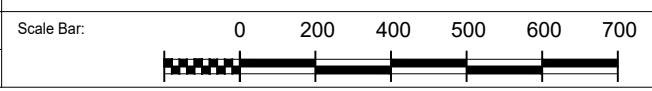
WG-03

ALL WINDOWS ARE THERMALLY BROKEN POWDER COATED ALUMINUM  
COLOUR: BLACK



- C1 PRELIMINARY ISSUE
- C2 CLIENT AMENDMENTS TO EXTERNAL WINDOWS AND DOORS
- C3 ISSUED TO LPA FOR DISCHARGE OF CONDITION (20.12.2025)
- C4 CORRECTED SCALE BAR
- C5 ISSUED TO LPA FOR DISCHARGE OF CONDITION (23.02.2026)

Client:  
**D RANA & H SANDHU**



Project:  
**25 ST MARTINS APPROACH**

Title:  
**WINDOW SCHEDULE (PAGE 1 of 8)**

Scale: 1:20@A3	Project No: 1186	Drawing No: 1186 (31) 05	Rev: <b>C5</b>
-------------------	---------------------	-----------------------------	-------------------