

LOCATION PLAN

NOTES:

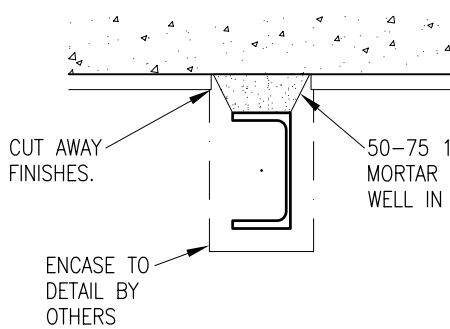
- DO NOT SCALE FROM THIS DRAWING.
- ALL DIMENSIONS TO BE CHECKED ON SITE BY THE CONTRACTOR.
- WHERE DISCREPANCY OCCURS BETWEEN SPECIFICATION AND DRAWINGS THE ENGINEER MUST BE NOTIFIED IMMEDIATELY.

CDM NOTES:

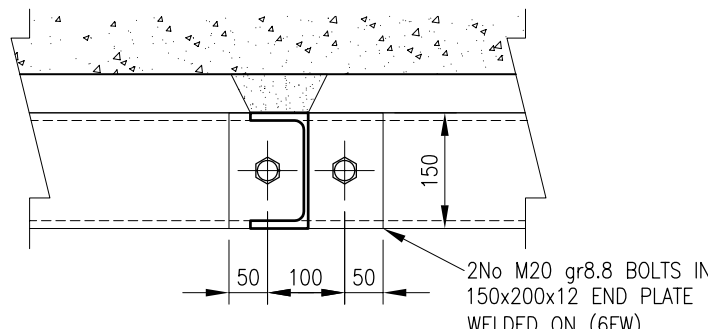
- USE SUITABLE SPREADERS WHEN TRANSPORTING HEAVY EQUIPMENT OVER SUSPENDED FLOORS.

BASEMENT SHOWING STRUCTURE OVER

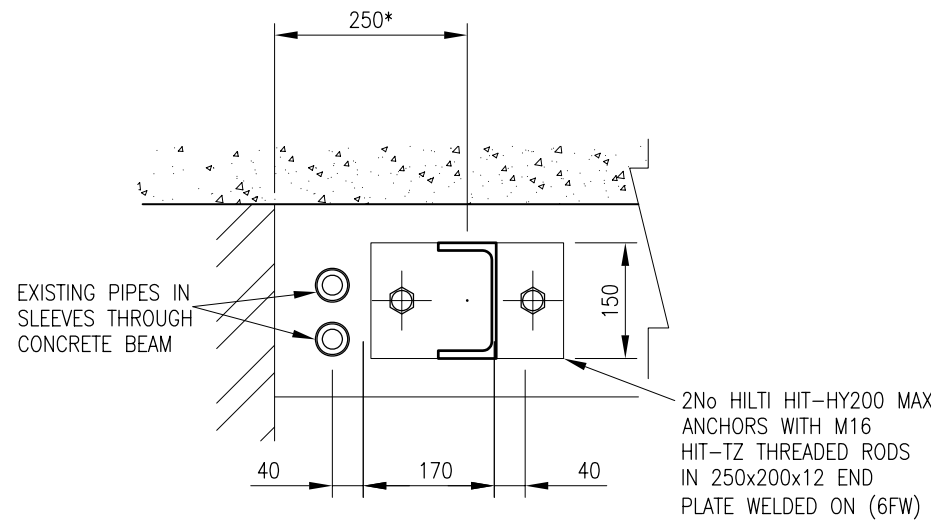
1:20



SECTION A-A
1:10

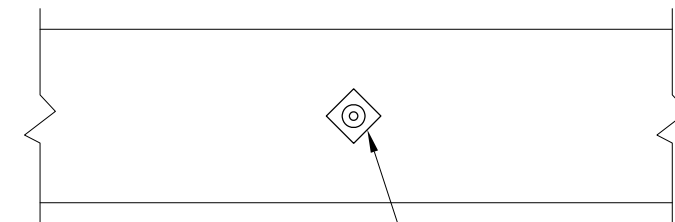


SECTION B-B
1:10



SECTION C-C
1:10

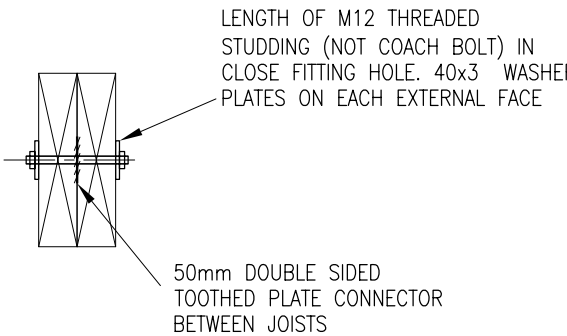
* NOMINAL CLEARANCE FROM WALL MAY BE ADJUSTED TO FACILITATE INSTALLATION, ETC.



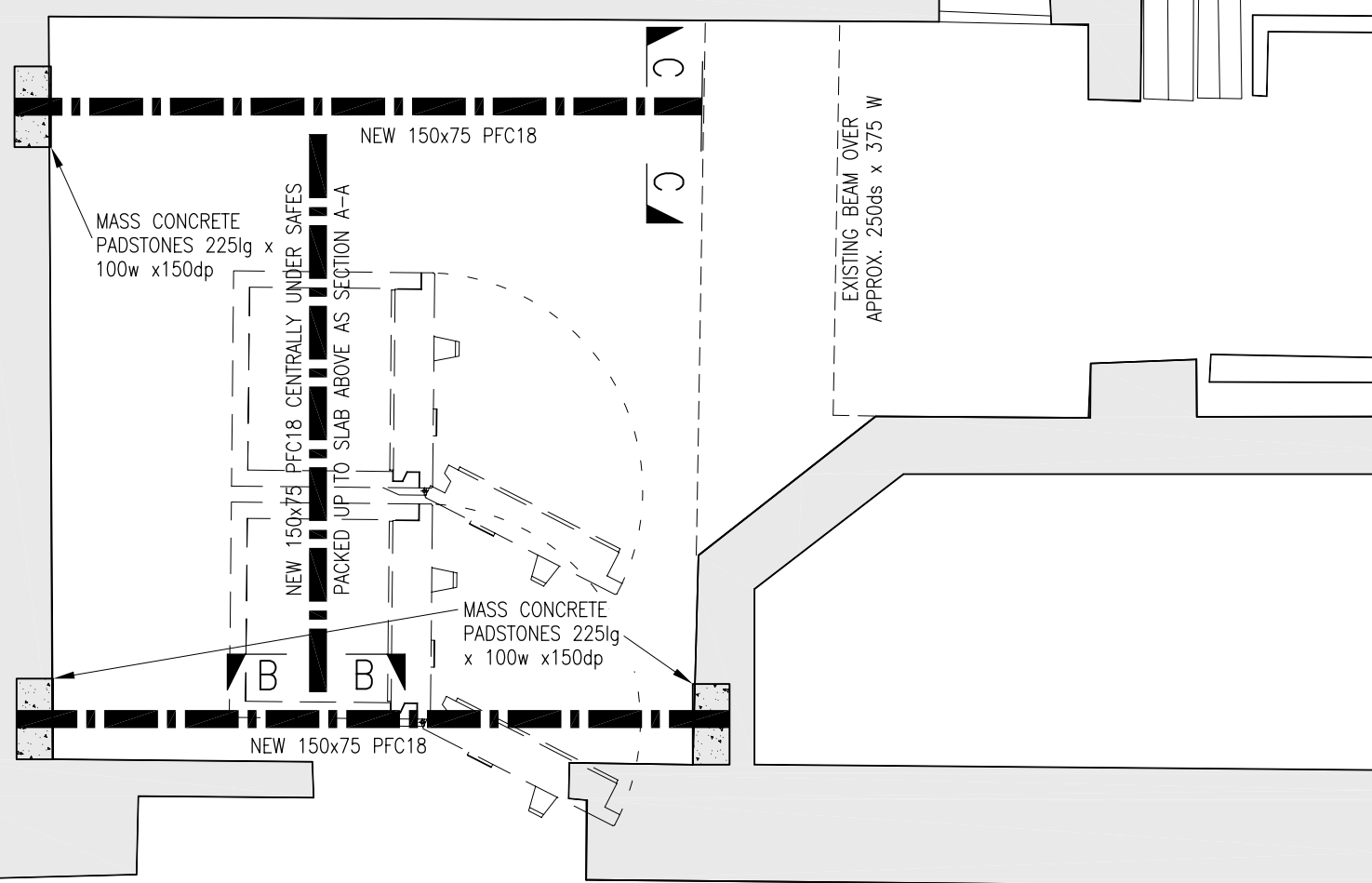
BOLT LOCATED AT MID-DEPTH OF JOIST WITH BOLT AXIS AT RIGHT ANGLES TO JOIST FACE. UNLESS OTHERWISE NOTED PROVIDE BOLTS @ MAX SPACING OF 600mm, WITHIN 200mm OF THE SUPPORT FACE AND A MIN. OF 3No PER MEMBER

TIMBER BOLTING

DETAIL OF TIMBER BOLTING
1:10



LENGTH OF M12 THREADED STUDDING (NOT COACH BOLT) IN CLOSE FITTING HOLE. 40x3 WASHER PLATES ON EACH EXTERNAL FACE



C1	CONSTRUCTION ISSUE	16/9/13	DD	DD
P2	SAFE SUPPORTS ADJUSTED TO AVOID ELECTRICAL SERVICES.	4/3/13	MV	DD
P1	PRELIMINARY	4/3/13	MV	DD
REV	DESCRIPTION	DATE	BY	CHK

BUXTON ASSOCIATES
CONSULTING STRUCTURAL ENGINEERS

Calhite House, 23a Willow Lane
Mitcham, Surrey, CR4 4TU
T: 020 8288 4845
F: 020 8288 4847

CLIENT:

HSBC

CONTRACT:

27 HIGH STREET,
UXBRIDE UB8 1JN

TITLE:

BASEMENT

SCALE:

1:20 @ A1

ENGINEER:

DD

DRAWN BY:

MKV

DATE:

MARCH 2013

CHECKED BY:

DD

APPROVED:

.

DRAWING No:

5204/02

REVISION

C1