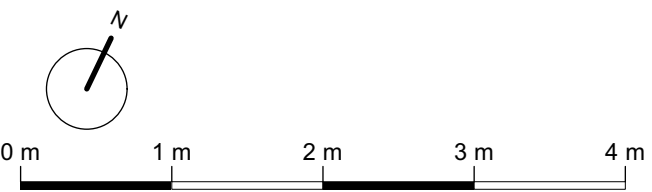
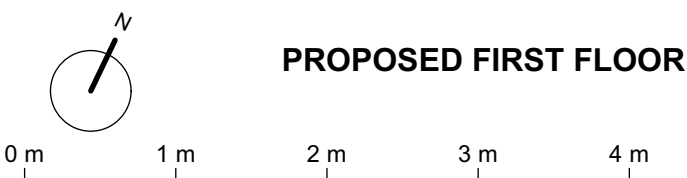
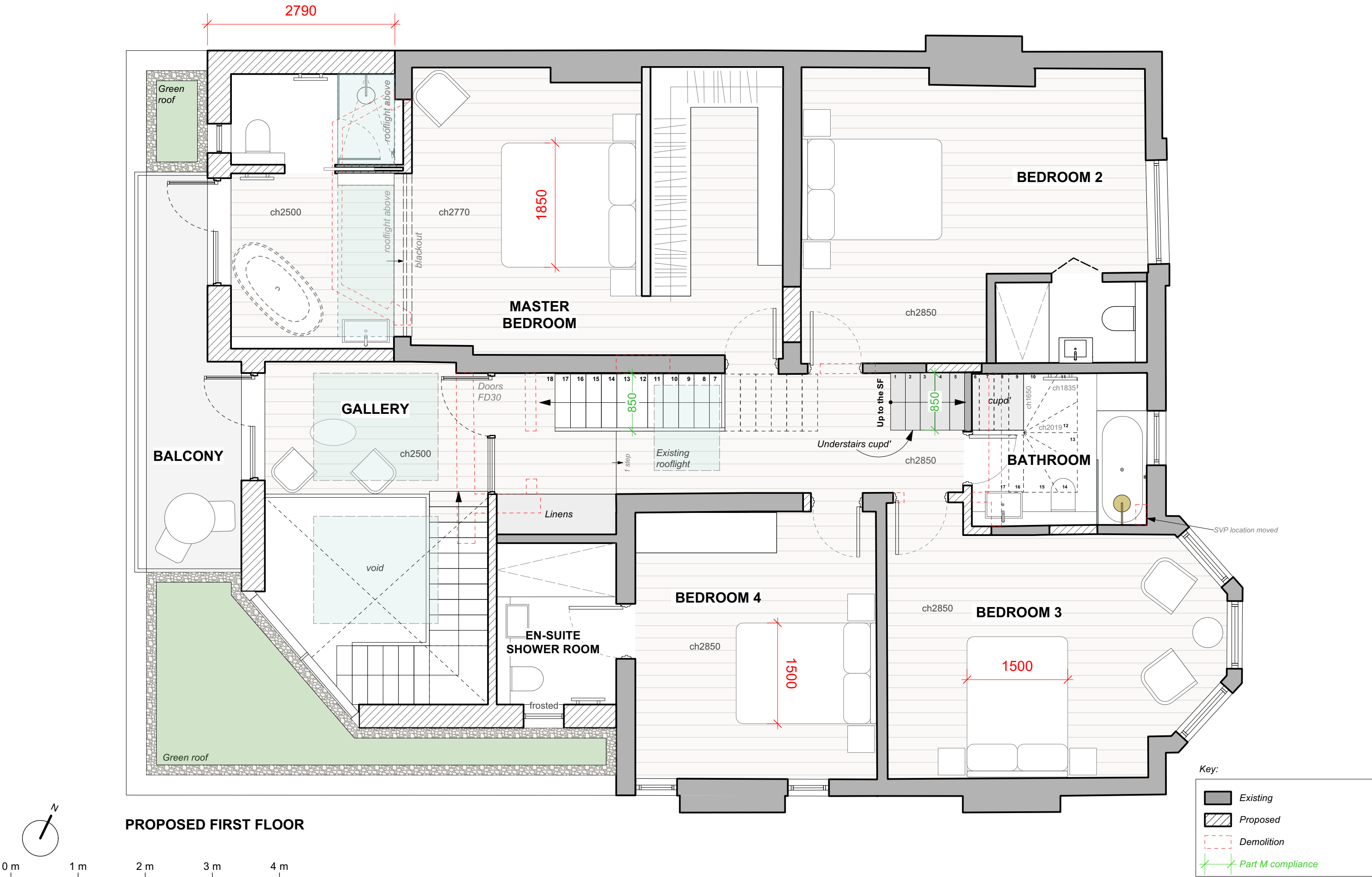


PROPOSED GROUND FLOOR

Key:

- Existing
- Proposed
- Demolition
- Part M compliance





Do not scale off this drawing. All copyrights relating to the design work contained on this drawing to be retained by Pike & Partners Architects Ltd.

Revisions

16 MURRAY ROAD, HA6 2YJ
PROPOSED FRIST FLOOR PLAN

Drawing no. 23-1187-301 Rev. C

Pike & Partners Architects Ltd

Scale 1:50 @ A3
Status PLANNING
Client C&M CHAPLIN-ROBERTS

537 Battersea Park Road . London . SW11 3BL

Date MAR 23
Drawn By EG

Pike&Partners
Architects

www.pikeandpartners.com T: 020 79246257

Green roof below

Metal capping to
parapet

New flat roof,
single ply

Existing flat roof,
felt with lead
flashing

Metal capping to
parapet

Metal capping to
parapet

Green roof below



0 m 1 m 2 m 3 m 4 m

PROPOSED SECOND FLOOR

Revisions

Do not scale off this drawing. All copyrights relating to the design work contained on this drawing to be retained by Pike & Partners Architects Ltd.

Solar PV Panels

Rooflight

Rooflight

Existing
rooflight

Full height window

ch 1476mm

Rooflight above

GYM/ MUSIC
ROOM

Rooflight above

ch 1500mm

ch 2100mm

ch 2260mm

STUDY

H=1800mm

Rooflight above

BEDROOM 5

H=1800mm

Dormer

Ridge

Height level approx. 1066 mm
Low level storage

SHOWER
ROOM

From FF

Cupd'

BALCONY

Height level approx. 800 mm

Key:

- Existing
- Proposed
- Demolition
- Part M compliance

16 MURRAY ROAD, HA6 2YJ
PROPOSED SECOND FLOOR PLAN

Drawing no. 23-1187-302 Rev.C

Pike & Partners Architects Ltd

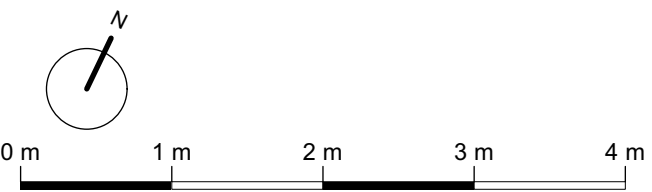
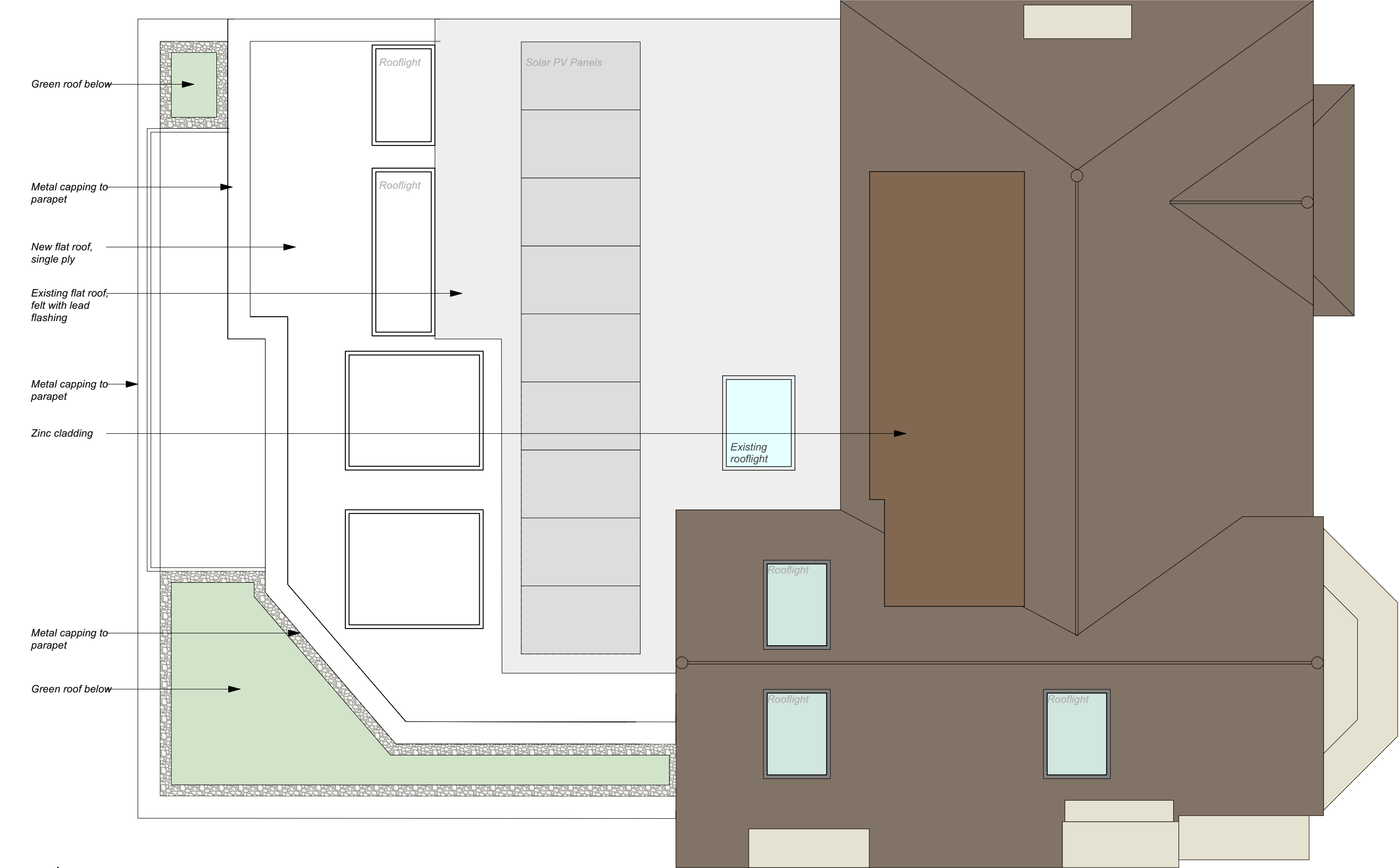
Scale 1:50 @ A3
Status PLANNING
Client C&M CHAPLIN-ROBERTS

537 Battersea Park Road . London . SW11 3BL

Date MAR 23
Drawn By EG

Pike&Partners
Architects

www.pikeandpartners.com T: 020 79246257



Revisions	
Do not scale off this drawing. All copyrights relating to the design work contained on this drawing to be retained by Pike & Partners Architects Ltd.	

16 MURRAY ROAD, HA6 2YJ
PROPOSED ROOF PLAN

Drawing no. 23-1187-303 Rev.C
Pike & Partners Architects Ltd

Scale 1:50 @ A3
Status PLANNING
Client C&M CHAPLIN-ROBERTS

Date MAR 23
Drawn By EG

Pike&Partners
Architects

537 Battersea Park Road . London . SW11 3BL
www.pikeandpartners.com T: 020 79246257



Chimney stack reinstated

New door
reinstated in
existing opening.
Style to match no.
18 & no. 20
Murray Rd.

Balustrade to
balcony reinstated

Sash windows
reinstated

Sash windows
reinstated

Remove outer porch
entrance door to
match no. 18 & no.
20 Murray Road

0 m 1 m 2 m 3 m 4 m

Revisions

Do not scale off this drawing. All copyrights relating to the design work contained on this drawing to be retained by Pike & Partners Architects Ltd.

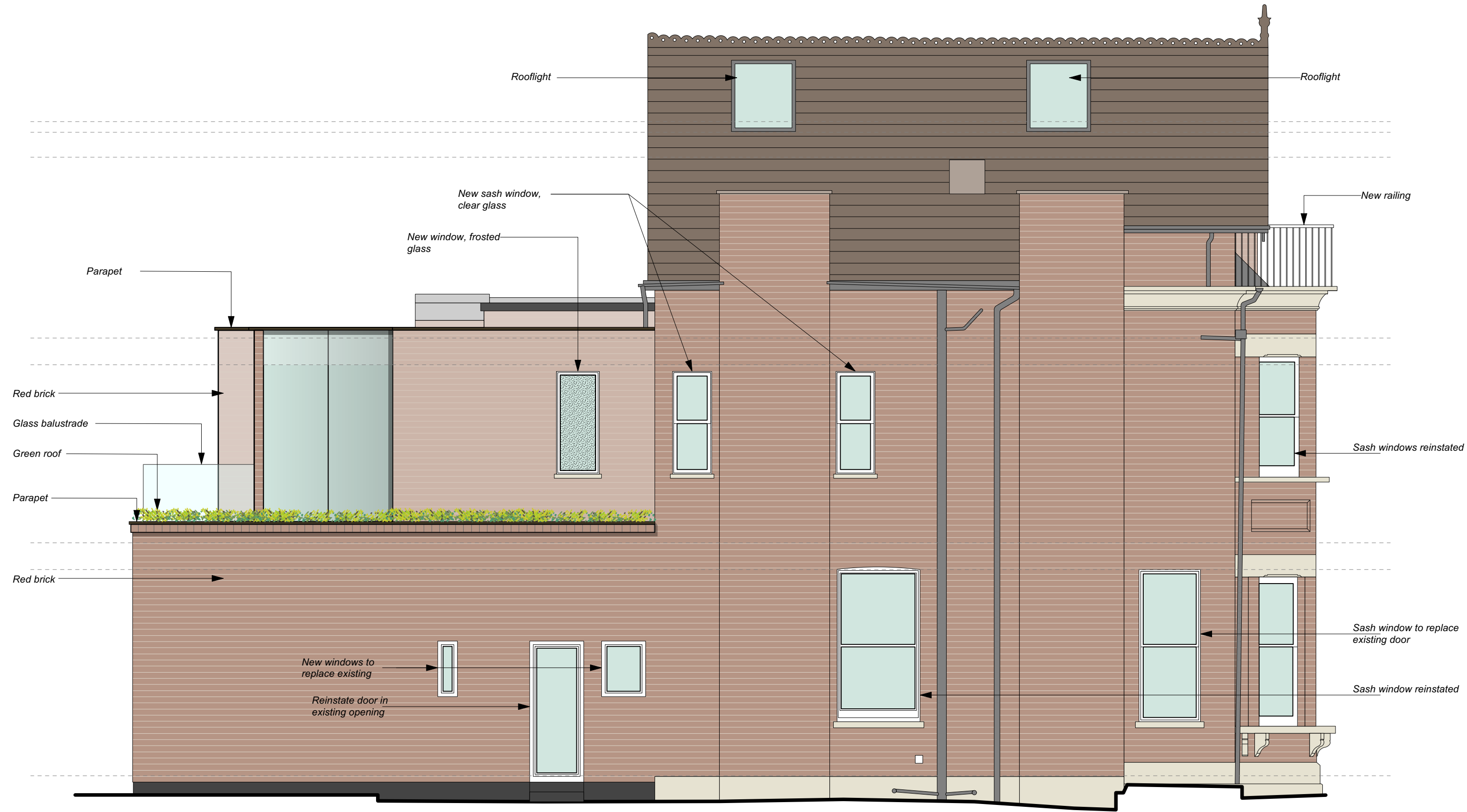
16 MURRAY ROAD, HA6 2YJ
PROPOSED FRONT ELEVATION

Drawing no. 23-1187-304 Rev.C
Pike & Partners Architects Ltd

Scale 1:50 @ A3
Status PLANNING
Client C&M CHAPLIN-ROBERTS

Date MAR 23
Drawn By EG

Pike&Partners
Architects
www.pikeandpartners.com T: 020 79246257



0 m 1 m 2 m 3 m 4 m

Revisions

Do not scale off this drawing. All copyrights relating to the design work contained on this drawing to be retained by Pike & Partners Architects Ltd.

16 MURRAY ROAD, HA6 2YJ
PROPOSED SOUTH ELEVATION (SIDE)

Drawing no. 23-1187-305 Rev.C

Pike & Partners Architects Ltd

Scale 1:50 @ A3
Status PLANNING
Client C&M CHAPLIN-ROBERTS

Date MAR 23
Drawn By EG

Pike&Partners
Architects

www.pikeandpartners.com T: 020 79246257



PROPOSED REAR ELEVATION

0 m 1 m 2 m 3 m 4 m

Revisions

Do not scale off this drawing. All copyrights relating to the design work contained on this drawing to be retained by Pike & Partners Architects Ltd.

16 MURRAY ROAD, HA6 2YJ
PROPOSED REAR ELEVATION

Drawing no. 23-1187-306 Rev.C

Pike & Partners Architects Ltd

Scale 1:50 @ A3

Status PLANNING

Client C&M CHAPLIN-ROBERTS

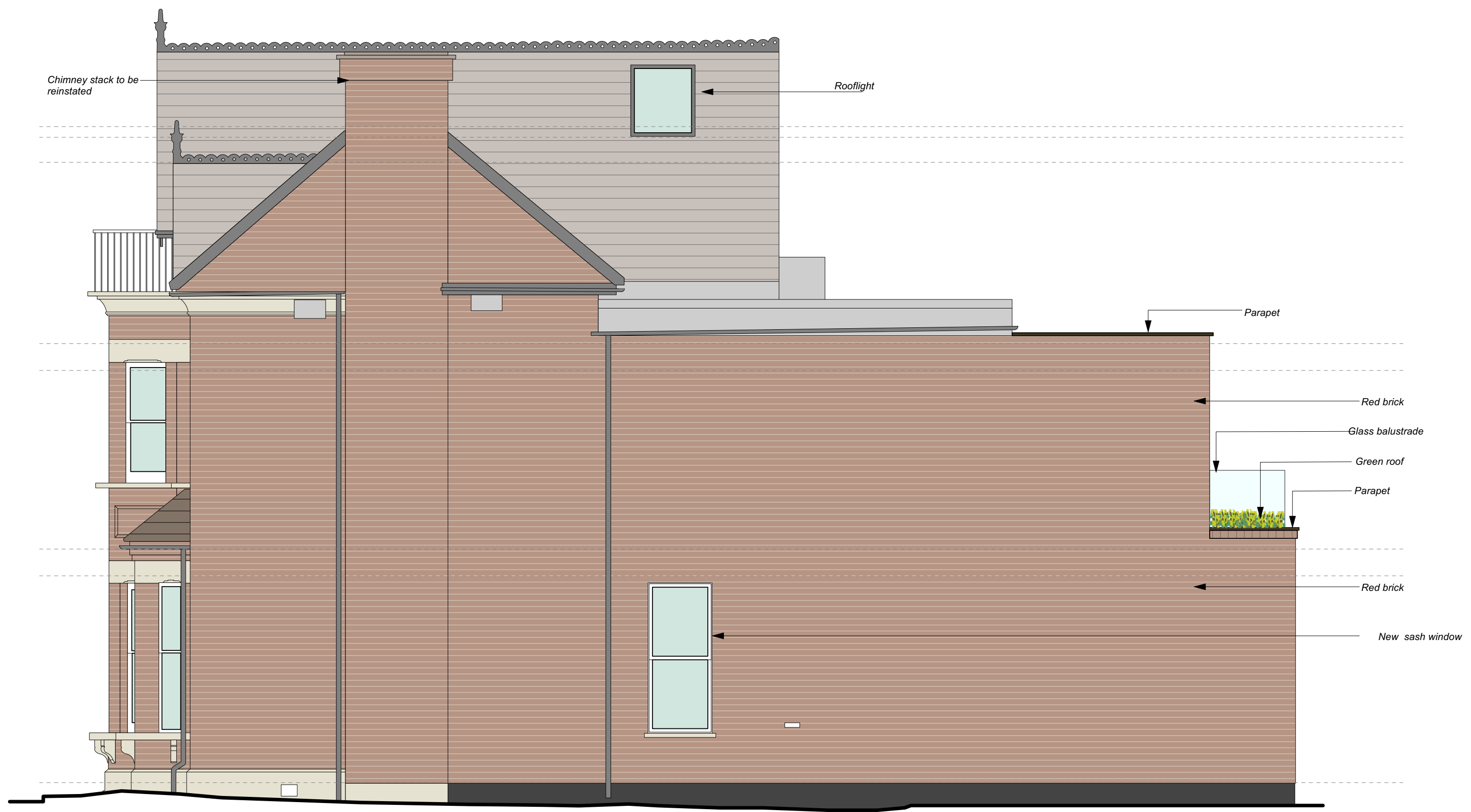
537 Battersea Park Road . London . SW11 3BL

Date MAR 23

Drawn By EG

Pike&Partners
Architects

www.pikeandpartners.com T: 020 79246257



0 m 1 m 2 m 3 m 4 m

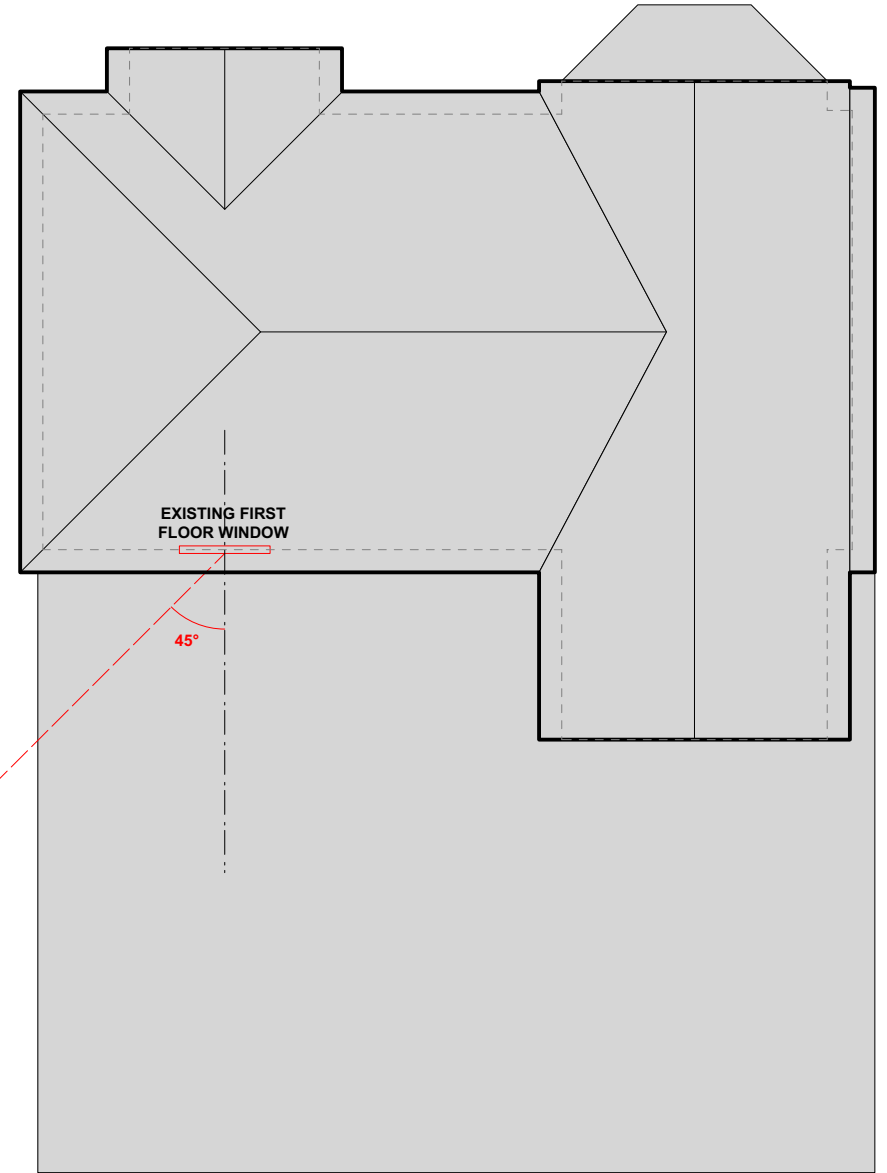
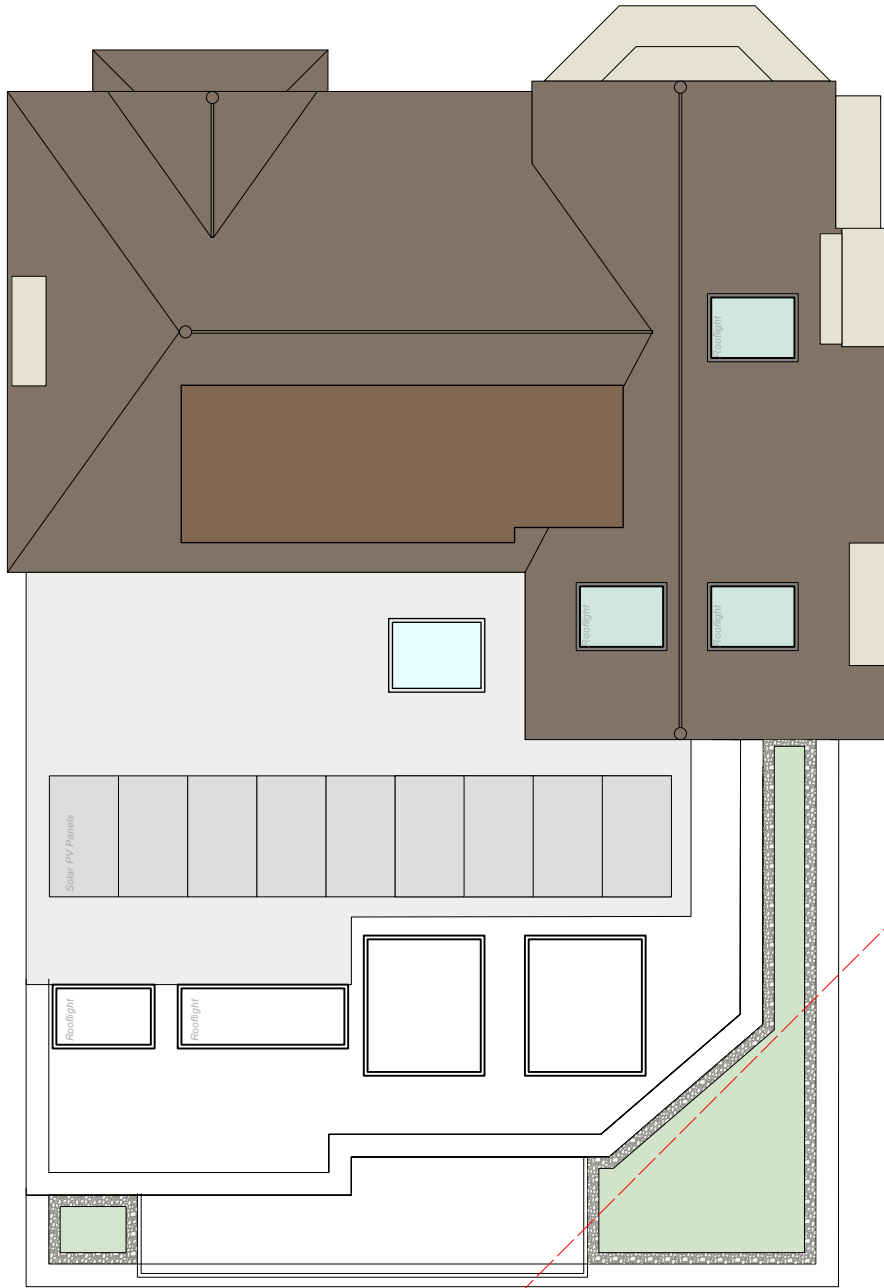
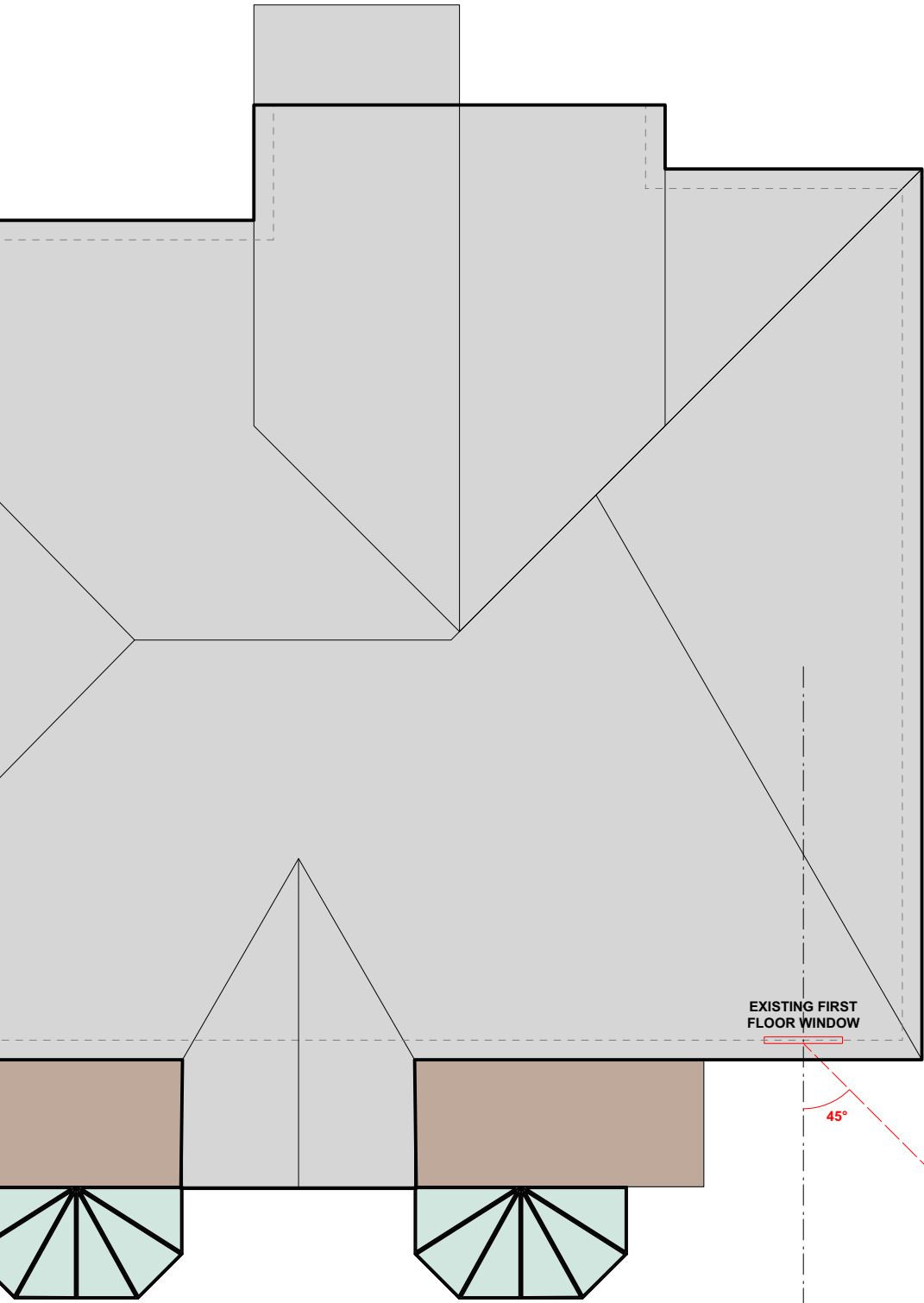
Do not scale off this drawing. All copyrights relating to the design work contained on this drawing to be retained by Pike & Partners Architects Ltd.

Revisions

16 MURRAY ROAD, HA6 2YJ
PROPOSED NORTH ELEVATION (SIDE)
Drawing no. 23-1187-307 Rev.C
Pike & Partners Architects Ltd

Scale 1:50 @ A3
Status PLANNING
Client C&M CHAPLIN-ROBERTS
Date MAR 23
Drawn By EG

Pike&Partners
Architects
www.pikeandpartners.com T: 020 79246257



14 MURRAY ROAD

16 MURRAY ROAD

18 MURRAY ROAD

LINE OF SITE BOUNDARY

LINE OF SITE BOUNDARY



0m 1m 2m 3m 4m 5m

Revisions

Do not scale off this drawing. All copyrights relating to the design work contained on this drawing to be retained by Pike & Partners Architects Ltd.

16 MURRAY ROAD, HA6 2YJ
OVERLOOKING ANALYSIS

Drawing no. 23-1187-800 Rev.C

Pike & Partners Architects Ltd

Scale 1:100 @ A3

Status PLANNING

Client C&M CHAPLIN-ROBERTS

537 Battersea Park Road . London . SW11 3BL

Date MAR 23

Drawn By EG

Pike&Partners
Architects

www.pikeandpartners.com T: 020 79246257



Revisions

Do not scale off this drawing. All copyrights relating to the design work contained on this drawing to be retained by Pike & Partners Architects Ltd.

16 MURRAY ROAD, HA6 2YJ
REAR ELEVATION PHOTO

Drawing no. 23-1187-801 Rev.

Pike & Partners Architects Ltd

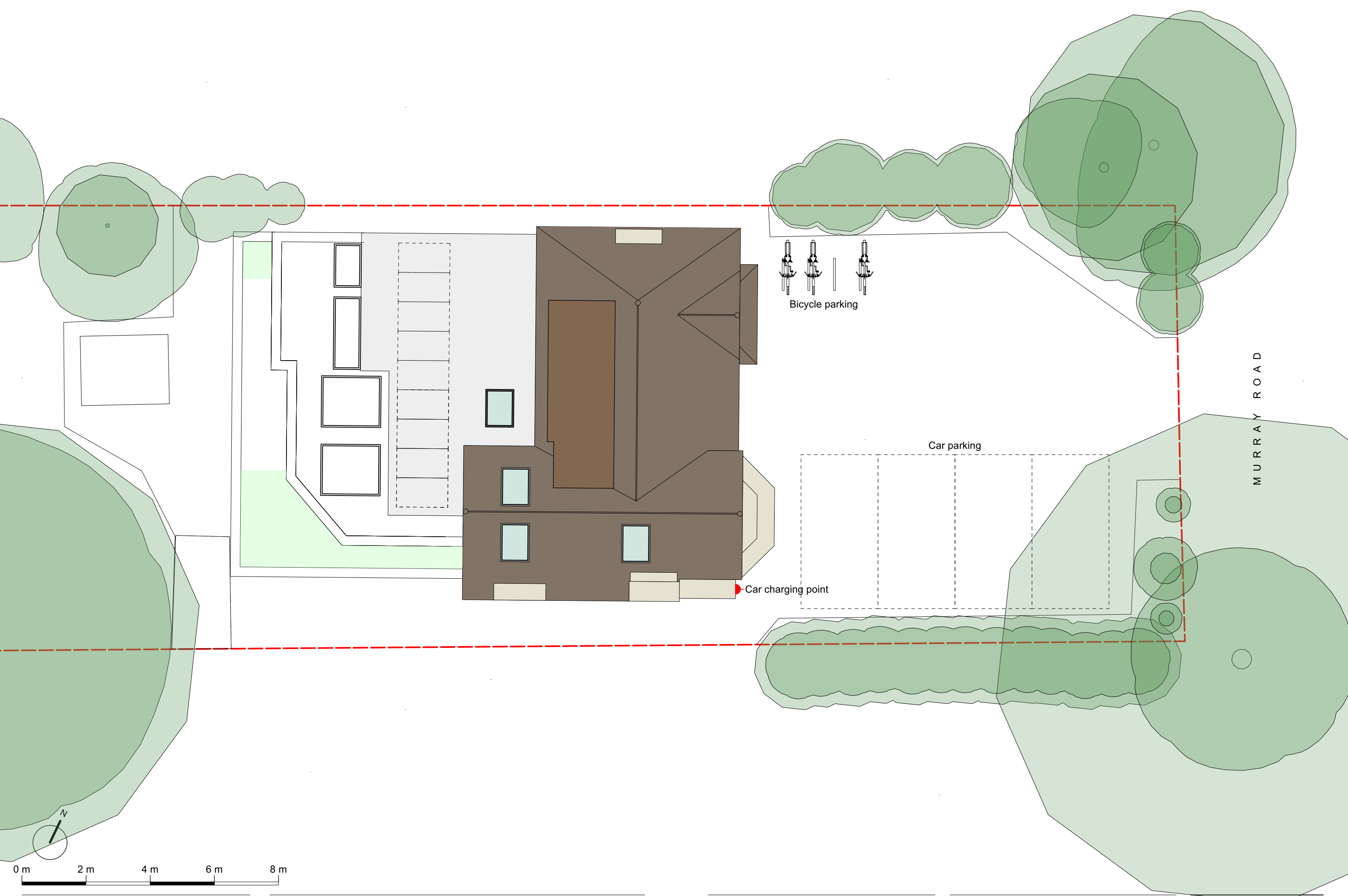
Scale
Status **PLANNING**
Client **C&M CHAPLIN-ROBERTS**

Date **MAR 23**
Drawn By **EG**

537 Battersea Park Road . London . SW11 3BL

Pike&Partners
Architects

www.pikeandpartners.com T: 020 79246257



Do not scale off this drawing. All copyrights relating to the design work contained on this drawing to be retained by Pike & Partners Architects Ltd.

Revisions

16 MURRAY ROAD, HA6 2YJ
FRONT GARDEN PLAN

Drawing no. 23-1187-802 Rev.

Pike & Partners Architects Ltd

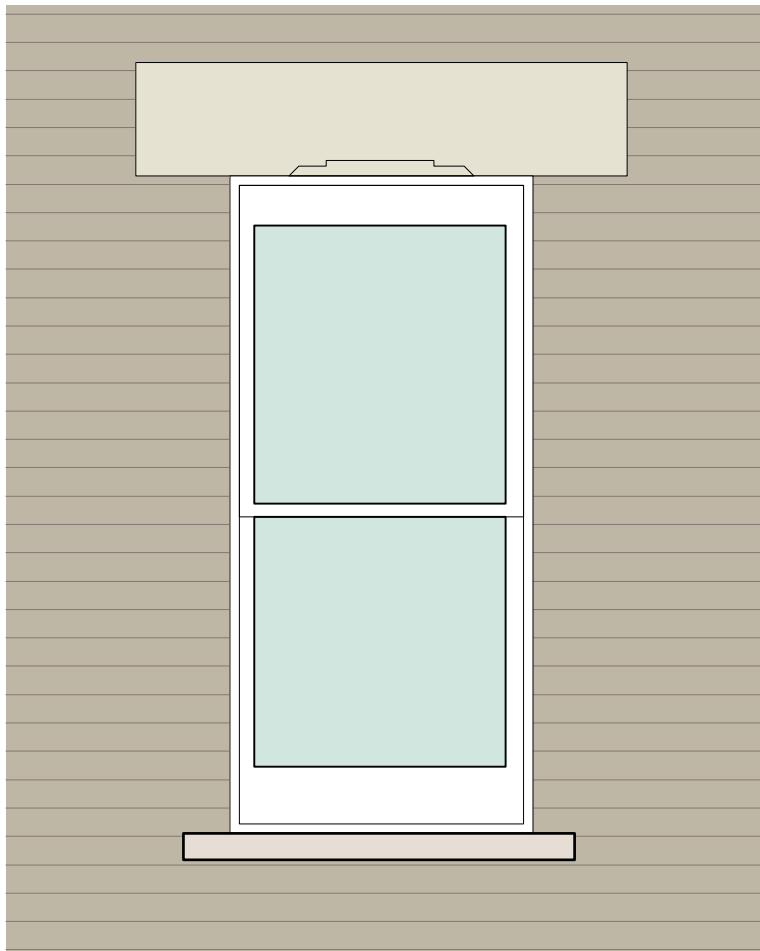
Scale 1:100 @ A3
Status PLANNING
Client C&M CHAPLIN-ROBERTS

Date MAR 23
Drawn By EG

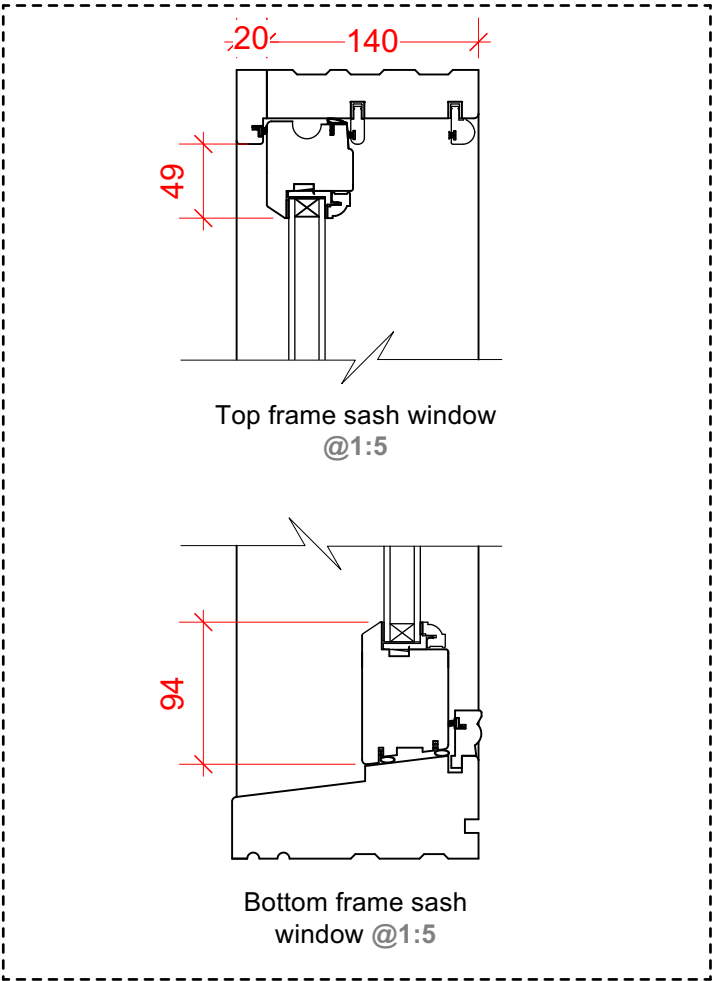
537 Battersea Park Road . London . SW11 3BL

Pike&Partners
Architects

www.pikeandpartners.com T: 020 79246257

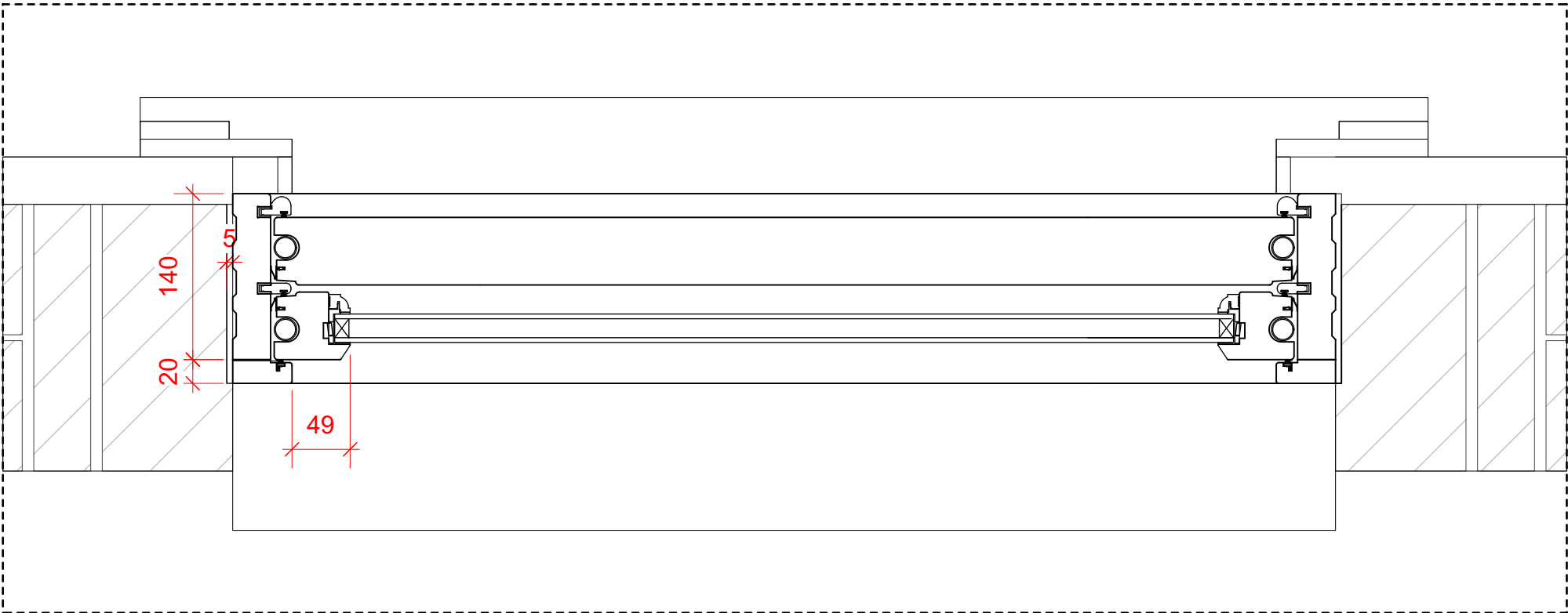


Typical sash window - **ELEVATION** @1:20

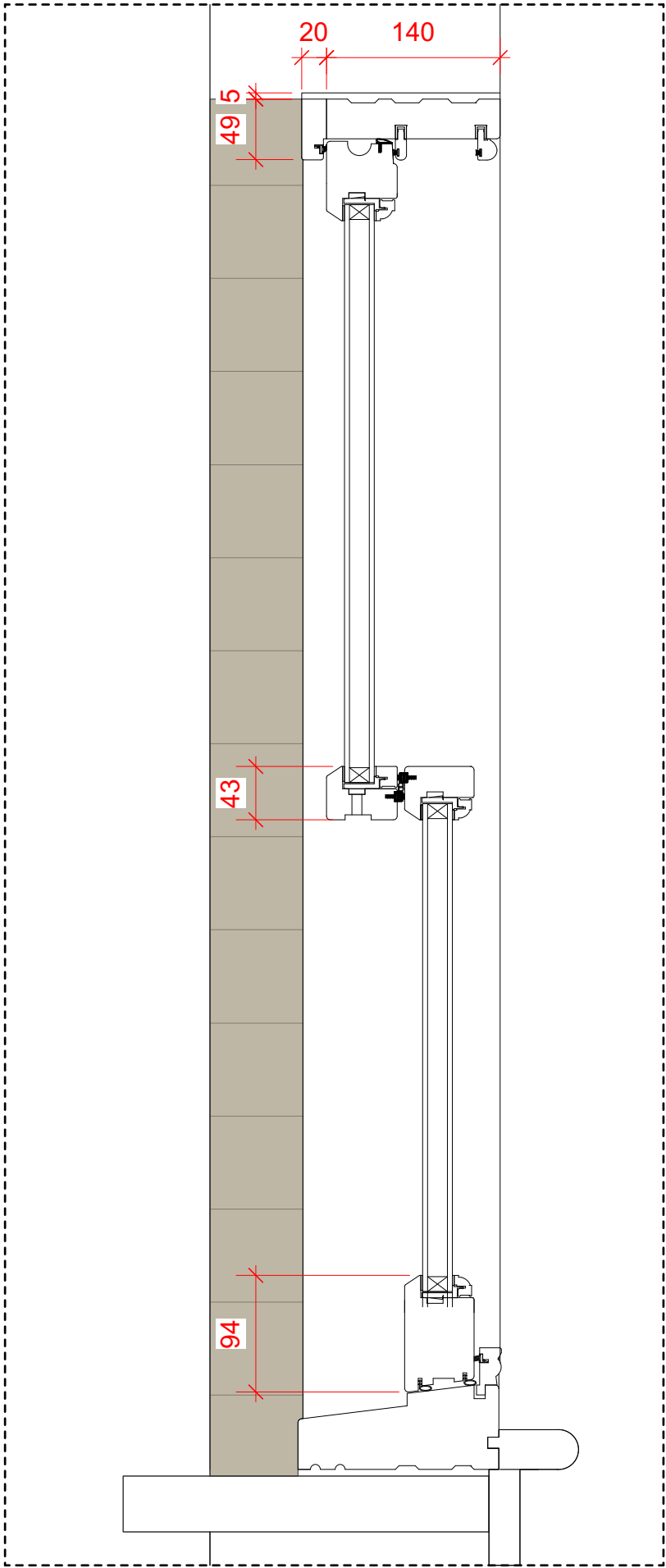


Top frame sash window
@1:5

Bottom frame sash
window @1:5



Sash window - **PLAN** @1:5



Sash window - **SECTION** @1:5