



**LUMIERE**  
CHILDREN'S HOMES LTD.

# Travel Plan

54 Beechwood Avenue  
Hayes  
Middlesex  
UB3 1JW



# LUMIERE

CHILDREN'S HOMES LTD.

1. **Introduction**
- 1.a. This report has been written for Lumiere Children's Homes Ltd.
- 1.b. This report has been created in connection with the development of a children's home (C2) to encourage sustainable means of travel to and from the development in the interests of sustainable transport usage and minimizing impact on highways as a result of the development.
- 1.c. This Travel Plan covers the following general scope of work, in accordance with Hillingdon Council's Travel Plan Guide for Developers, which requires the following:
  - a) A description of the site, its existing and proposed use, the number of employees and visitors.
  - b) An assessment of the site's travel opportunities.
  - c) Objectives through which targets can be created to measure whether progress is being made.
  - d) Details of the Travel Plan measures which are either proposed or have been implemented.
  - e) A commitment to promoting the measures and sustainable travel facilities in the local area through for example, welcome packs, facilitating resources where appropriate, utilizing online platforms and advertising on site.

## Policy Context

- 1.d. This Travel plan has been written in accordance with the following policy documents:
  - a) National Planning Policy Framework (NPPF);
  - b) National Planning Policy Guidance (NPPG);
  - c) Department of Communities and Local Government (DCLG) guidance on Travel Plans, Transport Assessments and Statements in decision-taking (2014)
  - d) Hillingdon Third Local Implementation Plan 2019-2041
  - e) Hillingdon LCWIP 2025-2026



# LUMIERE

CHILDREN'S HOMES LTD.

## 2. Travel Plan Context

- 2.a. The principles and practices of Travel Plans are widely accepted. Their need and function are incorporated into all levels of the planning process. The National Planning Policy Framework (NPPF) supports the concept of Travel Plans as they relate to management and sustainability of current and future transport demands for new developments.
- 2.b. This Travel Plan will introduce the proposed site and outline plans to sustain this.

## 3. Existing Situation

### Development proposals

- 3.a. The development is for the dwelling to become a residential home Ofsted registered residential children's home (C2). There is minimal development required to the site as it will be operating akin to a family dwelling.

### Local Highway Network

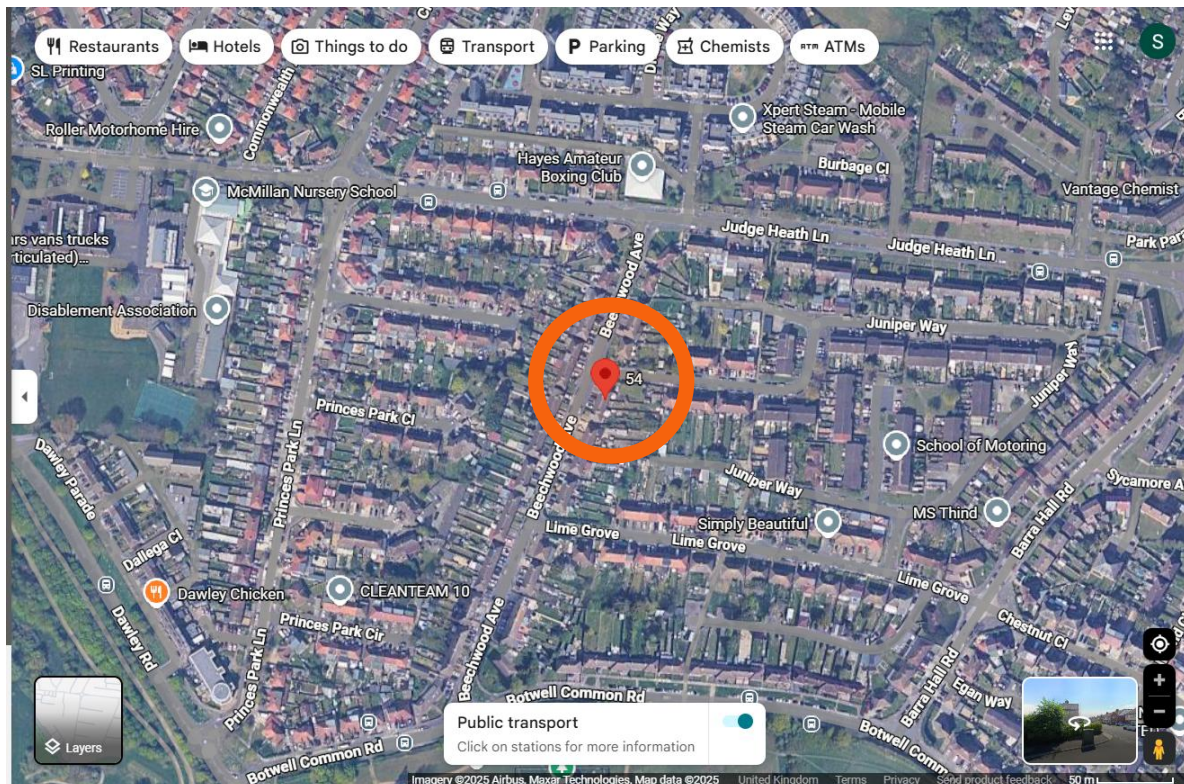
- 3.b. The site is accessed from Botwell Common Road and Judge Heath Lane, both minor roads with a 30mph speed limit and 20 mph in some areas. The site location is shown below in Figure 3.1.

Figure 3.1 Site Location



# LUMIERE

CHILDREN'S HOMES LTD.



3.c. Beechwood Avenue is a quiet residential road with homes on both sides. The home has a paved driveway and set back from the street. There are sidewalks on the main street, in the immediate vicinity and general area.

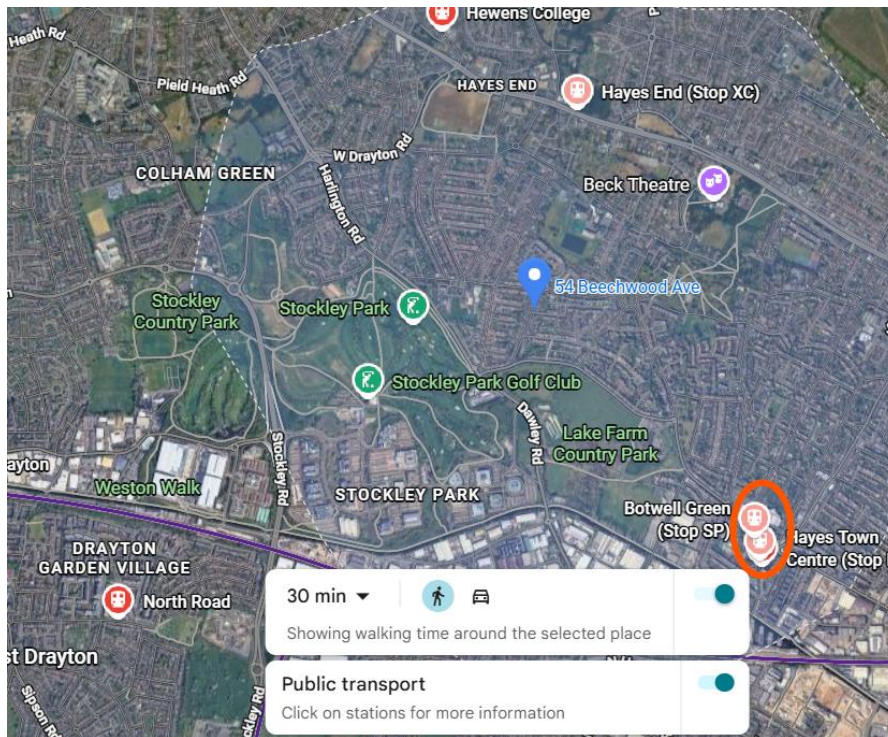
## Rail Services

3.d. The closest railway station to Beechwood Avenue, Hayes, Middlesex, UB3 1JW is Hayes & Harlington, approximately 1.1 miles away and West Drayton approximately 1.7 miles away.



# LUMIERE

CHILDREN'S HOMES LTD.



3.e. Services at Hayes are operated by TFL/Elizabeth Line. Hillingdon is served by the Central, Metropolitan and Piccadilly Lines, operated by Transport for London. The Metropolitan Line serves the north of the borough with two branches that separate between Harrow on the Hill and West Harrow, the southern branch serves Uxbridge and the northern branch Northwood. Both branches connect the borough to Central London. The Piccadilly Line also has two branches which separate at Rayners Lane. The southern branch serves Heathrow and the northern branch Ruislip and Ickenham terminating in Uxbridge town centre. The Central Line crosses the centre of the borough in an east west alignment.

Two trains per hour serve West Drayton, Langley, Slough, Burnham and Maidenhead. Eight trains per hour serve Ealing Broadway, Southall and Hayes & Harlington.

3.f. There are 121 parking spaces and collection and drop off points. Other station facilities are step-free access, public WIFI, ticket machines, accessible toilets, lifts, taxis and help



# LUMIERE

CHILDREN'S HOMES LTD.

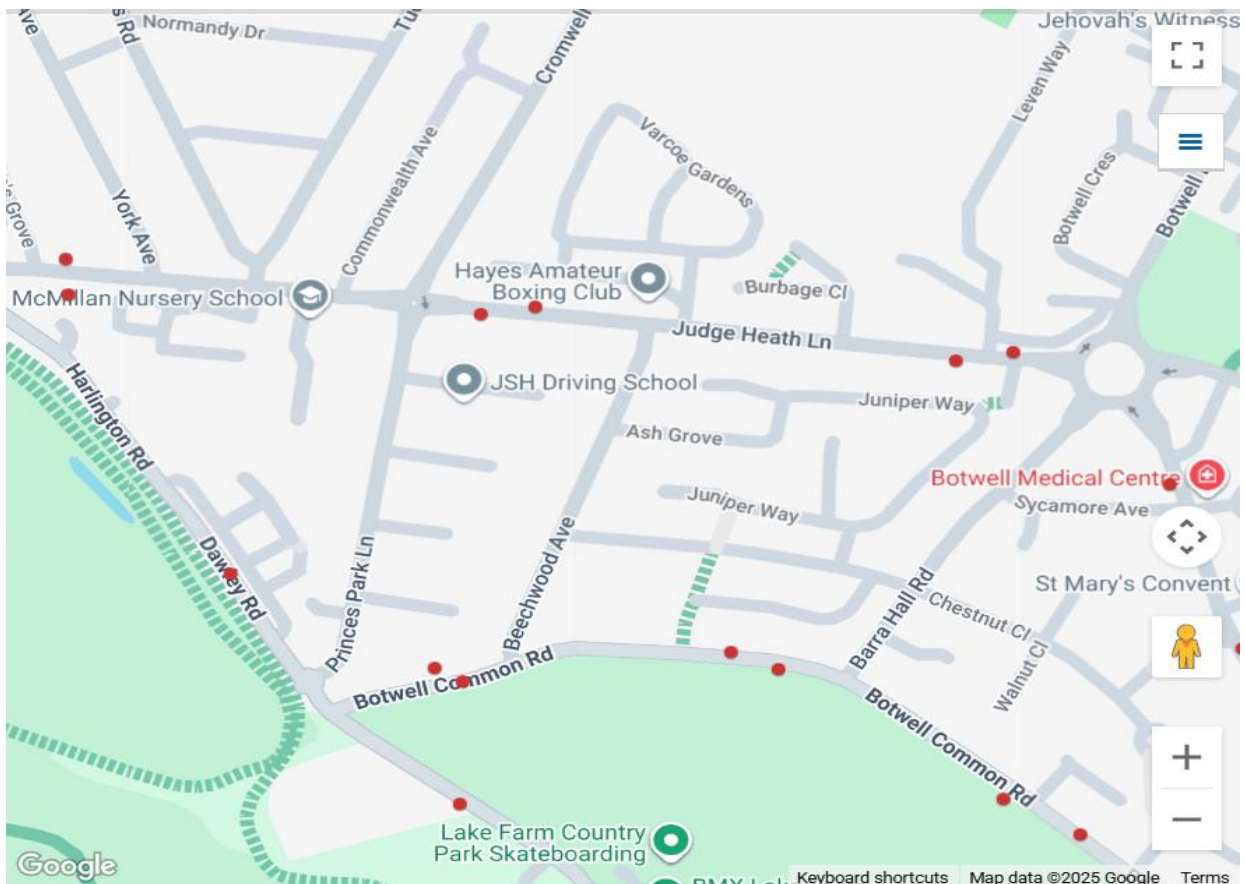
points.

## Bus Services

3.g. The bus stop nearest to 54 Beechwood Avenue is 0.1 miles away (3 mins walk)

The bus stop locations are shown below in Figure 3.2 and bus service details are shown in Table 3.3.

Figure 3.2: Nearest Bus Stops to the Home (marked in red)





# LUMIERE

CHILDREN'S HOMES LTD.

3.3 – Bus schedules will be provided for staff through TFL website/app

<b>-&gt;S</b> Corwell Gardens A10 U4 >	<b>-&gt;S</b> Dawley Parade A10 >
<b>SH</b> Botwell Common 350 U4 >	<b>G</b> Orwell Close 350 >
<b>G</b> The Square 350 A10 U5 >	<b>C</b> Sycamore Avenue U4 >
<b>E</b> The Square 350 A10 U5 >	<b>SG</b> Orwell Close 350 >
<b>XP</b> Wood End Green Road H98 >	<b>SC</b> Willenhall Drive U4 >
<b>-&gt;N</b> Goulds Green A10 U4 >	<b>-&gt;W</b> Wood End Park School U4 >
<b>XQ</b> Hanover Circle H98 >	<b>-&gt;E</b> Wood End Park School U4 >
<b>J</b> Printing House Lane 350 U4 >	<b>H</b> Botwell Common 350 >
<b>XN</b> Hanover Circle H98 >	<b>D</b> Botwell Common U4 >



# LUMIERE

CHILDREN'S HOMES LTD.

<b>J</b>	<b>Printing House Lane</b> 350 U4	>	<b>D</b>	<b>Furzeground Way</b> 350 A10 U5	>
<b>XN</b>	<b>Hanover Circle</b> H98	>	<b>XE</b>	<b>Park Road</b> 278 427 697 698 H98 N207	>
<b>SJ</b>	<b>Printing House Lane</b> 350 U4	>	<b>H</b>	<b>Furzeground Way</b> 350 A10 U5	>
<b>XR</b>	<b>York Avenue</b> H98	>	<b>SM</b>	<b>Townfield Road</b> 195 278 698 H98	>
<b>SL</b>	<b>Longmead Road</b> 195 278 698 H98	>	<b>M</b>	<b>Townfield Road</b> 195 278 698 H98	>
<b>L</b>	<b>Freemans Lane</b> 195 278 698 H98	>	<b>XF</b>	<b>Hayes End</b> 278 427 697 698 H98 N207 SL8	>
<b>-&gt;S</b>	<b>Swallowfield Way</b> U5	>	<b>XC</b>	<b>Hayes End</b> 278 427 697 698 H98 N207 SL8	>
<b>-&gt;N</b>	<b>Swallowfield Way</b> U5	>	<b>XD</b>	<b>Park Road</b> 278 427 697 698 H98 N207	>
<b>XM</b>	<b>York Avenue</b> H98	>			

## 4. Travel Plan Objectives and Measures

### 4.a. Key objectives of travel plans are to:

- Allow staff to have an informed choice about their travel options.
- Minimize the environmental impact of transport use, including the contribution to local air quality.
- Maximize use of sustainable transport modes for all journeys and;
- Encourage active travel (walking and cycling) as a major contributor to improving the health and well-being of residents in addition to reducing car emissions.

### 4.b. Various measures can influence more sustainable travel choices. Travel Plans require relative approaches in line with use and scale of development. A list of possible measures appropriate to the development site is provided below (5.d)



# LUMIERE

CHILDREN'S HOMES LTD.

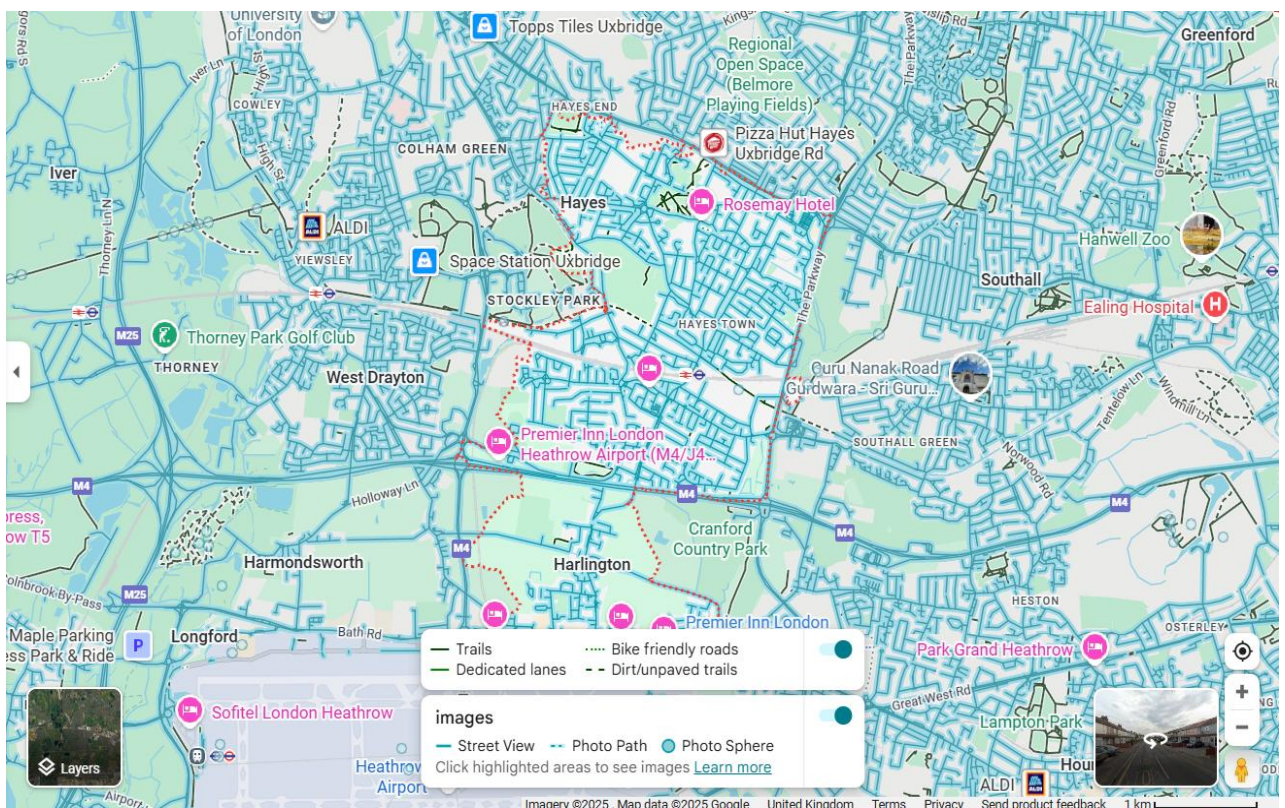
## 5. Summary

- 5.a. This Travel Plan has been prepared for the proposed development of a children's home at 54 Beechwood Avenue, Hayes, Middlesex UB3 1JW.
- 5.b. New staff shall receive a copy of this Travel Plan at the induction stage. This contains information on public transport availability and alternative travel choices.
- 5.c. The shift to non-car travel can also be achieved by the promotion of bus travel and cycling.
- 5.d. This Travel Plan helps to raise awareness of public transport facilities in the area and to consider the benefits of car sharing where possible or appropriate. Alternatives to single-occupancy car use and reducing its impact include:
  - a) Bus and rail services are offered in the local vicinity.
  - b) Car sharing opportunities such as Liftshare. Access to online platforms and support to participate will be provided.
  - c) Cycle to Work Scheme. We will support staff to obtain and use a bike as a means of travel to work.
  - d) Encouraging active travel by walking as a major contributor to health and wellbeing.



**LUMIERE**  
CHILDREN'S HOMES LTD.

## Cycle routes





# LUMIERE

CHILDREN'S HOMES LTD.

