



DO NOT SCALE this drawing. Use figured dimensions only.
The Contractor must check & verify all dimensions on site.
Any discrepancies must be reported immediately to the Engineer for clarification before proceeding.
This drawing is copyright and owned by Avocet Civil Engineering Consultancy.

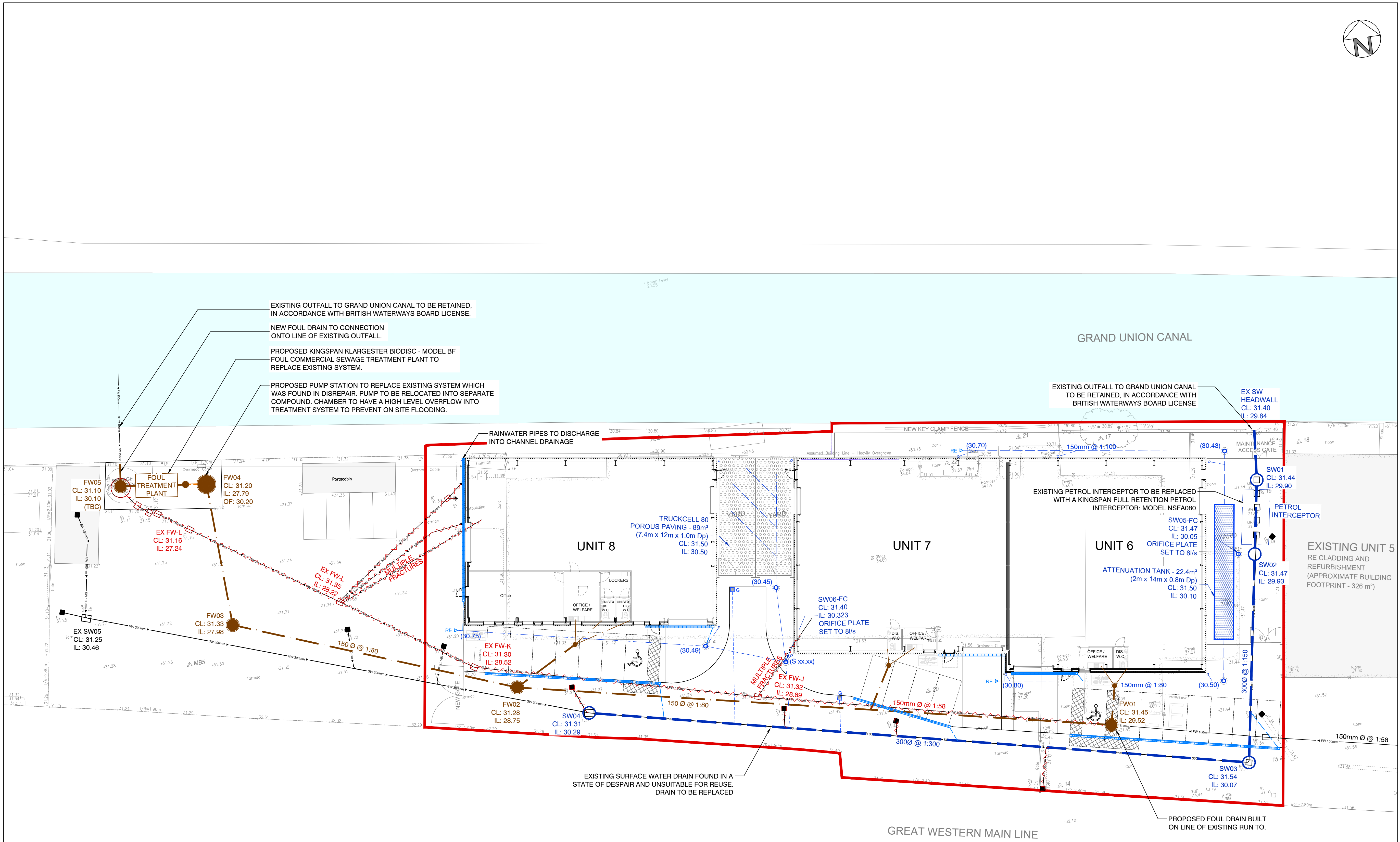
SAFETY, HEALTH AND ENVIRONMENTAL INFORMATION
Refer to the relevant Construction (Design and Management) documentation where applicable.
It is assumed that all works on this drawing will be carried out by a competent contractor, working where appropriate to an approved method statement.

LEGEND

- SITE BOUNDARY
- FOUL DRAINAGE
- FOUL RISING MAIN
- SURFACE WATER DRAINAGE
- CHANNEL DRAIN
- SURFACE WATER TYPE 3 INSPECTION CHAMBER
- POROUS PAVING
- GEOCELLULAR ATTENUATION TANK
- EXISTING DRAIN TO BE ABANDONED/GROUTED UP
- EXISTING SURFACE WATER DRAIN
- EXISTING FOUL DRAIN

SURFACE WATER AND FOUL DRAINAGE OUTFALLS INTO THE GRAND UNION CANAL TO REMAIN IN ACCORDANCE WITH BRITISH WATERWAYS BOARDS LICENCE.

DETAILS OF EXISTING DRAINAGE SHOWN OBTAINED FROM CCTV SURVEY UNDERTAKEN BY DRAINAGE TECHNICAL SERVICES LIMITED



A02	11.10.22	BOUNDARY UPDATED	JW
A01	30.09.22	PRELIMINARY ISSUE	JW
Rev	Date	Description	By
Client			

BERRITE LIMITED

Project
BERRITE WORKS,
WEST DRAYTON

Title

PROPOSED DRAINAGE LAYOUT

INFORMATION

Drawn	Checked	Approved	Date	Scale @ A1
JW	HT	VW	SEP 2022	1:200
Project No.	Drawing No.	Revision		
AVO-22034	CIV-100	A02		



www.avocetcivils.co.uk | enquiries@avocetcivils.co.uk
Company Registered in England and Wales No. 10819923

IN PARTNERSHIP WITH
MORGAN STRUCTURAL LIMITED



0m 5 10 15 20
SCALE 1 : 200