

Condition 11 Materials

Proposed New Units
Berrite Estate
Industrial Estate
Iron Bridge Road
Hillingdon

Application Number:
45237/APP/2022/3398

1.0 Introduction

- 1.1 This report has been produced to discharge condition 11 of approved planning application 45237/APP/2022/3398.

1.2 Project Information

Applicant: Berrite Estate Ltd.

Agent: Mr Ian Williams

Application Number: 45237/APP/2022/3398

Site Address: Berrite Estate Industrial Estate, Iron Bridge Road

Proposal: Replacement of existing warehouse with 3 new warehouses.

1.3 Condition 11

Prior to the commencement of above ground construction works for the development, details of all materials and external surfaces for the development shall be submitted to and approved in writing by the Local Planning Authority, in consultation with the Canal and River Trust. This shall include samples of the facing and roofing materials.

Thereafter the development shall be constructed in accordance with the approved details and be retained as such.

FACING BRICKWORK

System: Facing brickwork
Colour: London Weathered Yellow



PEDESTRIAN DOOR

System: Steel frame and leaf powder coated external doors.

Colour: Light Grey - RAL 7035



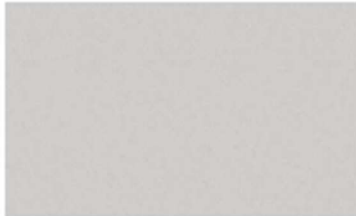
Oyster (RAL 7035)



OVERHEAD DOOR

System: Insulated sectional overhead door.

Colour: Light Grey - RAL 7035



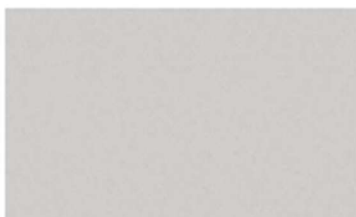
Oyster (RAL 7035)



ROOF

System: Euroclad Elite 2 Range using EC 32-167-1000 Roof external steel profile.

Colour: Light Grey
- Oyster RAL 7035



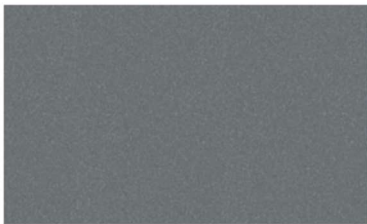
Oyster (RAL 7035)



VERTICAL PROFILES METAL CLADDING - Colour 1

System: EuroClad - Elite 58

Colour: Mid Grey
- Slate Grey RAL 7012



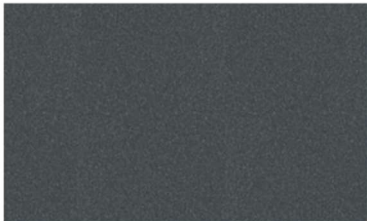
Slate Grey (RAL 7012)



VERTICAL PROFILES METAL CLADDING - Colour 2

System: EuroClad - Elite 58

Colour: Dark Grey
- Anthracite RAL 7016



Anthracite (RAL 7016)



VERTICAL CORNER FLASHING

System: EuroClad - Elite 58

Colour: Mid Grey

- Slate Grey RAL 7012



Slate Grey (RAL 7012)

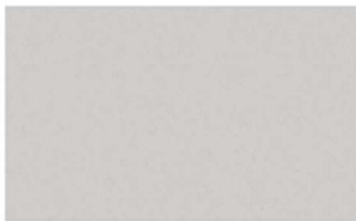


HORIZONTAL PROFILES METAL CLADDING

System: EuroClad - Elite 54

Colour: Light Grey

- Oyster RAL 7035



Oyster (RAL 7035)

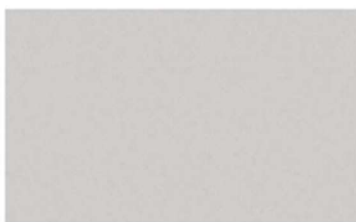


FASCIA AND SOFFITS

System: Aluminium powder coated

Colour: Light Grey

- Oyster RAL 7035



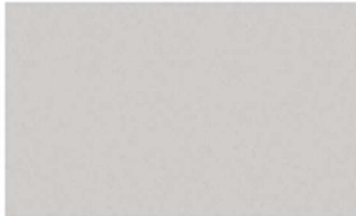
Oyster (RAL 7035)



DOWNPIPES AND GUTTER

System: Euroclad aluminium gutters and downpipes

Colour: Light Grey
- Oyster RAL 7035



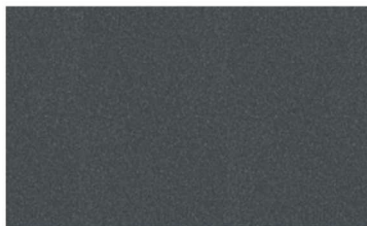
Oyster (RAL 7035)



HORIZONTAL FLASHINGS

System: Plastic euro clad gutters and downpipes aluminium

Colour: Anthracite - RAL 7016



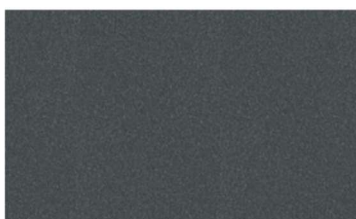
Anthracite (RAL 7016)



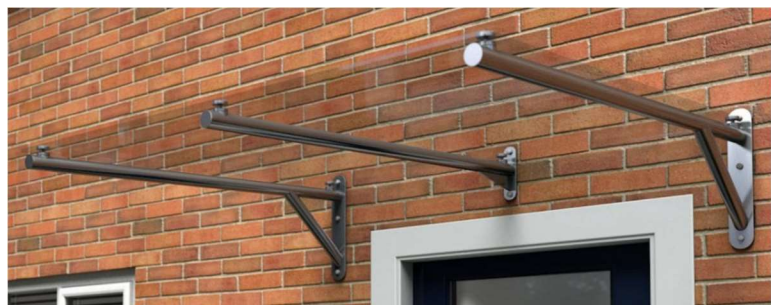
PEDESTRIAN ENTRANCE CANOPY

System: Mild steel powder coated

Colour: Anthracite Grey
- RAL 7016



Anthracite (RAL 7016)



CONCRETE HARD STANDING

System: Concrete hard standing

Colour: Natural Grey



POROUS PAVING

System: Truckcell 80 porous paving

Colour: Grey with grey gravel fill



PERMEABLE BLOCK PAVING

System: Pencil edge priora permeable block paving

Colour: Charcoal



