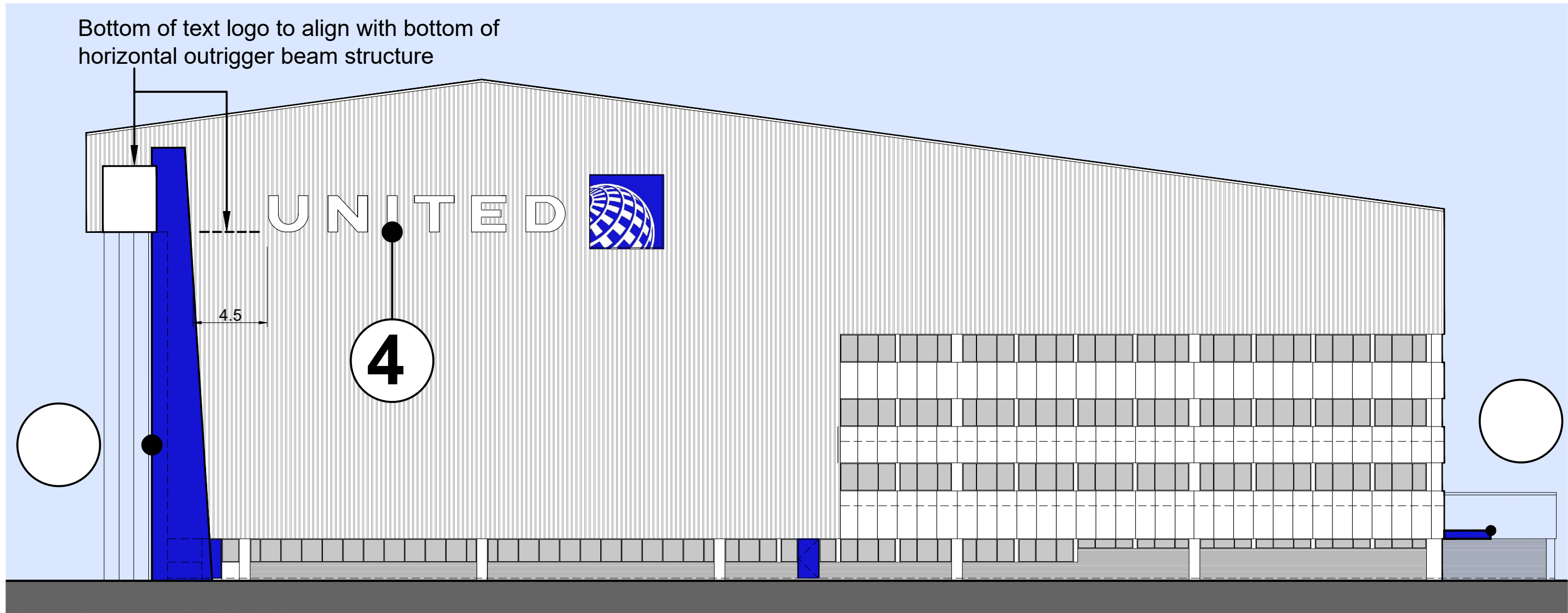
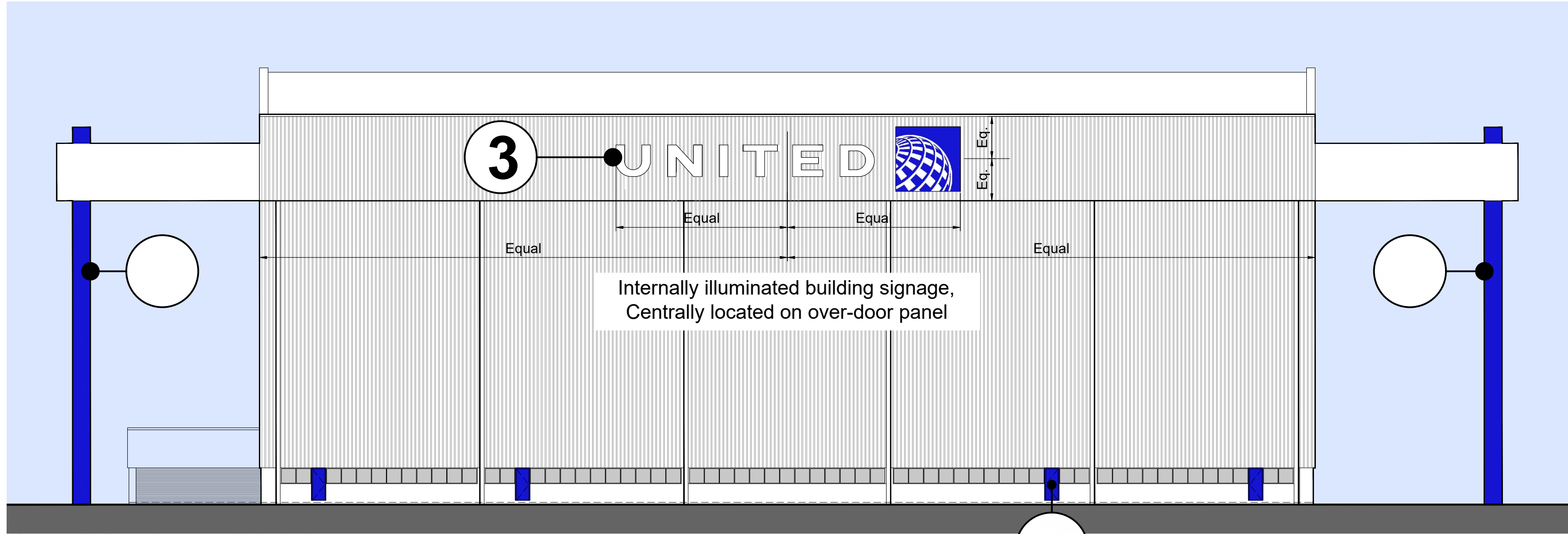


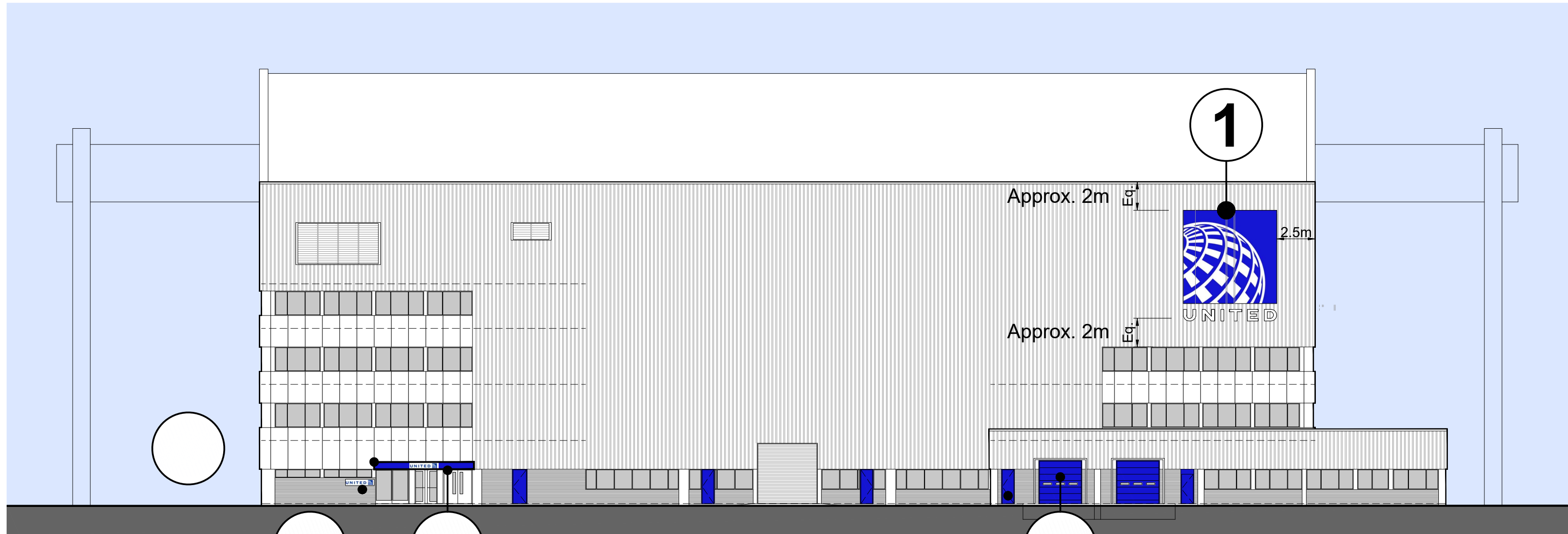
East Elevation



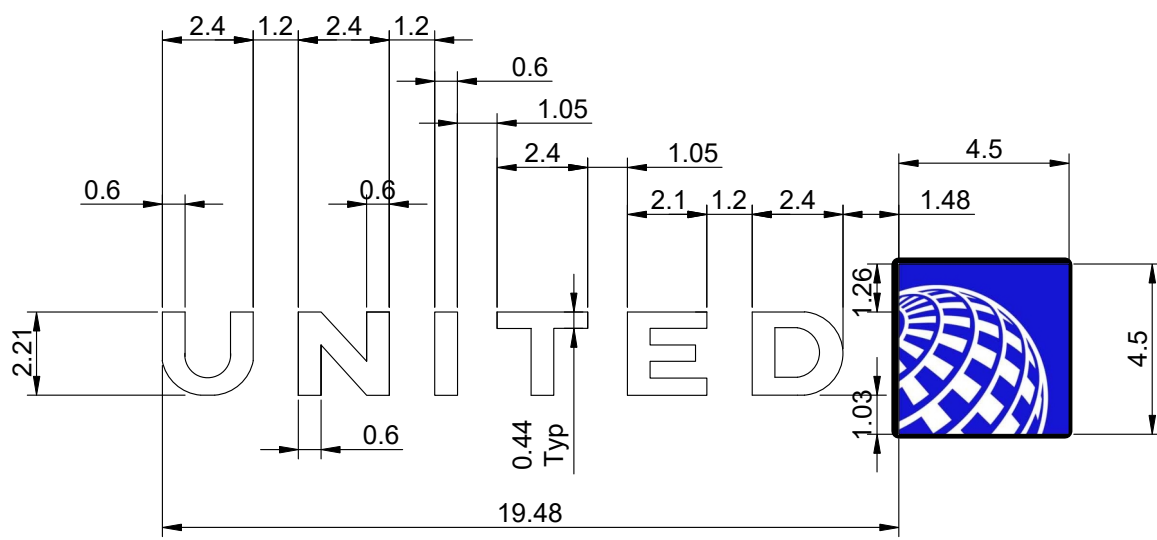
West Elevation



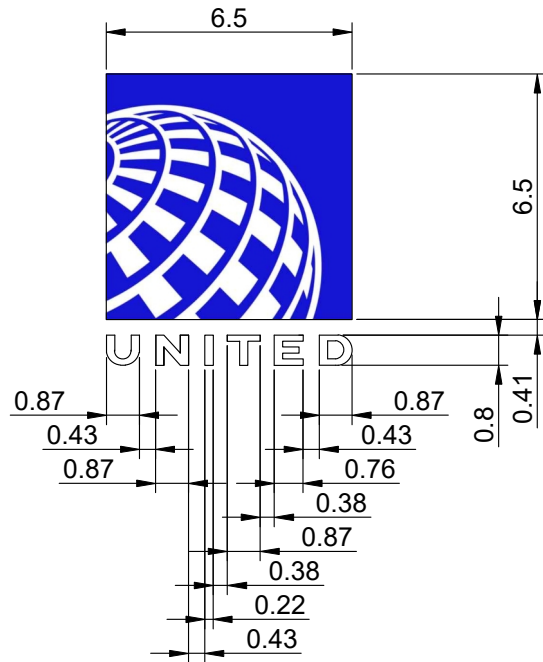
North Elevation



South Elevation



Sign 3 and 4



Sign 1 and 2

- Notes:
- (1) This drawing has been prepared from a basic survey and is suitable for high level space planning works only.
 - (2) All setting out critical dimensions and levels shall be verified on site before proceeding with detailed design or construction work.
 - (3) Details of existing services and service installations including drainage are not covered in this survey.
 - (4) Details of existing structural elements and foundations are not covered in this survey.
 - (5) At the time of visits, some areas were inaccessible and therefore not surveyed.

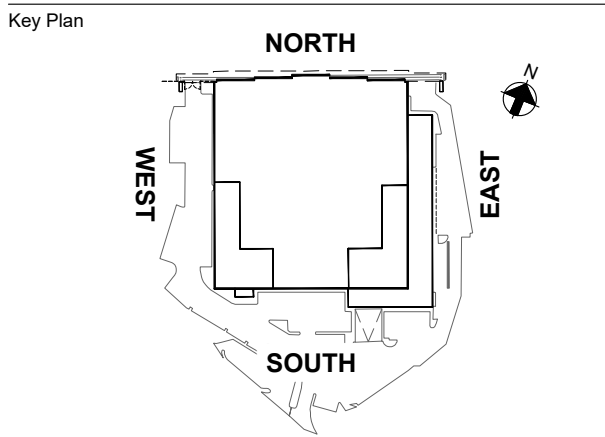
P02	19/03/24	PB	HM	HM
Issued for Planning Purposes				
P01	21/02/24	PB	HM	HM
Preliminary Issue				
Issue	Date	By	Chkd	Appd

ARUP

4 Pierhead St, Capital Waterside
Cardiff, CF10 4QP
T +44(0)29 20473727 F +44(0)29 20472277
www.arup.com

Client
United Airlines

Job Title
Hangar Refurbishment
LHR



Drawing Title
UA Hangar
Proposed Elevations
Signage

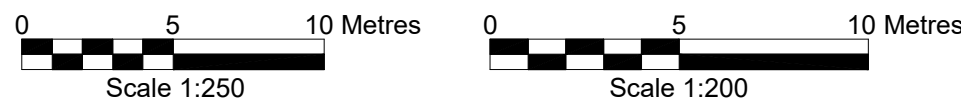
Scale at A1	1:200 Details - 1:250 Elevations
Discipline	Aviation
Job No	Drawing Status
294814	Planning
Drawing No	Issue
P-ARP-UA-DR-A-00004	P02

Legend

- 1 Sign 1 : Internally illuminated building Sign, illuminated Flex box logo with illuminated Letters to read: United
- 2 Sign 2 : Internally illuminated building Sign, illuminated Flex box logo with illuminated Letters to read: United
- 3 Illuminated letters to read: 'United' and Illuminated Flex box logo
- 4 Illuminated letters to read: 'United' and Illuminated Flex box logo

Colour

United Blue
Pantone 2388C
RGB 20, 20, 210
CMYK 100C, 70M, 0Y, 0K



Proposed Elevations - Signage