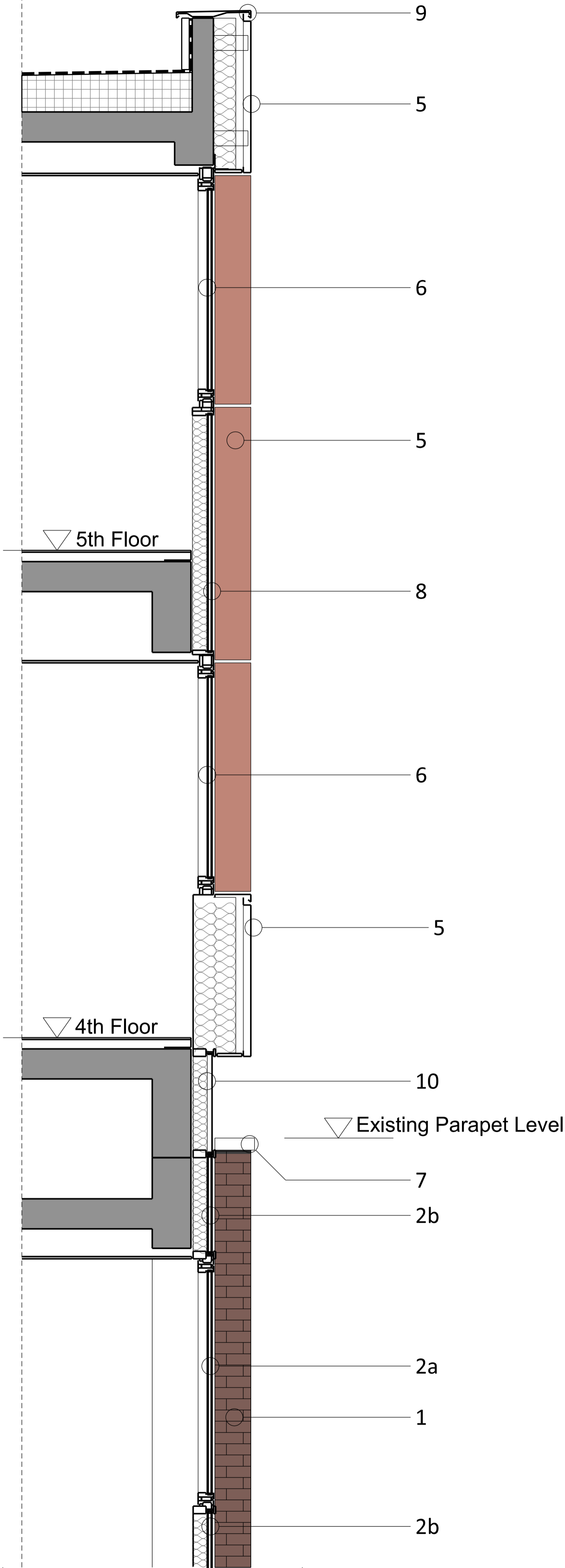
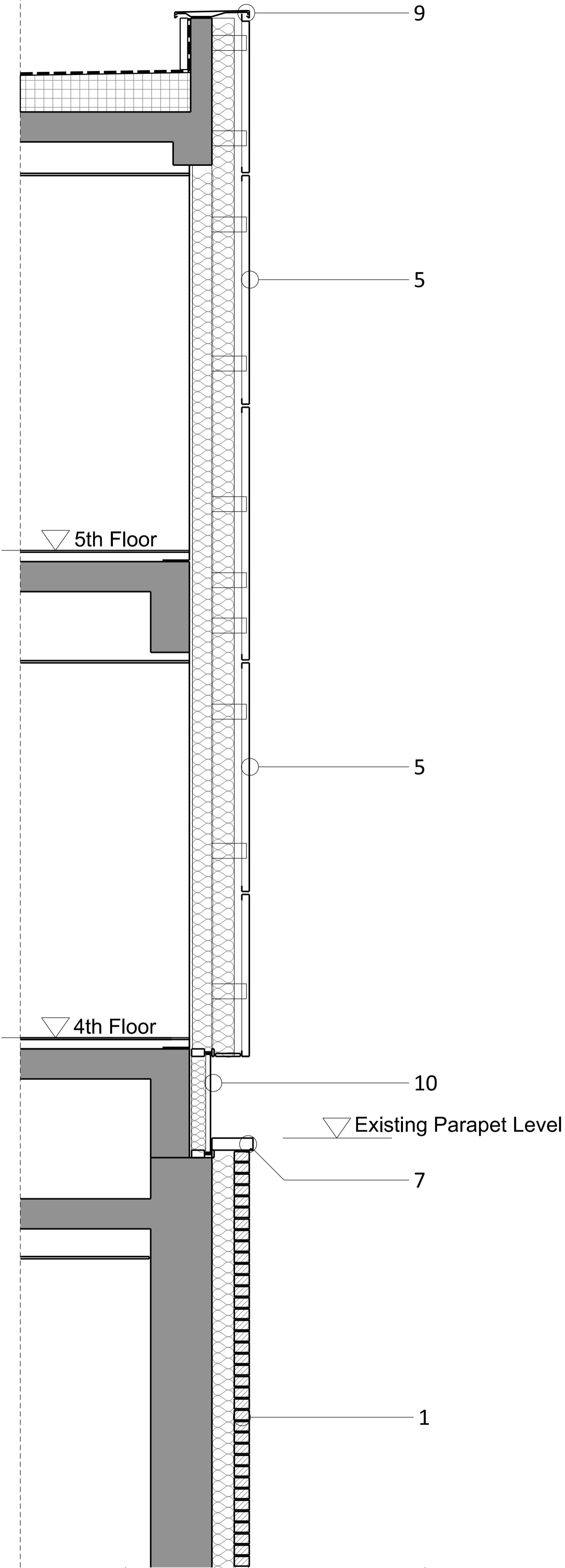


Section 1 Detail



Section 2 Detail



- Facade material key:
- 1. Existing brown brick cladding
 - 2a. Existing dark grey curtain wall with transparent glass
 - 2b. Existing dark grey curtain wall with glass faced opaque spandrel panel
 - 3. Existing white metal canopy
 - 4. Existing grey concrete stair
 - 5. Proposed dark bronze metal rainscreen cladding
 - 6. Proposed grey metal windows, profile width to match existing windows
 - 7. Light grey concrete parapet coping
 - 8. Glass faced opaque spandrel panel
 - 9. Light grey parapet coping
 - 10. Dark grey metal cladding

0.5m 2m