

**NOTES**  
**Copyright:** This drawing is the property of Bradford-Smith Landscape Architect. It must not be copied or reproduced or passed to a third party without written consent of Bradford Smith Ltd.  
**Dimensions:** Only figured dimensions are to be taken from this drawing. All contractors must visit site and be responsible for taking and checking all dimensions related to the works shown on the drawing. All levels in meters.  
**Utilities/Highways/Environment:** It is the responsibility of the client or their contractor to liaise with Utility Providers, Highways Authority's and Environment Agency and to ensure that all approvals are in place. It is the responsibility of the contractor to locate all underground services prior to construction.  
**Drawings:** All drawings and levels to be checked on site prior to the construction works commencing on site. All drawings shall be read in conjunction with relevant landscape specifications.  
**Discrepancies:** Any discrepancy on the drawings shall be referred to the CA immediately.

LEGEND

SOFT LANDSCAPING WORKS

- Proposed Large Shrub Planting:**  
Refer to drawing no 887-GA-02
- Proposed Clipped Wall Shrubs Planting:**  
Refer to drawing no 887-GA-02
- Proposed Structure / Hedgerow Planting:**  
Refer to drawing no 887-GA-02
- Proposed Mixed Ornamental Shrub and Herbaceous Planting:** Refer to drawing no 887-GA-02
- Proposed Clipped Instant Hedgerow Planting:**  
Refer to drawing no 887-GA-02

HARD LANDSCAPING WORKS

- P1 - Existing Tarmac Surface:**  
Retained and made good where necessary.
- P2 - Tarmac Surface: Vehicular Use**  
Type: refer to Engineers details  
Build up to Engineers specifications & details.
- P3 - Tarmac Surface: Vehicular / Pedestrian**  
Type: refer to Engineers details  
Build up to Engineers specifications & details.
- P4 - Concrete paving slabs:**  
Type: Mayfair Slabs. Size: 600x600x50mm;  
Finish: Textured; non-slip; laid to falls.  
Colour: Oat; Supplied by Tobemore  
Build up to Engineers specification and details.
- P5 - Tactile Blister Concrete Paving Slabs:**  
Type: Tactile Blister Slabs. Size: 400x400x50mm;  
Colour: Natural ; Supplied by Marshalls or similar equivalent  
Build up to Engineers specification and details.
- P6 - Permeable Concrete Block Paving:**  
Type: Hydropave Fusion Permeable Paving (suitable for vehicular / pedestrian traffic); Size: 200x100x 80mm;  
Colour: Silver-Grey Textured; Supplied by Tobemore or similar equivalent to Engineers specification and details.
- P7 - Permeable Concrete Block Paving:**  
Type: Hydropave Fusion Permeable Paving (suitable for vehicular / pedestrian traffic); Size: 200x100x 80mm;  
Colour: Mid-Grey; Textured; Supplied by Tobemore or similar equivalent to Engineers specification and details.
- P8 - Gravel Trim and Maintenance Path:**  
Type: gravel  
Edge Restraint: Hardwood timber edging boards 50x 150mm with treated softwood pegs.

KERB/ EDGING TYPES

- E1 - Textured Kerb Upstand:**  
Type: Conservation X Kerb; Size: 125 x 230 x 914mm;  
Colour: Silver grey; Supplier: Marshalls - Refer to Engineers details & Specifications.
- E2 - Textured Kerb laid flush:**  
Type: Conservation X Kerb; Size: 125 x 230 x 914mm; Colour: Silver grey; Supplier: Marshalls (suitable for vehicular traffic); laid as soldier course and laid flush with adjoining hard surfaces areas; Refer to Engineers details & Specifications.
- E3 - Concrete Pin Kerb Edging:**  
Type: Pin Kerb; Size: 50mm x 150mm; Square edge  
Laid flush with paving slabs  
Refer to Engineers details & Specifications.

FENCING TYPES

- R1 - Vertical Metal Railings & Brick Wall:**  
Type: Flat Bar Railings (compliant with BS1722 part 9)  
Height: 900mm high circa. Colour: Anthracite: RAL 7016  
Supplier: Alpha Rail or similar equivalent  
Brick Wall: 300mm high x 215mm wide with header course.
- R2 - Vertical Metal Railings:**  
Type: Flat Bar Railings (compliant with BS1722 part 9)  
Height: 1200mm high circa. Colour: Anthracite: RAL 7016  
Supplier: Alpha Rail or similar equivalent
- G1 - Pedestrian Gates To Match:**  
Type: Flat Bar Pedestrian Gate to match railings (compliant with BS1722 part 9). Lockable.  
Height: 1200mm /1500mm high x 900mm wide circa - refer to plan. Colour: Anthracite: RAL 7016. Supplier: Alpha Rail or similar equivalent

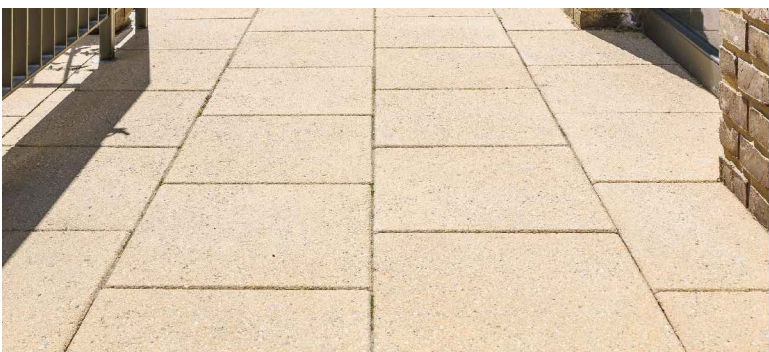
FURNITURE

- RP1 - Raised Planter**  
Type: GRP Large Troughs R16.  
Size: 1600mm long x 600mm wide and 600mm high.  
Number: 2 troughs bolted together to make one planting area.  
Provide: Gray Rope Fixings to support large shrub planting.  
Colour: Anthracite: RAL 7016. Supplier: EuroPlanters or similar equivalent



**NOTES**  
**Hard landscape details and surface drainage** - refer to Architects and Engineers details. For details on retaining structures, please refer to engineers / architects details.  
**Levels:** proposed detailed levels to be provided by Engineers details.  
**Surface finishes:** to be installed in accordance with the manufacturers instructions. All hard surfaces laid to falls.

TYPICAL IMAGES FOR THE HARD & SOFT PALETTE ON GROUND FLOOR



Concrete Paving slabs: Mayfield supplied by Tobemore or similar equivalent; Colour: sandstone; non-slip textured slabs installed in accordance with the manufacturer's instructions



Vertical Flat Bar Railings by Alpha Rail or similar equivalent. Colour: Anthracite. Height 1500mm and 1200mm high (circa)



Raised Planter supplied by Europlanters or similar equivalent. Colour: Anthracite.



Permeable Block Paving: Marshalls or Tobemore or similar equivalent; colour TBC; installed in accordance with the manufacturer's instructions

PLANNING

| REVISIONS   |          | Scale    | 1:100 @ A1                                   |
|---|----------|----------|--|
| BRADFORD-SMITH<br>LANDSCAPE ARCHITECTS  |          | Date     | 28-05-2025                                   |
| 5 Thorold Road<br>Farnham<br>Surrey<br>GU9 7JY<br>T: 01252 71 4607<br>E: mo@bradfordsmith.co.uk |          | Status   | Planning Condition I 0                       |
|   |          | Drawn by | MS   |
|   |          | Client   | JP&S Investment Ltd<br>152-154 Uxbridge Road |
| Project<br>152-154 UXBRIDGE ROAD, HAYES,<br>MIDDLESEX, UB4 0JH                                  |          |          |  |
| Drawing Title<br>LANDSCAPE SURFACE FINISHES PLAN &<br>BOUNDARY TREATMENTS - GROUND FLOOR        |          |          |  |
| Drawing Number  | Revision |          |  |
| 887-GA-01   |          |          | P1   |