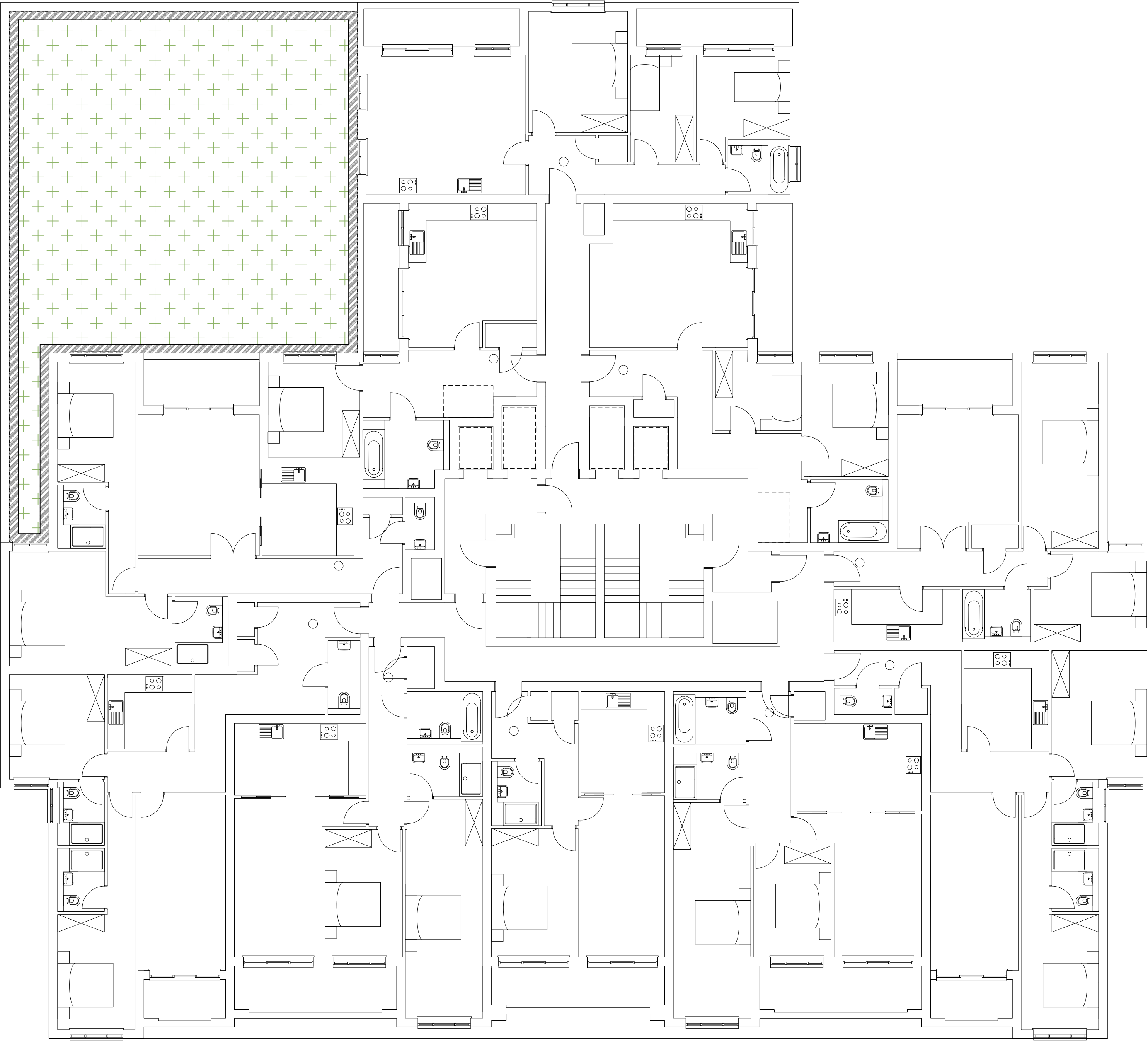


First Floor plan



Legend

- Proposed tree planting within soft landscape.
See detail 1 on sheet 2
- Proposed tree planting within raised planters to have short angular staking. Jake Cube steel planter, 1000x1000x100mm, powder coated finish, or similar and approved
- Proposed specimen shrub planting to receive short angular staking on half standards with expandable tree ties
- Proposed climbing plants to be trained up with support system as shown in detail 2 in sheet 2
- Proposed *Carpinus* (hornbeam) hedge planting to be planted in a double staggered row 300mm apart and at 500mm centres in each row. To be maintained at 1m height
- Proposed shrub planting to receive 75mm bark mulch after planting operations
- Proposed SB sedum blanket roof system, as supplied by Bauder, or similar and approved. To receive irrigation. Perimeter enclosures/ safety from falling measures to be designed by others.
- Proposed fire break margin to perimeter of sedum roof. To be 300mm wide. To be made from 20-50mm rounded pebbles, no fines, and laid to a minimum of 50mm depth on top of the drainage board. A retention angle to be included between the growing medium and fire break. Refer to Gro Green Roof Guide for details.
- Driveline Nova Coarse block paving, 300x150x50mm, in pebble grey laid in stretcher bond pattern from Marshalls or similar and approved
- Driveline Priora permeable block paving, 200x100x60mm, in brindle laid in herringbone pattern with white blocks to demarcate parking spaces from Marshalls or similar and approved
- Cropped Porphyry Setts paving, 110x110x50mm, in imperial colour, from Marshalls or similar and approved
- Areas to be laid with loose gravel, Dove Grey limestone gravel 10-14mm, or similar and approved
- Proposed Alledge aluminium edging, as supplied by ExcelEdge, or similar and approved
- Proposed Green Curtain: metal structure attached to building wall to support climber plants, as supplied by Jakob Rope Systems, see detail 2 on sheet 2.
- Proposed Featherboard fencing, 1.8m high, as supplied by Jacksons Fencing, or similar and approved.
- Proposed Desford I Seat with Backrest, product code: BX12 Desford I-BR as supplied by Broxap or similar
- Site boundary

SPECIFICATION
All works generally, to comply with the written Soft Landscape Specification.

In case of quantity discrepancies, the quantities on the plan(s) take precedent over the quantities shown in the planting schedule.

NOTES:
DO NOT SCALE FROM DRAWING
NOT FOR CONSTRUCTION, FOR PLANNING PURPOSES ONLY



Planting Schedule

Species Name	Girth	Height	Density	Specification	No.
<i>Carpinus betulus</i>	60-80cm	0.5Ctr	Double Staggered at 0.3m offset	Transplant 2x .B	Planted and maintained as hedge
<i>Liquidambar styraciflua</i> 'Gum Ball'	175-200cm	Counted		Ball on stem	Topiary Half Standard Clear Stem 80-120 Clipped
<i>Betula albosinensis</i>	10-12cm	Counted		Selected Standard	Clear Stem 175-200 4 brks 2x .RB
<i>Prunus serotina</i> 'Ibetica'	350-425cm	Counted		Heavy Standard	Clear Stem 175-200 .RB
<i>Pyrus calleryana</i> 'Chanticleer'	350-425cm	Counted		Heavy Standard	Clear Stem 175-200 .RB
<i>Acer griseum</i>	350-425cm	Counted		Heavy Standard	Clear Stem 175-200 .RB

Species Name	Height	Pot Size	Specification	Density	No.
<i>Chamaecyparis law.</i> 'Ellwoodii'	100-125cm	25-35L	Feathered to base	Single leader	Counted
<i>Juniperus communis</i> 'Compressa'	60-80cm	5L	Single leader		Counted

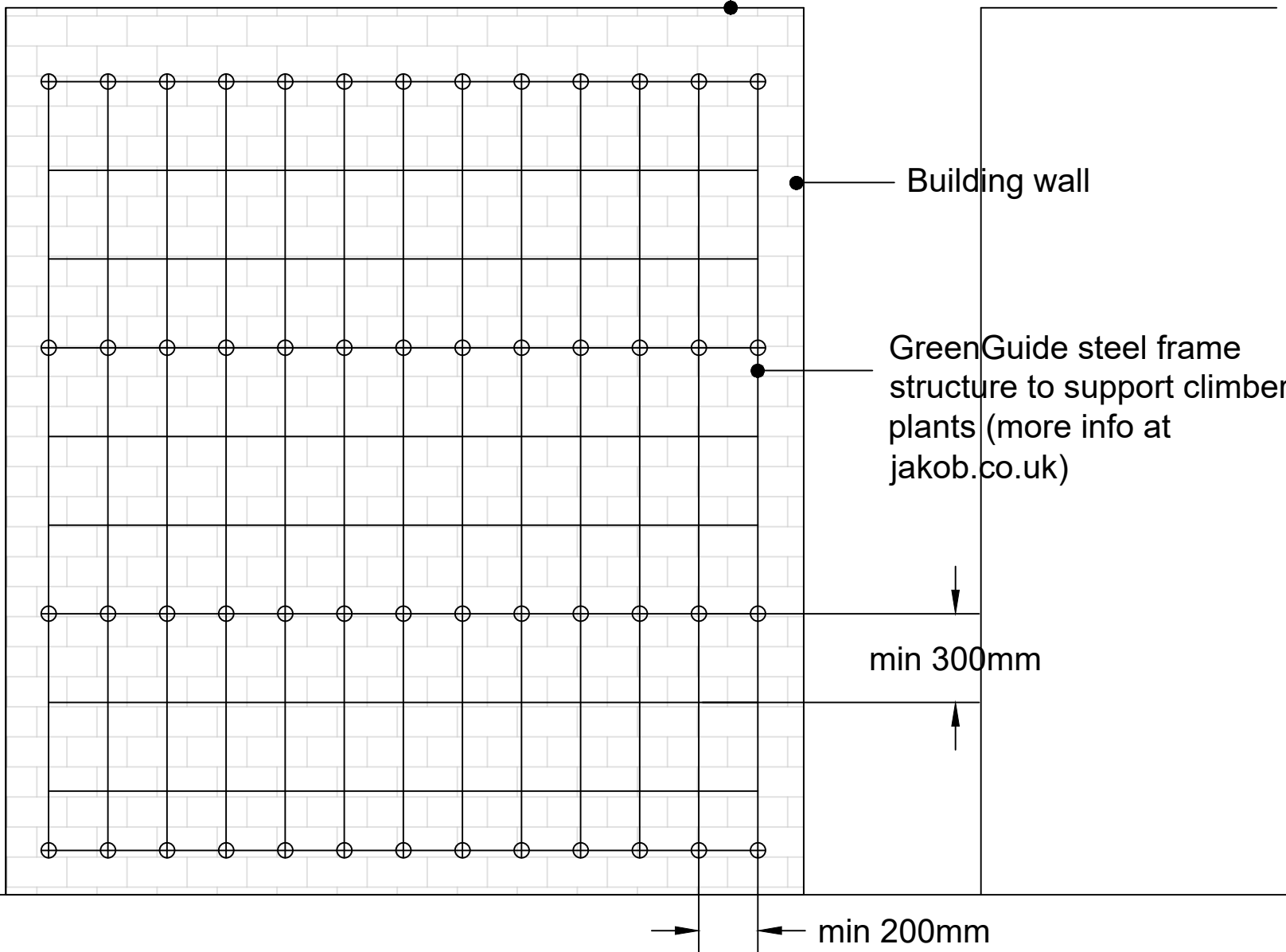
Species Name	Height	Pot Size	Specification	Density	No.
<i>Cornus sanguinea</i> 'Midwinter Fire'	80-100cm	10L	Branched .5 brks		Counted
<i>Erica carnea</i> 'Ann Sparkes'	25-30cm	2L	Bushy .C		Counted
<i>Euonymus fortunei</i> 'Emerald n' Gold'	40-60cm	5-7.5L	Topiary ball shape .6/9 brks .C		Counted
<i>Euonymus fortunei</i> 'Emerald Gaiety'	40-60cm	5-7.5L	Bushy .C		Counted
<i>Hebe</i> 'Midsummer Beauty'	30-40cm	5-7.5L	Bushy .7 brks .C		Counted
<i>Hebe pinguifolia</i> 'Pagei'	30-40cm	3L	Bushy .5 brks .C		Counted
<i>Hedera</i> 'Ereclat'	30-40cm	10L	Upright .C		Counted
<i>Lavandula angustifolia</i> 'Hidcote'	25-30cm	5L	Bushy .5/6 brks .C		Counted
<i>Phormium</i> 'Sundowner'	60-80cm	10L	Triple crown		Counted
<i>Pittosporum tenuifolium</i> 'Variegatum'	60-80cm	25L	Branched .6/9 brks		Counted
<i>Rosmarinus off.</i> 'Miss Jessop's Upright'	25-30cm	5L	Bushy .5/6 brks .C		Counted
<i>Skimmia japonica</i> 'Rubella'	25-30cm	5L	Bushy .5/6 brks .C		Counted

Species Name	Height	Pot Size	Specification	Density	No.
<i>Clematis</i> 'Hagley Hybrid'	100-150cm	10L	Several Shoots .2/3 brks	Steel frame	Counted
<i>Clematis armandii</i>	150-200cm	15-20L	Several Shoots .2/3 brks	Steel frame	Counted
<i>Jasminum stephanense</i>	100-150cm	10L	Several Shoots .5 brks	Steel frame	Counted
<i>Lonicera teilmanniana</i>	100-150cm	10L	Several Shoots .2/3 brks	Steel frame	Counted

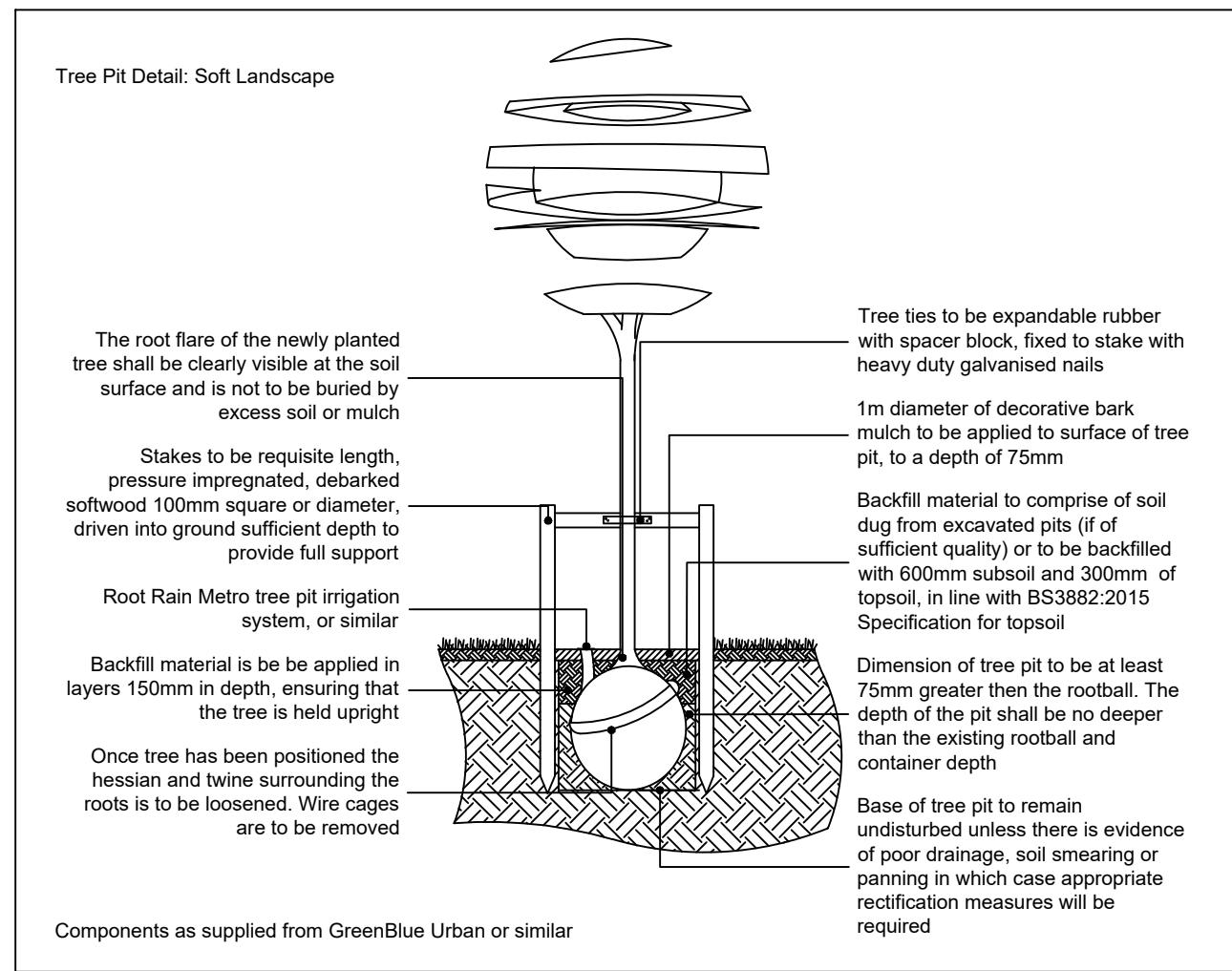
Species Name	Height	Pot Size	Specification	Density	No.
<i>Calamagrostis acutiflora</i> 'Karl Foerster'	10L	Full Pot		Counted	5
<i>Calamagrostis acutiflora</i> 'Karl Foerster'	10L	Full Pot		Counted	19
<i>Carex morrowii</i> 'Ice Dance'	5L	Full Pot		Counted	123
<i>Deschampsia cespitosa</i> 'Goldschleier'	5L	Full Pot		Counted	5
<i>Festuca glauca</i> 'Elijah Blue'	5L	Full Pot		Counted	81
<i>Stipa tenuissima</i> 'Pony Tails'	10L	Full Pot		Counted	9

Detail 2: Green Curtain

Scale 1:20



Detail 1



HEAD OFFICE
Rodbourne Rail Business Centre, Grange Lane,
Malmesbury, SN16 0ES
Tel: 01666 825646

4 & 5 The Old Mill, Fry's Yard, Bridge Street,
Codalming, GU7 1HP
Tel: 01483 425714

Suite 6, Crescent House, Yonge Close,
Eastleigh, SO50 9SX
Tel: 02382 026300

email: mail@acdenv.co.uk
www.acdenvironmental.co.uk

scheme: Land West of Axis
House, Heathrow

client: Acre Hotels LTD

drawing: Soft & Hard Landscape
Proposals

date: September 2023

scale: 1:100@A1

drawing no: PRI24372 11 Sheet 2 of 2

drawn: AD checked: JS

Copyright of ACD Environmental Ltd. All rights described in Chapter IV of the Copyright, Designs and Patents Act 1988 have been generally asserted. 2011. Copyright of this plan remains with ACD until all fees have been paid in full.