

MAPLE & POPLAR DEVELOPMENT

Tree Root Protection Method Statement



Revision	By Whom	Date	Comments
A	Mark Shambrook	28 th May 2024	



MAPLE & POPLAR TREE PROTECTION MS

CONTENTS

- 1. Comments by LBH Landscape Specialist**
- 2. Planning Condition History & Site Works**
- 3. Fencing Works**
- 4. Tree Protection Plan**
- 5. Fencing Position**
- 6. Installation Method Statement**

Appendices

- A – Fencing Plans
- B – Tree Protection Zone Plan

1. Comments by LBH Landscape Specialist

The below comments were received via Ed Laughton on the 9th May 2024 which he received from the London Borough of Hillingdon Landscape Specialist.

The information provided indicates a 2m high fence edging the public rights of way and 2.5m acoustic fence. The fence goes close to the trunk of an existing tree and within the Root Protection Zones (RPZ) of existing trees. Where fencing is agreed within RPZs, a method statement needs to be provided to ensure these footings will not damage the roots of the trees/hedgerow. The method statement should include:

- A plan showing the exact location of the footings;*
- Confirmation all post holes will be excavated by hand and kept as narrow as possible (maximum diameter 300mm).*
- Exploratory post holes will be dug before committing to post / panel positions. If any roots in excess of 25mm are encountered they are to remain intact and the post hole shall be relocated slightly. The fencing system must permit such flexibility, all post holes must be excavated before committing to the final location).*
- Any roots in excess of 10mm which are severed shall be neatly pruned back with secateurs. This will encourage healing and reduce the likelihood of infection.*

A commitment should be made that an arboriculturist will oversee this work to ensure the works are carried out in accordance with the method statement.

Further, there is discrepancy between the Landscape detailed Planting Plan Sheet 1 and 2 nos. PJC – 1136.002 and the AWW Landscape Plan drawing no. 4578 AWWXX00DRA02251 P01. The AWW drawing shows all the areas beyond the proposed defensible planting as 'Existing boarder planting to be retained' while the PJC Consultancy drawing show large parts of these areas with proposed grass works. Clarification is required on which drawing is correct. Lastly, the specification of the boundary treatments with images should be provided.

2. Planning Condition History & Site Works

The landscaping design submission (planning condition 5) was originally submitted on the 30th May 2023, and then re-submitted on the 4th October 2023, but has yet to be discharged.

The discharge of this condition has been chased up till this point and now that Ed Laughton is involved is being reviewed and close to discharge which is great.

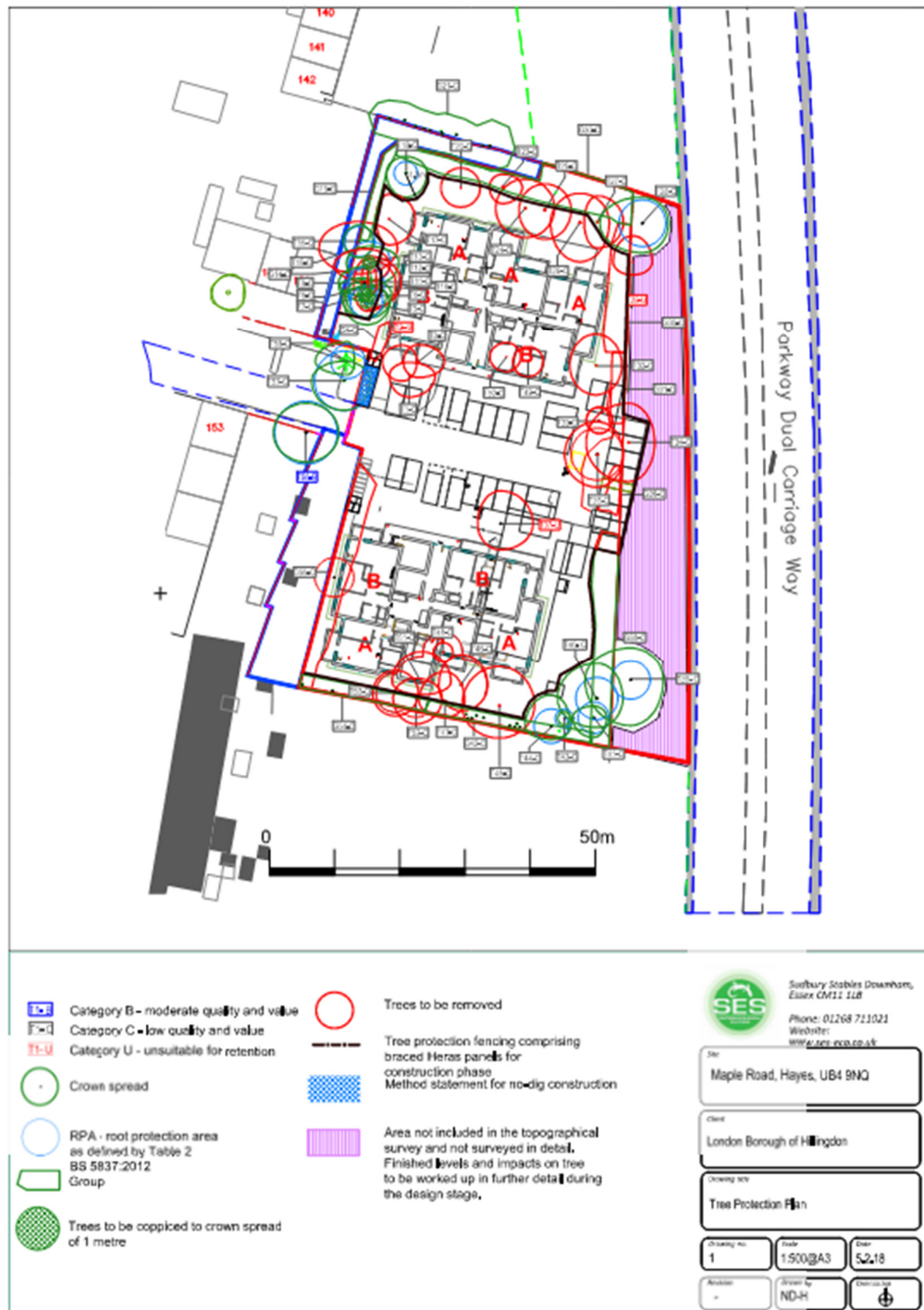
As there has been such a delay from condition submission till now these works are already well underway and nearing completion, so being overseen by an arboriculturist is now not possible.

Within section 6 of this document explains how the works have been undertaken up till this point.

MAPLE & POPLAR TREE PROTECTION MS

4. Tree Protection Plan

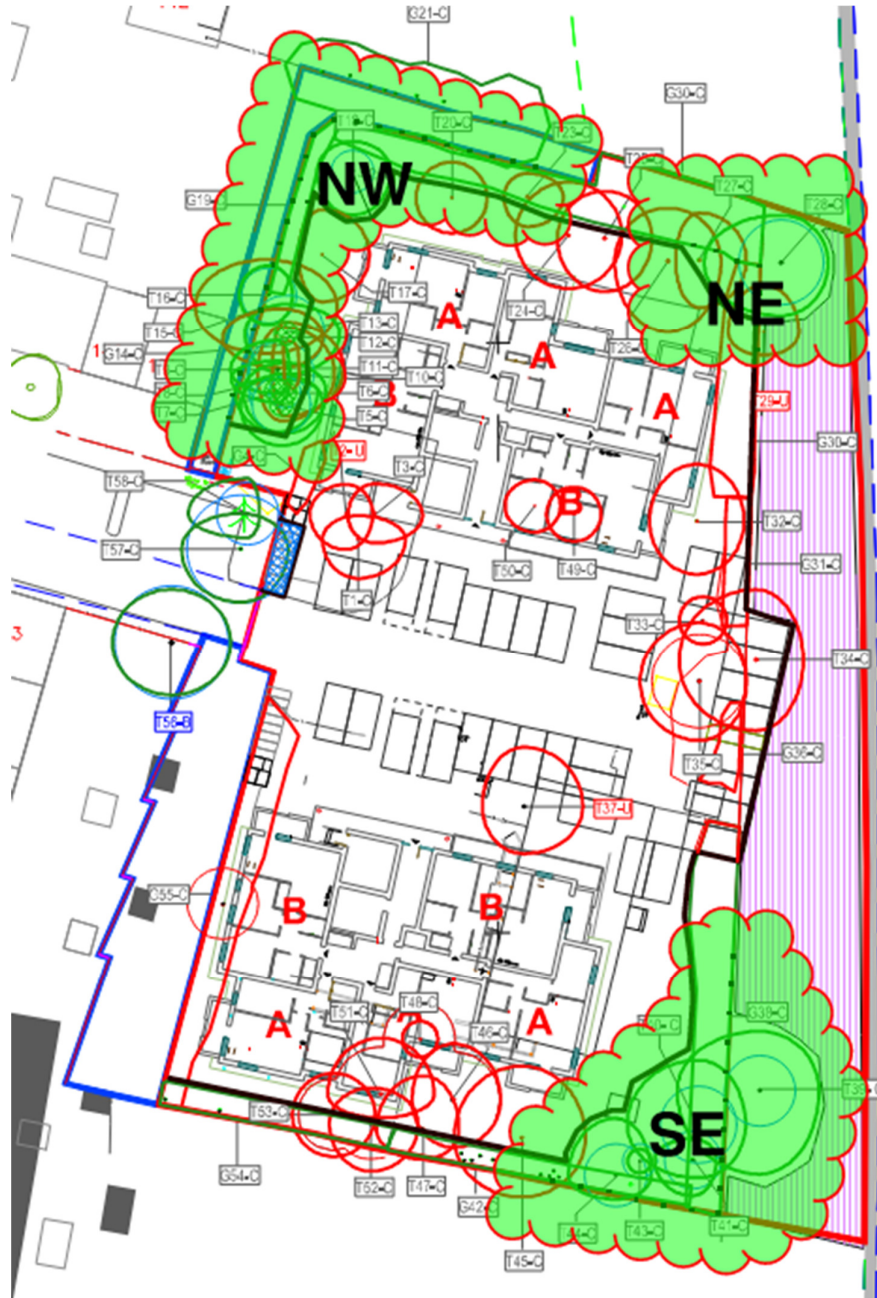
As set out in the Southern Ecological Solutions (SES) Arbicultural report dated January 2018 areas of protected / trees to remain have been set out. **Appendix B**



MAPLE & POPLAR TREE PROTECTION MS

5. Fencing Positions

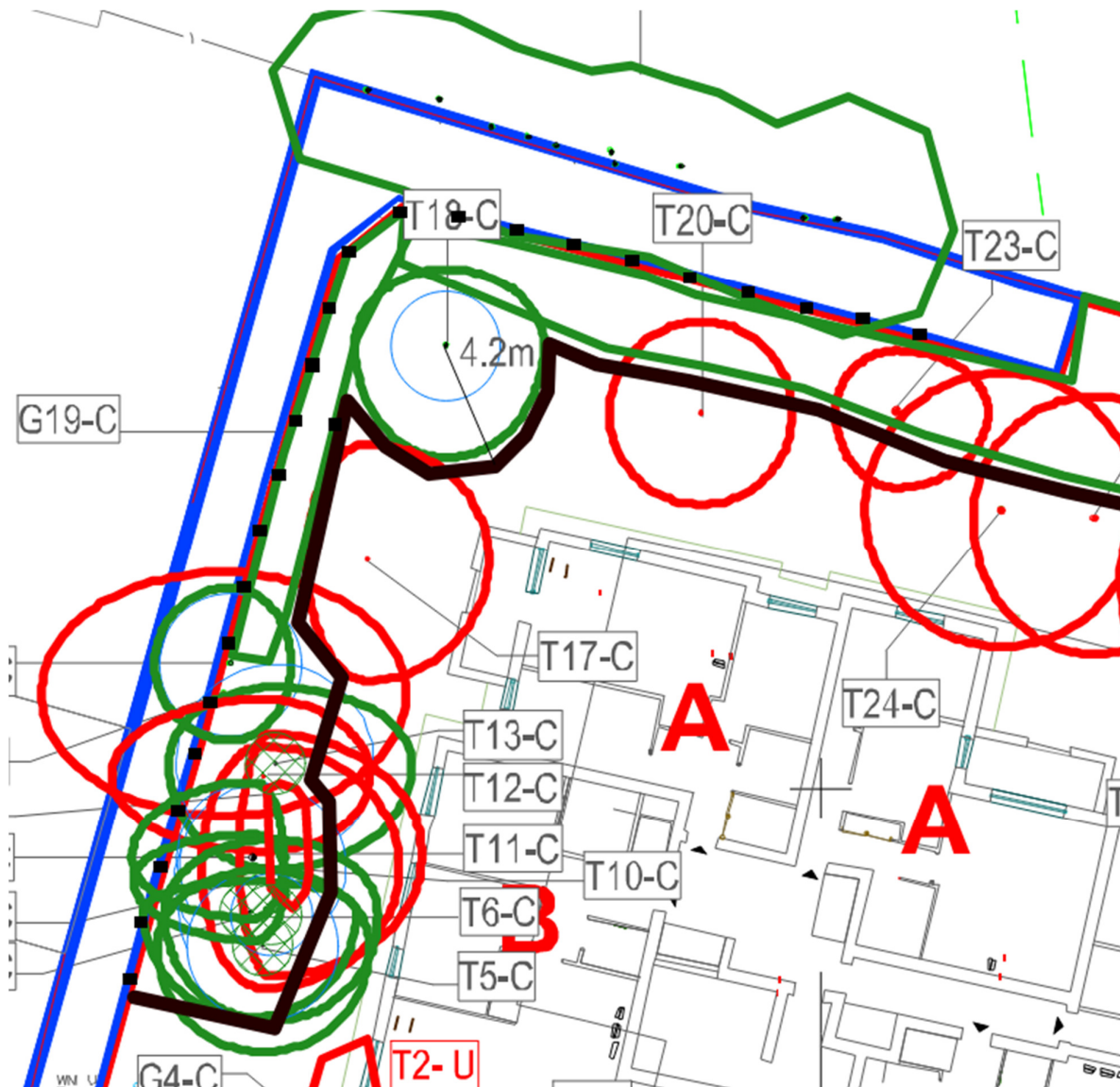
There are 3 main areas where the new fencing encroaches into the retained tree route protection zones, as highlighted on the site wide drawing below, but then blown up on the following screen shots which show the actual post positions on site.



MAPLE & POPLAR TREE PROTECTION MS

North West corner

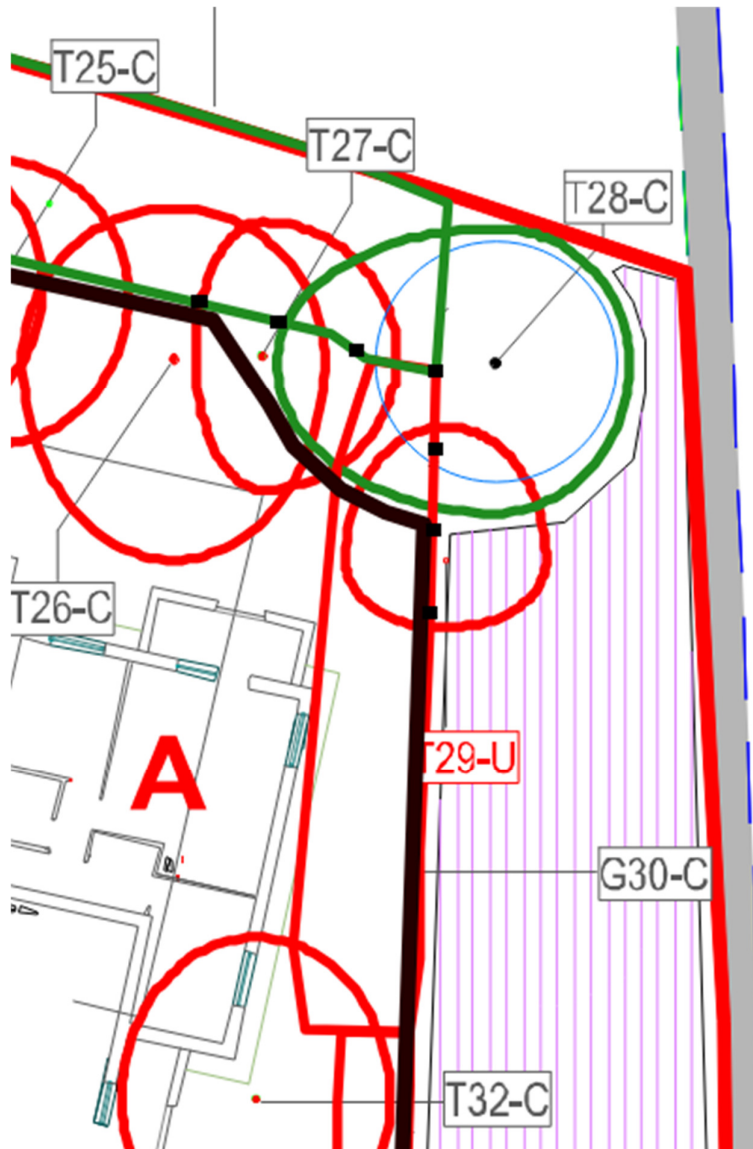
This corner consists of 2100mm high close boarded panels at 1900mm post centres. These are indicated by black dots on the below fencing line. There are 2 posts are within the route protection zone of tree T13-C.



MAPLE & POPLAR TREE PROTECTION MS

North East corner

This corner consists of 2500mm high acoustic fence at 2400mm post centres. These are indicated by black dots on the below fencing line. Only the corner post and the one South of it are within the route protection zone of tree T28-C.



MAPLE & POPLAR TREE PROTECTION MS

South East corner

This corner consists of 2500mm high acoustic fence at 2400mm post centres. These are indicated by black dots on the below fencing line. Within this area the following posts are within root protection zones:

- T39-C = 1 post
- T40-C = 2 posts
- T44-C = 1 post



6. Installation Method Statement

All posts holes were dug by hand by our specialist fencing contractor using a post hole digger to keep the holes to a minimum size of approximately 300mm diameter within which the posts were concreted.

I can confirm that during the post installation within the roof protection zones no roots were encountered.



MAPLE & POPLAR TREE PROTECTION MS

APPENDIX A

FENCING DRAWING

APPENDIX B

TREE PROTECTION ZONE DRAWING