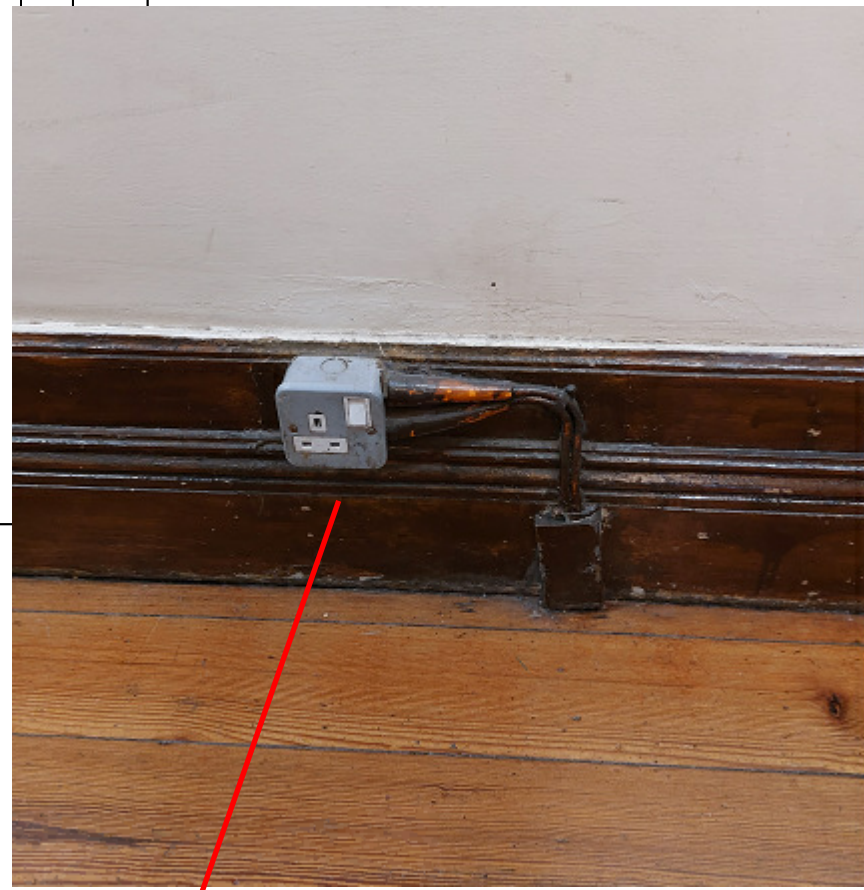
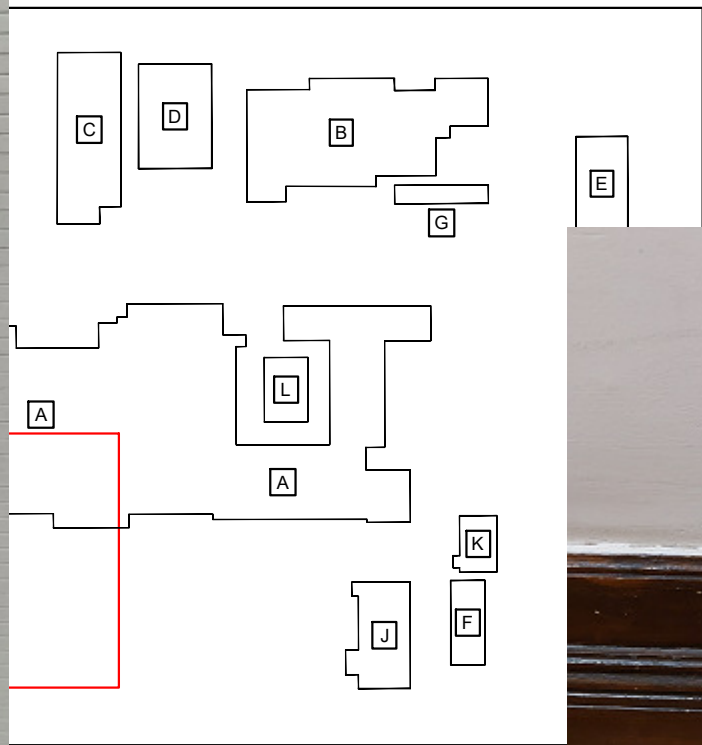
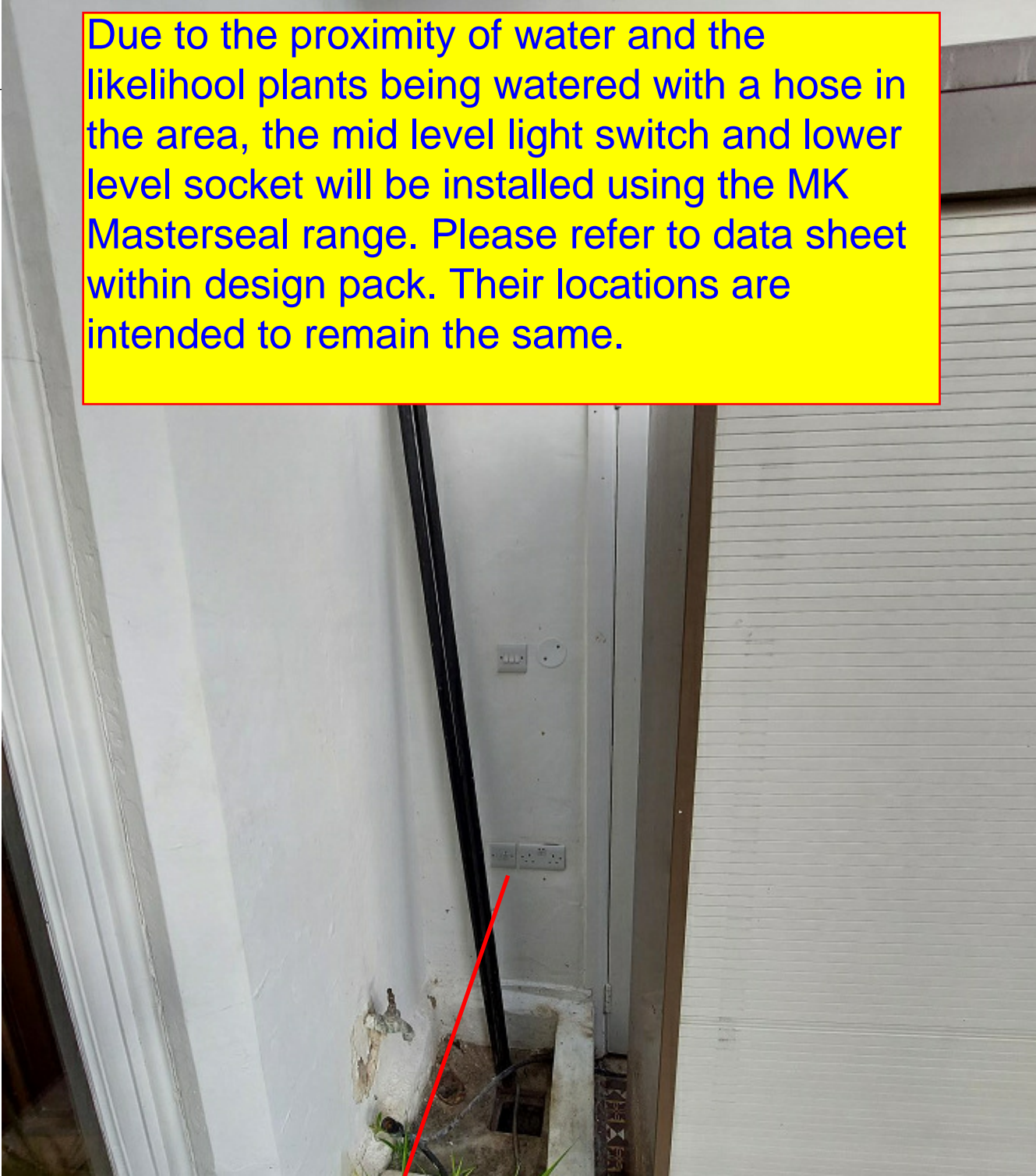
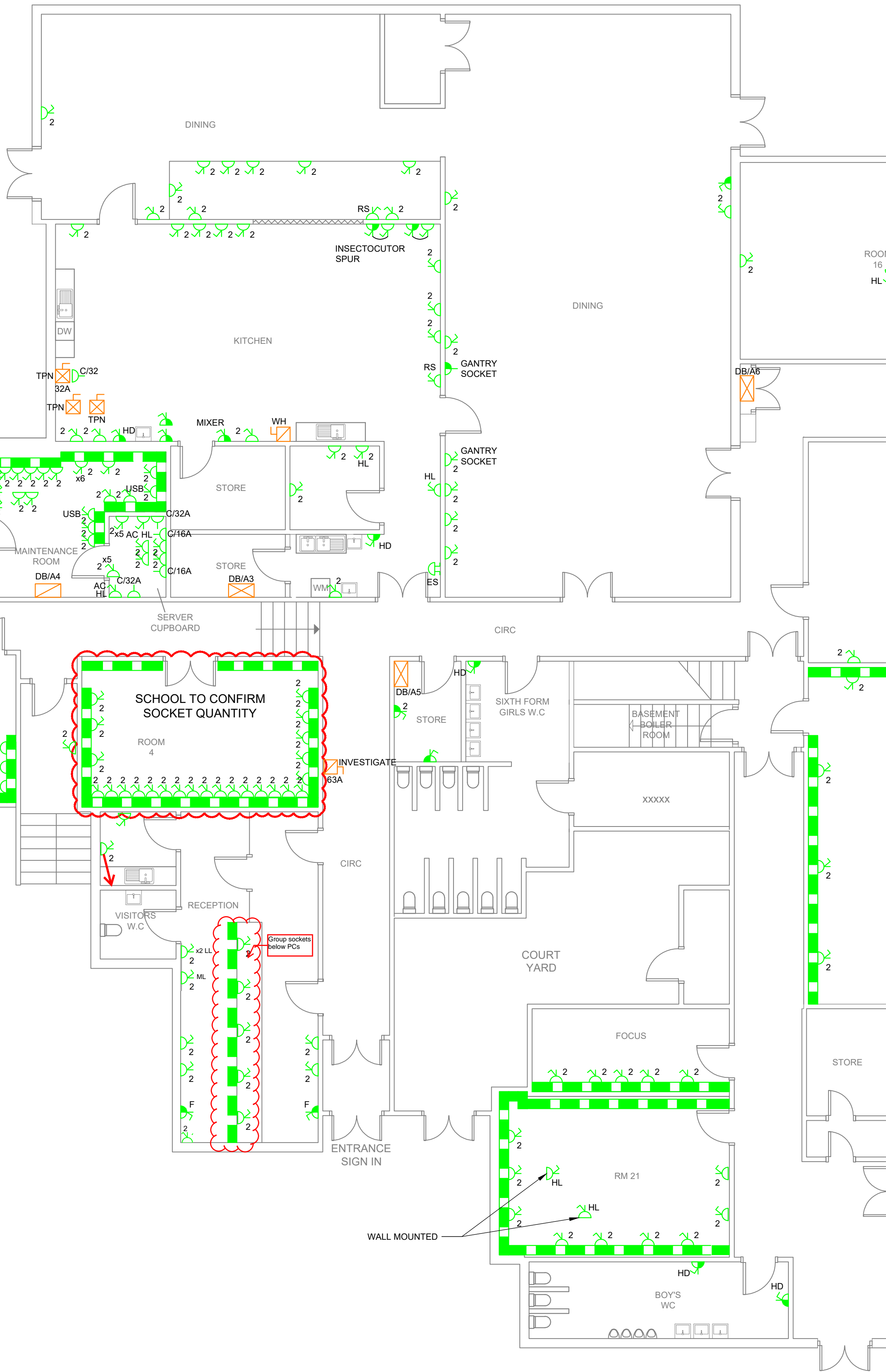
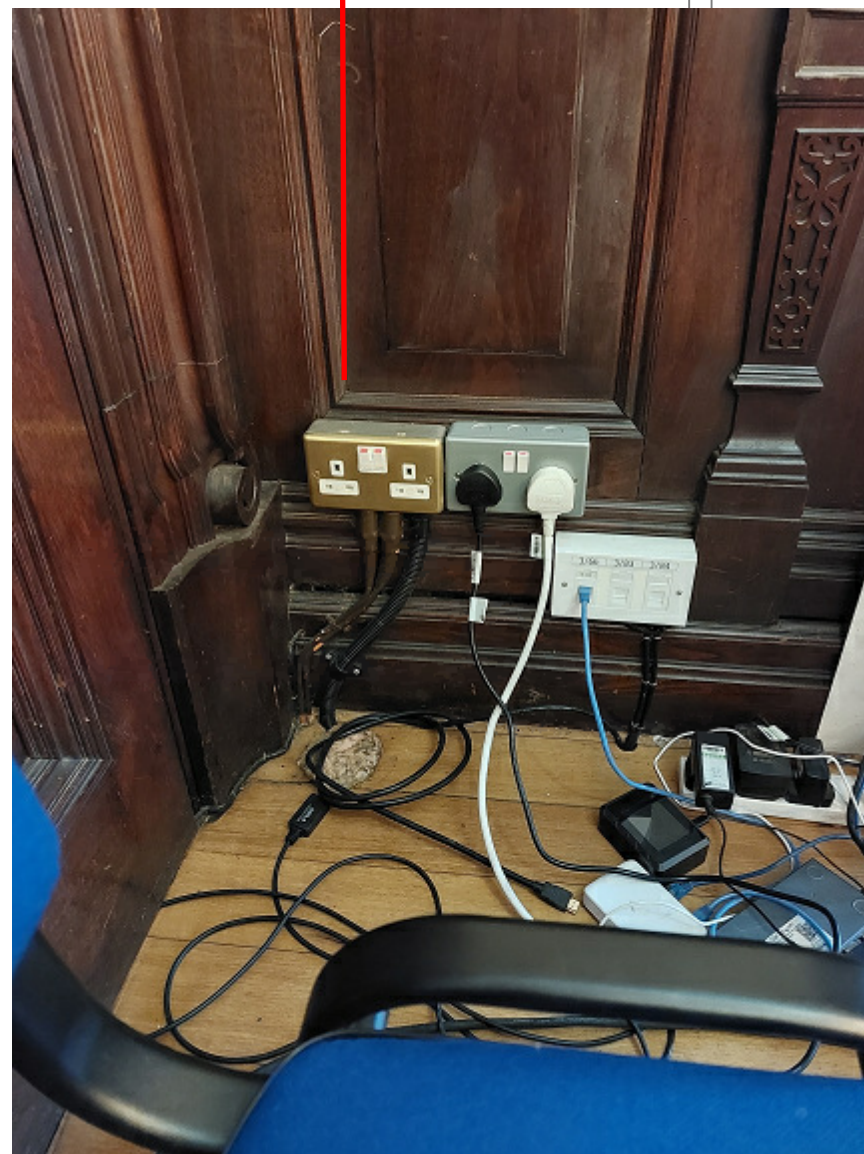
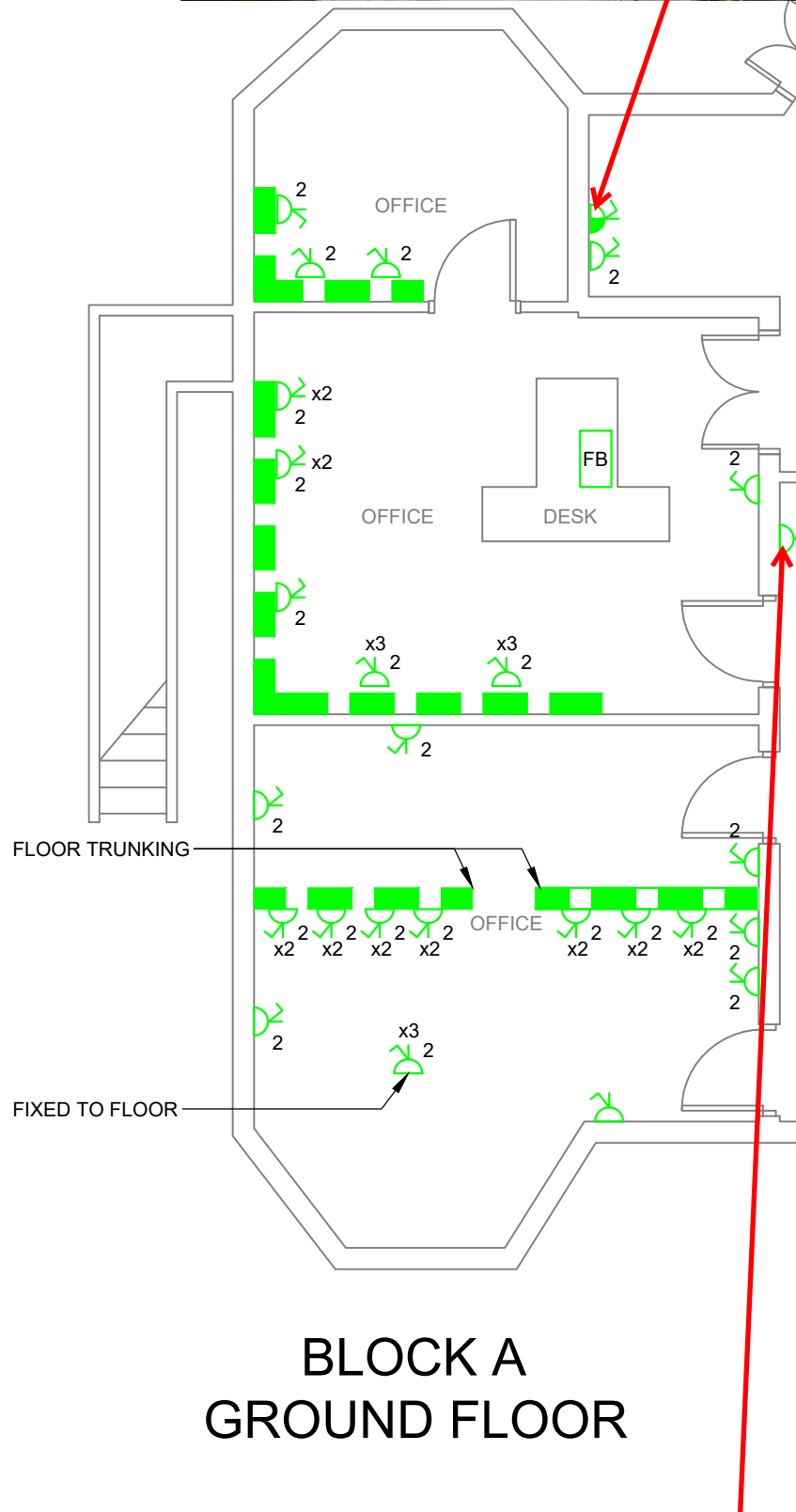


Due to the proximity of water and the likelihood plants being watered with a hose in the area, the mid level light switch and lower level socket will be installed using the MK Masterseal range. Please refer to data sheet within design pack. Their locations are intended to remain the same.



As per example images, we can see the installation of low level power originates from below the void space below. As per the statement in the email accompanying this drawing, identifying how to wire each socket will be case by case during the work as until destructive (removal of floor boards, lifting of floor finishes) is started the exact routes of all cables is impossible to confirm.

As per the existing cable installation, sections of new cabling will be secured to the surface of the wall (e.g. skirting boards or directly to the wall)



All dimensions to be checked & verified before commencing work on site. Any discrepancies are to be reported in writing to Carter Services Group Ltd. The copyright of this drawing remains with Carter Services Group Ltd and may not be reproduced in any form without prior written consent.

- ELECTRICAL POWER LEGEND**
- DB MCB PANEL BOARD
 - TPN DISTRIBUTION BOARD
 - SPN DISTRIBUTION BOARD
 - DOUBLE SWITCHED SOCKET OUTLET
 - SINGLE UNSWITCHED SOCKET
 - COMMANDO SOCKET
 - SWITCHED FUSED CONNECTION UNIT
 - UNSWITCHED FUSED CONNECTION UNIT
 - SINGLE DATA POINT
 - ES EMERGENCY STOP BUTTON
 - DATA CABINET
 - DADO TRUNKING
 - ISOLATOR
 - TPN ISOLATOR
- WORKTOP MODULE 1 CONTAINING:**
- 2 No. 45A COOKER ISOLATORS
 - 1 No. DSSO
- WORKTOP MODULE 2 CONTAINING:**
- 3 No. DSSO
- WORKTOP MODULE 3 CONTAINING:**
- 2 No. SWITCHED 13A FUSED CONNECTION UNIT
 - 1 No. DSSO
- ABBREVIATIONS**
- HD HAND DRYER
 - WH WATER HEATER
 - F EXTRACT FAN
 - CL CLEANERS SOCKET
 - HL HIGH LEVEL
 - IAP INTRUDER ALARM PANEL
 - FAP FIRE ALARM PANEL
 - BLR BOILER
 - FC FUME CUPBOARD
 - DC DATA CABINET
 - RS ROLLER SHUTTER
 - DA DISABLED ALARM
 - SH SERVICE HEAD
 - CT CURRENT TRANSFORMER
 - M METERING
 - BC BUSBAR CHAMBER

C2	ISSUED FOR CONSTRUCTION	SW	RL	06.05.23
C1	ISSUED FOR CONSTRUCTION	SW	RL	02.05.23
V0	ISSUED FOR APPROVAL	SW	RL	22.04.23
Rev	Description	Drm	Chk'd	Date

Drawing Current Status

FOR CONSTRUCTION



Project/Site:

BISHOPSHALT SCHOOL

Drawing Title:

GROUND FLOOR BLOCKS A & L

SMALL POWER LAYOUT

DRAWING 1 OF 3

Drawing No:	1555-BSS-00-PWR-001	Scaled to:	1:100@A1	Revision:	C2
-------------	---------------------	------------	----------	-----------	----