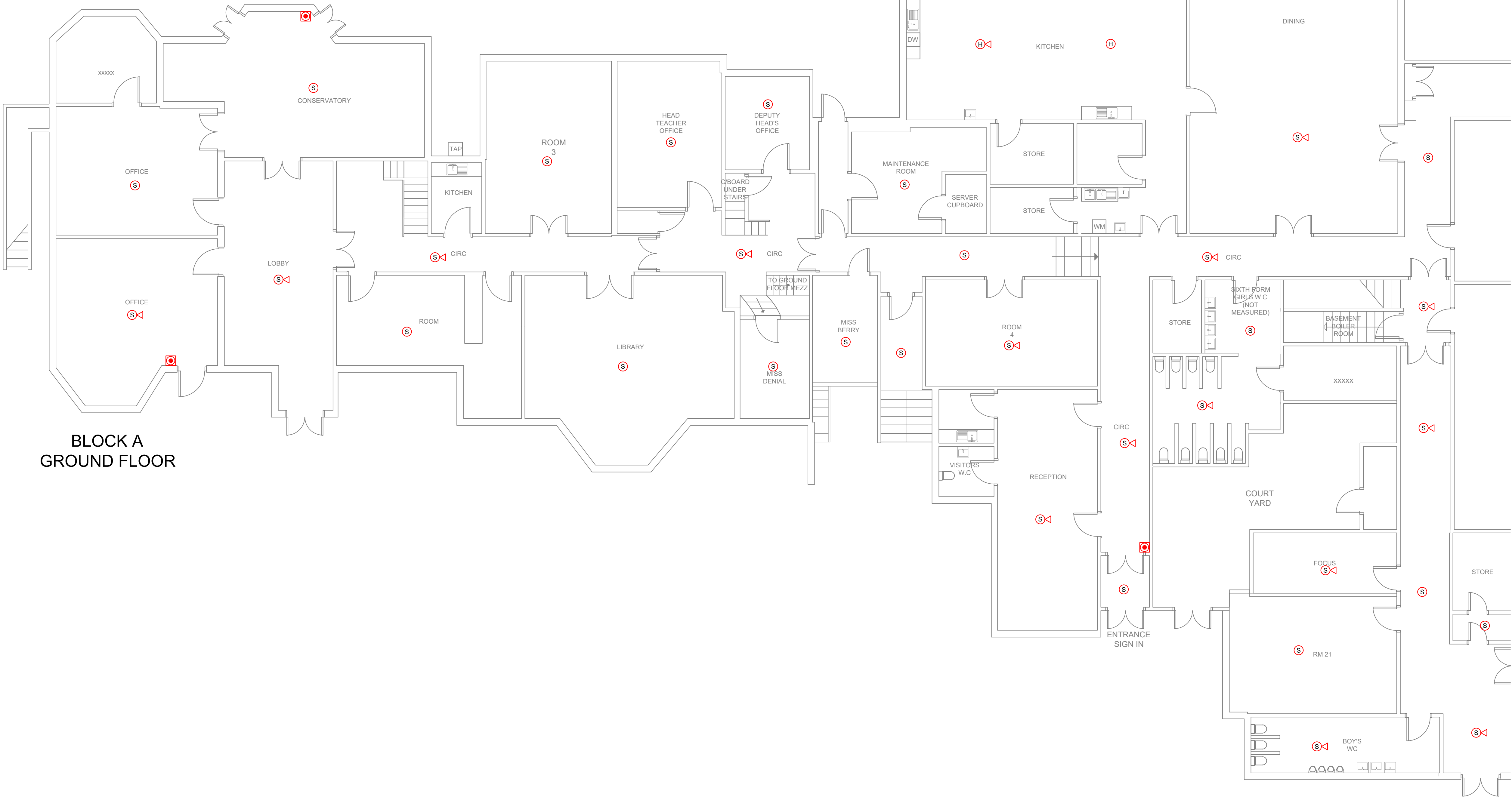


GROUND FLOOR
SITE PLAN (NTS)



BLOCK A
GROUND FLOOR

DMP File No.
E:\CAD\DMP\DWGS\

- NOTES:**
- THIS DRAWING SHOWS AN INDICATIVE FIRE ALARM LAYOUT. IT IS THE RESPONSIBILITY OF THE CONTRACTOR TO ENSURE THE FINAL L2 SYSTEM IS FULLY COMPLIANT WITH BS 5839 AND ALL OTHER RELEVANT STANDARDS.
 - VOID PROTECTION AND ASSOCIATED REPEATERS SHALL BE PROVIDED BY THE CONTRACTOR FOR VOIDS GREATER THAN 800mm AND OTHER HIGH RISK AREAS.
 - THE CONTRACTOR IS TO ENSURE ALL GAS SHUT-OFF DEVICES ARE FULLY INTERFACED WITH THE FIRE ALARM SYSTEM.

- FIRE ALARM LEGEND**
- FIRE ALARM PANEL
 - FIRE ALARM INTERFACE UNIT
 - HEAT DETECTOR
 - HEAT DETECTOR WITH SOUNDER
 - SMOKE DETECTOR
 - SMOKE DETECTOR WITH SOUNDER
 - MANUAL CALL POINT C/W ALARM COVER
 - WALL SOUNDER BEACON

- ABBREVIATIONS**
- HD HAND DRYER
 - WH WATER HEATER
 - F EXTRACT FAN
 - CL CLEANERS SOCKET
 - HL HIGH LEVEL
 - IAP INTRUDER ALARM PANEL
 - FAP FIRE ALARM PANEL
 - BLR BOILER
 - FC FUME CUPBOARD
 - DC DATA CABINET

P	30.09.22	ISSUED FOR COMMENT
REV	DATE	DESCRIPTION



8 Holgate Court, Western Road,
Romford, Essex, RM1 3JS
Tel: 01708 729070 www.davidmiles.co.uk

project
BISHOPHALT SCHOOL

title
BLOCKS A & L - GROUND FLOOR
PROPOSED FIRW ALARM
LAYOUT (SHEET 1 of 3)

scale
1:100@A1

date
SEPT 2020

drawn PC	checked JS	rev P
-------------	---------------	----------

drawing no.

7722-EFA-XXX

PRELIMINARY

DO NOT SCALE FROM THIS DRAWING
This drawing is copyright and is the property of David Miles & Partners Ltd.
It is to be used between the parties and the client.
Any reproduction without the written permission of David Miles & Partners Ltd is strictly prohibited.