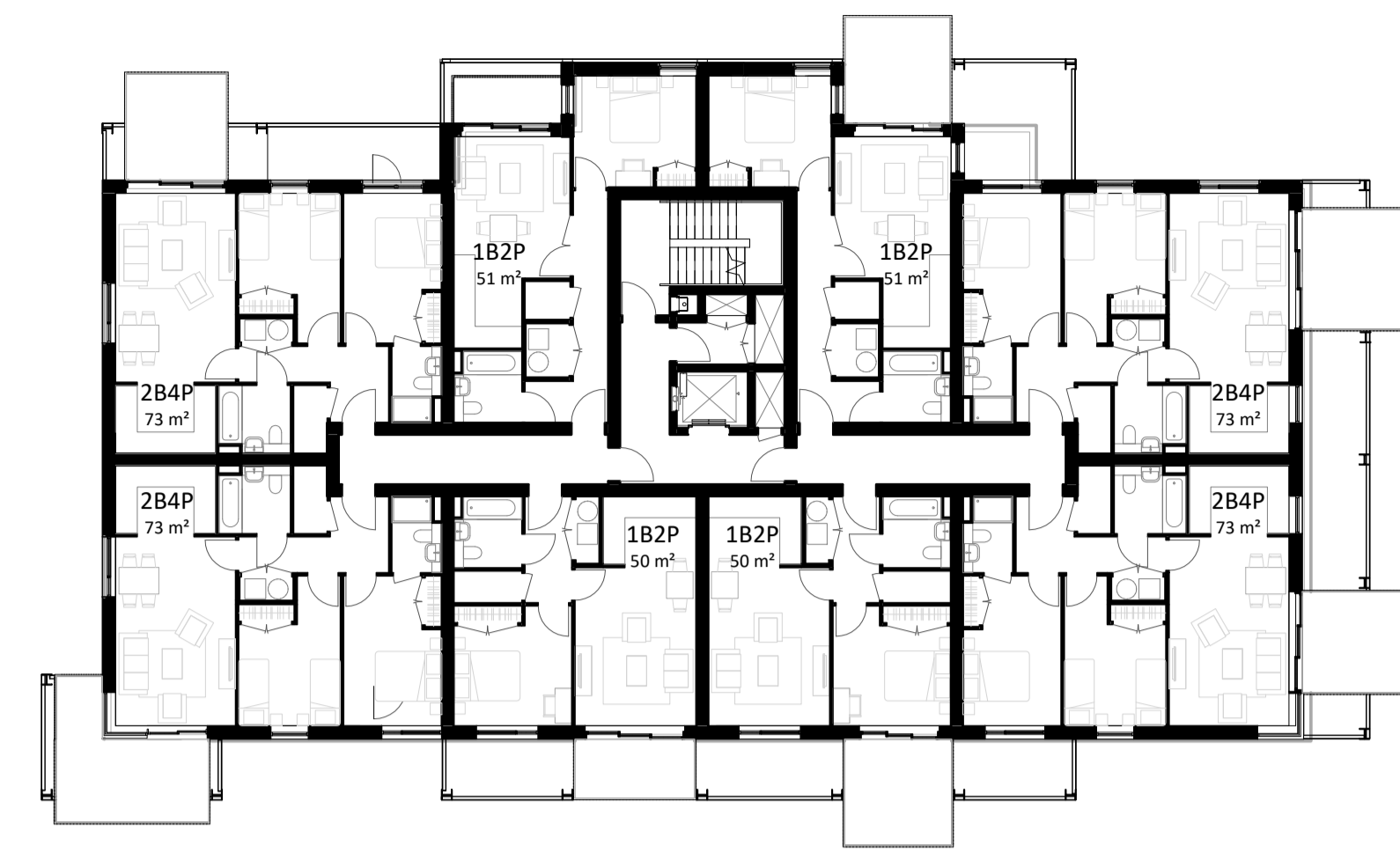
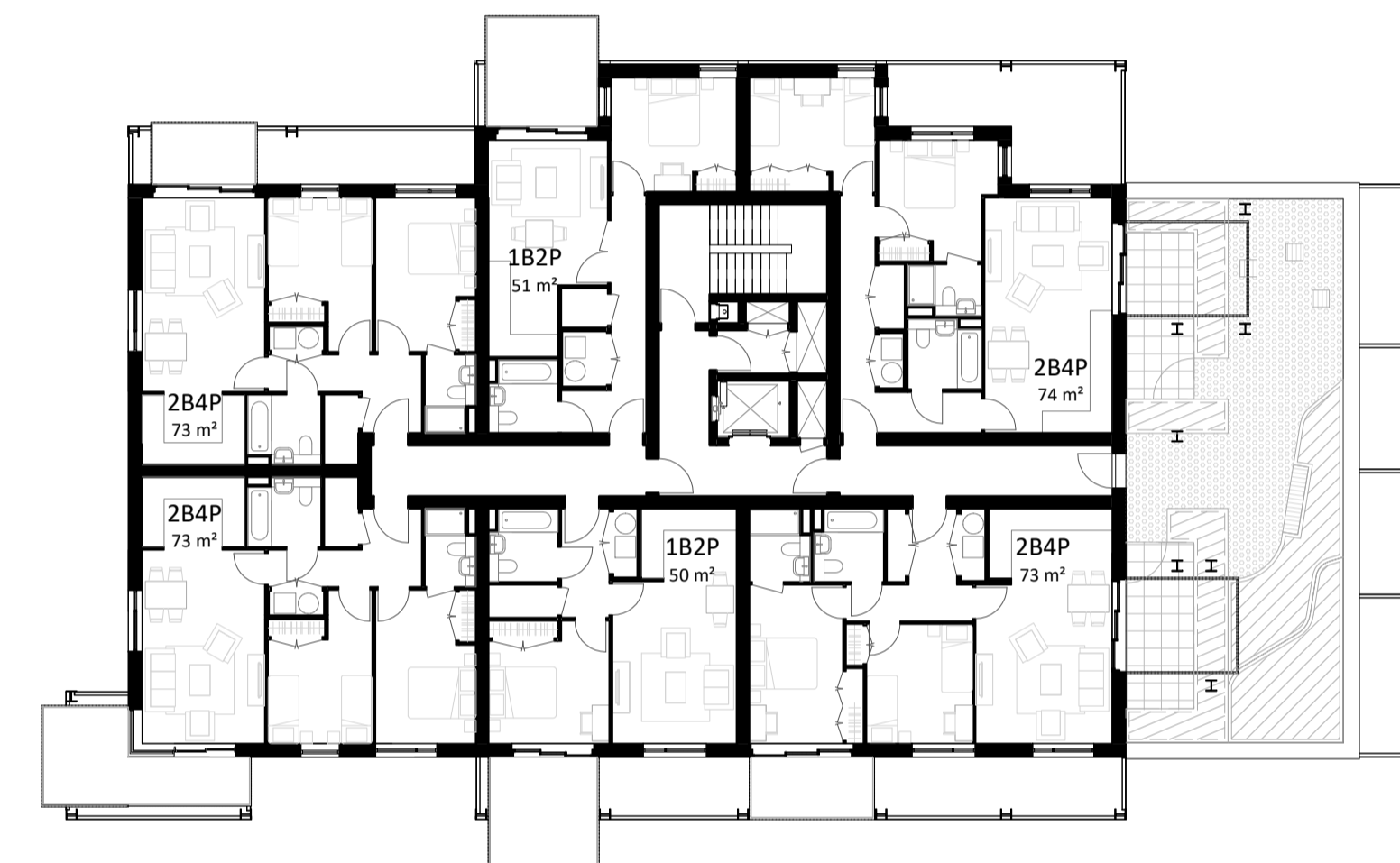




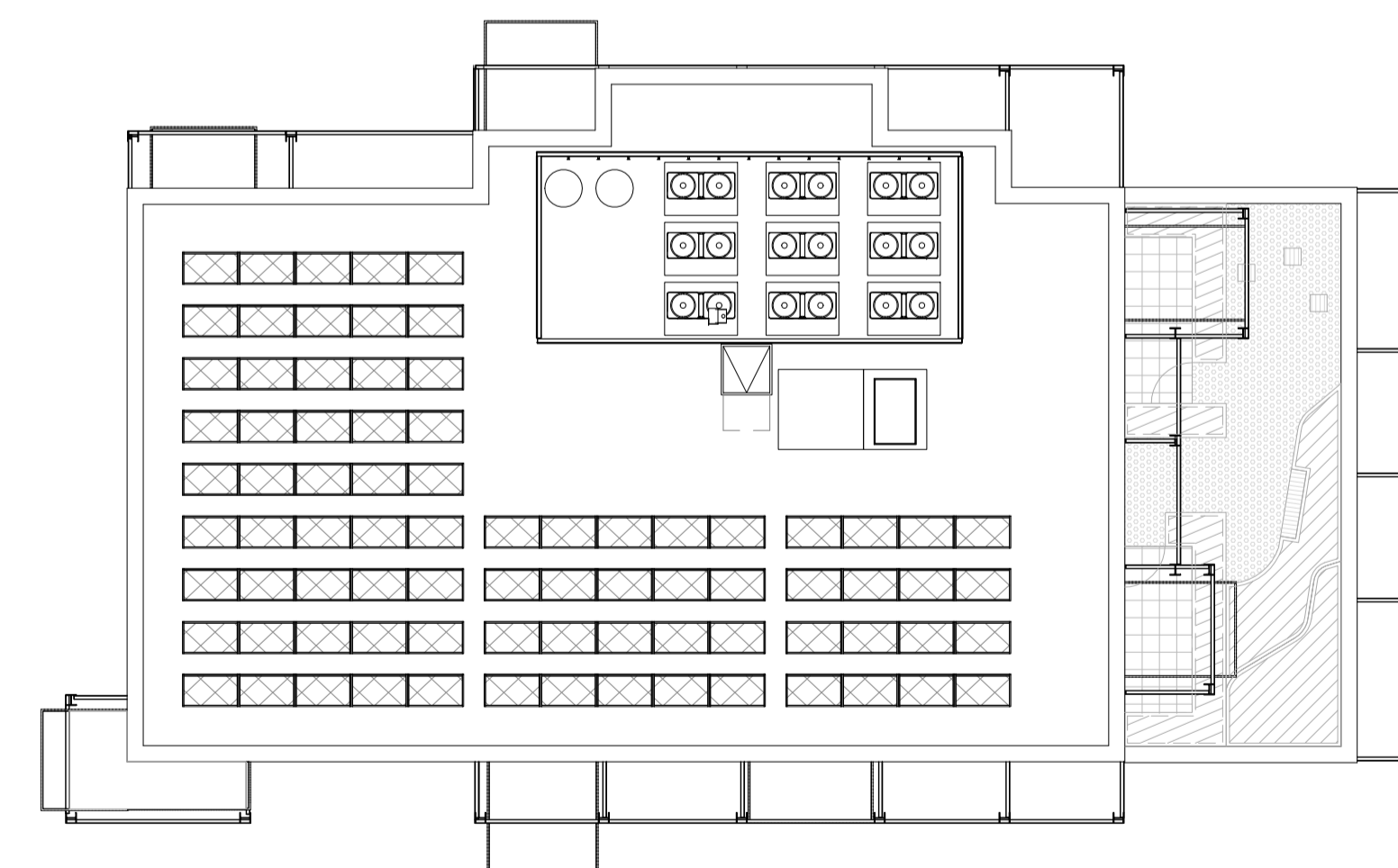
1 Building 12 - Ground Floor Plan
1 : 200



2 Building 12 - First to Third Floor Plan
1 : 200



3 Building 12 - Fourth Floor Plan
1 : 200



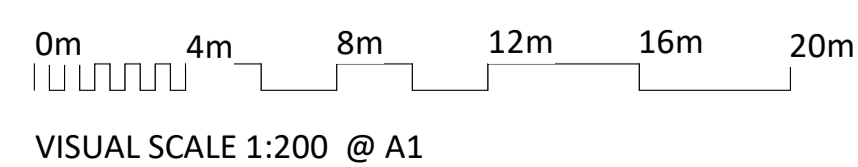
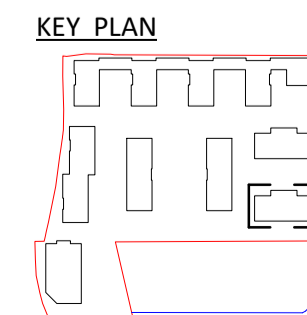
4 Building 12 - Roof Plan
1 : 200

NOTES
CONSULTANTS
- Refer to highways consultant's drawings for details
- Refer to landscape consultant's drawings for details
- Landscaping layout is indicative only

AREAS
- Refer to area schedule

© Copyright Reserved. ColladoCollins Partners LLP

Rev	Notes	Date	By	Auth
P1	DRAFT Planning Issue	30-08-19	CS	FvB
P2	Issue for Planning	19-09-05	CS	FvB
P3	Planning amendment	19-09-24	CS	FvB



ColladoCollinsArchitects

17-19 Foley Street
London W1W 6DW
T 020 7580 3490
F 020 7580 2917
info@colladocollins.com
www.colladocollins.com

Date: 09/02/19
Drawn By: CS
Checked by: JBC
Scale @ A1: As indicated
Scale @ A3: 1 : 400
CAD File No:

Inland Homes
Hillingdon
Building 12 - Floor Plans

PLANNING
19011
P1(12)-100

P3
Revision