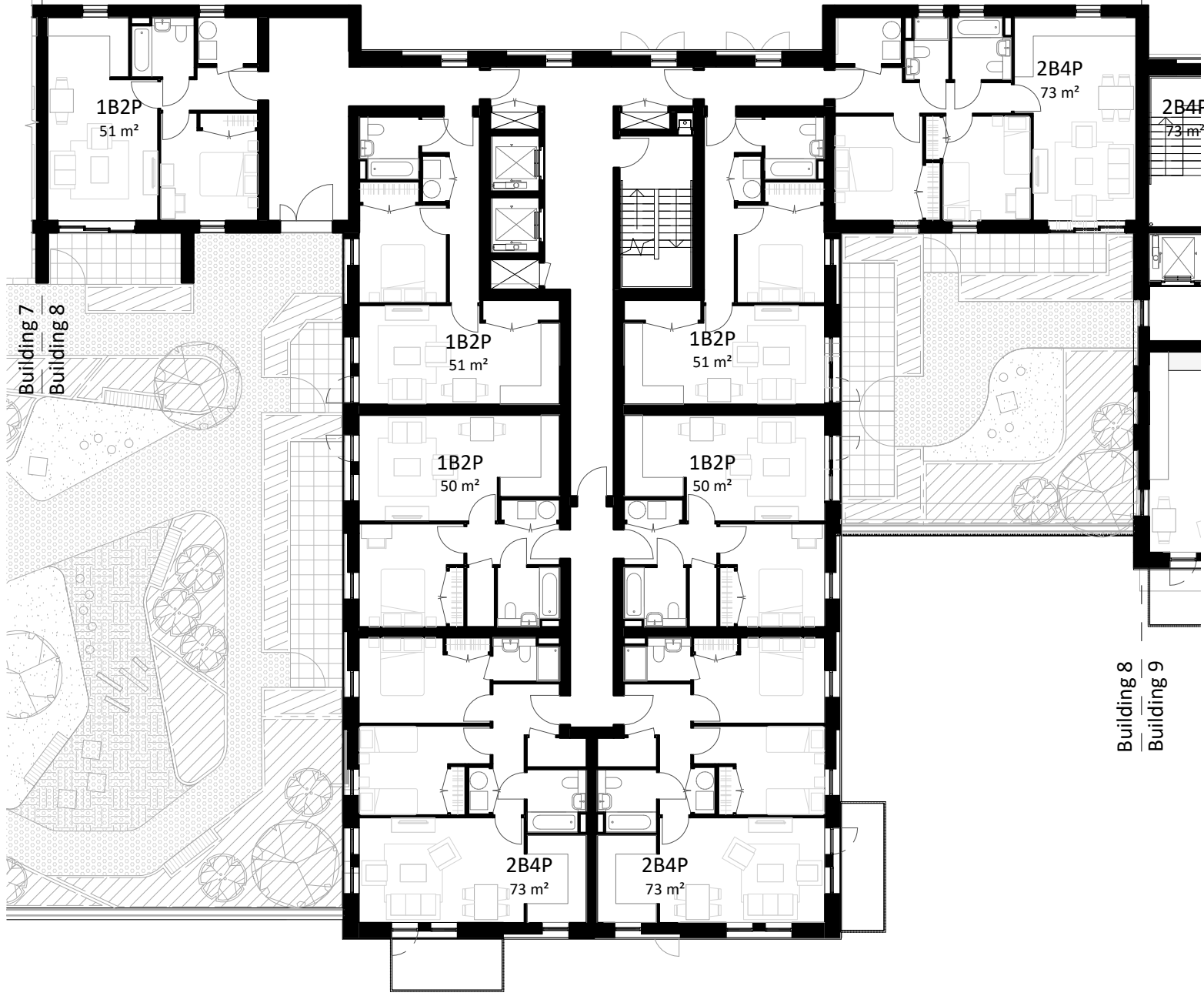
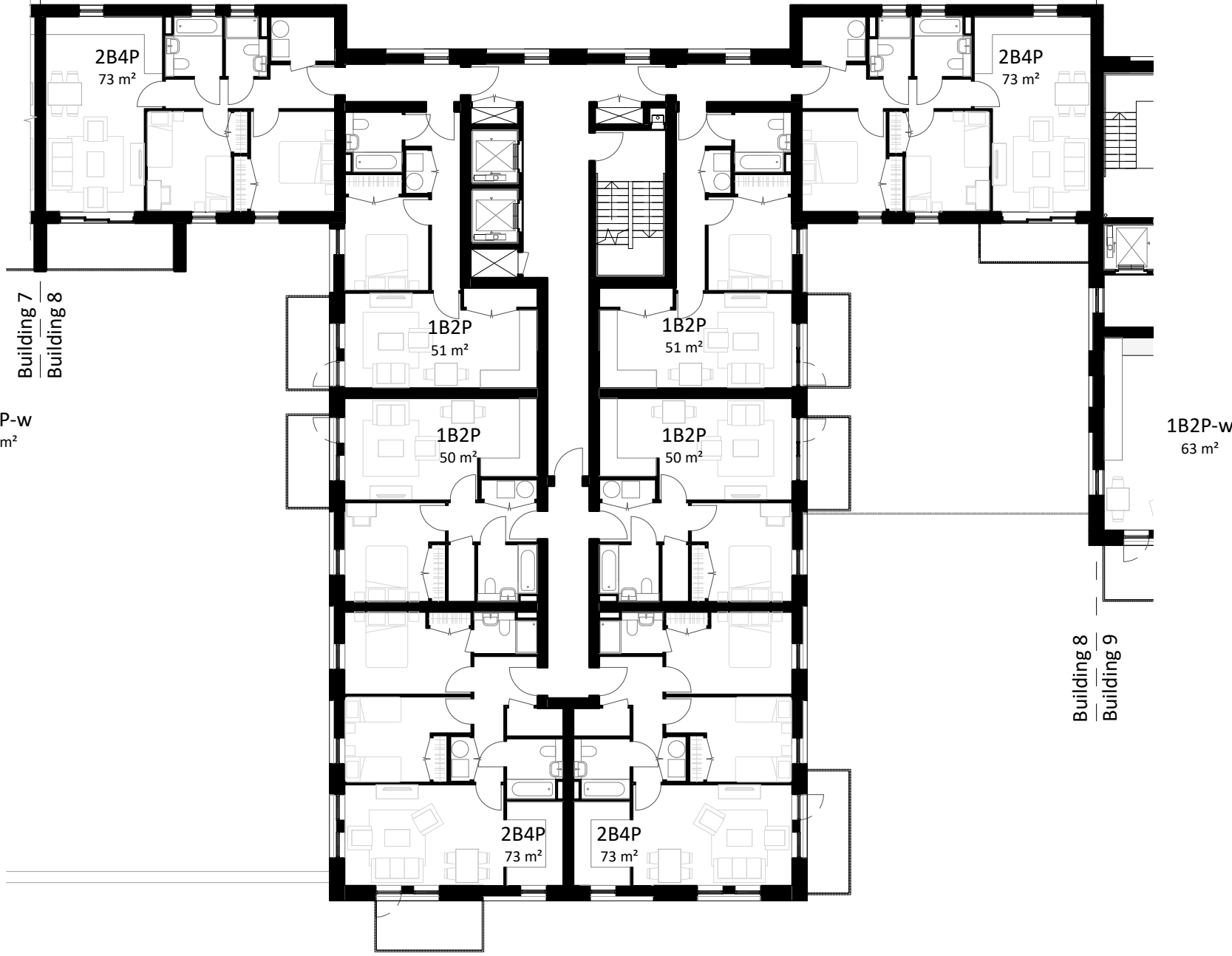


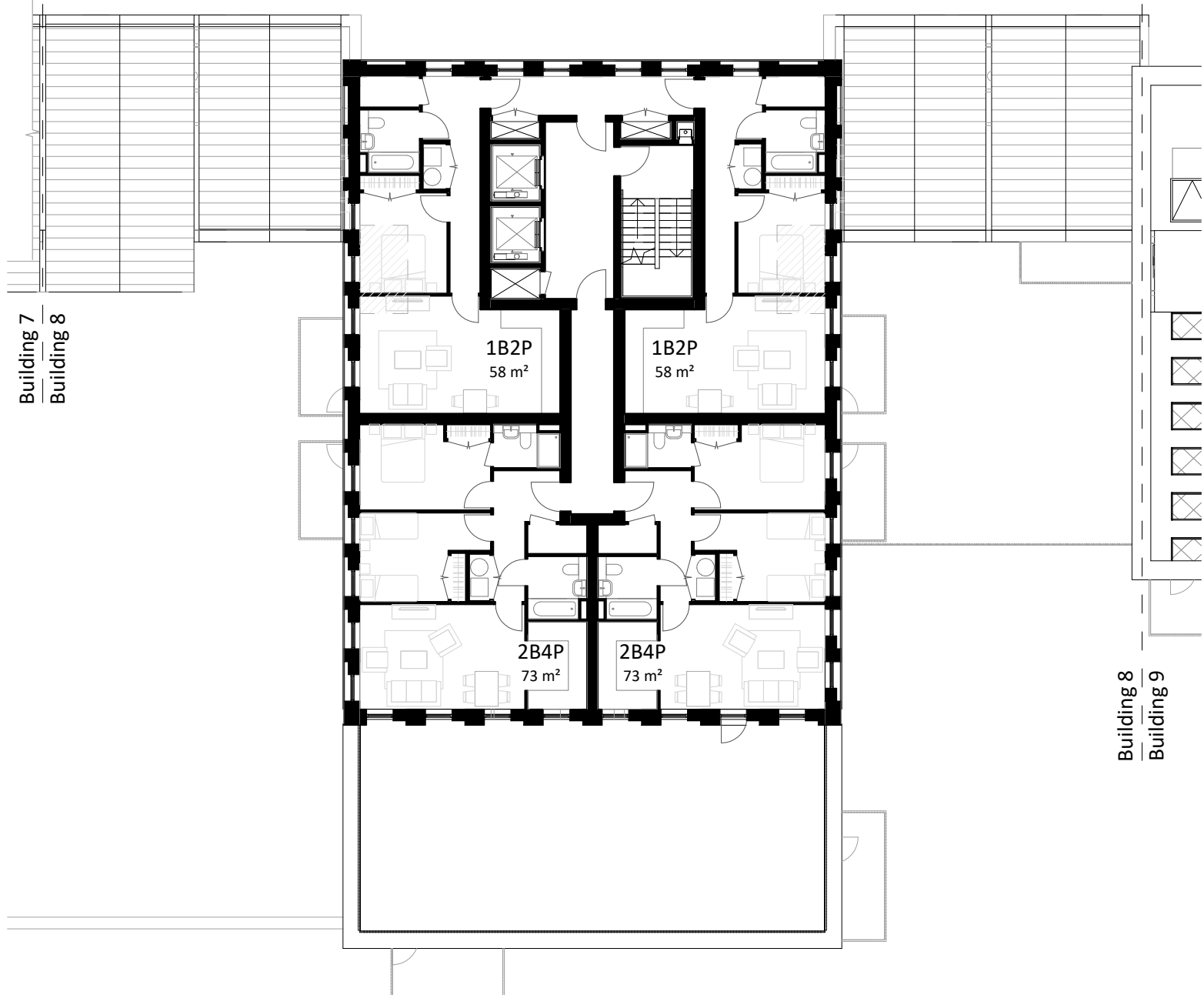
1 Building 8 - Ground Floor Plan  
1 : 200



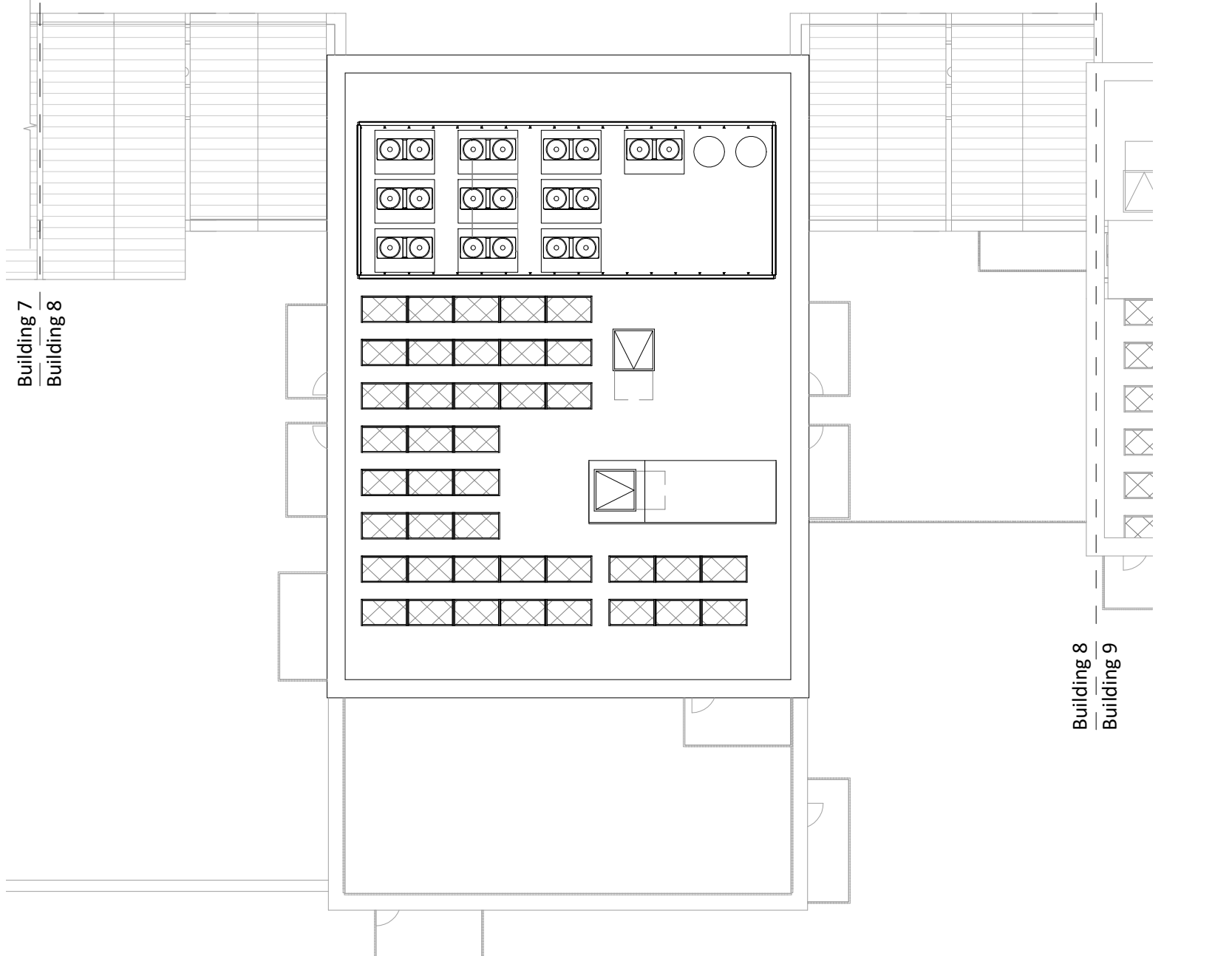
2 Building 8 - First Floor Plan  
1 : 200



3 Building 8 - Second to Fourth Floor Plan  
1 : 200



4 Building 8 - Fifth to Seventh Floor Plan  
1 : 200



5 Building 8 - Roof Plan  
1 : 200

NOTES

CONSULTANTS

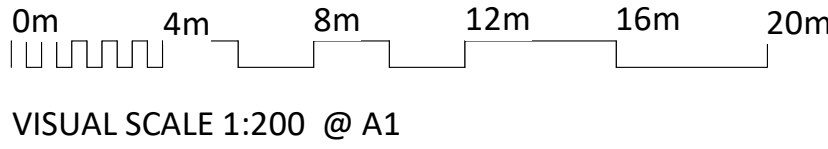
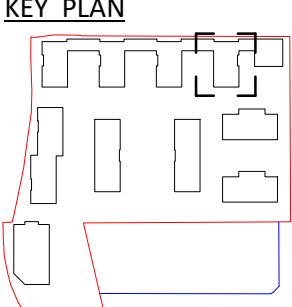
- Refer to highways consultant's drawings for details
- Refer to landscape consultant's drawings for details
- Landscaping layout is indicative only

AREAS

- Refer to area schedule

© Copyright Reserved. ColladoCollins Partners LLP

Rev	Notes	Date	By	Auth
P1	DRAFT Planning Issue	30-08-19	CS	FvB
P2	Issue for Planning	19-09-05	CS	FvB
P3	Planning amendment	19-09-24	CS	FvB



ColladoCollinsArchitects

17-19 Foley Street  
London W1W 6DW  
T 020 7580 3490  
F 020 7580 2917  
info@colladocollins.com  
www.colladocollins.com

Date: 09/02/19  
Drawn By: CS  
Checked by: JBC  
Scale @ A1: As indicated  
Scale @ A3: 1 : 400  
CAD File No:

Inland Homes  
Hillingdon  
Building 8 - Floor Plans

PLANNING  
19011

P1(08)-100

P3  
Revision