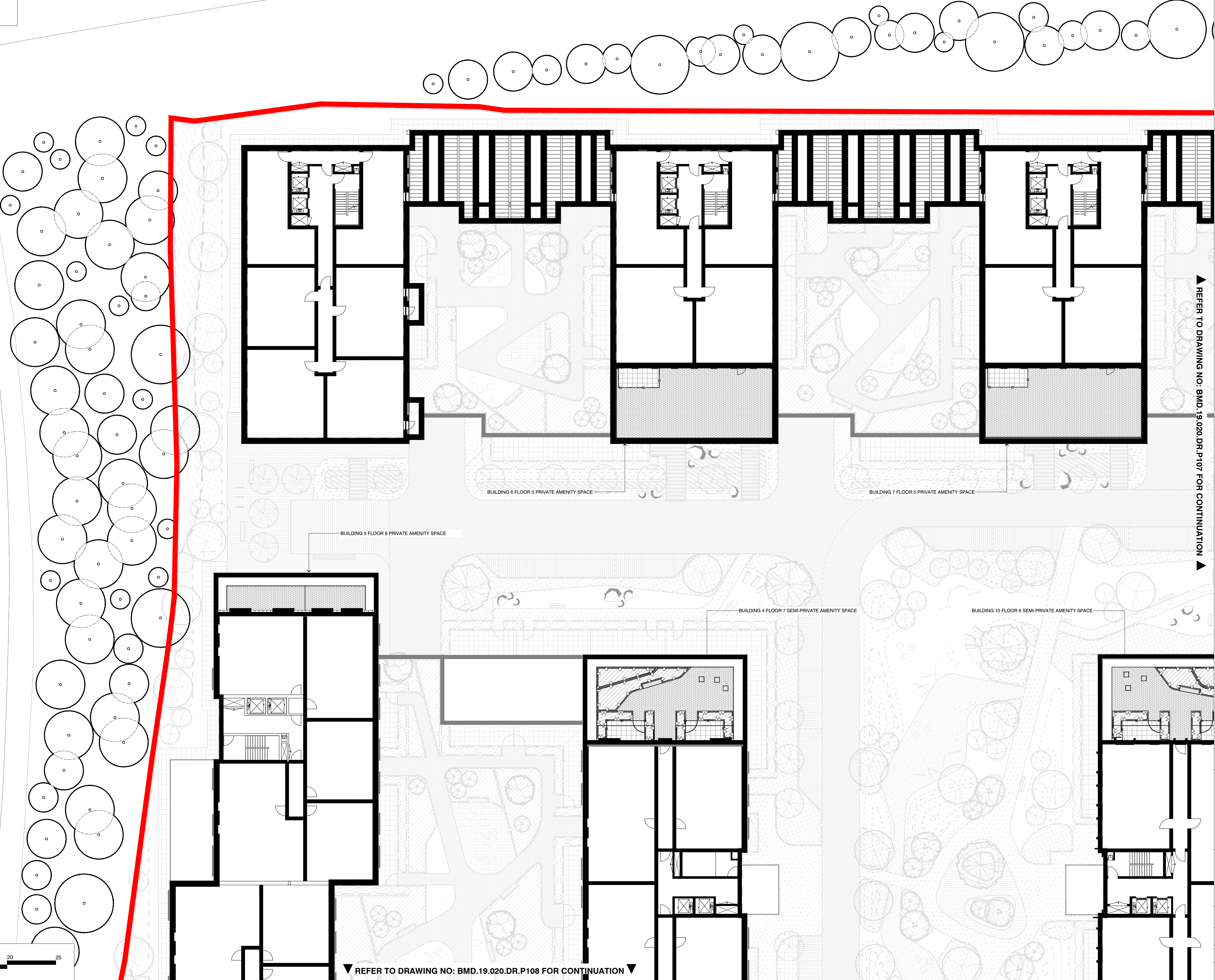


CR
Ward Bdy



This drawing is the property of Bradley Murphy Design Ltd. Copyright is reserved by them and the drawing is issued on the condition that it is not copied, reproduced, retained nor disclosed to any unauthorized person either wholly or in part without the consent of Bradley Murphy Design Ltd.

- NOTES:
1. THIS DRAWING IS BASED ON:
DEVELOPMENT ROAD / ON STREET PARKING - WSP
7005/7019-TP-SK-13-131
ARCHITECTURAL LAYOUTS - COLLADO COLLINS
P0 100 P3 / P0 101 P3 / P0 111 P3
 2. THIS DRAWING SHOULD BE READ IN CONJUNCTION WITH ALL OTHER LANDSCAPE DRAWINGS AND DOCUMENTS
 3. THIS DRAWING IS NOT INTENDED FOR CONSTRUCTION
 4. DO NOT SCALE FROM THIS DRAWING
 5. ANY DISCREPANCIES WITHIN THIS DRAWING OR BETWEEN THIS DRAWING AND ANY OTHER INFORMATION IS TO BE REPORTED TO BMD FOR CLARIFICATION

- BOUNDARIES
- EXTENT OF APPLICATION SITE
AS PER COLLADO COLLINS DRAWING 19011 P0-001
 - EXTENT OF LEASEHOLD SITE
AS PER COLLADO COLLINS DRAWING 19011 P0-001

- SOFT LANDSCAPE
- AMENITY SHRUB PLANTING
REFER TO PLANTING PLANS FOR DETAILS
 - 900MM HIGH HEDGE
REFER TO PLANTING PLANS FOR DETAILS

- HARD LANDSCAPE
- PODIUM PAVING
CONCRETE BLOCK PAVING, MIXED COLOURS - 80% SILVER GREY, 20% CHARCOAL, 100MM GAUGE, OR SIMILAR
 - FLAG PAVING
CONCRETE FLAG PAVING, BUFF / CHARCOAL, 400 X 400, OR SIMILAR

- BOUNDARY TREATMENTS
- PRIVATE AMENITY FENCE
1.1M HIGH BALUSTRADES TO MATCH BALCONIES

- STREET FURNITURE
- SEATING
(STAINLESS STEEL & HARDWOOD, OR SIMILAR)

A	Updated to latest P3 Architectural layouts	04.10.19	
Rev	Description	Date	
Purpose of Issue			
PLANNING			
Bradley Murphy Design Ltd 6 The Courtyard Hatton Technology Park Dark Lane Hatton Warwickshire CV35 8XB			
t: 01926 676496			
e: info@bradleymurphydesign.co.uk			
www.bradleymurphydesign.co.uk			
Client			
INLAND HOMES			
Project			
HILLINGDON GARDENS			
Drawing Title			
ROOF GARDENS GENERAL ARRANGEMENT (SHEET 1 OF 4)			
Drawn	Checked	Approved	Date
PW	CC	LB	13/09/2019
Job No	Scale	Sheet Size	Revision
19.020	1:200	A1	A
Drawing Number			
BMD.19.020.DR.P106			