



***EASTERLY ALTERNATION
INFRASTRUCTURE PROJECT***

***Environmental Impact Assessment
Environmental Statement, Volume III
Appendix 10.3 LVIA Figures (Part 1 of 2)***

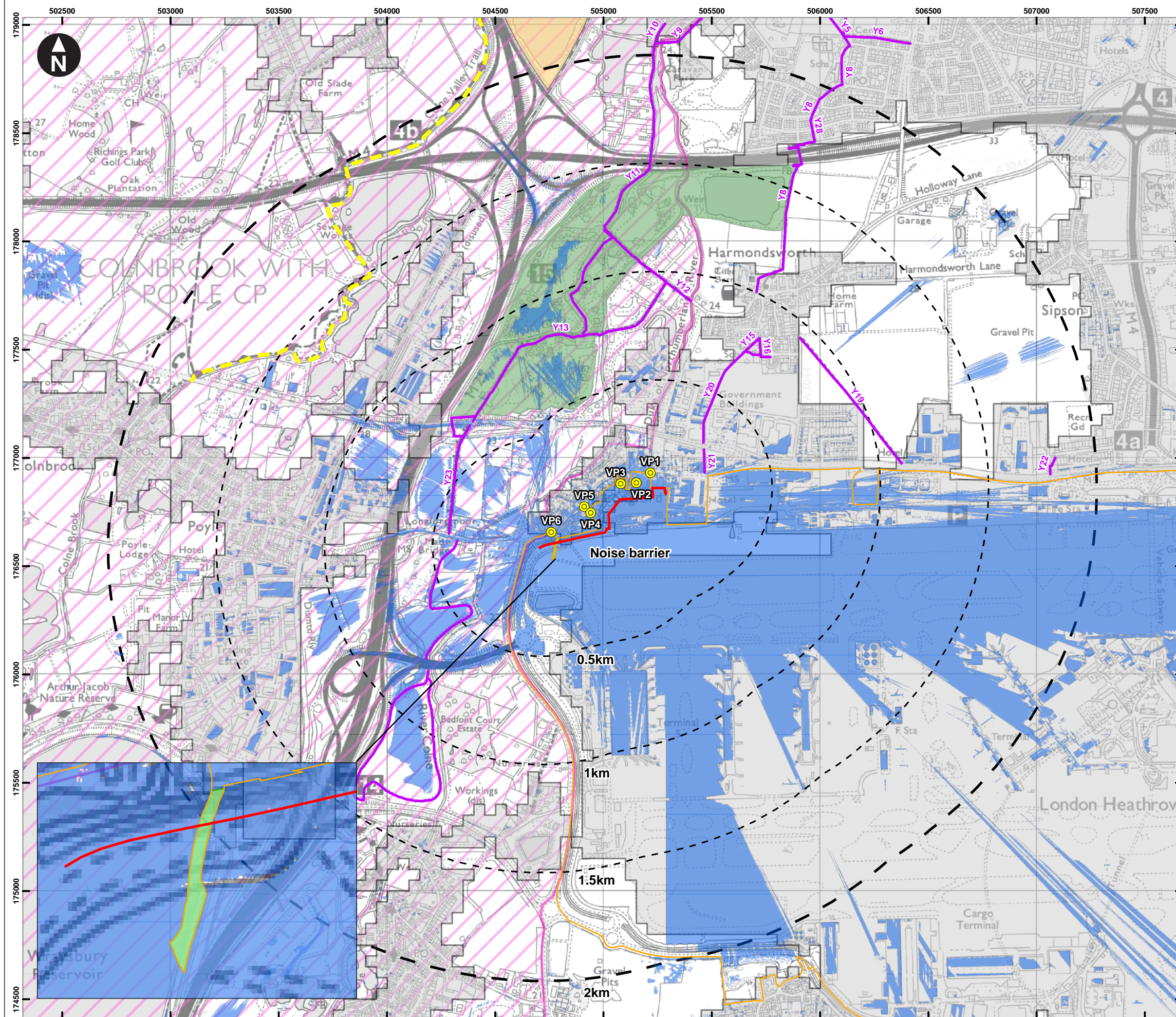
Document Reference: 19309-XX-EC-XXX-000049

October 2024

Figures

Figure 10.1a Proposed noise barrier alignment Zone of Theoretical Visibility	Part 1 of 2
Figure 10.1b Proposed noise barrier alignment Viewpoints	Part 1 of 2
Figure 10.2a Viewpoint 1 From the bridge over the Duke of Northumberland's River (Winter)	Part 1 of 2
Figure 10.2b Viewpoint 1 From the bridge over the Duke of Northumberland's River (Summer)	Part 1 of 2
Figure 10.3a Viewpoint 2 From the eastern section of Longford 'pocket park' (Winter)	Part 1 of 2
Figure 10.3b Viewpoint 2 From the eastern section of Longford 'pocket park' (Summer)	Part 1 of 2
Figure 10.4a Viewpoint 3 From the western section of Longford 'pocket park' (Winter)	Part 1 of 2
Figure 10.4b Viewpoint 3 From the western section of Longford 'pocket park' (Summer)	Part 1 of 2
Figure 10.5a Viewpoint 4 From the car park within the Padbury Oaks office complex (Winter)	Part 2 of 2
Figure 10.5b Viewpoint 4 From the car park within the Padbury Oaks office complex (Summer)	Part 2 of 2
Figure 10.6a Viewpoint 5 From Weekly House Listed Building within the Padbury Oaks office complex (Winter)	Part 2 of 2
Figure 10.6b Viewpoint 5 From Weekly House Listed Building within the Padbury Oaks office complex (Summer)	Part 2 of 2
Figure 10.7a Viewpoint 6 From King's Bridge on Bath Road (Winter)	Part 2 of 2
Figure 10.7b Viewpoint 6 From King's Bridge on Bath Road (Summer)	Part 2 of 2

C:\Users\UKTHS775\OneDrive - WSP\0365\Documents\Heathrow EAI\04_APRX\HEAL_ZTV_figure\HEAL_ZTV_figure.aprx Originator: UKTHS775



Key

- Proposed noise barrier alignment
- LVIA study area
- Heathrow ownership boundary
- Unregistered land under heathrow airport ltd control. application to register possessory title pending determination
- Colne Valley Regional Park
- Harmondsworth Moor
- Thorney Country Park
- Settlements
- Areas where the proposed noise barrier alignment is theoretically visible
- Colne Valley Trail
- Public Rights Of Way

Viewpoint

- 1 - Bath Road Bridge
- 2 - Longford Pocket Park east
- 3 - Longford Pocket Park west
- 4 - Padbury Office Complex
- 5 - Weatley House
- 6 - King's Bridge

Note. This drawing is based on a computer generated Zone of Theoretical Visibility (ZTV). The areas shown indicate the maximum theoretical visibility of the proposed noise barrier alignment using 1m Digital Surface Model (DSM) LiDAR data. The ZTV includes adjustment that allows for the curvature and light refraction of the Earth.

The drawing has been based on the following parameters:

Proposed noise barrier alignment height: 7m
Observer height: 1.5m

0 0.2 0.4 0.6 0.8 1 km

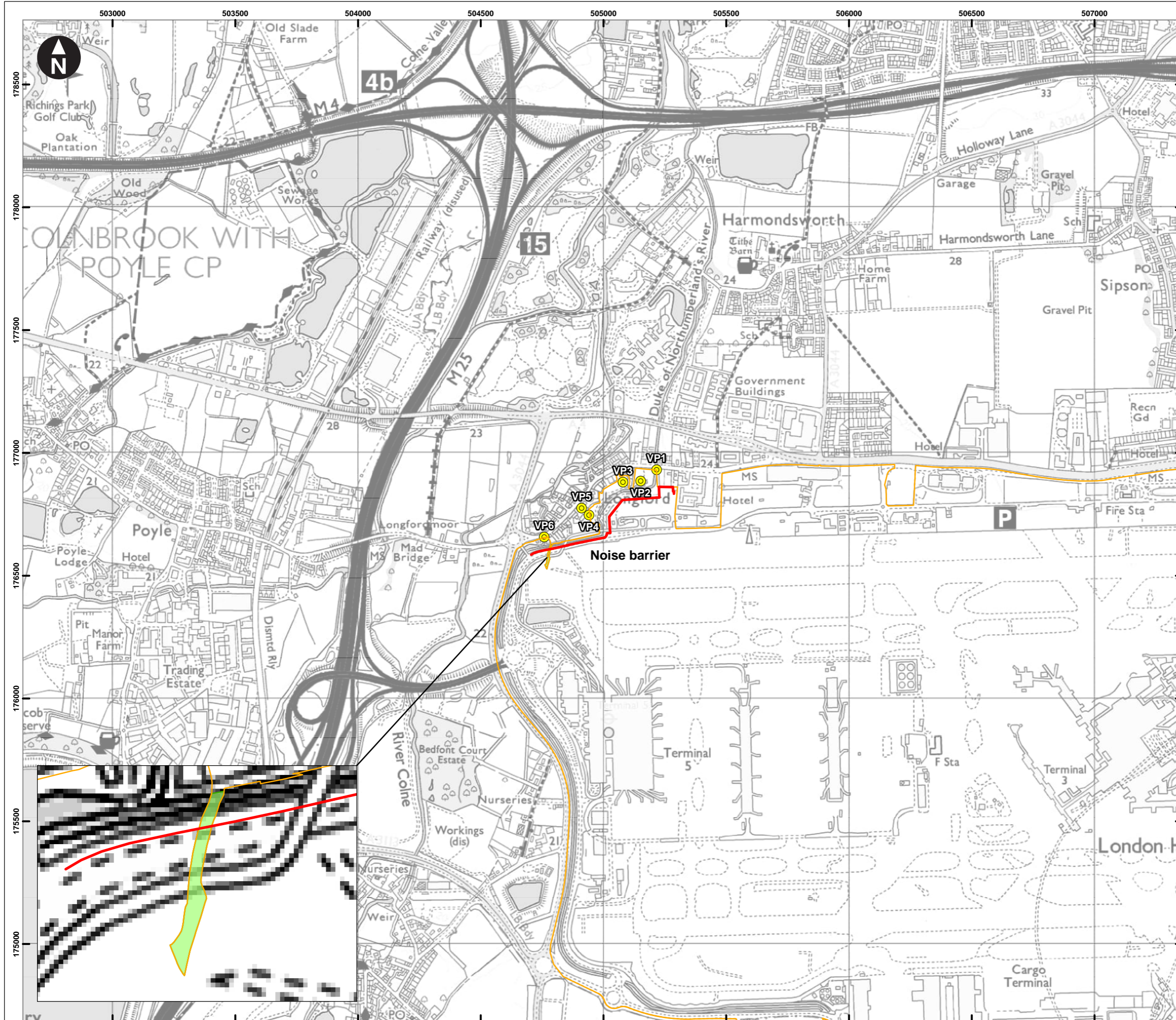
Scale at A3: 1:17,000
© Crown copyright and database rights 2024 Ordnance Survey 0100031673

Client

Heathrow

Heathrow Easterly Alternations Infrastructure
Environmental Statement

Figure 10.1a
Proposed noise barrier alignment Zone of Theoretical Visibility



- Key
- Proposed noise barrier alignment
 - Heathrow ownership boundary
 - Unregistered land under heathrow airport ltd control. application to register possessory title pending determination
 - Viewpoint
- Viewpoint
- 1 - Bath Road Bridge
 - 2 - Longford Pocket Park east
 - 3 - Longford Pocket Park west
 - 4 - Padbury Office Complex
 - 5 - Weatley House
 - 6- King's Bridge

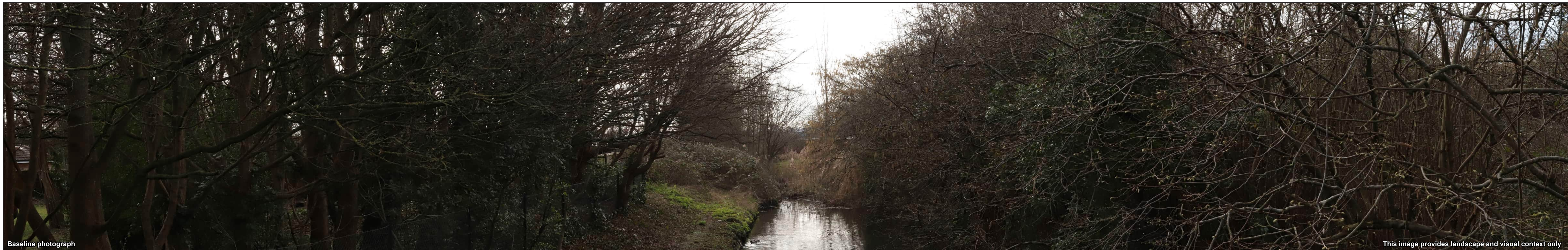
0 0.15 0.3 0.45 0.6 0.75 km
 Scale at A3: 1:15,000
 © Crown copyright and database rights 2024 Ordnance Survey 0100031673



Heathrow Easterly Alternations Infrastructure

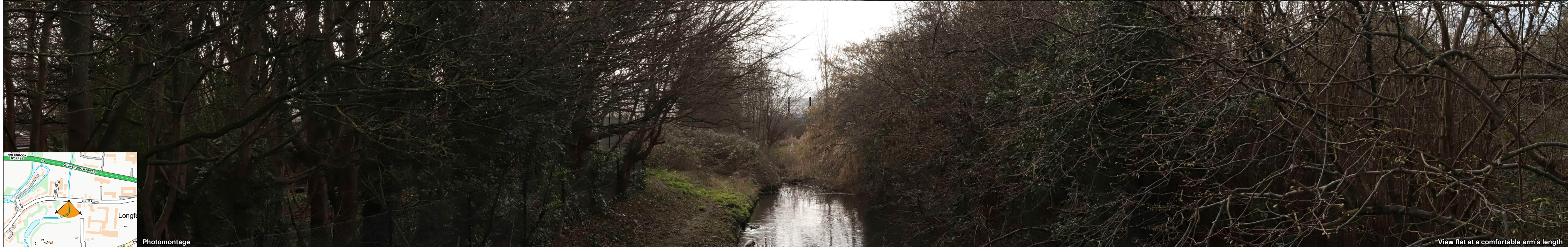
Figure 10.1b
Proposed noise barrier alignment and viewpoints





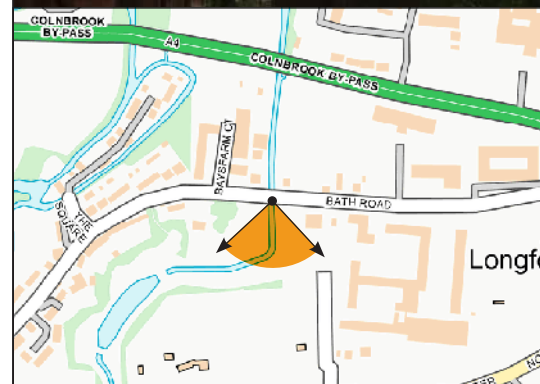
Baseline photograph

This image provides landscape and visual context only



Photomontage

View flat at a comfortable arm's length



OS reference:	E505 214, N176 936	Horizontal field of view:	90° (cylindrical projection)	Camera:	Canon EOS6D
Eye level:	25.5m AOD	Principal distance:	522mm	Lens:	50mm (Canon EF 50mm f/1.8)
Direction of view:	182°	Paper size:	841mm x 297mm (half A1)	Camera height:	1.5m AGL
Distance to barrier:	74m	Correct printed image size:	820 x 130mm	Date:	16/03/2023



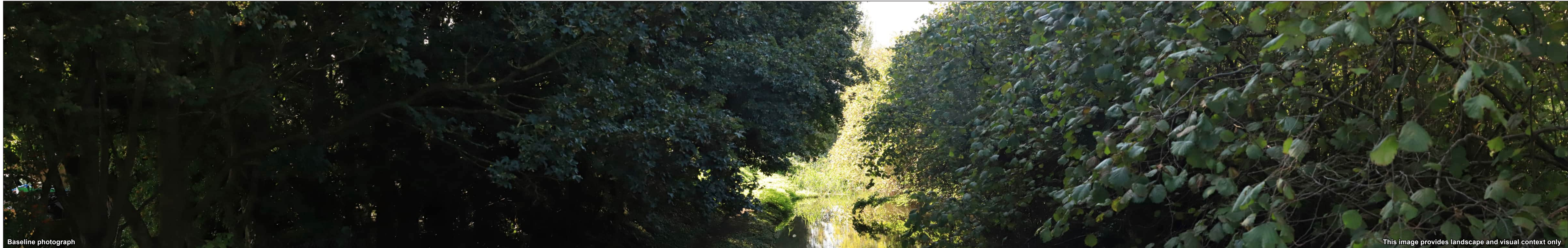
Client
London Heathrow Airport
Proposed Noise Barrier

Figure 10.2a
Viewpoint 1: From the bridge over the Duke of Northumberland's River (Winter)

March 2024

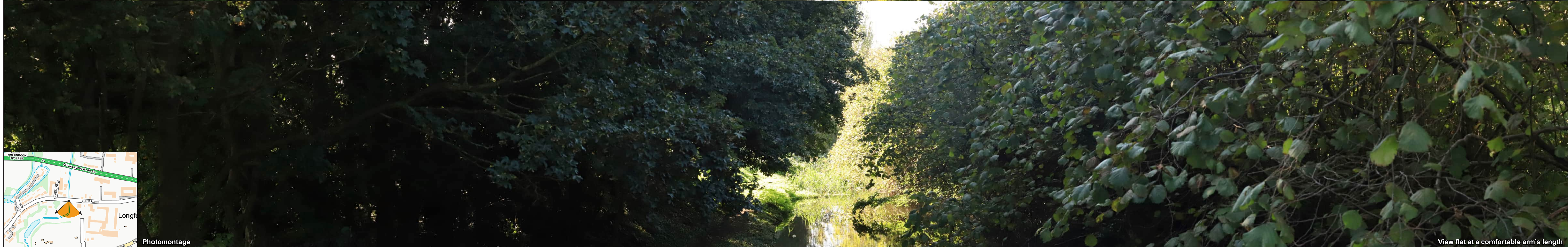


C:\Users\UKCL75\OneDrive - WSP\OneDrive - WSP\03651Temp\Windfarm\LHR_BARRIERS\Design\viewpoint_1.indd Originator: Bryce



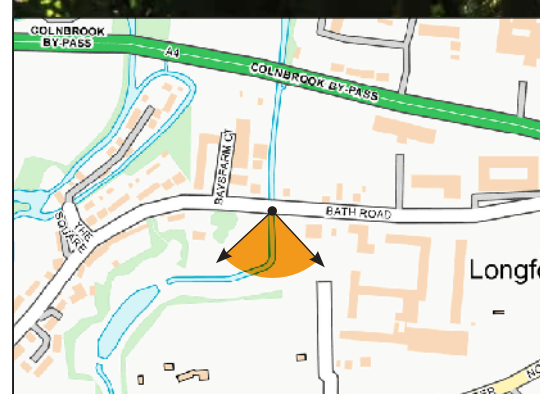
Baseline photograph

This image provides landscape and visual context only



Photomontage

View flat at a comfortable arm's length



OS reference:	E505 214, N176 936	Horizontal field of view:	90° (cylindrical projection)	Camera:	Canon EOS6D
Eye level:	25.5m AOD	Principal distance:	522mm	Lens:	50mm (Canon EF 50mm f/1.8)
Direction of view:	182°	Paper size:	841mm x 297mm (half A1)	Camera height:	1.5m AGL
Distance to barrier:	74m	Correct printed image size:	820 x 130mm	Date:	16/06/2023

Client
Heathrow

London Heathrow Airport
Proposed Noise Barrier

Figure 10.2b
Viewpoint 1: From the bridge over
the Duke of Northumberland's River
(Summer)

March 2024





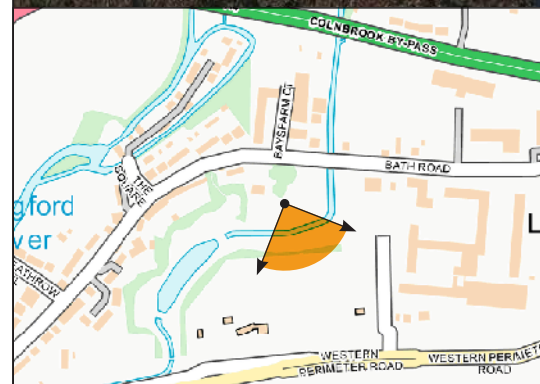
Baseline photograph

This image provides landscape and visual context only



Photomontage

View flat at a comfortable arm's length



OS reference:	E505 149, N176 881	Horizontal field of view:	90° (cylindrical projection)	Camera:	Canon EOS6D
Eye level:	24.5m AOD	Principal distance:	522mm	Lens:	50mm (Canon EF 50mm f/1.8)
Direction of view:	156°	Paper size:	841mm x 297mm (half A1)	Camera height:	1.5m AGL
Distance to barrier:	67m	Correct printed image size:	820 x 130mm	Date:	16/03/2023

Client
Heathrow

London Heathrow Airport
Proposed Noise Barrier

Figure 10.3a
Viewpoint 2: From the eastern section of Longford 'pocket park' (Winter)

March 2024



C:\Users\UKCL775\OneDrive - WSP\OneDrive - WSP\03651Temp\WindfarmLHR_BARRIERS\Design\viewpoint 2.indd Original: Bryce



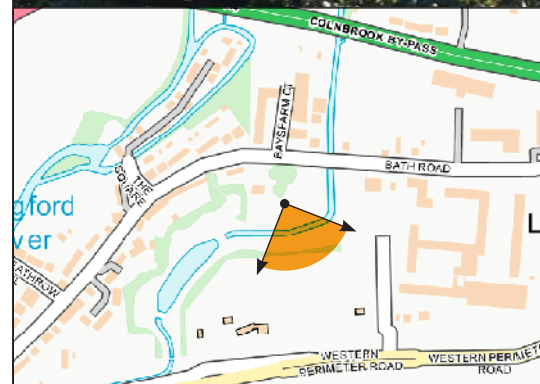
Baseline photograph

This image provides landscape and visual context only



Photomontage

View flat at a comfortable arm's length



OS reference:	E505 149, N176 881	Horizontal field of view:	90° (cylindrical projection)	Camera:	Canon EOS6D
Eye level:	24.5m AOD	Principal distance:	522mm	Lens:	50mm (Canon EF 50mm f/1.8)
Direction of view:	156°	Paper size:	841mm x 297mm (half A1)	Camera height:	1.5m AGL
Distance to barrier:	67m	Correct printed image size:	820 x 130mm	Date:	16/06/2023

Client
Heathrow

London Heathrow Airport
Proposed Noise Barrier

Figure 10.3b
Viewpoint 2: From the eastern section of Longford 'pocket park' (Summer)

March 2024



C:\Users\UKCL73\OneDrive - WSP\OneDrive - WSP\03651Temp\WindfarmLHR_BARRIER\Design\viewpoint 2.indd Original: Bryce



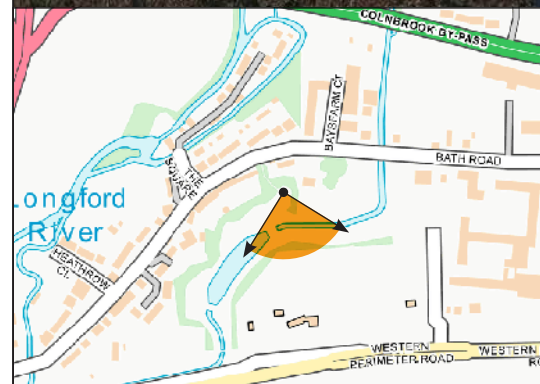
Baseline photograph

This image provides landscape and visual context only



Photomontage

View flat at a comfortable arm's length



OS reference:	E505 083, N176 886	Horizontal field of view:	90° (cylindrical projection)	Camera:	Canon EOS6D
Eye level:	24.5m AOD	Principal distance:	522mm	Lens:	50mm (Canon EF 50mm f/1.8)
Direction of view:	166°	Paper size:	841mm x 297mm (half A1)	Camera height:	1.5m AGL
Distance to barrier:	77m	Correct printed image size:	820 x 130mm	Date:	16/03/2023



Client
London Heathrow Airport
Proposed Noise Barrier

Figure 10.4a
Viewpoint 3: From the western section of Longford 'pocket park' (Winter)

C:\Users\UKCL775\OneDrive - WSP\OneDrive - WSP\03651Temp\Windfarm\LHR_BARRIER\Design\viewpoint3.indd Original: Bryce



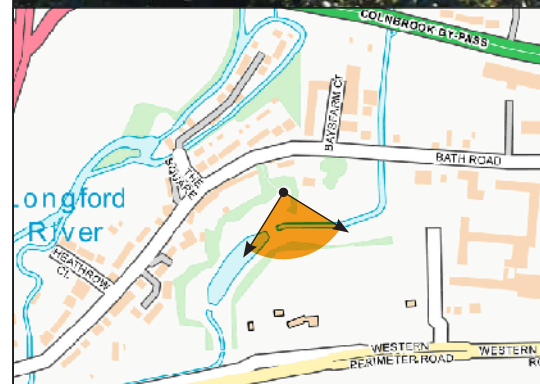
Baseline photograph

This image provides landscape and visual context only



Photomontage

View flat at a comfortable arm's length



OS reference:	E505 083, N176 886	Horizontal field of view:	90° (cylindrical projection)	Camera:	Canon EOS6D
Eye level:	24.5m AOD	Principal distance:	522mm	Lens:	50mm (Canon EF 50mm f/1.8)
Direction of view:	166°	Paper size:	841mm x 297mm (half A1)	Camera height:	1.5m AGL
Distance to barrier:	77m	Correct printed image size:	820 x 130mm	Date:	16/06/2023



Client
London Heathrow Airport
Proposed Noise Barrier

Figure 10.4b
Viewpoint 3: From the western section of Longford 'pocket park' (Summer)

C:\Users\UKCL773\OneDrive - WSP\03651Temp\WindfarmLHR_BARRIERS\Design\viewpoint 3.indd Original: Bryce